

INSTALLATION, OPERATION AND MAINTENANCE MANUAL

Models:

CP 2400

CP 2000

CP 1500

CP 1000

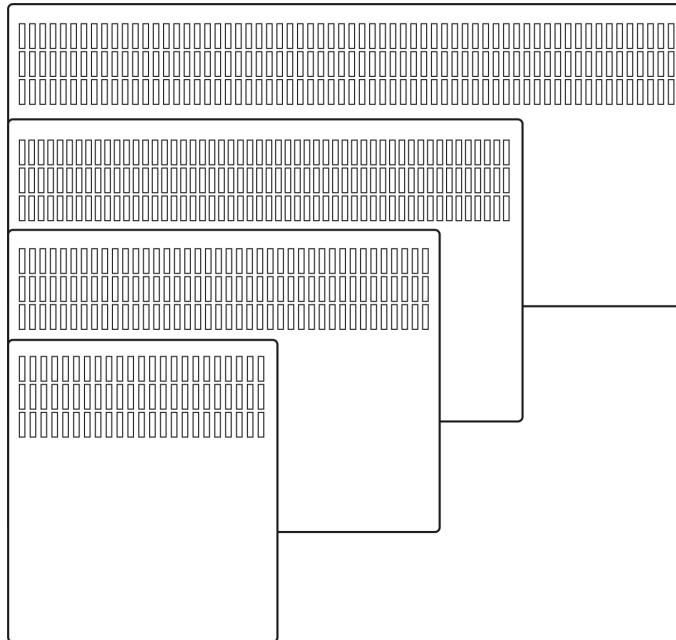


TABLE OF CONTENTS

- 1. Important Safety Instructions**
- 2. Specification Data**
- 3. Operating Instructions**
 - 3.1 Control Panel Guide**
 - 3.2 Switching on the Unit**
 - 3.3 Heating Function**
 - 3.3.1 Anti-Frost Function**
 - 3.4 Timer Function**
 - 3.4.1 Setting the Current Time**
 - 3.4.2 Programming the 24 Hour Timer**
 - 3.5 Safety Notes**
- 4. Installation Instructions**
 - 4.1 Installation Location**
 - 4.2 Wall Mounting Bracket**
 - 4.3 Castor Wheel Set**
 - 4.4 Electrical Connection**
 - 4.5 Safety Notes**
- 5. Maintenance**
- 6. Warranty**

I. Important Safety Instructions

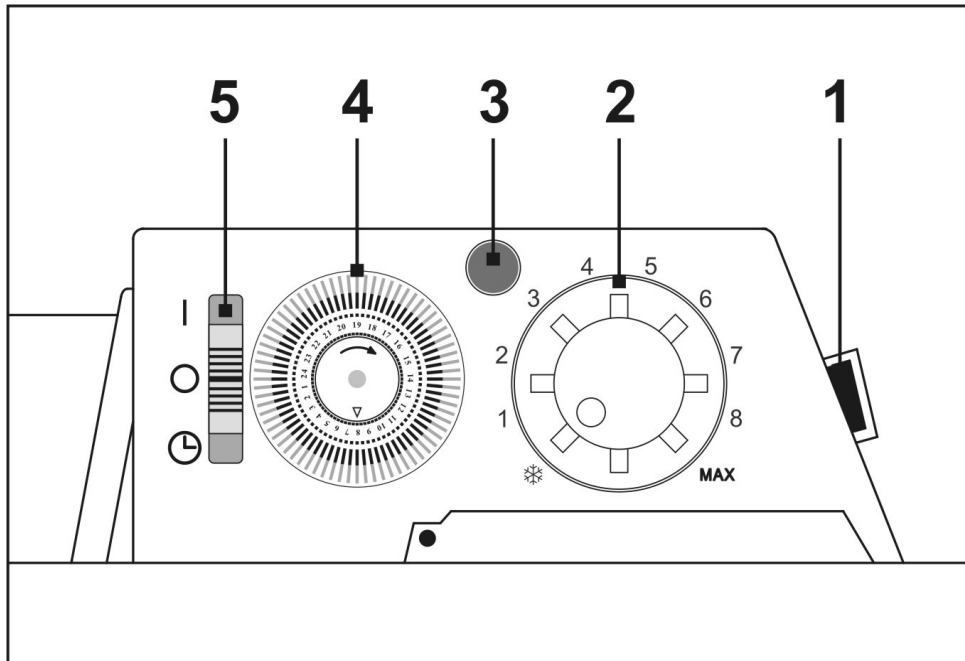
- **Prior to installing and operating the heater, read these instructions carefully and retain for future reference.**
- Indoor use only.
- Ensure the rated voltage is **230-240V**.
- Do not install the heater directly below a socket.
- Always operate heater in an upright position with the control panel at the top. If using castor wheel set, heater should be positioned on a flat horizontal surface.
- Arrange cord away from traffic areas so that it will not be tripped over.
- Do not place the cable under carpets /rugs.
- Do not remove plug from power socket by pulling the supply cord. Always grip plug.
- Do not operate this appliance if the cable or plug becomes damaged.
- In case of heater fault or damaged supply lead, the appliance should be returned to the distributor / manufacturer for repair.
- Ensure the appliance is switched OFF before connecting to the mains power supply.
- Do not cover or restrict airflow to the inlet or outlet grills in any manner, as the appliance may overheat and become a fire risk.
- Do not insert or allow foreign objects or metal utensils to enter any grill opening, as this may cause an electric shock or fire damage to the appliance.
- Do not operate in areas where gasoline, paint or other flammable liquids are used or stored.
- Switch off the power supply and unplug from the mains socket when not in use, before cleaning or changing accessories.
- To prevent overload and blown fuses, do not plug other appliance into same power outlet (receptacle).
- Do not immerse in liquid or allow liquid into the interior of the appliance, as this could create an electric shock hazard.
- Do not reach for an appliance that has fallen into water. Switch off at supply and unplug immediately.
- Do not operate appliance with wet hands. Always ensure that hands are dry before operating or adjusting any switch on the product or touching the plug and mains supply connections.
- Never leave the appliance unattended when connected to the mains power supply.
- Do not cover. NEVER use the heater to dry clothes or similar articles.
- Do not position the appliances close to curtains or other combustible materials. Keep combustible material such as furniture, cushions, bedding, paper, clothes, curtains etc. at least 1.0m away from the heater.
- The most common cause of overheating is deposits of dust or fluff in the appliance. Ensure these deposits are removed regularly by unplugging the appliance and vacuum cleaning air vents and grilles.
- This appliance heats up when in use. To avoid burns, do not let bare skin touch hot surface. Switch off and let cool down before moving. Store the heater in cool, dry location when not in use.
- Do not use this appliance with an external programmer, timer or any other device that switches the appliance on automatically. Use the controls supplied with this appliance.
- Do not use an extension cable with this appliance.
- Do not use the appliance in rooms less than 4m² area.
- This appliance is not intended for use by persons (including children) with reduced physical, sensory or mental capabilities, or lack of experience and knowledge, unless they have been given supervision or instruction concerning use of the appliance by a person responsible for their safety.

2. Specification Data

Model	CP 1000	CP 1500	CP 2000	CP 2400
Power (W)	1000W	1500W	2000W	2400W
Voltage (V)	240V~50Hz	240V~50Hz	240V~50Hz	240V~50Hz
Dimension (mm)	420 x 440 x 105	580 x 440 x 105	740 x 440 x 105	1000 x 440 x 105
Approximate Heating Area	11sqm-14sqm	15sqm-20sqm	20sqm-25sqm	25sqm-30sqm

3. Operating Instructions

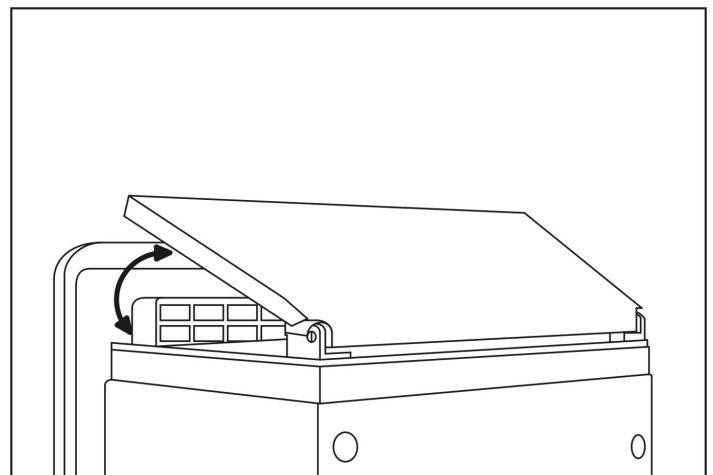
The control panel features an electronic thermostat and 24 hour manually set timer.



3.1 Control Panel Guide

- 1 - Main Power Switch (I/ O – ON / OFF)
- 2 - Thermostat Control Knob
- 3 - Heating Function Light
- 4 - 24 Hour Manually Set Timer
- 5 - Control Slide Switch

Note: A clear plastic cover fits over the control panel. This may be opened and closed by hand.

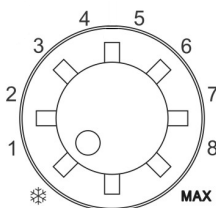


3.2 Switching on the Unit



Press the main power switch (1) on the right hand side of panel. Setting “I” is POWER ON. Setting “O” is POWER OFF.

3.3 Heating Function



Move the control slide switch (5) from “O” (POWER OFF) to “I” (HEATING ON).

Upon first use, the heater may give off some fumes (this is normal).

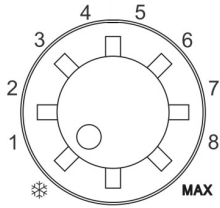
Ensure that the room is ventilated (for example, open a window).

Turn the thermostat control knob (2) to the desired temperature setting.
 “❄️” is 5°C and “MAX” is 30°C.

The heater will produce heat and the heating function light (3) will come on, indicating that the heater is working towards the desired temperature setting.

Once the desired temperature setting has been reached, the heater and the heating function light will switch off. The heater and heating function light will switch on and off intermittently to maintain the desired set temperature.

3.3.1 Anti-Frost Function



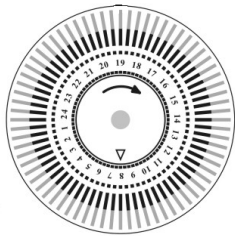
Turn the thermostat control knob (2) to “❄️”. The heater will automatically switch on should the room temperature drop below 5°C, when heater in “1” power on setting.

Note: Ensure the heater most appropriate to the room size is fitted. Refer to Specification Data for approx heating area per model.

3.4 Timer Function

Move the control slide switch (5) from “O” (POWER OFF) to “⌚” (TIMER ON).

3.4.1 Setting the Current Time



Turn the 24 hour manually set timer (4) clockwise until the “▽” indicates the current time. Note: this is a 24 hour time device.

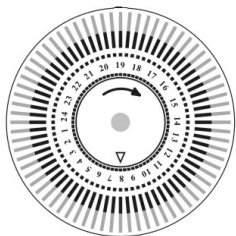


For example, the “▽” pointing to 8 indicates the current time is 8AM.

For example, the “▽” pointing to 19 indicates the current time is 7PM.



3.4.2 Programming the 24 Hour Timer

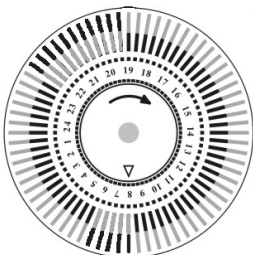


There are a total of 72 keys on the 24 hour manually set timer. Each key represents 20 minutes.

Note: On the left diagram, the gears are illustrated as thick black lines.

If the key is set inwards (towards the centre), the heater will be set to OFF during that period. If the key is set outwards (away from the centre), the

heater will be set to ON during that period.



Note: On the diagram above, the keys are set towards the centre, indicating that the heater will be OFF for the full 24 hour period.

Example: The left diagram illustrates the 24 hour manual set timer is programmed to heat from 6.00AM to 7.40AM, and 7.00PM to 10.20PM.

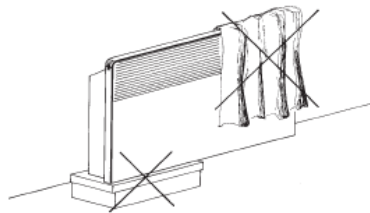
The heater ON times shows the keys are set outwards (away from the centre). The heater OFF times shows the keys are set inwards (towards the centre).

Notes:

- If the power is switched OFF, or in the event of a power failure, the 24 hour manually set timer function will stop functioning. The correct time must be reset when the power is restored.
- The clock face turns **CLOCKWISE ONLY**. Forcing the clock face in an anti clockwise direction will destroy the timing keys and void the product warranty.

3.5 Safety Notes

The air outlet must not be obstructed. For safety reasons the upper and lower air grilles must never be covered with items such as washing nor obstructed by items in close proximity (see figure to right). Objects should not be leant against the unit nor placed between the unit and the wall.



Never leave combustible materials, such as wood, paper, textiles or flammable items such as wax, petrol, aerosol cans etc. in the vicinity of the warm air outlet. As with all similar heaters, the flow of rising air may cause discoloration of the wall.

The appliance must not be operated:

- In areas which are subject to the risk of fire or explosion due to chemicals, dust, gases or vapors;
- In the immediate vicinity of pipes or containers which carry or contain combustible or potentially explosive substances.

For this reason, the minimum clearance intervals must not be undercut.

In workshops or other areas in which the odor of waste gases, oil, petrol, etc. might occur, or in which work is carried out involving solvents and chemicals, there is a risk of sustained odor burdens being engendered, and possibly of dirt contamination occurring.

Before using any materials which produce flammable gases or vapors, e. g. laying or sealing parquet or PVC flooring, or when using spray polishes, spirits and similar materials, ensure the heater is switched off.

4. Installation instructions

The Thermofilm convective panel heaters are electric heaters designed to be mounted on the wall or freestanding using the supplied castor wheel set. These units are suitable for heating enclosed indoor rooms such as bedrooms, studies, offices, living areas and bathrooms.

ATTENTION!

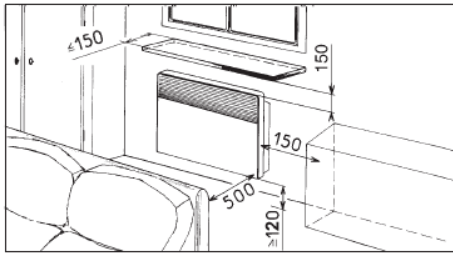
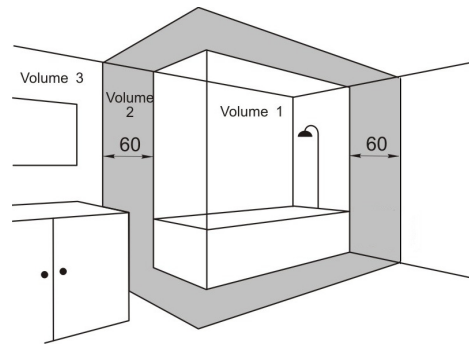
For hard wired installations, electrical connection and first operation of this appliance should be carried out by a qualified installer. The company does not accept liability for failure of any goods supplied which have not been installed and operated in accordance with the manufacturer's instructions.

These installation instructions belong with the heater and must be handed on to the purchaser if the heater is sold.

4.1 Installation Location

The Thermofilm convective panel heater should be installed according to normal trade practice and in compliance with legislation in relevant country.

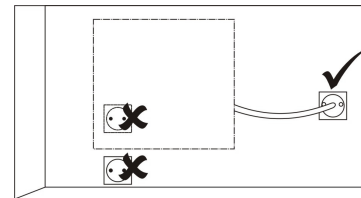
The panel convector is **CLASS I** and is protected against splashed water (IP24). Therefore it can be installed outside the shaded area shown in the bathroom area. (See right hand side diagram)



Ensure the safety zones (mm) in diagram (left hand side) are kept free.

If the wall covering is laid on foam, a spacer the same thickness as the foam must be placed under the panel heater's support. This ensures there is free space behind the panel heater to make sure its control settings are not adversely affected.

The Thermofilm convective panel heater must not be installed immediately below a wall socket. The heater must be connected to a socket outlet or permanent terminal box at least 10cm to one side of the heater. If the heater is installed in the Bathroom or in humid area, the socket outlet or permanent terminal box must conform to the IP24 requirement.



The Thermofilm convective panel heater must not be installed in a draught likely to affect the control settings (under a ventilating fan, etc.)

4.2 Wall Mounting Bracket

The wall mounting bracket is oriented centrally (See RHS diagram).

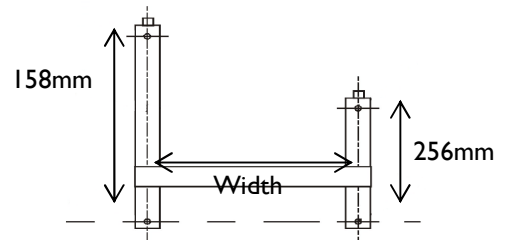
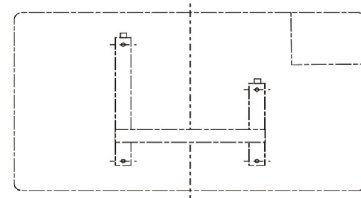
Step 1: Loosen the locking plate screw and rotate the locking plate out of the fixing slot (See RHS images).

Then remove the mounting bracket from the heater.

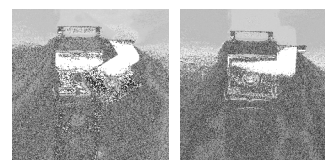
Step 2: Use the wall-mounting bracket as a template for marking the fixing holes. Position the mounting bracket in the correct position on the wall and mark the screw-holes through the 4 mounting holes (See RHS diagram).

Step 3: Install the 4 fixing devices in the wall, ensuring they are more than adequate to safely fix the heater to the wall. (ST4 expansion screws are suggested).

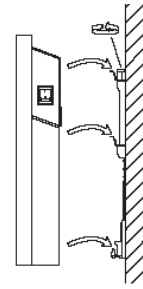
Step 4: Fix the bracket firmly to the wall using all 4 mounting locations.



Model	Width
CP 1000	214mm
CP 1500	347mm
CP 2000	347mm
CP 2400	606mm



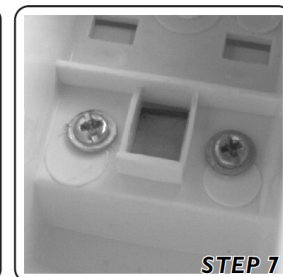
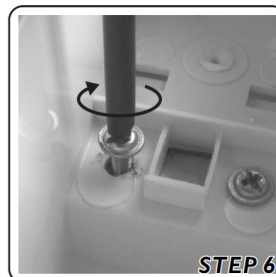
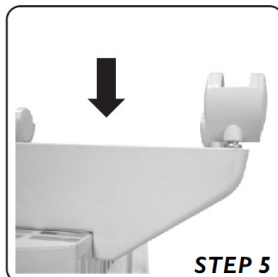
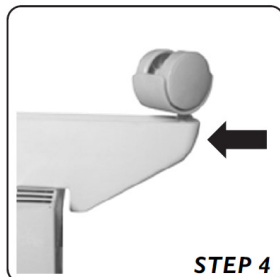
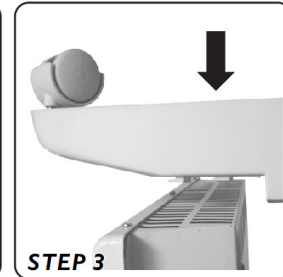
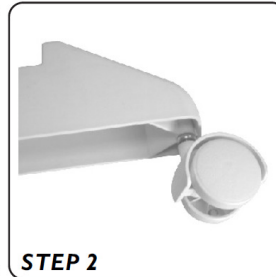
Step 5: Mount the heater on the bracket so the bracket protrusions fix into the 4 slots on the back of the heater. (See RHS diagram). Rotate the locking plate into the fixing slot and tighten the screw



To remove the heater, reverse the above operation.

4.3 Castor Wheel Set

Part list



4.4 Electrical connection

This heater is suitable for 230-240V.

Please observe national standards, the regulations of your local electricity supply company as well as data on the rating label.

Electrical safety!

The Thermofilm convective panel heaters are IP24 protected against splashing water. In humid areas such as bathrooms, the power socket must be installed at least 25cm above floor level.

Note the details on the rating plate!

The voltage supply must match the requirements on the rating plate. The supply cable must be correctly sized. The heater must be connected to a socket outlet or permanent terminal box at least 10 cm to one side of the heater.

Please note in general:

Where the Thermofilm convective panel heater is fitted in a room with a bath or shower, ensure the safety zone defined in IEE Regulations is applied in accordance with the details on the rating plate.

To avoid hazards, if the power cord of the appliance exhibits visible damage it must be replaced by the manufacturer or his service agent or a qualified electrician.

4.5 Safety Notes

The Thermofilm convective panel heater is equipped with a safety cut-out that switches the heater off if it overheats.

Once the heater has switched off due to overheating, remove the cause of the fault, e. g. blocked air grids. When the heater has cooled down for several minutes it will restart automatically. If the heater then cuts off again, switch off the heater and call an authorized service person.

5. Maintenance

Do not use abrasive or aggressive cleansers to clean the heater. Use a vacuum cleaner regularly to clean the upper and lower air grids.

6. Warranty

The below Warranty Terms and Conditions apply for **New Zealand and Australia only**. For international warranty please refer to international warranty terms and conditions.

Thermofilm warrants to the original owner that CP Heater products will be free from defects in materials and workmanship for a period of 24 months from the date of purchase in accordance with the following warranty terms and conditions.

Provision of this warranty is subject to:

- The CP Heater product must be installed in accordance with the Installation Instructions and relevant electrical standards and codes.
- The CP Heater product must be maintained and cleaned according to instructions detailed in the Installation Manual.
- There is no warranty expressed or implied with regard to capacity requirements. The selection of the unit or units depends entirely upon the system design and capacities as determined by the purchaser.
- The customer has not repaired, opened or altered the product in any unauthorised manner.
- This warranty excludes damage to the product or components arising from circumstances outside the control of Thermofilm, including, but not limited to, where the product is not used for intended purpose; where the product has been rectified in any way; incorrect installation; incorrect power supply; damaged caused during delivery; misapplication, misuse, abuse, vandalism, lack of maintenance or accident.
- Thermofilm's obligations under this warranty are limited to repair or replacement at Thermofilm's factory of any components of the product which Thermofilm identifies to its satisfaction to be defective.
- Transportation charges involved in return of the product to the Thermofilm factory (or any other location authorised in writing by Thermofilm) is the sole responsibility of the customer.
- All products are inspected and tested before despatch and are at the risk of the purchaser after the shipment from the Thermofilm factory, if not delivered by Thermofilm to destination.
- No products or components will be supplied in advance of an examination of the faulty product or components by Thermofilm or an authorized representative of Thermofilm.
- Thermofilm does not participate in any site related costs or labour expenses incidental to replacement of parts, repairing, removing, installing, servicing, transportation or handling of parts to complete products, and assumes no liability on parts repaired or replaced without written authorisation. Thermofilm shall not be liable for any default or delay in performance of its warranty obligations caused by any circumstances beyond its control, including, but not limited to, judicial or government restrictions, strikes, fires, floods, abnormal weather conditions, delayed supply of components.

Should products be determined as damaged on arrival, immediately notify the transport company of the condition and have them noted on the freight documents. If damage is discovered after unpacking, demand immediate inspection by the transportation company and insist that a record of the damage is made on the freight documentation.

The customer warrants using the product in accordance with:

- Any instructions provided to it by Thermofilm from time to time.
- All government and local regulations, including but not limited to all relevant electrical, environmental laws and regulations governing the installation, storage, use, handling and maintenance of the goods.
- All necessary and appropriate precautions and safety measures relating to the installation, storage, use, handling and maintenance of goods.

Our goods come with guarantees that cannot be excluded under the Australian Consumer Law. You are entitled to a replacement or refund for a major failure and for compensation for any other reasonably foreseeable loss or damage. You are also entitled to have the goods repaired or replaced if the goods fail to be of acceptable quality and the failure does not amount to a major failure.

All warranty requests for repairs or replacements must be accompanied by a complete "Warranty Claim Form" available from Thermofilm, together with proof of purchase (and where possible, photos of the installation) and the heater returned to the place of purchase.

In the event of a warranty claim, the goods need to be returned to the distributor/retailer for repair/replacement. Contact:

Thermofilm Australia Pty Ltd
27 Rosalie Street, Springvale, Victoria 3171, Australia
Telephone: (03) 9562 3455, Email: info@thermofilm.com.au



27 Rosalie Street, Springvale VIC 3171
P: +61 3 9562 3455 F: +61 3 9548 3979
sales@thermofilm.com.au
www.thermofilm.com.au
Rev B JAN12