



Arch.: Delugan Meissl, Vienna

 **EQUITONE**
Fibre cement facade materials

www.equitone.com



Fibre cement

Fibre cement is a mineral composite material with outstanding aesthetic and physical properties..

Our company has led development and innovation of this architectural material for over a century under different brand names such as "Eternit".

Today, EQUITONE facade materials are manufactured in state-of-the art facilities in Germany and Belgium.

Authenticity

Cement, cellulose and mineral materials, reinforced by a visible matrix. Nothing else. EQUITONE is a natural composite material that proudly shows its authentic personality.

Performance

EQUITONE can be produced in very large sheets (up to 3m x 1.25m) that are very thin, yet have outstanding physical properties. EQUITONE is non-combustible (A2 EUROclass). EQUITONE has a life expectancy exceeding 50 years in the most demanding exterior applications.

Sustainability

Facades constructed with EQUITONE are thin and lightweight, resulting in minimum depletion of raw materials.

The environmental footprint of EQUITONE is fully detailed in the environmental product declarations (EPDs), published on [EQUITONE.com](https://www.equitone.com).



Natural mineral



Thin





Ventilated facade

Originated in Scandinavia centuries ago, the ventilated facade (rainscreen) technique is now very prominent in areas with demanding climatic conditions.

In the rainscreen system, the outer panel deflects rain and sun heat away from the building. The ventilation space allows air to freely circulate behind the panel, creating a well ventilated and comfortable inner building.

Versatility

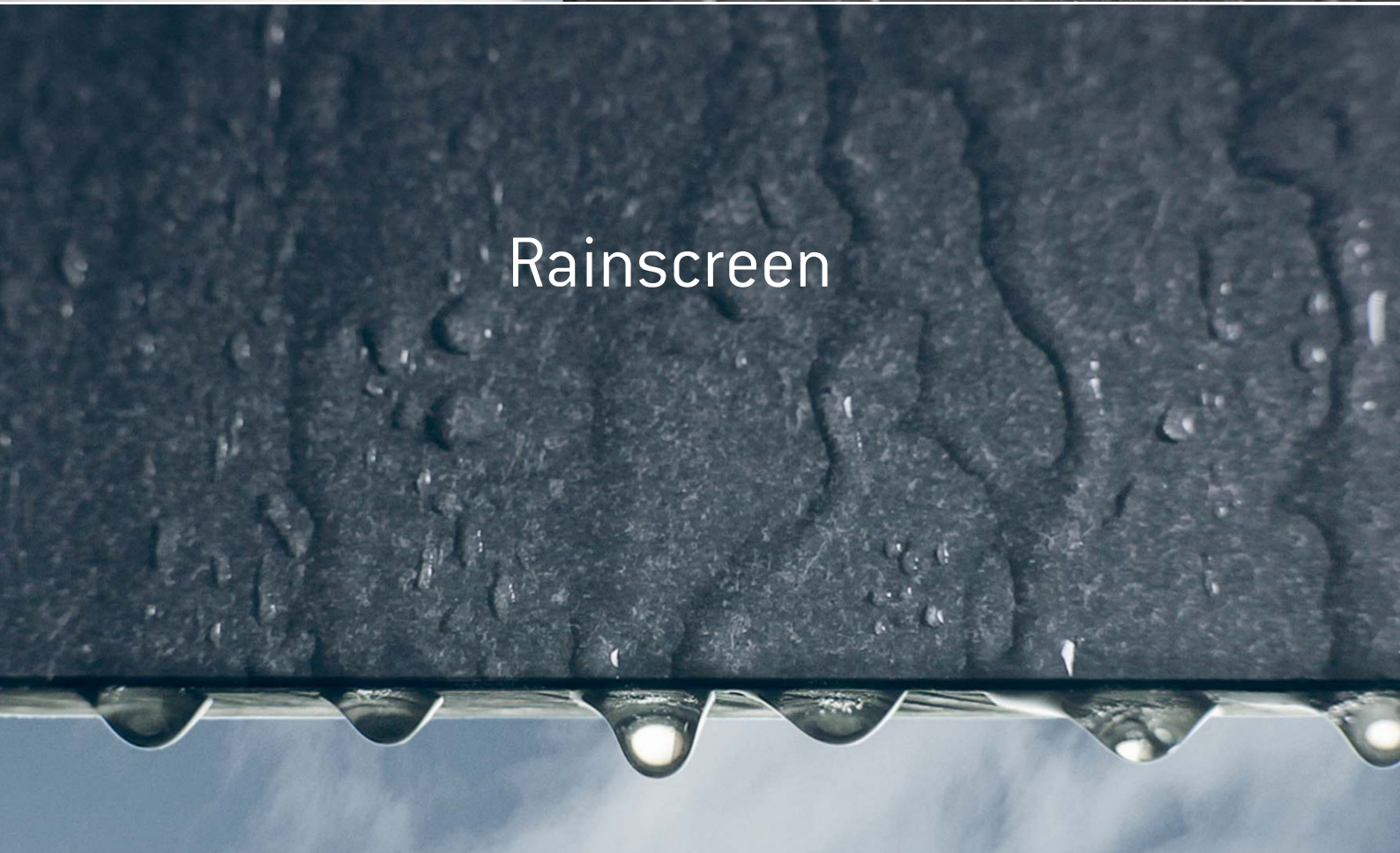
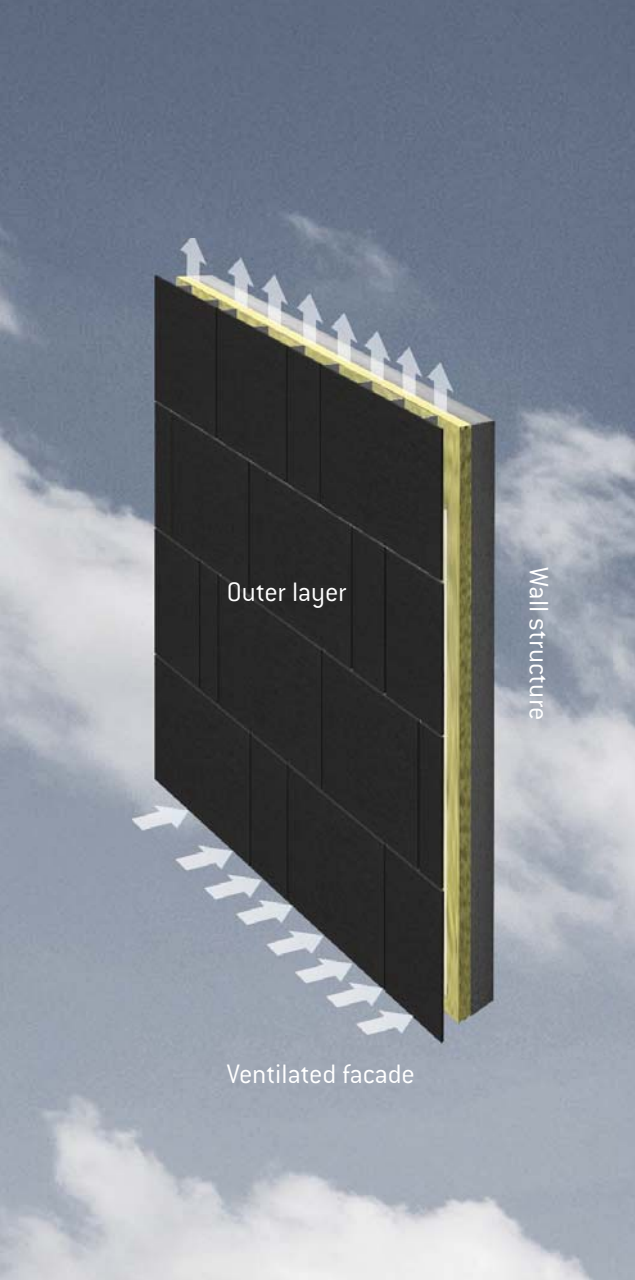
The ventilated facade construction principle combines the scalability of curtain wall construction with the creative versatility and adaptability offered by traditional building techniques.

Less is more

A ventilated facade system has minimal thickness and weight, yet it offers maximum performance.

Healthy

The ventilated facade construction principle avoids cold bridges, eliminating condensation and mould growth.





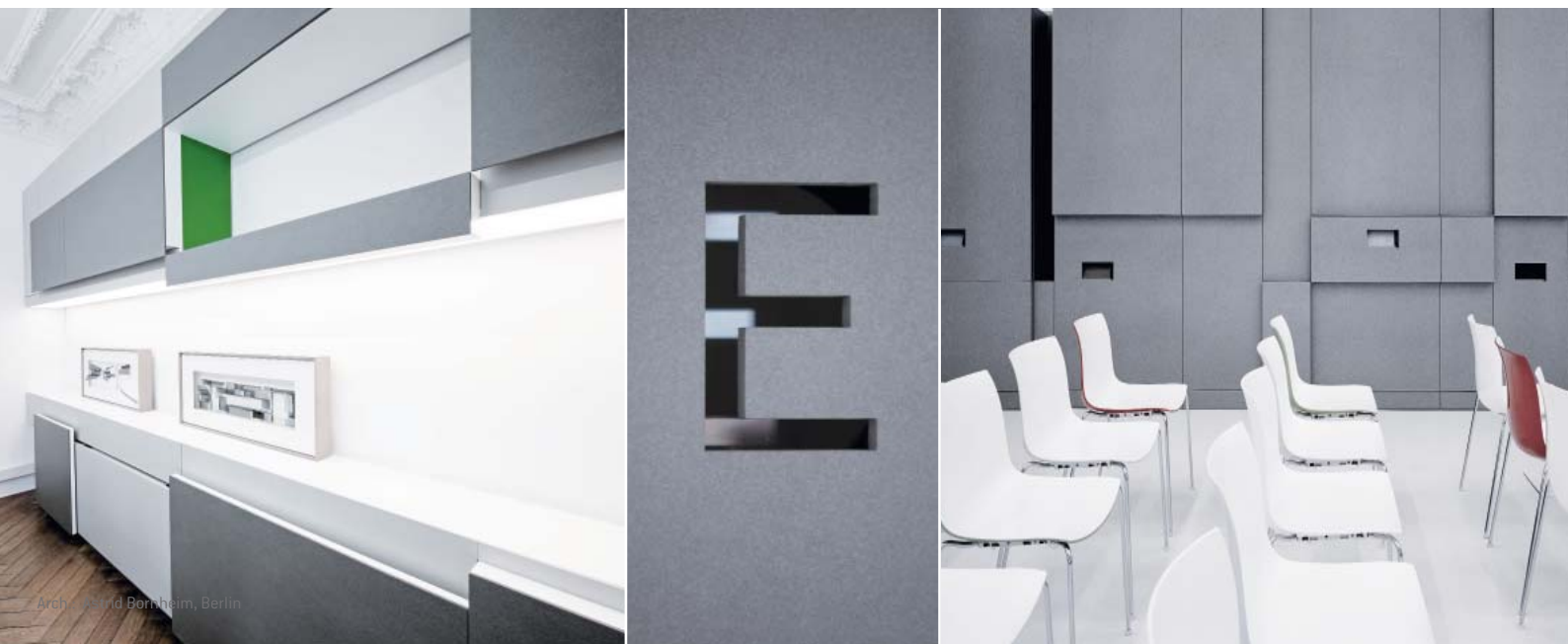
Design freedom

Shapes

EQUITONE facade materials can easily be transformed to many shapes and sizes.

Design material

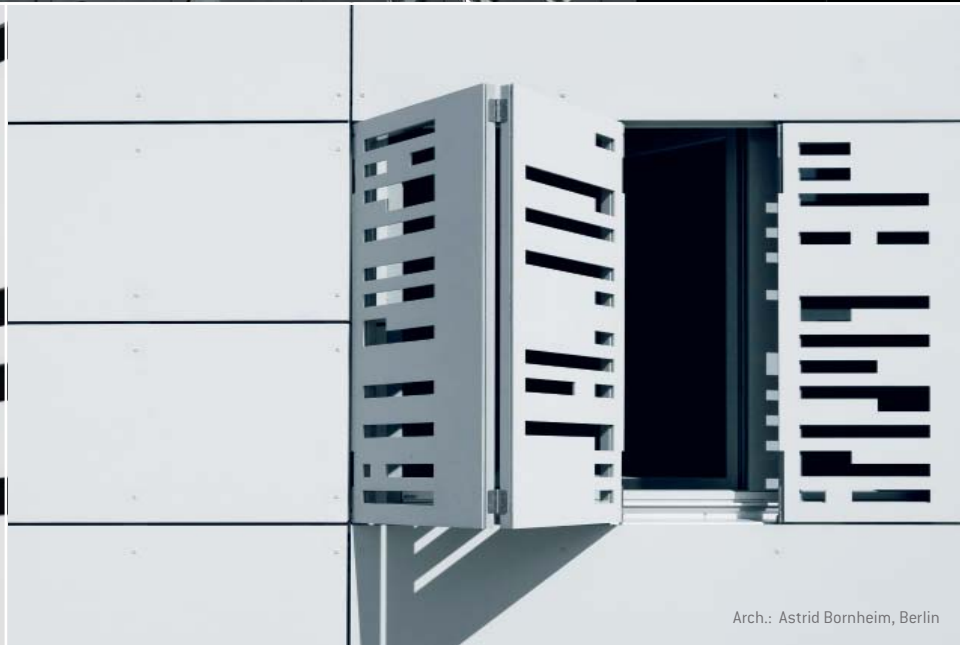
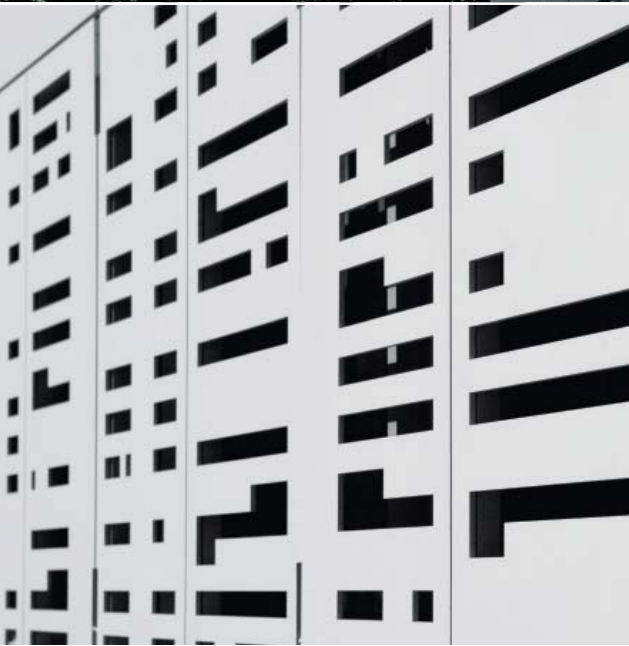
Many architects and designers have also applied EQUITONE materials to interiors and design.



Shapes & shades



Arch.: Boguslaw Wowrzeczka, Wrocław, Poland



Arch.: Astrid Bornheim, Berlin



Arch.: Busmann + Haberer, Berlin



Arch.: Regina Schineis, Augsburg, Germany



A modern building facade featuring dark grey, rectangular panels. The facade is punctuated by several windows of varying sizes. A large window in the center shows a view of a cloudy sky. To the left, a balcony with a glass railing is visible, and another window shows a blue patterned object. The sky above is blue with light clouds. The overall aesthetic is clean and minimalist.

EQUITONE [natura]

EQUITONE [natura]

Sophistication

Natural through-coloured material
with clearly visible yet subtle
fibre cement matrix.

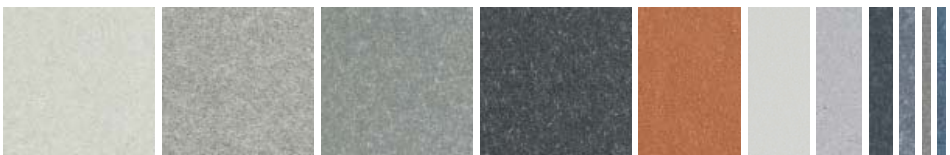
Soft touch

Matt, silk smooth surface finish.

Protection

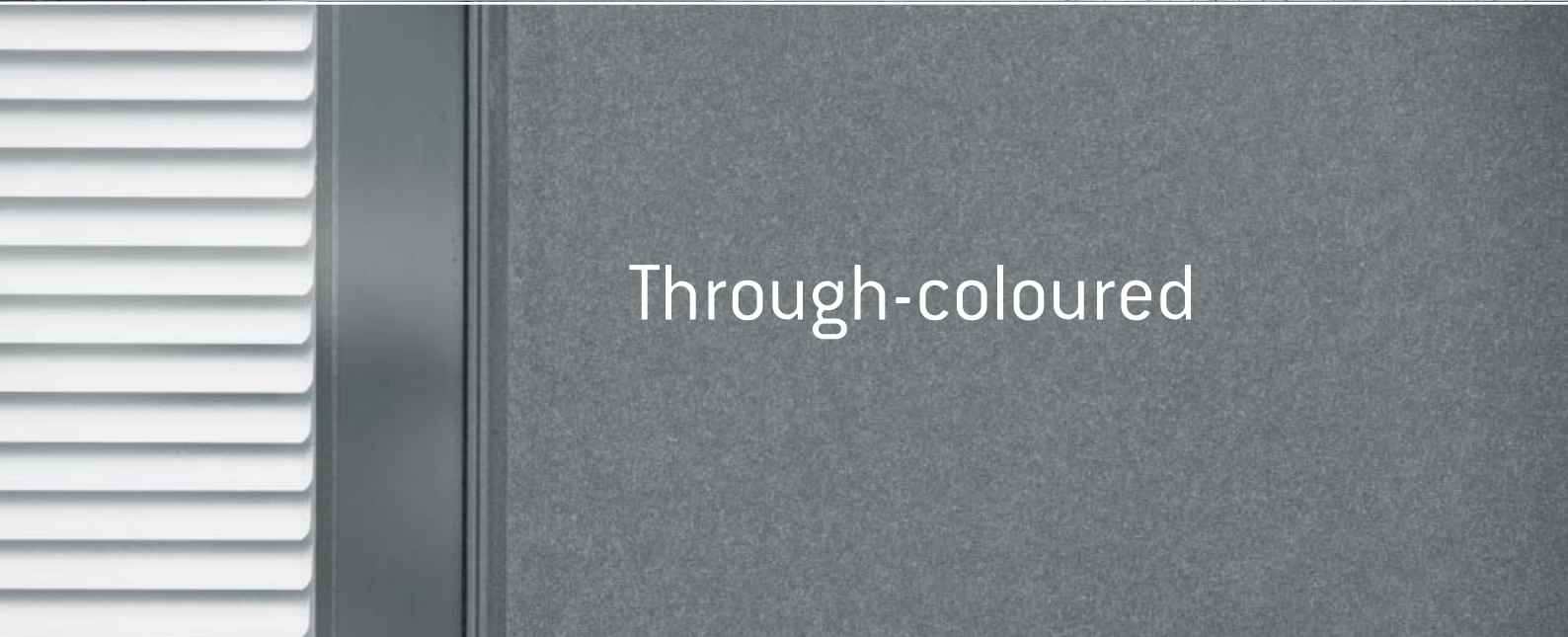
Transparent protection layer,
optional EQUITONE "PRO"
anti-graffiti protection.

Available in 12 colours:





Arch.: DRP Baukunst, Dortmund, Germany



Through-coloured



A photograph of a modern building facade. The building features a grid of light grey, rectangular panels. A large window on the left side is partially covered by dark, textured roller blinds. The sky is blue with scattered white clouds. The text 'EQUITONE [tectiva]' is overlaid in white on the building's facade.

EQUITONE [tectiva]

EQUITONE [tectiva]

Authenticity

Original through-coloured material with highly expressive fibre cement structure.

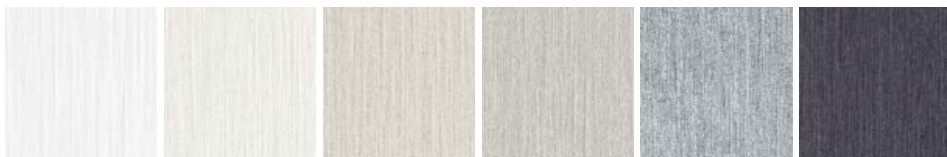
Individuality

The production process makes each panel unique in colour, texture and surface.

Tactility

Rough, unpolished fibre cement surface with delicate linen feel.

Available colours:





Authentic expression





EQUITONE [pictura]

EQUITONE [pictura]

Colour

EQUITONE [pictura] offers a selection of contemporary colour coatings.

Matt surface

Smooth and ultra-matt finish for that high class architectural look.

Anti-graffiti

EQUITONE [pictura] is treated with the EQUITONE "PRO" UV coating for everlasting anti-graffiti protection.

Available in 10 standard and many project colour finishes:



Matt surface colours



Arch.: KLE Freie, Kirchheim unter Teck, Germany



Arch.: Atelier d' Architecture Sylviane Mousny, Conneux, Belgium



Technical data

EQUITONE is committed to the sustainable manufacture of high performance facade solutions. Our range of products are manufactured under quality management systems (ISO 9001) and environmental systems (ISO 14001).

Characteristics

- Can achieve an A+ rating as defined in the BRE Green Guide
- Fire safe (non combustible and no spread of flame)
- Installed life expectancy of at least 50 years
- Resistant to extreme weather conditions and temperatures
- Resistant to vermin, insects, mould growth, fungi etc.
- No maintenance required

Test results

The performance of all EQUITONE materials is tested and proven.

Materials	EQUITONE [tectiva]	EQUITONE [natura] and EQUITONE [pictura]
Tested according to ISO quality management system of EN 12467		
Density	1580 kg/m ³	1650 kg/m ³
Bending strength	Transversal 32 N/mm ² Longitudinal 22 N/mm ²	Transversal 24 N/mm ² Longitudinal 17 N/mm ²
Modulus of elasticity	Transversal 14,000 N/mm ² Longitudinal 12,000 N/mm ²	Transversal 17,000 N/mm ² Longitudinal 15,000 N/mm ²
Classification/Test to EN 12467		
Durability classification	Category A	Category A
Strength classification	Class 4	Class 4
Impermeability test	OK	OK
Warm water test	OK	OK
Soak dry test	OK	OK
Freeze thaw test	OK	OK
Classification to EN 13501-1		
Reaction to fire	Class A2-s1-d0	Class A2-s1-d0
Others		
Hygic movement	1.6 mm/m	1.0 mm/m
Porosity	< 25 %	< 18 %
Thermal expansion coefficient, α	< 0,01 mm/mK	< 0,01 mm/mK
Thermal conductivity, λ	0.390 W/mK	0.407 W/mK





Installation

Framework

A lightweight aluminium or galvanized steel framework is fixed to the load bearing structure. This system is simple to install, robust and can be easily adjusted.

Fixing

The EQUITONE facade materials can be fixed to the framework with rivets or screws. Solutions with invisible fixing are available.

Accessories

EQUITONE offers a full range of accessories that complement the facade system.

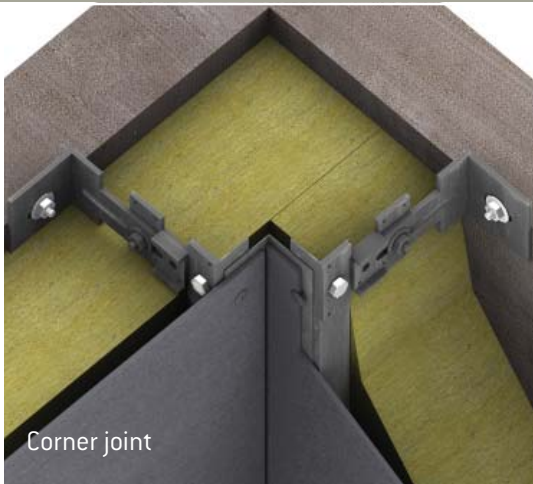
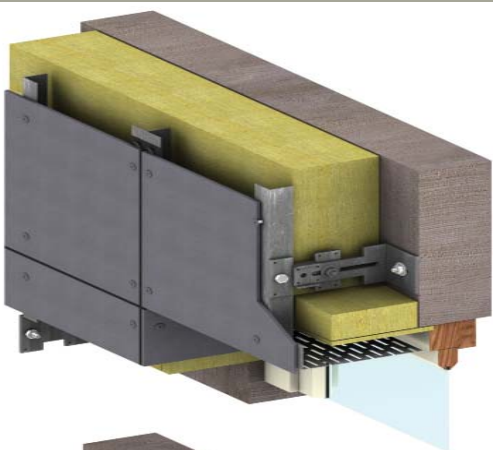
Technical support

Our dedicated technical department is at your service. You can count on their support for your projects, from conception to technical realisation.



Overview of installation

Finish of wall top



Corner joint

Wall base fixing



Construction of window



Jointing of wall end



EQUITONE
Fibre cement facade materials



www.equitone.com

EQUITONE Asia Pacific
info.asia@equitone.com
info.australia@equitone.com