



COMMERCIAL

EXTERNAL APPLICATIONS

The CSR logo, consisting of the letters "CSR" in a white, bold, sans-serif font, centered within a red square with a white border.



The CSR Cemintel™ range of systems for commercial applications encourages design diversity, ease of installation and being manufactured from fibre cement, lightweight & low maintenance solutions. With a choice of pre-primed or a range of colour-through express-joint facades, and the unique SoffitLine flush jointed ceiling system, Cemintel provides endless design opportunities.

Cemintel's commercial systems have been developed to be simple, flexible and durable making them an easy to install, long lasting solution for buildings that require a non-combustible facade material.

Be inspired by the design opportunities with Cemintel.

CEMINTEL™ CREATIVE FACADE

PAGE 4

CEMINTEL BARESTONE™

PAGE 8

CEMINTEL EXPRESSWALL™

PAGE 12

CEMINTEL SOFFITLINE™

PAGE 16



CEMINTEL™ CREATIVE FACADE

Cemintel™ Creative Facade provides a highly versatile and durable façade which is suitable for an extensive range of commercial and industrial buildings types. Cemintel Creative Façade offers 8mm 'colour through' panels in a wide-range of colours and textures. Cemintel™ Creative Facade combines 'colour through' technology allowing the panel to be a consistent colour right through the material with a premium protective coating eliminating the requirement for painting or finishing on site.

Cemintel™ Creative Facade utilises the proven Cemintel Expresswall™ framing system as the support structure. The panels are fixed to the vertical top hat framing using a unique stainless steel pop rivet with colour matched head and closed cell foam seal. The panels may be arranged in a variety of patterns, and surface relief is produced by the square edged panels with expressed joints.

CREATIVE FACADE PANELS ARE MANUFACTURED FROM 8MM COMPRESSED AIR CURED FIBRE CEMENT, PROVIDING A LONG LASTING SOLUTION.



ADVANTAGES:

- Premium quality 'colour through' technology delivers exceptional visual results
- An extensive range of contemporary colours and textures to match architectural inspiration
- Premium pre-finished face delivers exceptional durability and minimal maintenance
- Expressed joint appearance
- Colour matched rivet heads for better surface appearance
- Rivets act as fixing and gliding points for a simple layout
- Designed for a wide range of wind pressures
- Lightweight panels reduce structural costs

APPLICATIONS:

- Supermarkets and Shopping Centres
- Office Buildings
- Most Commercial Buildings
- Apartment Buildings

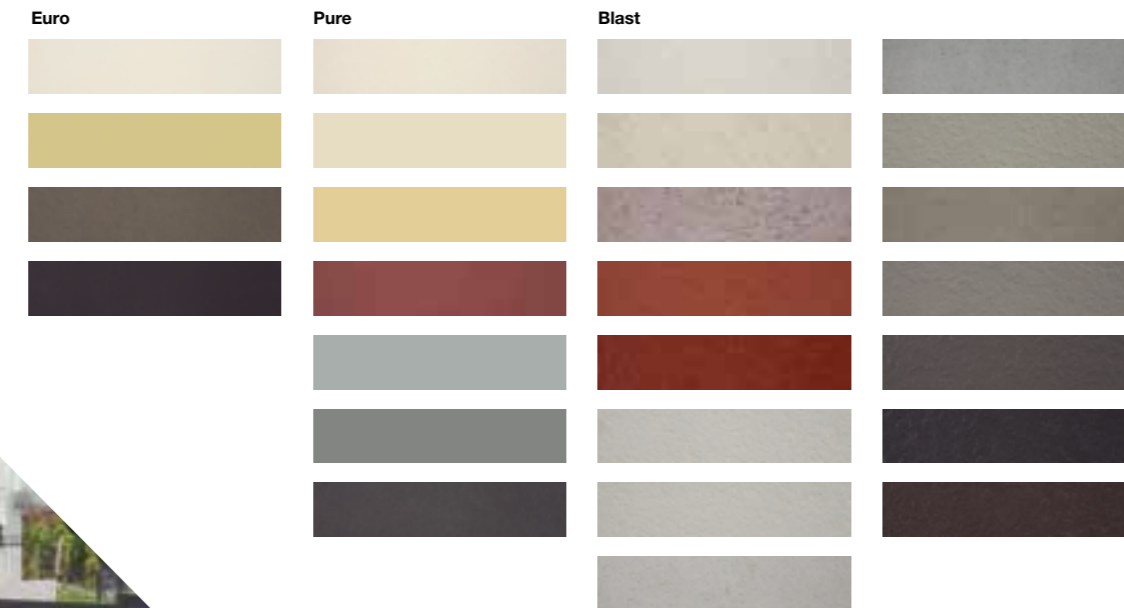
Or any other application not excluded by the design considerations section of this brochure.

ACCESSORIES:

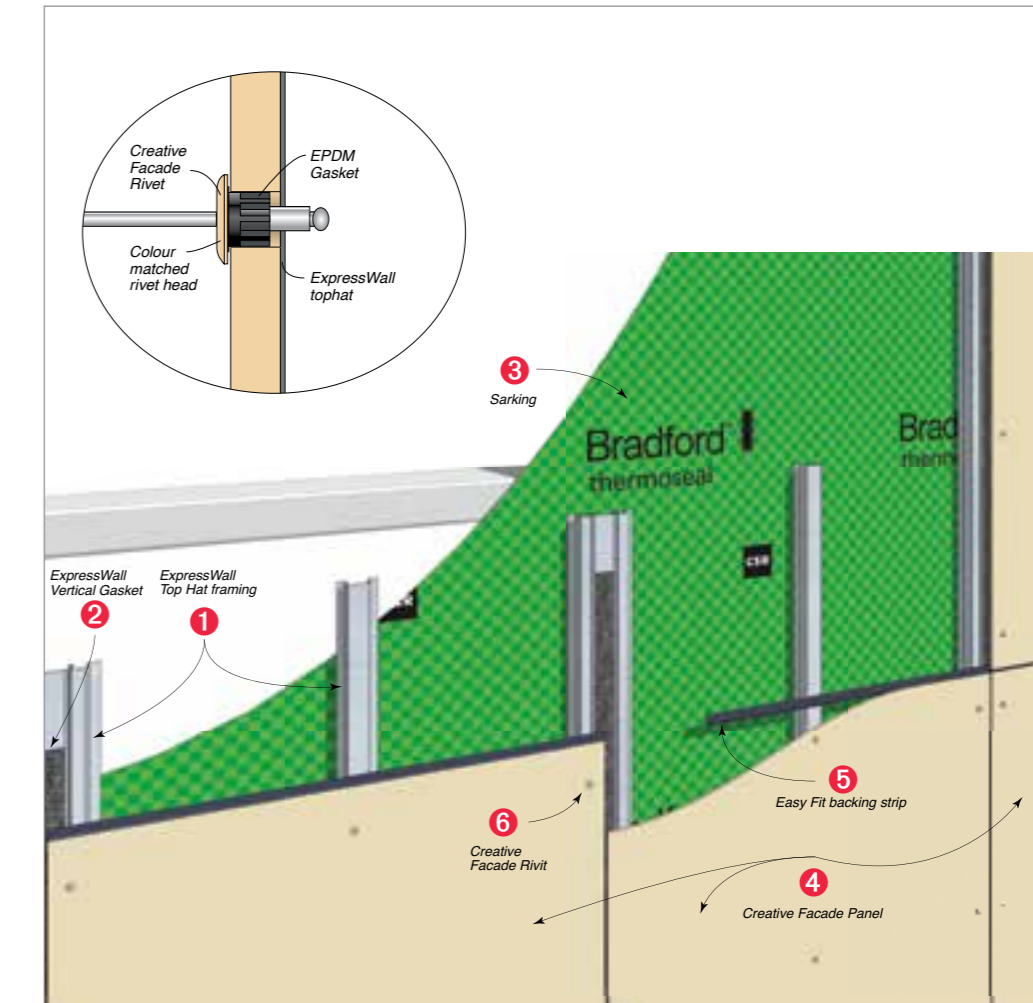
A full range of Cemintel™ Creative Facade accessories, including top hats, backing strips and gaskets are detailed in the technical manual.

	Thickness (mm)	Width (mm)	Length (mm)
Euro/Pure	8	1200	2400
Blast	8	1100	2400

COLOUR SELECTIONS:



SYSTEM OVERVIEW



CEMINTEL BARESTONE™

CSR Cemintel BareStone™ is a pre-finished, authentic, and contemporary exterior facade perfect for commercial applications. BareStone combines the look of raw cement with the performance and easy installation of Cemintel ExpressWall™. The external cladding system consists of 9mm compressed panels that are coated in Cemintel's unique CeminSeal™ technology, preventing water from penetrating into the sheet.

Not only does this create a great looking, modern finish, CeminSeal also eliminates the requirement to paint on site, reducing installation time.

Barestone utilises Cemintel's ExpressWall fixing system, ensuring it is both an easy to install and a highly durable facade solution. Vertical top hats have two fixing points for stability and create a structurally sound facade that has been designed and tested to be resistant to wind pressure in cyclonic regions. High performance, self-adhesive gaskets are easily attached to the top hat prior to installation, reducing installation time. The gasket seals vertical and horizontal joints, reducing the requirement for sealant and accommodating building.

BARESTONE™ ARE MANUFACTURED FROM 9MM COMPRESSED FIBRE CEMENT, PROVIDING A LONG LASTING SOLUTION.



ADVANTAGES:

- Pre-finished external wall panel
- Raw cement appearance
- CeminSeal waterblock technology
- Complete engineered system from the one supplier
- Lightweight, low maintenance external cladding material
- Exposed joint appearance
- Designed to withstand extreme wind pressures

APPLICATIONS:

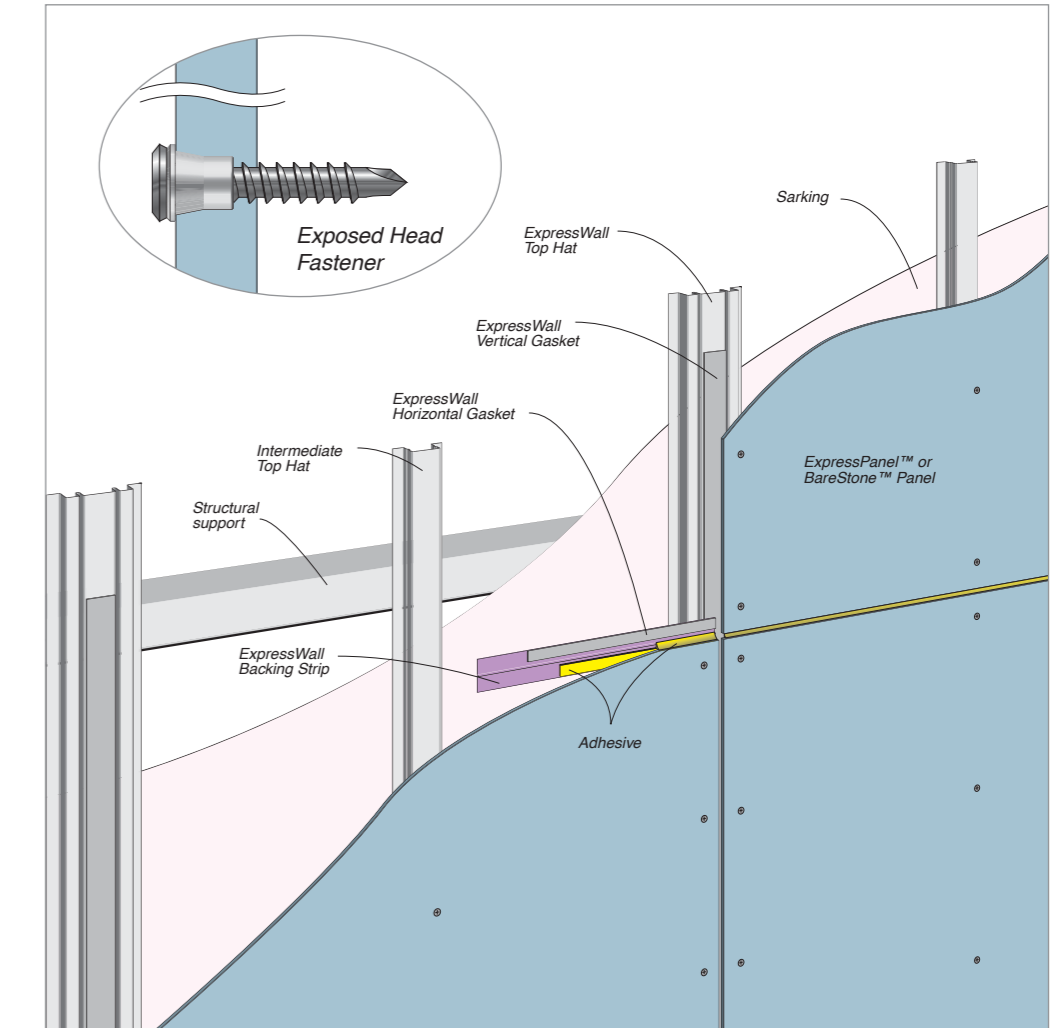
- Office Buildings
- Commercial Buildings
- Residential Homes and Apartment Buildings
- Supermarkets
- Shopping Centres

ACCESSORIES:

A full range of Cemintel BareStone™ accessories, including top hats, backing strips and gaskets are detailed in the technical manual.

Thickness (mm)	Width (mm)	Length (mm)
9	1200	2400
9	1200	3000

SYSTEM OVERVIEW





CEMINTEL EXPRESSWALL™

Combining a modern, expressed joint aesthetic with a fast and economical top hat installation system, Cemintel ExpressWall™ is an ideal façade solution for commercial and industrial applications.

Cemintel ExpressPanel's™ provide architects and designers with a high level of creative freedom. They can be arranged in a variety of patterns and are pre-sealed to accept a wide range of decorative finishes.

Cemintel ExpressWall™ utilises a top hat fixing system, ensuring both an easy to install and highly durable solution. Vertical top hats have two fixing points for stability and create a structurally sound facade that can even withstand cyclonic conditions. Self-adhesive gaskets are easily attached to the top hat prior to installation, reducing installation time. The gasket seals vertical and horizontal joints, reducing the requirement for sealant and accommodating building movement.

EXPRESSPANEL'S™ ARE MANUFACTURED FROM 9MM COMPRESSED FIBRE CEMENT, PROVIDING A LONG LASTING SOLUTION.



ADVANTAGES:

- Complete engineered system from the one supplier
- Lightweight, low maintenance system
- Exposed joint appearance
- Flat, smooth surface
- Designed for extreme wind pressures
- Tested, drained cavity system
- Suitable for curved applications
- High prefabrication opportunity

APPLICATIONS:

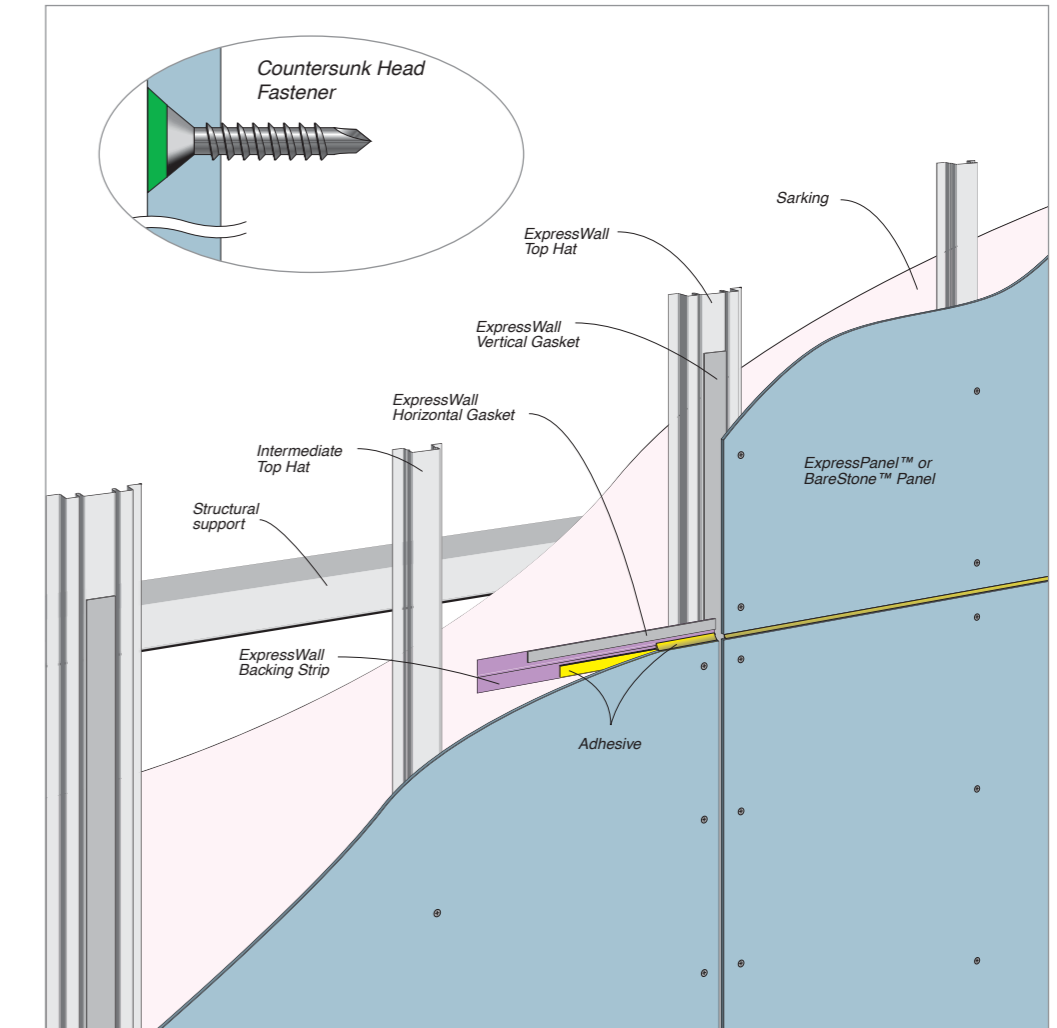
- Office Buildings
- Commercial Buildings
- Apartment Buildings
- Supermarkets
- Shopping Centres

ACCESSORIES:

A full range of Cemintel ExpressWall™ accessories, including top hats, backing strips and gaskets are detailed in the technical manual.

Thickness (mm)	Width (mm)	Length (mm)
9	900	1800
9	900	2400
9	900	3000
9	1200	1800
9	1200	2100
9	1200	2400
9	1200	2700
9	1200	3000

SYSTEM OVERVIEW





CEMINTEL SOFFITLINE™

Cemintel SoffitLine™ offers a complete system solution for commercial applications. Not only does SoffitLine™ create great looking, flush jointed ceilings, the panels are formulated with technically advanced CeminSeal™ Waterblock technology, designed to reduce moisture penetration.

THE PANELS ARE MANUFACTURED FROM 6MM FIBRE CEMENT, PROVIDING A LONG LASTING SOLUTION.



ADVANTAGES:

- Expressed joint or flush joint appearance
- High strength jointing system with reduced sanding
- Easy installation
- Interior and exterior applications
- Smooth surface ready for finishing
- Accepts a wide range of paint finishes

APPLICATIONS:

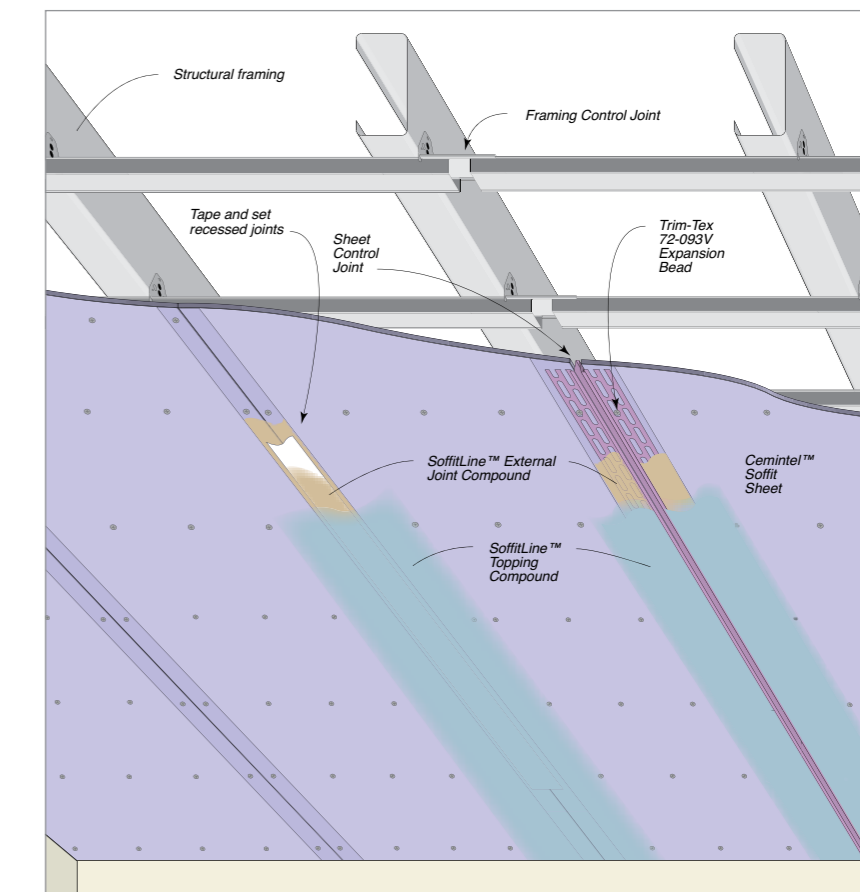
- Shopping Centres
- Office Buildings
- Hospitals
- Schools
- Apartment Buildings

ACCESSORIES:

A full range of system accessories, including the purpose designed jointing system are detailed in the technical manual.

Thickness (mm)	Width (mm)	Length (mm)
6	1200	2400
6	1200	3000

SYSTEM OVERVIEW





CSR Cemintel™

Sales Support

Tel: 13 17 44

Fax: 1800 646 364

CSR designLINK®

Technical Support Service

Tel: 1800 621 117

New South Wales and ACT

376 Victoria Street,

Wetherill Park NSW 2164

Queensland

768 Boundary Road,

Coopers Plains QLD 4108

Victoria

277 Whitehall Street,

Yarraville VIC 3013

South Australia

Lot 100 Sharp Court,

Mawson Lakes SA 5095

Western Australia

19 Sheffield Road,

Welshpool WA 6106

Tasmania

11 Farley Street,

Derwent Park, Hobart TAS 7009

Northern Territory

Cnr Stuart Hwy & Angliss Street,

Berrimah NT 0828