



1300 301 755  
SAYFA.COM.AU

ENGINEERED STAIR & PLATFORM  
SYSTEMS BUILT MODULAR  
PROVIDING ON SITE MEASUREMENT  
FLEXIBILITY & SIMPLE INSTALLATION

PRODUCT  
BROCHURE



# KOMBI<sup>®</sup> MODULAR ACCESS SYSTEM

## OVERVIEW

Sayfa Group leads the industry in the design, installation and management of access and fall protection safety systems.

Kombi is a proprietary modular stair and platform system designed to allow on site assembly and customisation to suit exact site parameters, reducing design and delivery lead times considerably.

Kombi is the safest solution for access and fall protection whilst accessing and maintaining elevated systems and equipment.

### POST BRACKET

Attaches support structure to platform



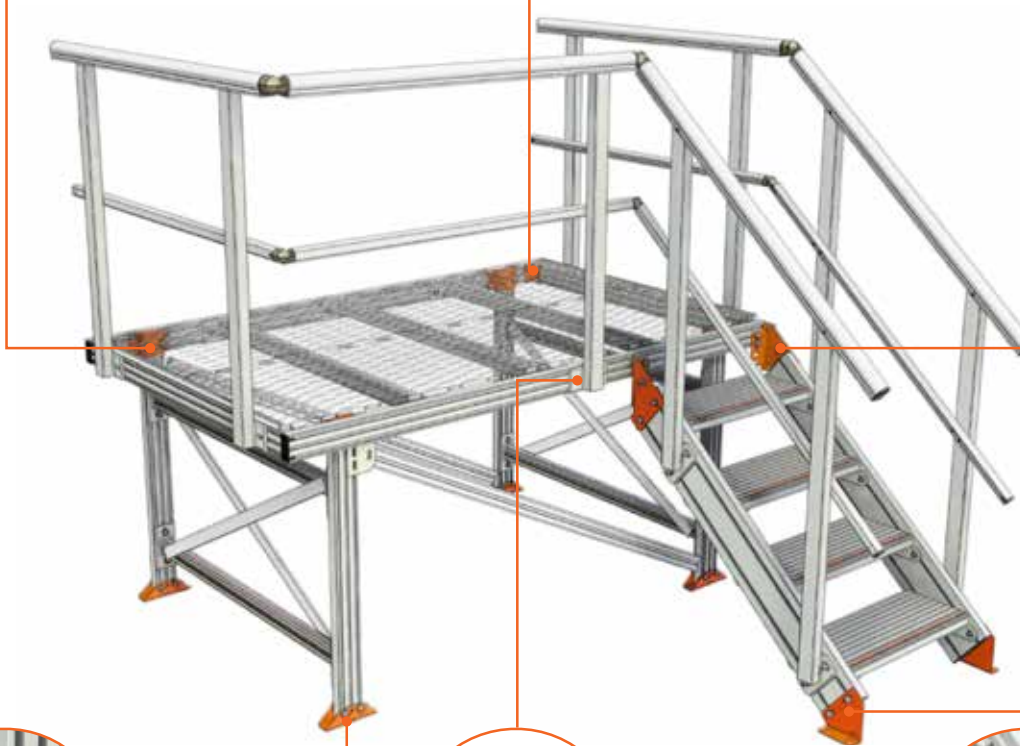
### CORNER BRACKET

Secures platform corner structure



### ADJUSTABLE STAIR BRACKET

Allows varying degree of stair angle and tread positioning



### PLATFORM FOOT

Secures platform to ground



### KOMBI T-BOLT

Proprietary KOMBI fastening system



### STAIR FOOT

Attaches stair to landing surface

UNIQUE  
PRODUCT FEATURE

## MODULAR ADVANTAGES

### VARIABLE STAIR ANGLE & TREAD SPACING

KOMBI stairs can be adjusted to suit the required stair angle whilst allowing each individual tread to be leveled and spaced accordingly. This minimises preinstallation precise on site measurement and fabrication requirements resulting in significant time savings.

PATENTS AND DESIGN REGISTRATIONS APPLY



---

# PRE-ENGINEERED, MODULAR SYSTEMS PROVIDING EFFORTLESS ASSEMBLY

---

## 1 SUPPORT MODULE

- This module is constructed first
- Constructed using Kombi 80 aluminium extrusion
- Lateral bracing construction to suit size and loading of platform
- Kombi support components connected using profiled brackets secured with M10 Kombi T-Bolt



## 2 PLATFORM MODULE

- This module is constructed second
- Constructed using Kombi 80 or 180 aluminium extrusion dependent on platform size and spans required
- Guardrail posts constructed using 58mm x 38mm aluminium extrusion with profiled top and midrails attached to post
- Platform deck constructed from expanded aluminium mesh
- Kombi platform components connected using profiled brackets secured with M10 Kombi T-Bolt



## 3 STAIR MODULE

- This module is constructed third
- Constructed using Kombi 180 aluminium extrusion for stair stringer and Kombi tread aluminium extrusion for stairs
- Stair module angle designed to function between 25° and 45°
- Stair treads designed to be leveled and spaced to suit final stair angle
- Handrail posts constructed using 58mm x 38mm aluminium extrusion with profiled hand and midrails attached to posts
- Kombi stair components connected using profiled brackets secured with M10 Kombi T-Bolt



# KOMBI® MODULAR ACCESS SYSTEM

## CONFIGURATIONS

Kombi systems are constructed using a standard range of components configured in different ways to suit application.

Kombi is set up as pre-configured systems supplied in kit form allowing shortened delivery times.

Kombi can also provide purpose built designs to suit specialist applications. This can be supplied in kit form or assembled if required.



### PLATFORM WITH SINGLE STAIR

- Used for access to machinery and elevated equipment for inspection and maintenance
- Platform size and height is adjustable to suit specific site requirements
- Stair adjustable to suit final platform height
- Suited to free-standing construction where required
- Designed to AS1657:2018



### CROSSOVER WITH DUAL STAIR

- Used for access over ducts, conveyors and machinery
- Stair heights are adjustable to suit specific bridge height
- Bridge lengths in modules from 1.0m to 6.0m
- Suited to free standing construction where required
- Designed to AS1657:2018



### SUSPENDED PLATFORM

- Used for access in ceiling spaces or above heavy machinery for maintenance
- All platform and supports are adjustable allowing on site customisation where required
- Platform supports at approx 2.0m intervals depending on required loads and spans
- Designed to AS1657:2018

## DESIGN - CREATE - BUILD

---

# LIGHTWEIGHT, HIGH STRENGTH ALUMINIUM SYSTEM ALLOWS ENDLESS DESIGN AND INSTALLATION FLEXIBILITY

---



## MULTI STAGE STAIRWAY

- Used for access up to 6.0m in height with change in direction platforms
- Adjustable stair treads allows flexibility of platform height to suit supporting structure
- Suited to free-standing construction where required
- Designed to AS1657:2018



## PURPOSE BUILT PLATFORM STRUCTURES

- Used for access to cooling towers, water tanks and machinery where platform is required to be custom built
- Kombi facilitates on site construction allowing site specific design flexibility and attachment to structure
- The Kombi high strength bracing system allows platforms to be free standing up to 6.0m
- Designed to AS1657:2018

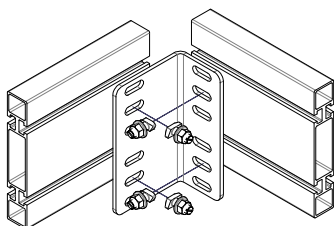
# KOMBI® MODULAR ACCESS SYSTEM

## COMPONENTS

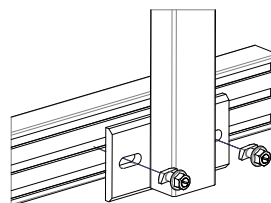
Kombi components include a combination of stainless steel profiled support brackets and aluminium platform beams, support posts and stair tread extruded profiles.

All Kombi components are proprietary to the system and designed to be used in multiple applications and configurations.

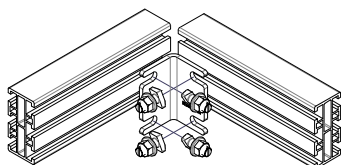
For simplified construction, the unique Kombi T-Bolt allows insertion and fixture through the face of the profiled support brackets into the fixing slot of the extrusion.



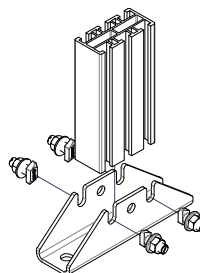
**KB13.180**  
**KOMB1 180 ANGLE BRACKET**



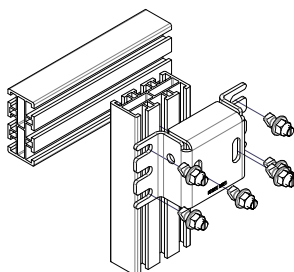
**KB603S**  
**KOMB1 SIDE MOUNT POST KIT**



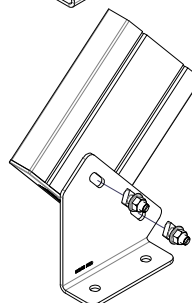
**KB013.80**  
**KOMB1 80 BRACKET**



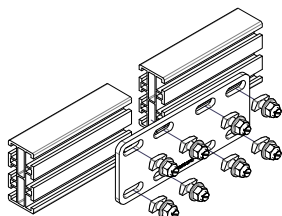
**KB026**  
**KOMB1 80 BASE SUPPORT FOOT**



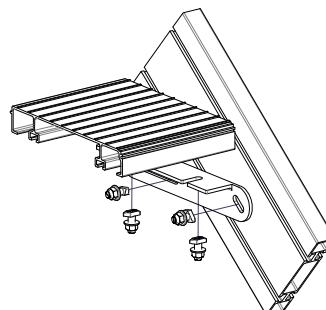
**KB021**  
**KOMB1 80 TOP SUPPORT BRACKET**



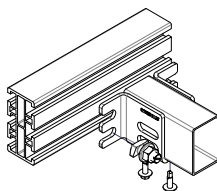
**KB034**  
**KOMB1 STAIR FOOT 180MM ADJUSTABLE**



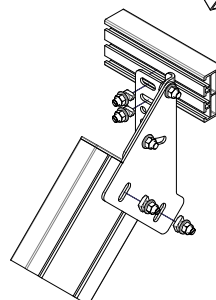
**KB016.80**  
**KOMB1 80 POST JOINING PLATE**



**KB019**  
**KOMB1 STAIR TREAD CONNECTION BRACKET**



**KB012**  
**KOMB1 80 HORIZONTAL SUPPORT BRACKET**



**KB031**  
**KOMB1 STAIR MOUNTING ADJUSTABLE BRACKET**

# KOMBI® MODULAR ACCESS SYSTEM

## DESIGN

Standard Kombi configurations are designed to AS1657-2018. Variation to configuration to accommodate wind loading and other site specific influences needs to be taken into account.

Kombi systems are suitable for harsh environments including external applications. Very high acidic environments will require additional coating protection to aluminium components.

Kombi is delivered as a flat pack solution for assembly on site or pre-assembly and delivered as a complete unit.



### SUPPORT MODULE DIMENSIONS

WIDTH	HEIGHT
600 Series	From 600mm to 6.0m in 200mm increments
900 Series	
1200 Series	

Note: Many other configurations are available - contact Sayfa



### PLATFORM MODULE DIMENSIONS

WIDTH	HEIGHT
600 Series	From 600mm to 6.0m in 300mm increments
900 Series	
1200 Series	

Notes: Many other configurations are available - contact Sayfa.  
Guardrails provided to suit platform design.



### STAIR MODULE DIMENSIONS

TREAD WIDTH	VERTICAL HEIGHT
610mm	From 400mm to 4.0m in 200mm increments
915mm	
1220mm	

Notes: Many other configurations are available - contact Sayfa.  
Guardrails provided to suit stair design.

**KOMBI**®  
MODULAR ACCESS

# IDEAL FOR CONFINED SPACE SOLUTIONS ALLOWING EASY ACCESS & IN SITU ASSEMBLY



No.	CODE	DESCRIPTION
1	GW382	HANDRAIL ELBOW
2	GW383	KNEERAIL ELBOW
3	GW374	HANDRAIL TUBE
4	GW375	KNEERAIL TUBE
5	KB603S	GUARDRAIL POST SIDE MOUNT
6	GW300	STAIR HANDRAIL POST
7	GW374	STAIR HANDRAIL TUBE
8	GW375	STAIR KNEERAIL TUBE
9	GW378	HANDRAIL END CAP
10	GW379	KNEERAIL END CAP
11	KB003	KOMBI 180 EXTRUSION
12	KB010	STAIR TREAD
13	KB034	STAIR ADJUSTABLE FOOT

No.	CODE	DESCRIPTION
14	KB026	BASE SUPPORT BRACKET 80MM
15	KB001	KOMBI 80 EXTRUSION
16	KB530	SUPPORT BRACE
17	KB021	TOP SUPPORT BRACKET 80MM
18	KB013.80	BRACE SUPPORT BRACKET
19	KB005	KOMBI T-BOLT
20	GW320	TOE BOARD
21	KB013.80	ANGLE BRACKET 80
22	GW335	PLATFORM MESH
23	KB060	PLATFORM CROSS SUPPORT
24	KB031	STAIR MOUNT BRACKET
25	GW329	PLATFORM MESH EDGE BAR



---

# KOMBI PLATFORMS & STAIRS ARE DESIGNED TO AS1657:2018

---



DESIGN - CREATE - BUILD



# ORDER SPECIFICATION

PLATFORM WITH SINGLE STAIR	
1. For internal or external use	<input type="checkbox"/> Internal <input type="checkbox"/> External (On Ground) <input type="checkbox"/> External (On Roof)
2. Ground support structure type	<input type="checkbox"/> Concrete <input type="checkbox"/> Steel <input type="checkbox"/> Timber   Other:
3. Lateral support structure availability (must be suitable for design loads)	<input type="checkbox"/> None <input type="checkbox"/> Minimal <input type="checkbox"/> Significant
4. Height to top of platform deck	Height:
5. Length of platform deck	Length:
6. Width of platform deck	Width:
7. Stair attachment to platform	<input type="checkbox"/> Side mount <input type="checkbox"/> Front mount
8. Are persons working, walking under platform	<input type="checkbox"/> Yes <input type="checkbox"/> No

CROSS OVER WITH DUAL STAIR	
1. For internal or external use	<input type="checkbox"/> Internal <input type="checkbox"/> External (On Ground) <input type="checkbox"/> External (On Roof)
2. Ground support structure type	<input type="checkbox"/> Concrete <input type="checkbox"/> Steel <input type="checkbox"/> Timber   Other:
3. Lateral support structure availability (must be suitable for design loads)	<input type="checkbox"/> None <input type="checkbox"/> Minimal <input type="checkbox"/> Significant
4. Height to underside of platform (add sufficient clearance above object)	Height:
5. Length of platform deck	Length:
6. Width of platform deck	Width:
7. Are persons working, walking under platform	<input type="checkbox"/> Yes <input type="checkbox"/> No

SUSPENDED PLATFORM	
1. Overhead support structure type	<input type="checkbox"/> Concrete <input type="checkbox"/> Steel <input type="checkbox"/> Timber   Other:
2. Lateral support structure availability (must be suitable for design loads)	<input type="checkbox"/> None <input type="checkbox"/> Minimal <input type="checkbox"/> Significant
3. Height from top of platform deck to support structure	Height:
4. Length of platform deck	Length:
5. Width of platform deck	Width:
6. Are persons working, walking under platform	<input type="checkbox"/> Yes <input type="checkbox"/> No

MULTI STAGE STAIRWAY	
1. For internal or external use	<input type="checkbox"/> Internal <input type="checkbox"/> External   Other:
2. Lateral support structure availability (must be suitable for design loads)	<input type="checkbox"/> None <input type="checkbox"/> Minimal <input type="checkbox"/> Significant
3. Height from top of exit platform to ground	Height:
4. Heights from top of intermediate platform(s) to ground	Height(s):
5. Width of stairway	Width:
6. Confirm stairway users	<input type="checkbox"/> Maintenance personnel only <input type="checkbox"/> Other (specify) _____

# TECHNICAL SPECIFICATION

## SYSTEM CODE

KOMBI SUPPORT STRUCTURE, PLATFORM & STAIR SYSTEM  
KB6000

## TECHNICAL DATA

### MATERIALS

- Manufactured from high grade structural aluminium
- Kombi fixing brackets, joining plates and support feet manufactured from profiled stainless steel plate powder coated burnt orange
- Kombi T-Bolt manufactured from stainless steel

### DIMENSIONS

- Kombi 80 extrusion: 80 x 38mm
- Kombi 180 extrusion: 180 x 32mm
- Platform support extrusion: 58 x 38mm
- Stair tread: 250 x 40mm
- Handrail post extrusion: 58 x 38mm
- Aluminium expanded mesh: 600 x 13mm

### FIXINGS

- Kombi T-Bolt: M10 x 25
- Tek screw: 12g stainless steel

### WEIGHT

- Kombi 80 extrusion: 2.6kg/m
- Kombi 180 extrusion: 4.0kg/m
- Kombi platform deck (aluminium mesh only - 600mm wide): 4.2kg/m<sup>2</sup>
- Kombi stair tread: 3.9kg/m

### WORKING LOAD LIMIT

- Kombi platforms are designed to AS1657-2018 (Platform working load limit 2.5kPa)
- Kombi stairs are designed to AS1657-2018 (Stair working load limit 2.5kPa)

## COMPLIANCE

Kombi modular access systems are designed to conform with requirements of Australian Standards AS1657:2018 and relevant statutory OHS codes of practice and guidelines.

## TESTING

Testing and performance based on requirements of Australian Standard AS1657-2018 and AS/NZS1170 under live load conditions.

## PRODUCT WARRANTY

10 years from date of purchase subject to correct configuration and installation. Use and maintenance to be in accordance with manufacturer's specifications and recommendations.

## INSPECTION AND MAINTENANCE

Inspection required every 12 months by competent person in accordance with manufacturer's specifications and requirements of Australian Standards AS1657-2018.

## IMPORTANT NOTE

Failure to supply and/or install proprietary product in accordance with above standards and codes, specifications and instructions voids complete system certification and/or warranty.

PRODUCT  
BROCHURE





1029 MOUNTAIN HWY  
BORONIA VIC 3155  
AUSTRALIA

T 1300 301 755  
F 1300 881 092  
E [INFO@SAYFA.COM.AU](mailto:INFO@SAYFA.COM.AU)

FOR MORE INFORMATION  
VISIT [SAYFA.COM.AU](http://SAYFA.COM.AU)



## THE SAYFA GROUP

### WE SAVE LIVES!

This is our Mission, and it drives our Vision to BRING EVERY WORKER HOME SAFELY.

Sayfa Group leads the industry in the design, installation and management of access, fall protection and ground safety systems. As an Australian owned company, we engineer and rigorously test our proprietary systems to exceed national and international standards. Simple installation and easy to use systems are our key drivers for ensuring maximum effectiveness, improved safety and compliance with Occupational Health and Safety standards in the workplace.

### OUR VALUES

We are governed by the following principles in everything we do:

- A – Accountability / Totally responsible and answerable for our actions.
- L – Loyalty / Steadfast and dependable based on our values in our dealings with one another.
- I – Integrity / Honest and sincere, we do what we say, on time every time.
- V – Value Driven / Increase what's of value in view of a win win plan for all.
- E – Enthusiastic / Motivated and inspired to continuously perform better.

### COMMITMENT

We are passionate about our work with every product a testament to our commitment of world class safety, quality and performance. Our obligation is to live up to our own high standards as well as those of our customers and stakeholders ensuring total peace of mind.

