



00011AUG15



AFS Systems Pty Ltd  
AFS Unit Trust  
(Reference No 3610117595314)  
ABN 455 760 727 88  
PO Box 234  
Minto NSW 2566  
110 Airds Road  
Minto NSW 2566

For more  
information contact:

**1300 727 237**

[afswall.com.au](http://afswall.com.au)

[afssales@csr.com.au](mailto:afssales@csr.com.au)

You  Tube



©AFS Systems Pty Ltd 2015. Except as provided by the Copyright Act of 1968, no part of this publication may be reproduced in any form or by any means with the prior written permission of AFS Systems Pty Ltd.



# REDIWALL®

## PVC PERMANENT FORMWORK

EASY TO HANDLE, QUICK TO INSTALL, READY TO POUR







**Load bearing and versatile**

ideal for internal party walls, basements, corridors, lift and stair walls...



**Robust panels**

with large kidney-shaped holes for better concrete flow during core filling



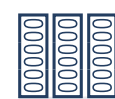
**AS3600 compliant**

certified for resistance to fire and water penetration



**Cut to size**

supplied to size needed to minimise wastage



**Large stocks, short leads**

delivered to your site in 5 days or earlier



**No hidden costs**

quote includes everything needed, delivered to site

**REDIWALL®**

**Two sizes, unlimited application**

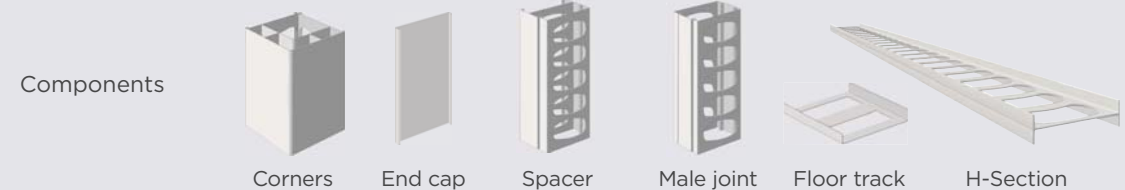
AFS REDIWALL® is a PVC permanent formwork system and a time-saving answer to conventional concrete and masonry. Its precision-extruded components slide easily into place, automatically interconnecting for rapid assembly. And installations can be done without any training.

AS3600-compliant, REDIWALL® is load bearing for multi level structures. And it provides a reliably clean, even and water-resistant surface that doesn't require any finishing.

AFS maintains stocks of REDIWALL® to ensure prompt delivery, while a cut-to-size option avoids wastage and makes for even quicker core filling and completion.



|   |               | RW 150   | RW 200            |
|---|---------------|--|-------------------|
| Wall thickness                                      | Overall       | 150  | 200               |
|   | Concrete core | 145  | 195               |
| Application   |               | Basements • Party walls • Columns • Retention tanks<br>Retaining walls • Foundation walls<br>Service and stormwater pits |                   |
| Acoustic rating (STC)                               |               | 52   | 55                |
| Fire resistance (FRL)                               |               | 4 hours  | 4 hours           |
| Concrete quantity (m <sup>3</sup> /m <sup>3</sup> ) |               | 7.2m <sup>2</sup>  | 5.4m <sup>2</sup> |



**3 Step Installation**

1

Panels are readily installed by hand—no training required



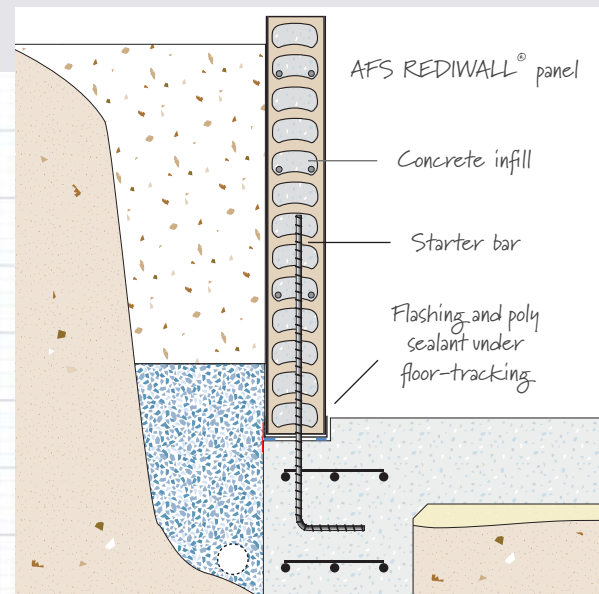
2

Purpose-built braces are available for hire



3

A single core fill is all that's needed for panels up to 3.5m



Basements • Party walls • Columns • Retention tanks • Retaining walls • Foundation walls • Service and stormwater pits

Delivered cut-to-size as required to avoid wastage

Easily installed by hand—no training needed

Quickly assembled and made ready for fast filling

