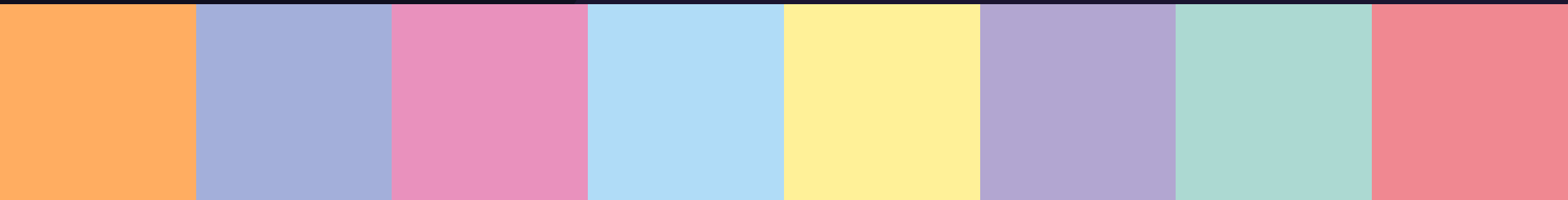




*What's your  
flavour?*

The tastiest colour palette  
from the Perspex® brand



SWEET  
PASTELS

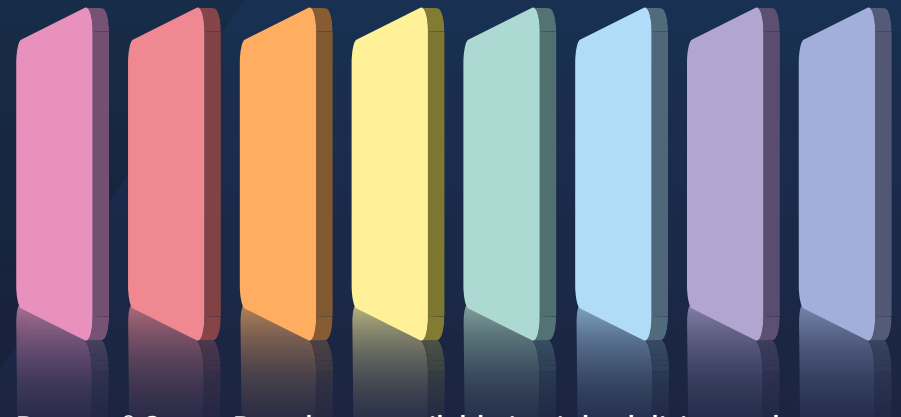
What's your  
flavour?



Presenting the cooler and softer side of the Perspex<sup>®</sup> acrylic colour spectrum.

This inspiring compilation of tones will take your imagination beyond its limits; with a Pick 'n' Mix of mouth-watering colours to choose from and two flavoursome finishes in one sheet...

**– If this doesn't tickle your taste buds, we don't know what will!**



Perspex<sup>®</sup> Sweet Pastels are available in eight delicious colours in 3050 x 2030mm size sheets in 3mm thickness. Samples are available upon request.

Looking for something different?  
Whatever your requirements, contact us with your bespoke brief to check availability.

The colours shown in this printed document may not exactly match Perspex<sup>®</sup> Sweet Pastels acrylic sheet. Edge colour can change slightly on thermal processing.

**Potential. Performance. Perspex<sup>®</sup>**



**Orange Fizz**

Product Code: **SA 3143**

## **Tasteful displays with character**

Bring your displays to life with these tempting colours that scream personality.

---

☑ RETAIL ☑ DISPLAY





## Bubblegum Blue

Product Code: SA 7490

### Light weight and easy to install

Developed specifically to feed any visual communication application, they are lightweight, yet durable for easy installation from indoor point of sale to external exhibitions.

---

📍 EXHIBITION 📍 SHOP FITTING







## Sour Grape

Product Code: SA 7563

### Strong, durable and hard wearing

They may look soft, but these Sweet Pastel shades are infused with strength for those tough interior requirements, creating products that can last for decades.

---

☑ SCHOOL ☑ OFFICE ☑ LEISURE





## Candy Floss Blue

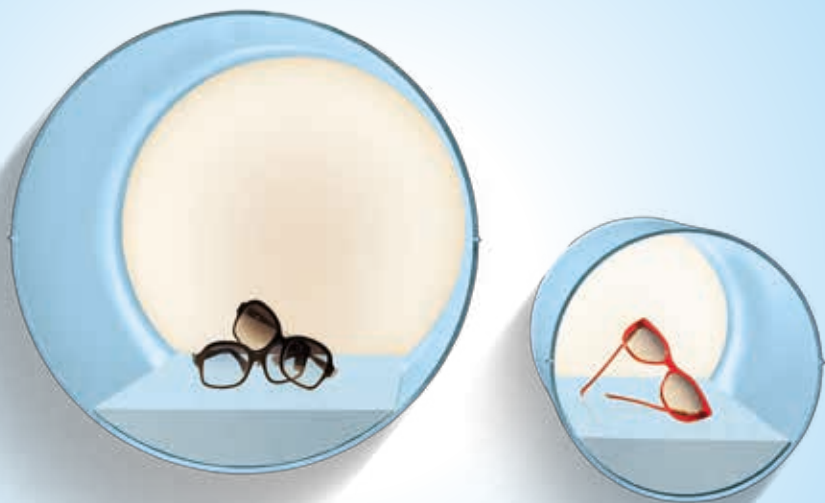
Product Code: SA 7489

### Easy to shape and style

Sweet Pastels are easy to shape and style to your taste; endless possibilities in creative design to feed the appetite of your customers!

---

☑ POS ☑ POP







**Lemon Bonbon**

Product Code: SA 2170

## Trend focused

A colour innovation that is trend focused for the tastemakers of the world and the fashionista inside all of us.

---

🕒 FASHION 🕒 PRODUCT DESIGN





**Parma Violet**

Product Code: SA 7562

## Satin and gloss surfaces all in one sheet

Sure to sweeten up your designs or sugar coat any project; even after thermoforming the satin surface texture remains in immaculate condition.

---

☉ INTERIORS ☉ FURNITURE







**Spearmint Green**

Product Code: **SA 6382**

## **Perspex® 10-year outdoor guarantee**

A special recipe that warrants the Perspex® acrylic 10 year outdoor guarantee, so you can devour any weathering worries and rely on our hard wearing sheet for head turning results in signage and architectural features.

---

🕒 SIGNAGE 🕒 ARCHITECTURAL FEATURES





## Raspberry Sherbet

Product Code: SA 4274

### 100% recyclable

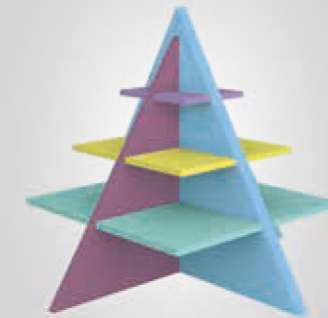
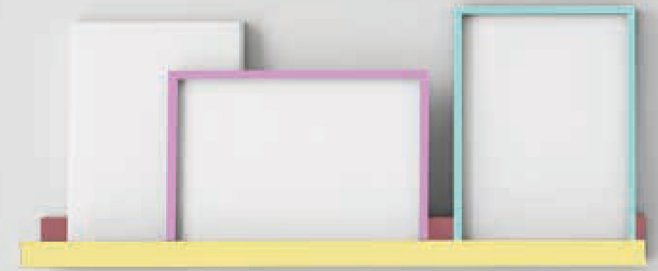
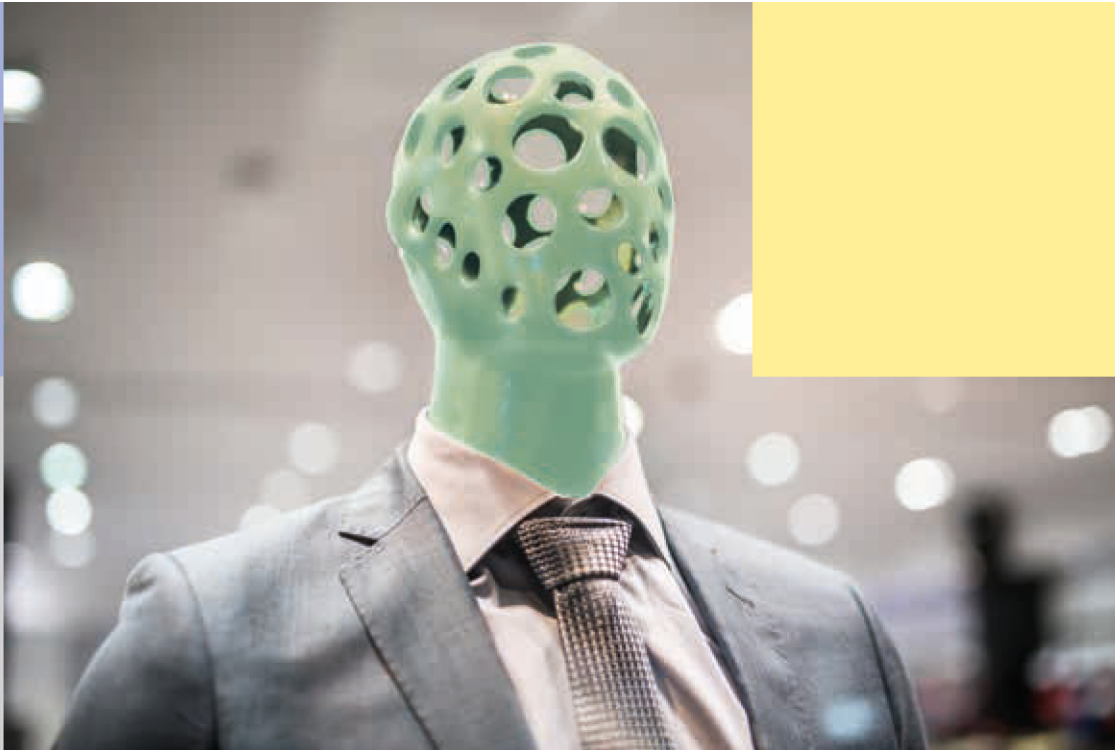
Unlike most plastics, our cast acrylic sheets are 100% recyclable, even in these 8 delicious flavours.

---

♻️ ENVIRONMENTALLY FRIENDLY







**Mitchell Plastics**

Distributed in Australia by  
**Mitchell Plastics**  
32-38 Redwood Drive  
Dingley Vic 3172  
Telephone (03) 9558 0800  
Facsimile (03) 9558 0557  
sales@mitchellplastics.com.au  
www.mitchellgroup.com.au