

CORIAN®
SOLID SURFACE



NEW
Corian®
Sparkling Sink
Collection.



Sparkling.

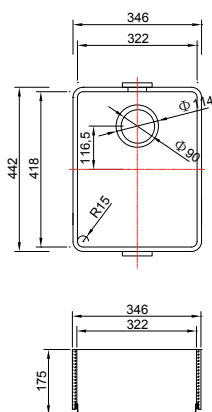
STAINLESS STEEL BOTTOM AND NARROW CORNER RADIUS

Available in Glacier White, Designer White, Venaro White,
Pearl, Cirrus White, Rain Cloud & Lava Rock

Corian® Sparkling Kitchen Sinks combine the beauty of Corian® with durable stainless steel which resists heat (in particular boiling water). Sparkling sinks are easy to clean, hygienic and can be integrated into a matching Corian® benchtop with a colour of your choice. Sparkling sinks can be integrated seamlessly into a Corian® benchtop using a seamless joining technique. This creates a “one piece look” thus creating an elegant, high performing and practical appearance to your kitchen.

Corian® Sparkling Kitchen Sink Collection.

Sparkling 021



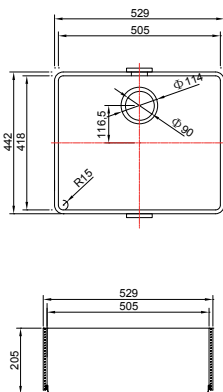
DIMENSION

322(L)*418(W)*175(D)

NOTES

- Available in most Corian® colours
- Wall thickness: 12 mm
- Available with overflow
- Formed inside corners on all sides - no joins!
- Heat-proof stainless-steel bottom
- Including waste kit package
- Can be integrated seamlessly into a Corian® benchtop
- Sound proof/anti-vibration coating on sink base

Sparkling 023



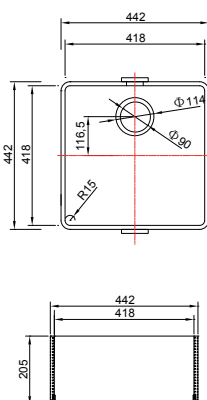
DIMENSION

505(L)*418(W)*205(D)

NOTES

- Available in most Corian® colours
- Wall thickness: 12 mm
- Available with overflow
- Formed inside corners on all sides - no joins!
- Heat-proof stainless-steel bottom
- Including waste kit package
- Can be seamlessly integrated into a Corian® benchtop
- Sound proof/anti-vibration coating on sink base

Sparkling 024



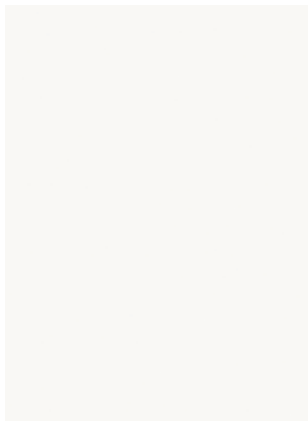
DIMENSION

418(L)*418(W)*205(D)

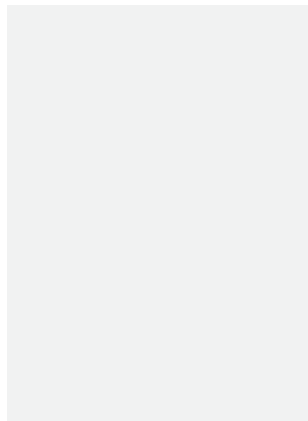
NOTES

- Available in most Corian® colours
- Wall thickness: 12 mm
- Available with overflow
- Formed inside corners on all sides - no joins!
- Heat-proof stainless-steel bottom
- Including waste kit package
- Can be integrated seamlessly into a Corian® benchtop
- Sound proof/anti-vibration coating on sink base

Corian® Colours.



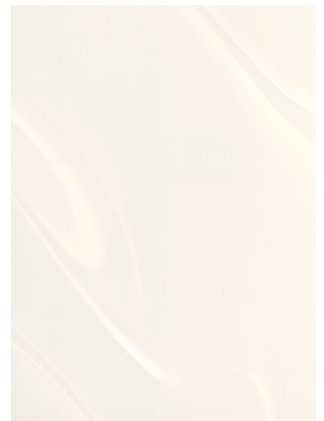
Glacier White [A]



Designer White [B]



Cirrus White [E]



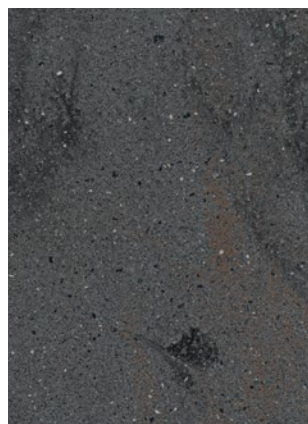
Venaro White [E]



Pearl [E]



Raincloud [E]



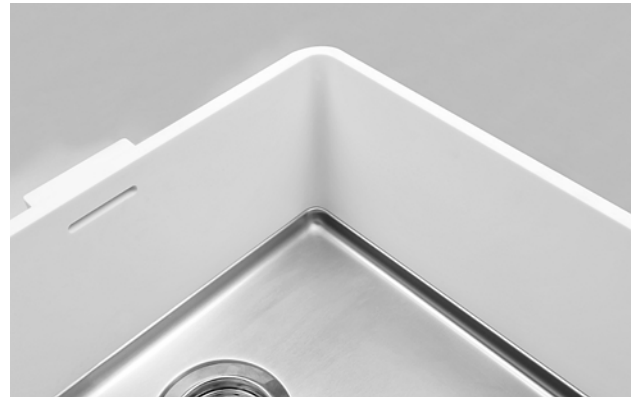
Lava Rock [E]

Please note: Veined colours of Corian® may show a slight variation at the seamless join where the Sparkling sink meets the Corian® benchtop. This can be minimised when the Sparkling sink is set into a deep rebate. The inside radius of the Sparkling sink (Radius 15mm) may have a slight colour variation. This is normally very minimal and will not affect either the performance or the appearance.

Technical details.

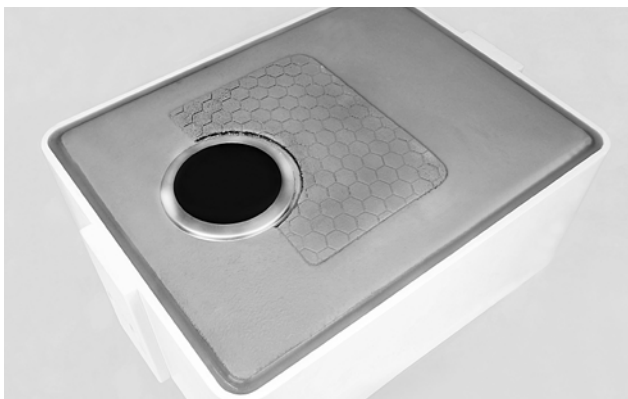


Sparkling sinks have a 12mm thick wall made of Corian®, which facilitates the integration of the Sparkling sink into the Corian® benchtop colour of your choice. The result is a seamless, easy to clean, hygienic transition from benchtop to sink.



The innovative technique in producing the corner radius of the Sparkling sink provides ultimate strength, (as the thickness in the corners is not reduced in the majority of cases). This technique also reduces the risk of discolouration in the corner radius of the Corian®.

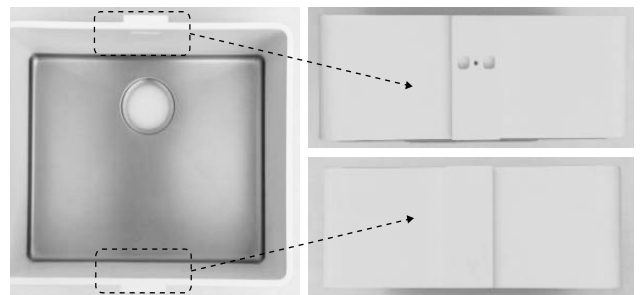
The smaller 15mm corner radius in the Sparkling sink range provides a contemporary look without compromising the easy cleaning attributes of Corian®.



The heat proof quality of the stainless steel base has a sound reducing coating and an anti vibration pad. This is a real asset in a bustling kitchen as noise is greatly reduced (Waste disposal units should NOT be used with this sink)



The innovative creation of the overflow system has a $>0.20\text{l/s}$ flow rate. As this system includes no other plastic or metal parts within the sink, achieving an uncluttered look. The slim overflow slot with an anti blocking Corian® strip ensures an elegant appearance with hygienic practicality.



The double sided re-enforced strips of Corian® greatly strengthen the joints, thus ensuring trouble free longevity of the sink.



Care and maintenance.

What is required for daily cleaning?

The only maintenance required is regular washing with hot soapy water to remove surface residue. For more stubborn stains use a cleaner such as Gumption.

Will food drink stain Corian®?

Corian® is non porous and highly resistant to stains. Exposure to substances such as red wine, oils and vinegar will not permanently stain Corian®. It is best to wipe up spills immediately. More stubborn stains can be removed using a scotchbrite pad using a gentle abrasive cleaning agent such as Gumption.

Can hot pans be placed into Sparkling sinks?

The advantage of using Sparkling sinks with the stainless steel base means that hot pans and boiling water can be placed within the sink without causing any damage to the stainless steel.

Will the sink base scratch easily?

Although stainless steel is hard and durable, care must be used when placing pots and pans into the sink as it may scratch. As with any high quality work surface care should be taken to avoid scratching the surface. The use of a plastic mat in the sink base may help prevent this.

The beauty of Corian® is that even after many years of use, your Corian® sink will still look good. Most damage can be repaired and the original surface restored. It provides a long term, renewable and easy-to-work on sympathetic surface.

Quality

Even after many years of use your Corian® Sparkling sink and benchtop will retain its good looks. Most damage can be repaired with the original luster of benchtop surface being restored. The great blend of a hard, durable stainless steel heatproof base with the side walls of Corian® creates a beautiful and robust kitchen sink. The Corian® Sparkling sink can be seamlessly integrated into the Corian® benchtop of choice creating a flowing, one piece, seamless look.

Cleaning the Sparkling sink junction between stainless steel and Corian® side wall

To make cleaning easy the stainless steel base is designed to protrude 1/1.5mm at the junction with Corian® inside wall. By having a secure and integrated seaming technique which is totally watertight, cleaning your Sparkling sink is made easy. Using a solution of water with a small amount of bleach filled about the stainless steel junction will clean and remove any residue which may build up over time. This is easiest and most practical way to ensure your Sparkling sink remains looking like new.






casf

your space your way

PO Box 151, Main Street, Blacktown NSW 2148

 1300 795 044

 orders@casf.com.au

 www.casf.com.au

Corian®, the Corian® Design logo and Make Your Space™ are registered trademarks or trademarks or copyrighted material of E. I. du Pont de Nemours and Company or its affiliates. © Copyright 2018 E. I. du Pont de Nemours and Company or its affiliates. Only DuPont produces Corian®. Other logos, registered trademarks and trademarks are property of their respective owners. All rights reserved. No copy or extraction of its content is authorised. This document is protected by all applicable laws on copyright and intellectual property.


CORIAN®
SOLID SURFACE
