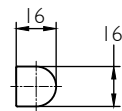
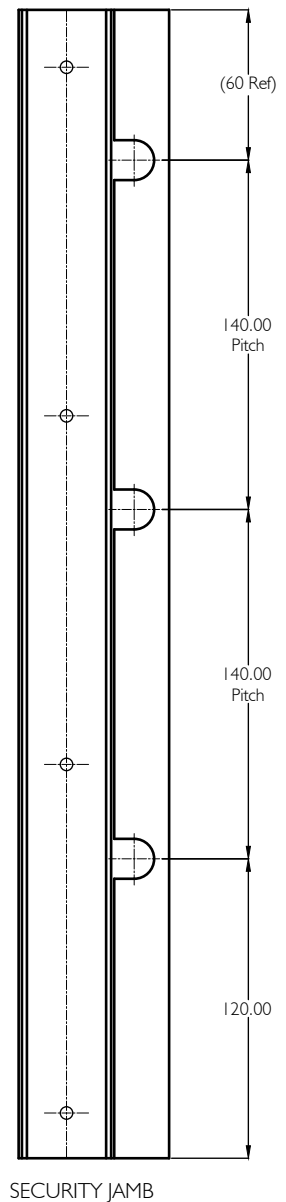
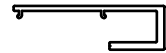
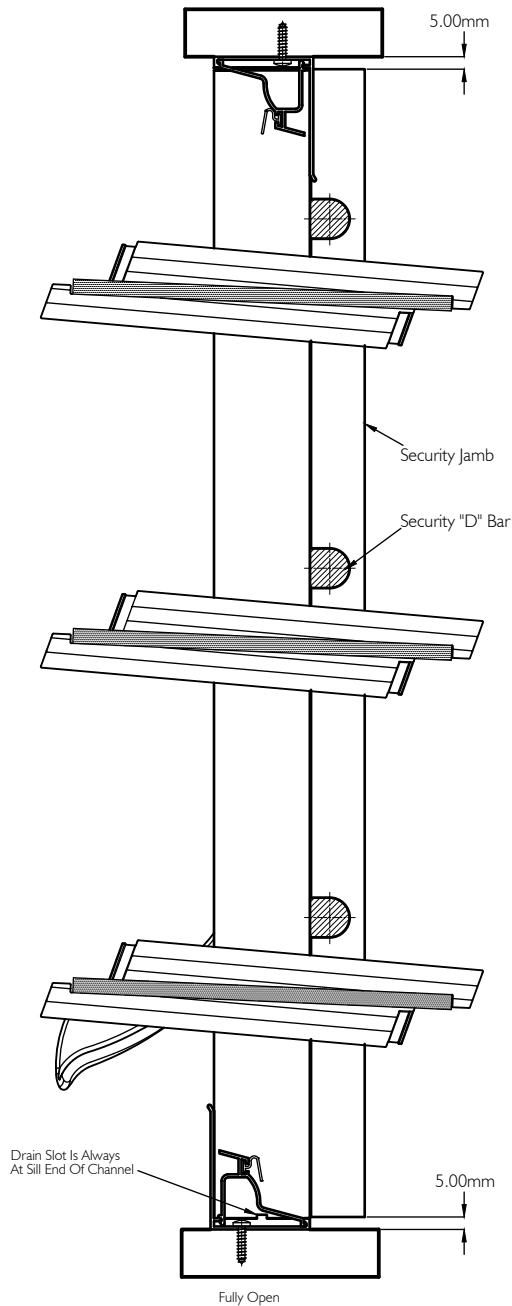
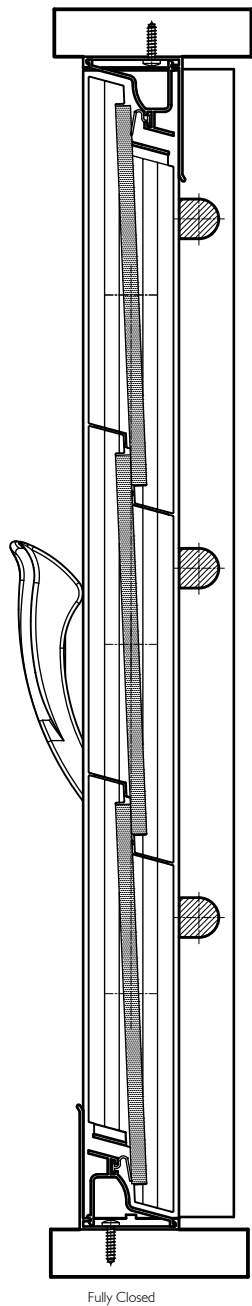


ALTAIR MK2 I52 STANDARD HEIGHT LOUVRE in COMPONENT FORM WITH SECURITY JAMB



Security "D" Bar Details

No Extra Bars Are Required On Security Jamb With Extension

Rev	Description	Approved By	Date
C	Top Down Dimensioning changed to bottom up	J.G	16/9/03
D	Drain Slot added	J.G	8/10/03
E	Security bar reduction length was -8mm	J.G	20/1/04
F	Added further information about clip version	A.E	17.3.16

Proprietary and confidential

The information contained in this drawing is the sole property of Breezway Australia. Any reproduction in part or as a whole, without the written permission of Breezway Australia is prohibited.

Title:
Altair MK2 I52 Standard Height Louvre
in Component Form
with Security Jamb

Drawn by: J.G Date: 23/04/2003 Scale: NTS

breezway

35 Cambridge Street, Coorparoo QLD 4151, ABN 24 081 897 823

Sheet 1 of 2

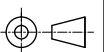
Revision: F

Material:

Finish:

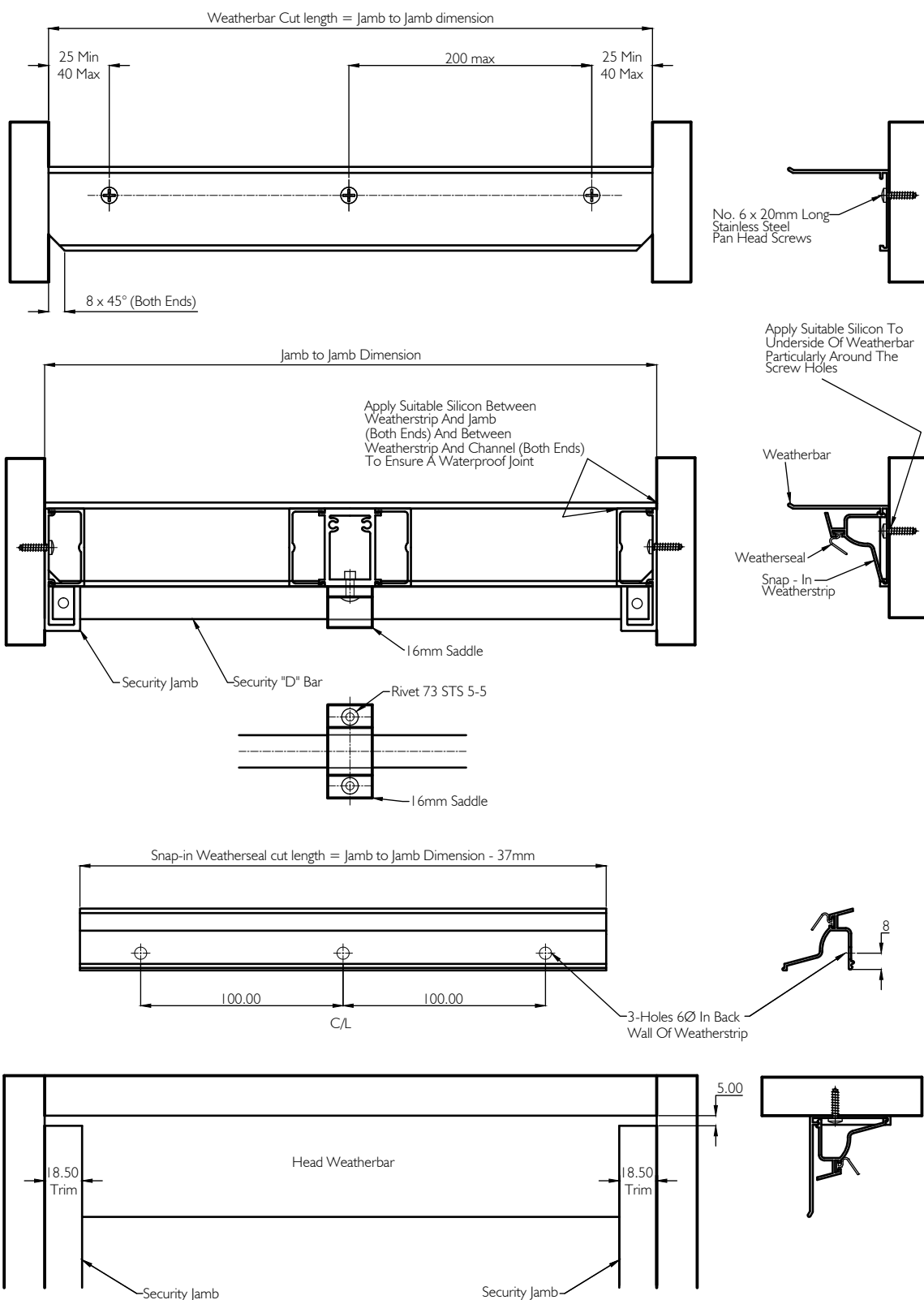
SAP Mat No:

Dwg No: 2.4.1.2.1.1.2 - 1.1



IF IN DOUBT ASK - DO NOT SCALE DRAWING

ALTAIR MK2 152 STANDARD HEIGHT LOUVRE in COMPONENT FORM WITH SECURITY JAMB



Rev	Description	Approved By	Date

Proprietary and confidential

The information contained in this drawing is the sole property of Breezway Australia. Any reproduction in part or as a whole, without the written permission of Breezway Australia is prohibited.

Title:
Altair MK2 152 Standard Height Louvre
in Component Form
with Security Jamb

breezway

35 Cambridge Street, Coorparoo QLD 4151, ABN 24 081 897 823

Drawn by: J.G Date: 23/04/2003 Scale: NTS Sheet 2 of 2 Revision:

Material:

Finish:

SAP Mat No:

Dwg No:

2.4.1.2.1.1.2 - 1.2

IF IN DOUBT ASK - DO NOT SCALE DRAWING