



***Architectural  
Stainless Steel. . .  
Let Us Help You  
Explore The  
Possibilities***

**Stainless Sections**





*Stainless Sections decorative sheets and coils have numerous applications in architectural, industrial, commercial and transportation applications. Architectural applications are not only based on the attractive appearance, which ranges from mirror, etching to patterns and so on, but also on the durability of the product to the high resistance to wear and scratching.*

*Other applications rely on the resistance to damage, longevity and life cycle cost benefits. In commercial applications, patterned sheets and coils find a use where diffused light patterns are required. These patterned surfaces also result in reduced contact areas, which results in the reduction of friction problems commonly found in process machinery.*

## Decorative Sheets and Coils: The Advantages

**High Strength = Long Life.** These patterned sheets are up to 75% stronger than ordinary sheet metal. This results in a down-gauging which allows for less raw material use—saving money and precious environmental resources. This feature is ideal for applications where weight savings is an important consideration.

Stainless steel also has a natural resistance to wear, scratching, denting and tearing. Design rolling helps to enhance this resistance. The material also lends itself to the easy rectification of graffiti spray painting.

**Light Reflection.** Patterned sheets also have the advantage of the ability to reflect and dissipate light for applications where this consideration is important.

**Corrosion Resistance.** As well, the nature of stainless steel makes

this material ideal for use in hygienic applications. Plus, with high corrosion resistance means a finish that will not result in stains which can affect the surrounding clean area.

Architecturally, this corrosion resistance means a consistent finish which will keep through the years.

**Cost Efficient.** When one considers the maintenance and replacement cost of other materials, the life cycle cost of stainless steel is extremely cost effective.

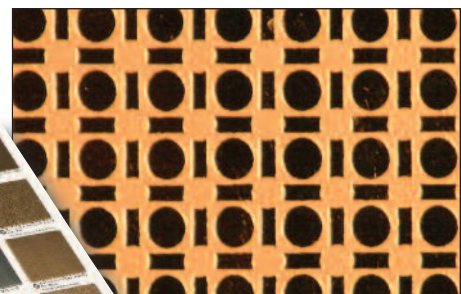
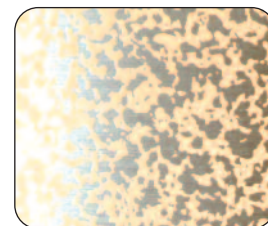
**Recyclable.** Finally, it is not commonly known, but stainless steel is fully recyclable. Hence, should an installed job be demolished, what's up can be torn down and recycled. This not only helps save on landfill and the environment, but also helps to defray refurbishment costs, this material can be sold to scrap merchants.

## Many Application Possibilities To Consider

With the many manufacturing and finishing methods available means not only different looks to help meet your particular needs, but also with differing thicknesses and hardness, applications are just so varied. The only limitation is one's

imagination.

And, with different finishes, we can finish base stock to include paint filling, powder coating and finishing to selected colours. We are also able to supply customised patterns, for instance, your logo.





***The durability of stainless steel as a building product is unquestioned. The use of stainless steel as a decorative product is not always recognised.***

Consider some possible uses:

- ◆ Wall cladding
- ◆ Counter tops
- ◆ Elevator doors and panels
- ◆ Kick boards and push plates
- ◆ Foot plates
- ◆ Fire door cladding/security door cladding
- ◆ Guards and shrouding pressings
- ◆ Petrol pump covers
- ◆ Wheel change machine covers
- ◆ Food truck linings
- ◆ Commercial servery lining and cladding
- ◆ Low friction chutes and slides
- ◆ Toilet partitions
- ◆ Wet areas linings
- ◆ Food processing and servery cladding
- ◆ Furniture trim
- ◆ Bar lining and cladding
- ◆ Furniture trim bar lining and cladding
- ◆ Corner protectors
- ◆ Column cladding
- ◆ Escalator side lining/cladding
- ◆ Trolley buffer strips – on walls
- ◆ Table tops
- ◆ Barbecue cladding
- ◆ Kitchen splashbacks
- ◆ Oven surrounds
- ◆ Planter tubs and street furniture
- ◆ And many more.

## Our Product Offering

***Stainless steel mirror sheets (no. 8).*** Mirror finish (no. 8) sheets are available in both 304 and 316 stainless steels. This effect is produced on BA (bright annealed) 304 grade and 2B finished steel on 316 grade. Thicknesses available in 304 stainless steel range from 0.8 – 3.0 mm. Width is up to 1524 mm and length up to a maximum of 8.0 m.

Stock thicknesses are 0.8, 1.0, 1.2, 1.5, 2.0 and 3.0 mm. Most common sheet sizes available are: 2438 x 1219 mm, 3048 x 1219 mm and 3658 x 1219 mm. Mirror finish sheets in 316 stainless steel are available in thicknesses of 1.0, 1.2, 1.5, 2.0 and 3.0 mm. Sheet size is 2438 x 1219 mm.

Typical applications for 304 grade mirror finish stainless steel includes elevator, escalator, interior cladding, building facades, trim work, as well as signage and so on. 316 grade applications cover marine, building facades, water features and swimming pool areas. Colours available in both titanium and inco process colours.



*Column cladding not only provides protection, but also greatly improves the aesthetics of these otherwise bland objects.*

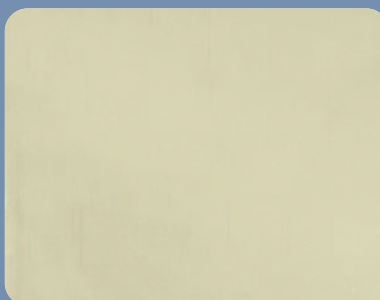
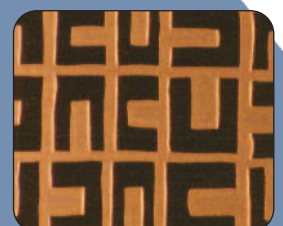
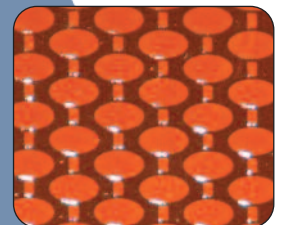


***Vibration finish stainless steel*** is available on 304 stainless steel, with 2B finish or BA finish. Note that the finish is duller on 2B and brighter on BA.

Sheet sizes are 2438 x 1219 mm. Thickness is 1.0 mm. These sheets are available in plain finish.

They can also be supplied in clear tinted powder coat, done locally in Australia. Typical applications for 304 vibration finish stainless steel includes elevator, escalator, interior cladding, building facades, trim work, as well as signage and so on.

Colours are available in both titanium and inco process colours.



*304 titanium gold mirror finish, 1.2 mm;  
2433 x 1219 mm sheet*





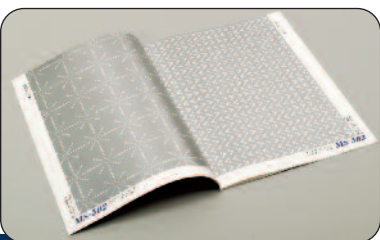
*This school building was given a “splash of colour”—the face side of the stainless steel (AN6 PCL) was powder-coated and then finish-patterned to produce a warm, coloured background.*

**Bead blast finish stainless steel** is available on 304 stainless steel, with 2B finish or BA finish. Note that the finish is duller on 2B and brighter on BA.

Sheet sizes are 2438 x 1219 mm. Thickness is 1.2 mm. These sheets are available in plain finish. They can also be supplied in clear tinted powder coat, done locally in Australia.

Typical applications for 304 stainless steel includes elevator, escalator, interior cladding, building facades, trim work, as well as signage and so on. Colours are available in both titanium and inco process colours.

**Hairline finish stainless steel** is long line finish, which in a way resembles combed hair. Available in 304 grade stainless steel, with 2B finish.



Sheet sizes are 2438 x 1219 mm. Thickness is usually 1.0 mm.

Colours are available in both titanium and inco process colours.



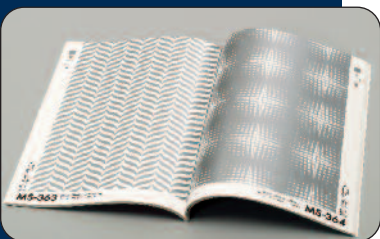
Typical applications includes elevator, escalator, interior cladding, building facades, trim work, as well as signage and so on.

These sheets are available on indent only.



Colours are in process titanium, process inco and clear tinted powder coat.

**Satin brush finish stainless steel** is available in 304 grade stainless steel sheets only. The finish is applied to 2B or 2D2 finish sheets.



*The range of etched patterns available is extremely wide and varied.*

This finish is also known in the industry as super satin and European appliance satin. This finish is very popular for use in elevators and fabrications, e.g., patio barbecue.

Usual sheet size is 2400 x 1220 mm, at 0.9 mm thickness.

Sheets are supplied in plain or process clear tinted powder coat.

**No. 4 finish stainless steel.** This is a satin finish that is available only in colour form. Colourised (process inco or process titanium) is available on indent only. Clear tinted powder coat sheets are available in Australia, on request.

Common sheet size is 2438 x 1219 x 1.2 mm. Applications include elevators, wall cladding, shop fitting, entry foyers, waiting rooms, etc.

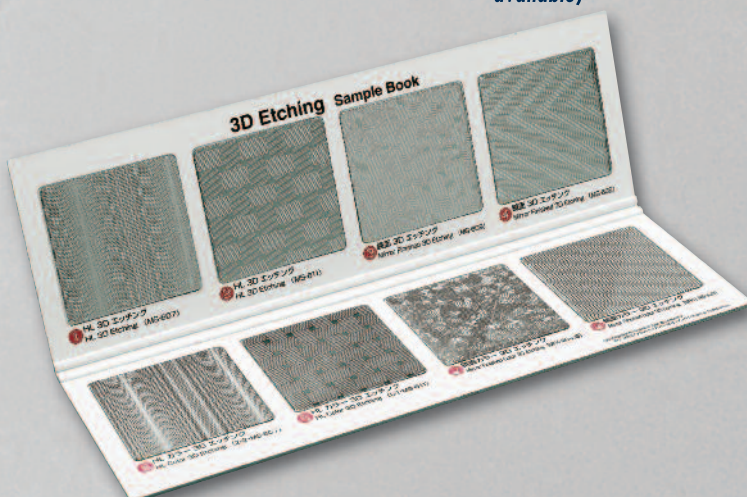
**Rigidized finish stainless steel.** Manufactured in Buffalo, New York (USA), by the Rigidized Metals Corp., these sheets are pattern rolled on 304 grade stainless steel which have been 2D2 finished. We currently stock 6SL, 3ND, 1LTH and 2WL in Australia.

Other patterns are available on indent from Rigidized Metals.

Colouring option is clear tinted powder coat, which is available as applied to rigidized product.

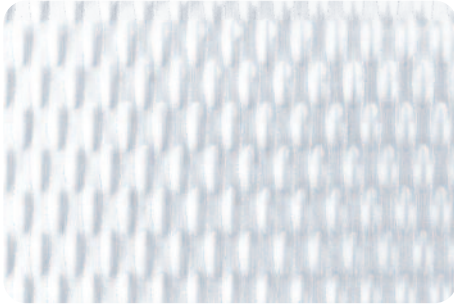


*Example of clear tinted powder coat - colour Sapphire (many other colours available)*

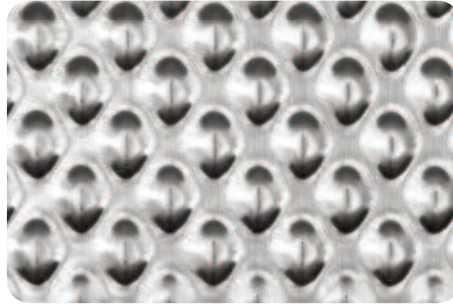




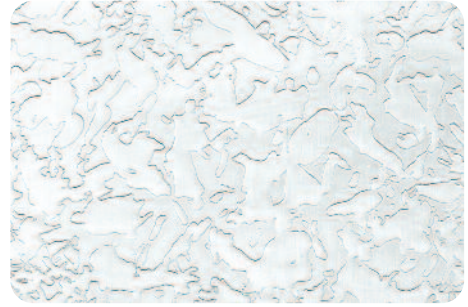
## Design Rolled Finishes



**AN5** - 0.6 mm thickness, 1250 mm max width



**AN6** - 0.6 mm thickness, 1250 mm max width



**DEC01** - 0.6 mm thickness, 1250 mm max width



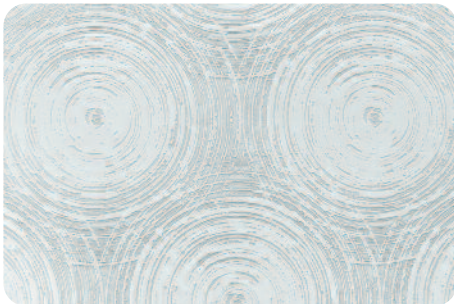
**DEC04** - 0.6 mm thickness, 1250 mm max width



**DEC06** - 0.6 mm thickness, 1250 mm max width



**DEC011** - 0.6 mm thickness, 1250 mm max width



**DEC015** - 0.6 mm thickness, 1250 mm max width



**HC5** - 1.2 mm thickness, 1250 mm max width



**1LTH** - 0.61 mm thickness, 1214 mm max width



**DEC017** - 1.2 mm thickness, 1250 mm max width

*Pattern and flat finish samples shown on this and other pages which are described are of stainless steel sheets kept in stock at Stainless Sections. All are 304 grade.*



*Bead Blast Finish in 1.2 mm thickness, 1219 mm max width*

**Pattern and deco finishes.** Patterns applied to 304 grade stainless steel sheets, which is either 2B, 2D2 brushed. These patterns allow for a wide variety of surface appearance to enhance the setting of the stainless steel panels.

These are available in thicknesses of 0.6 and 1.2 mm. Sheet size is most commonly 2438 x 1250 mm.

Applications are very wide ranging. Refer to applications list. These products can have colour added by the clear tinted powder coat process.

*The versatility of stainless steel is only limited by the designer's imagination.*



## **Stainless Sections Pty Ltd: Who We Are**

*Founded in 1993, with the end in view of supplying Australian architects with an extensive range of mirror, polished, patterned and other architectural quality stainless steel, Stainless Sections today is the largest supplier of stainless steel coil and sheet material not only to the Australian architectural and building products sectors but also to commercial, industrial and transport sectors. We supply stainless steel material not only in Australia, but also export product overseas.*

*From the start, our company's focus has been on the consistent supply of quality product. And, emphasis has never wavered from the timely supply of our material when promised. We take the view that it's all very well to have the best stainless steel coil and sheet in Australia, but if we are unable to supply when needed, there is not much point.*

*Our materials range from etching, mirror-finish and a combination of these, including linishing and brushing.*

*And, not only do we have the most extensive range of material in Australia, we also have a service level second to none. Due to the unwavering dedication of our staff, we have been able to grow to where we are today.*

*Our position in the market today is also a result of attention to detail. We make sure that our customers get what they expect and more. We have always aimed to make their relationship with us a fruitful and satisfying one from the first phone call to the receipt of product and beyond.*

## **Our Technical Services Department**

Stainless steel as shown in this brochure is an extremely versatile building product. And, with a wide range of grades, finishes, thicknesses and so on, the choice and the preparation of application specifications can seem quite daunting.

To assist you with your needs, our Technical Services Department is ready to help. We can not only provide samples to help you in your selection, we can help in the right choice of product for your specific requirements and help work out other details as may be required.

Call us now with any queries you may have, we're only happy to help.



**Stainless Sections Pty Ltd**

**39-43 Sammut Street**

**Smithfield NSW 2164**

**Ph: 02 9604 4555 Fax: 02 9757 2166**

**Email: [sales@stainlesssections.com.au](mailto:sales@stainlesssections.com.au)**

**[www.stainlesssections.com.au](http://www.stainlesssections.com.au)**