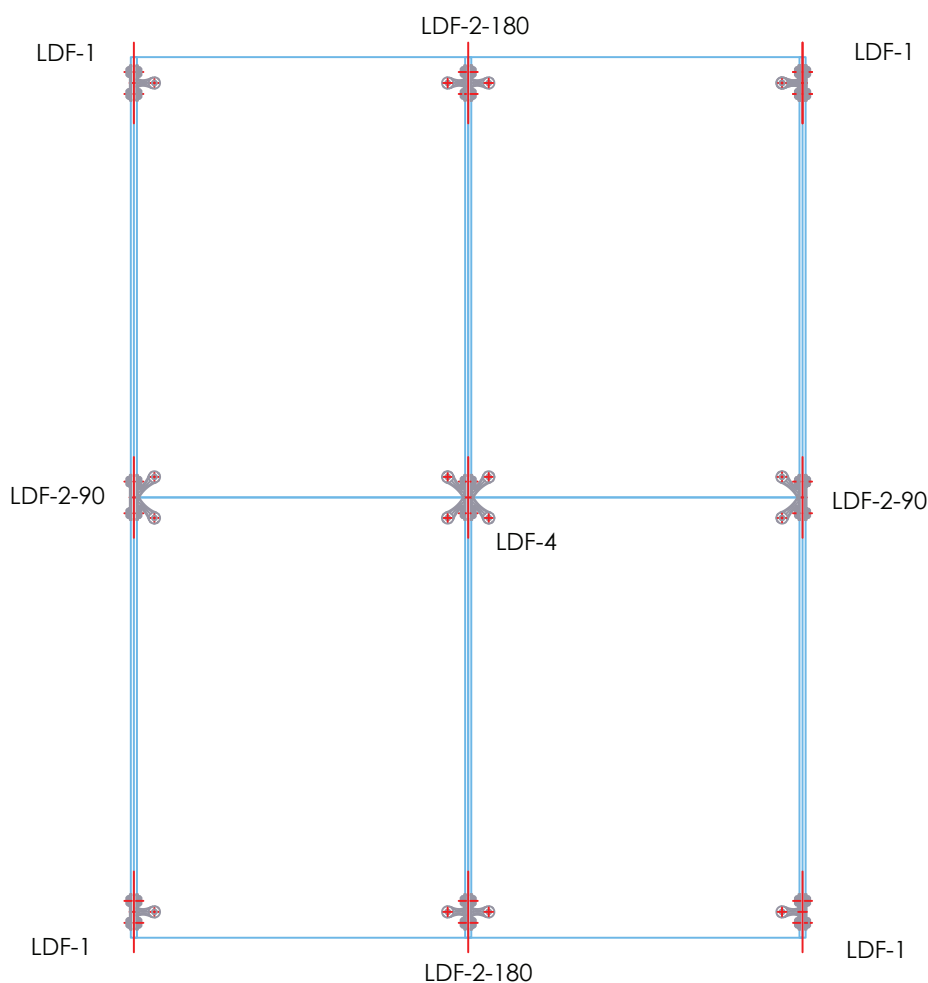


Light Duty Fin Fixed Range

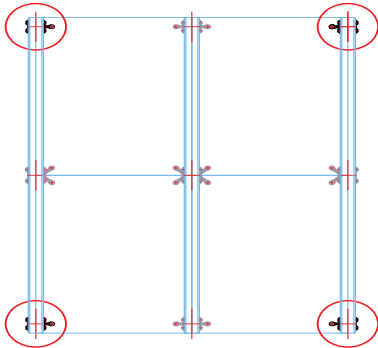
The Affix LDF Range of Spider Fittings are suitable for a variety of applications - most glass balustrading or barrier applications..

The LDF Range can also be used for other glass applications including facades, glass pool fencing or canopies.

Product	Page Numbers
LDF-1	H26&27
LDF-2-90	H28&29
LDF-2-180	H30&31
LDF-4	H32&33

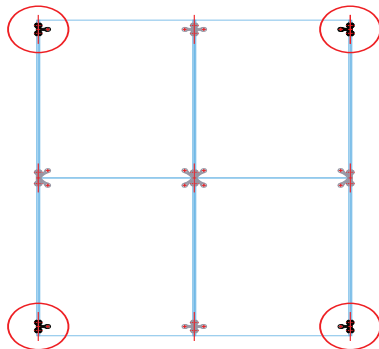


LDF-1 Range



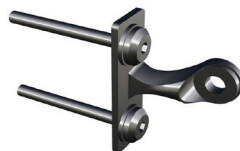
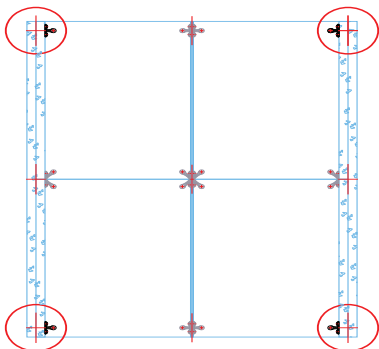
1 ARM SUIT RHS/SHS BOX SECTIONS - NO THREAD LDF-1-N

- Designed for BOLT THROUGH applications in beams and mullions thicker than 15mm.
- Ideal for thin walled RHS/ SHS box sections.
- Suitable for steel supported glass facades, floors or overhead glazing.
- A4-70, M10 all thread can be supplied on request



1 ARM SUIT GLASS OR STEEL FIN MEMBER - THREAD LDF-1-10/12/15T

- Designed for SIDE FIXED - BOLT THROUGH applications in glass or steel fins 10,12 & 15mm
- Can be adapted to suit thicker structural fins request..
- A4-70, M10 all thread and isolating nylon bushing supplied as standard



1 ARM SUIT WALL SUBSTRATES - WALL FIX LDF-1-W

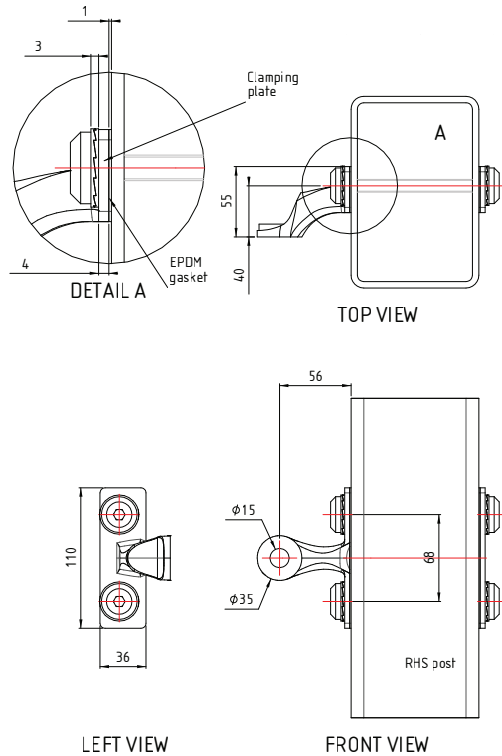
- Designed for SIDE FIXED - BOLT ON applications into supporting substrates.
- Suitable for concrete slabs, timber walls, drill and tapped steel sections
- A4-70, M10 x 100mm all thread supplied as standard. M10 timber lag screw and cut to length all thread can be supplied on request

See following page for technical drawing

LDF-1 Range



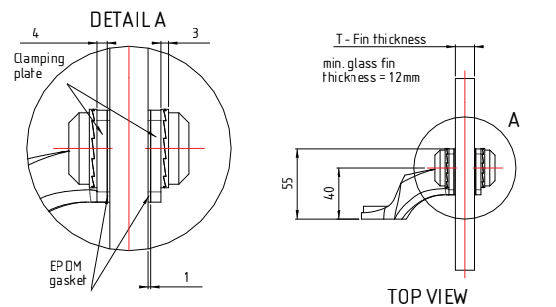
LDF-1-N Variant



Handing convention: As viewed from building exterior

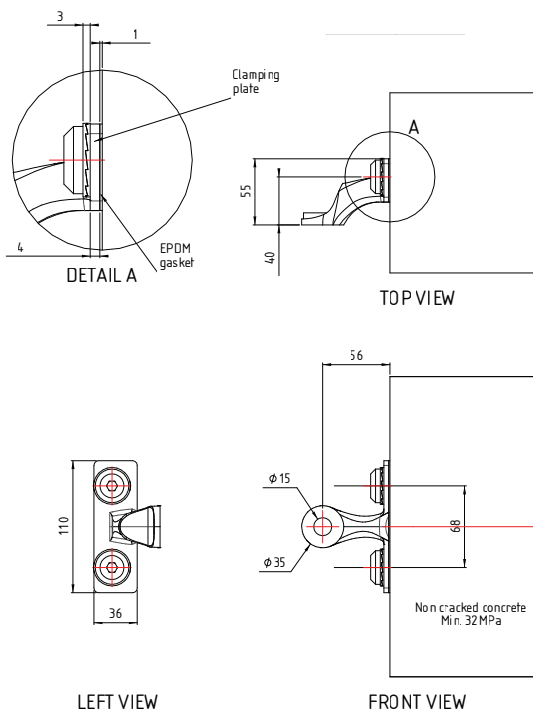
Rod length required =
<substrate thickness> +20 +/- 2

LDF-1-T Variant



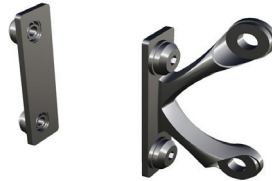
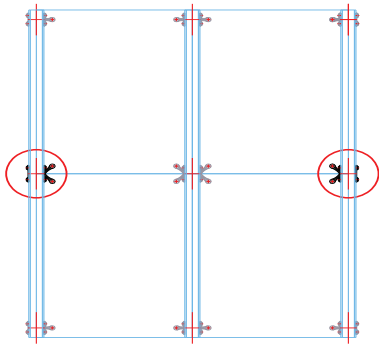
Handing convention: As viewed from building exterior

LDF-1-W Variant



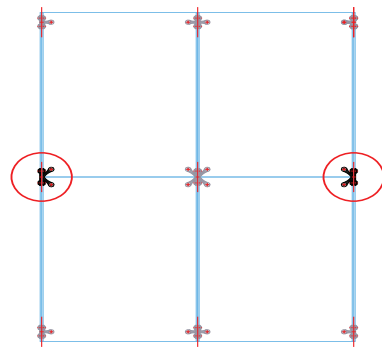
Handing convention: As viewed from building exterior

LDF-2-90 Range



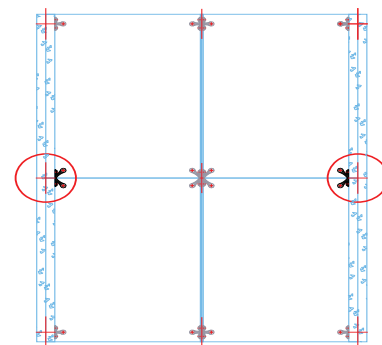
2 ARM 90° SUIT RHS/SHS BOX SECTIONS - NO THREAD LDF-2-90-N

- Designed for BOLT THROUGH applications in beams and mullions thicker than 15mm.
- Ideal for thin walled RHS/ SHS box sections.
- Suitable for steel supported glass facades, floors or overhead glazing.
- A4-70, M10 all thread can be supplied on request



2 ARM 90° SUIT GLASS OR STEEL FIN MEMBER - THREAD LDF-2-90-10/12/15T

- Designed for SIDE FIXED - BOLT THROUGH applications in glass or steel fins 10,12 & 15mm
- Can be adapted to suit thicker structural fins request..
- A4-70, M10 all thread and isolating nylon bushing supplied as standard



2 ARM 90° SUIT WALL SUBSTRATES - WALL FIX LDF-2-90-W

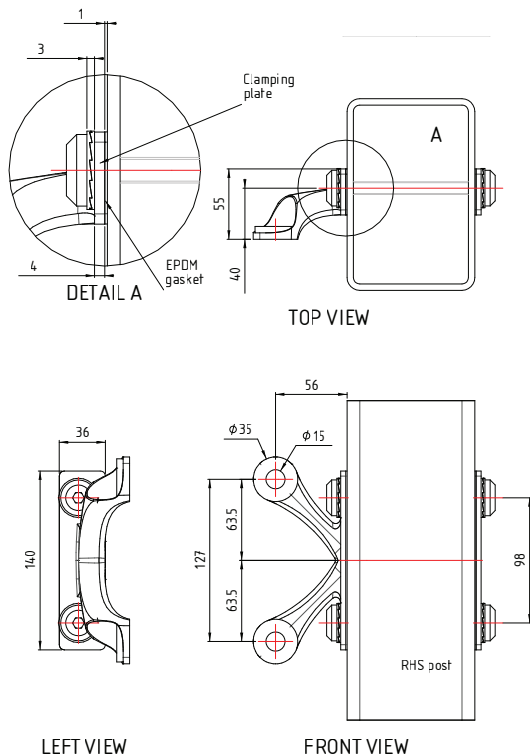
- Designed for SIDE FIXED - BOLT ON applications into supporting substrates.
- Suitable for concrete slabs, timber walls, drill and tapped steel sections
- A4-70, M10 x 100mm all thread supplied as standard. M10 timber lag screw and cut to length all thread can be supplied on request

See following page for technical drawing

LDF-2-90 Range



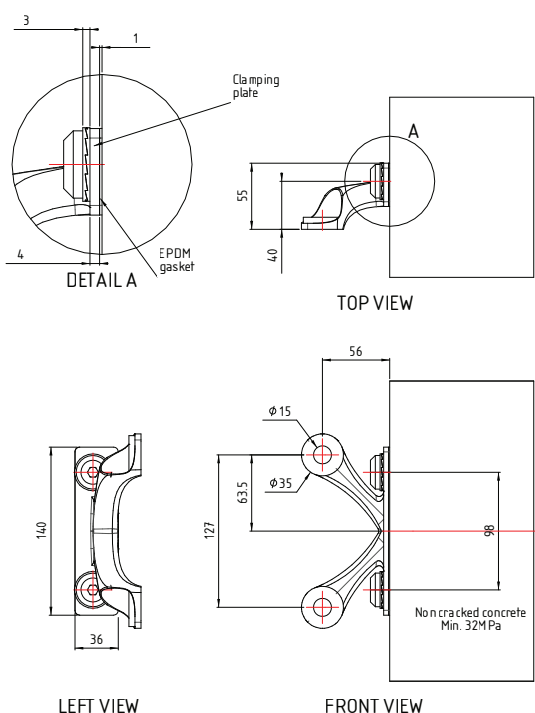
LDF-2-90-N Variant



Handing convention: As viewed from building exterior

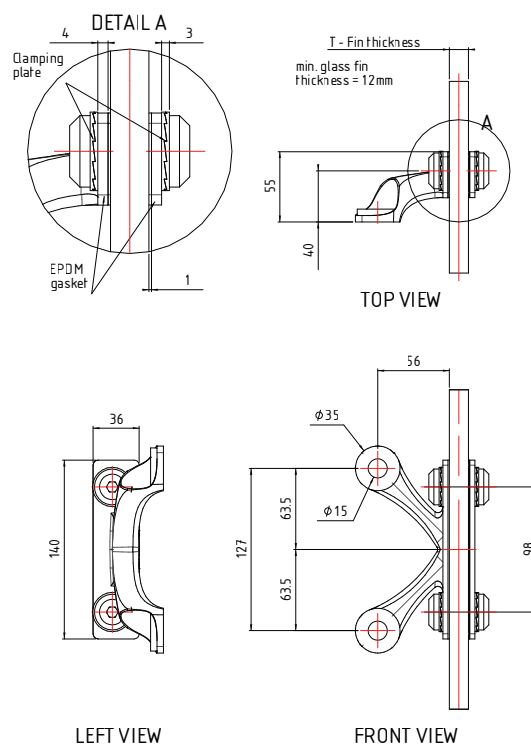
Rod length required =
<substrate thickness> +20 +/- 2

LDF-2-90-W Variant



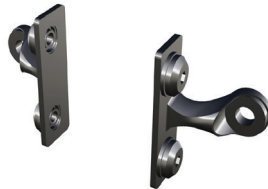
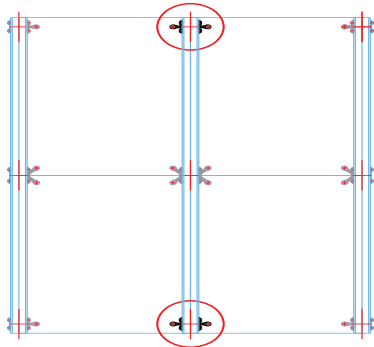
Handing convention: As viewed from building exterior

LDF-2-90-T Variant



Handing convention: As viewed from building exterior

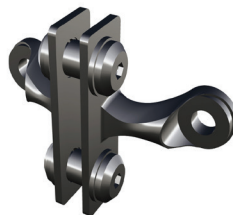
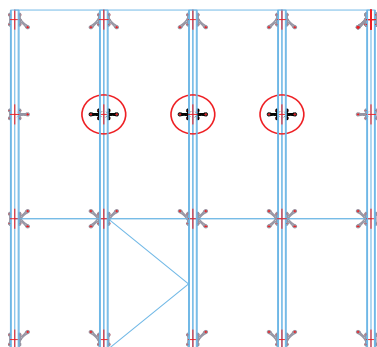
LDF-2-180-N



2 ARM 180° SUIT RHS/SHS BOX SECTIONS - NO THREAD LDF-2-180-N

- Designed for BOLT THROUGH applications in beams and mullions thicker than 15mm.
- Ideal for thin walled RHS/ SHS box sections.
- Suitable for steel supported glass facades, floors or overhead glazing.
- A4-70, M10 all thread can be supplied on request

LDF-2-180-T

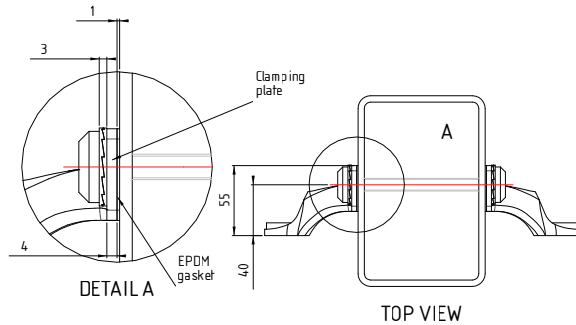


2 ARM 180° SUIT GLASS OR STEEL FIN MEMBER - THREAD LDF-2-180-10/12/15T

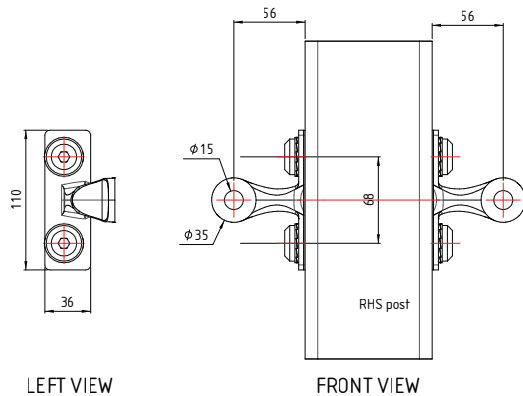
- Designed for SIDE FIXED - BOLT THROUGH applications in glass or steel fins 10,12 & 15mm
- Can be adapted to suit thicker structural fins request..
- A4-70, M10 all thread and isolating nylon bushing supplied as standard

See following page for technical drawing

LDF-2-180-N



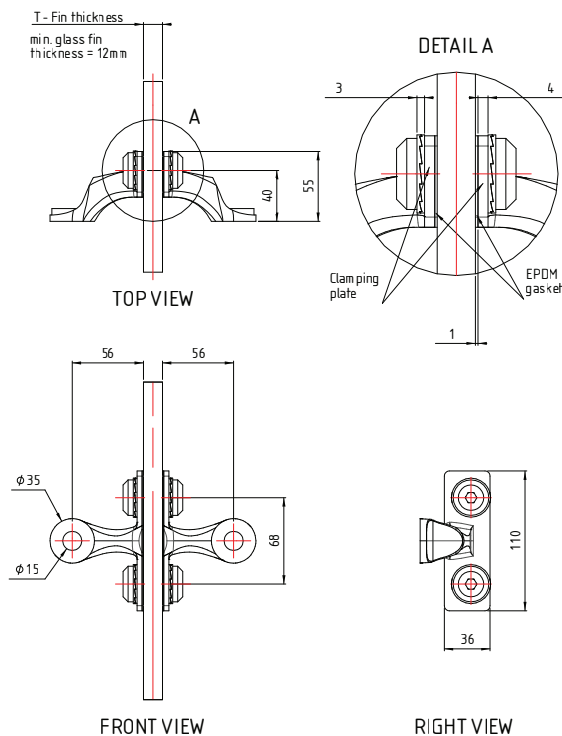
Rod length required =
<substrate thickness> +20 +/- 2



Handing convention: As viewed from building exterior

LDF-2-180-N Variant

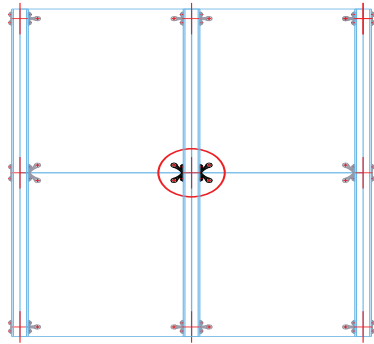
LDF-2-180-T



Handing convention: As viewed from building exterior

LDF-2-180-T Variant

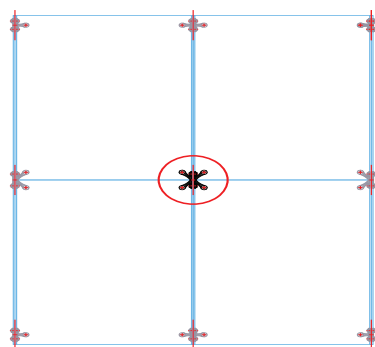
LDF-4-N



4 ARM SUIT RHS/SHS BOX SECTIONS - NO THREAD LDF-4-N

- Designed for BOLT THROUGH applications in beams and mullions thicker than 15mm.
- Ideal for thin walled RHS/ SHS box sections.
- Suitable for steel supported glass facades, floors or overhead glazing.
- A4-70, M10 all thread can be supplied on request

LDF-4-T

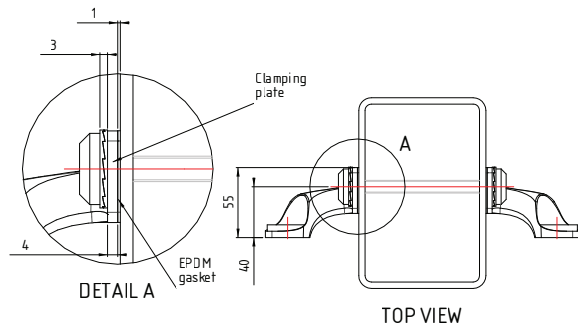


4 ARM SUIT GLASS OR STEEL FIN MEMBER - THREAD LDF-4-10/12/15T

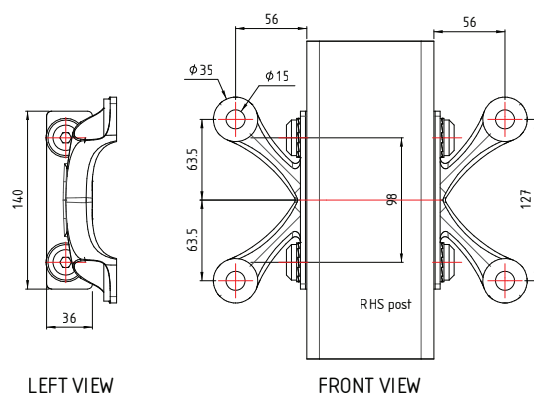
- Designed for SIDE FIXED - BOLT THROUGH applications in glass or steel fins 10,12 & 15mm
- Can be adapted to suit thicker structural fins request..
- A4-70, M10 all thread and isolating nylon bushing supplied as standard

See following page for technical drawing

LDF-4-N



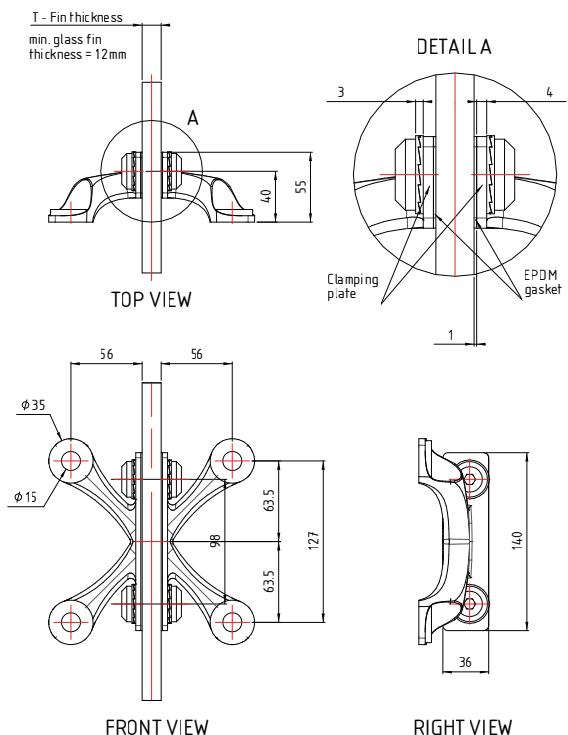
Rod length required =
<substrate thickness> +20 +/- 2



LDF-4-N Variant

Handing convention: As viewed from building exterior

LDF-4-T



LDF-4-T Variant

Handing convention: As viewed from building exterior