

TECHNICAL INFORMATION



vitroART

CUSTOM GRAPHIC CLADDING / DEVELOPED BY FAIRVIEW



FAIRVIEW

DEFINING ARCHITECTURE SINCE 1963

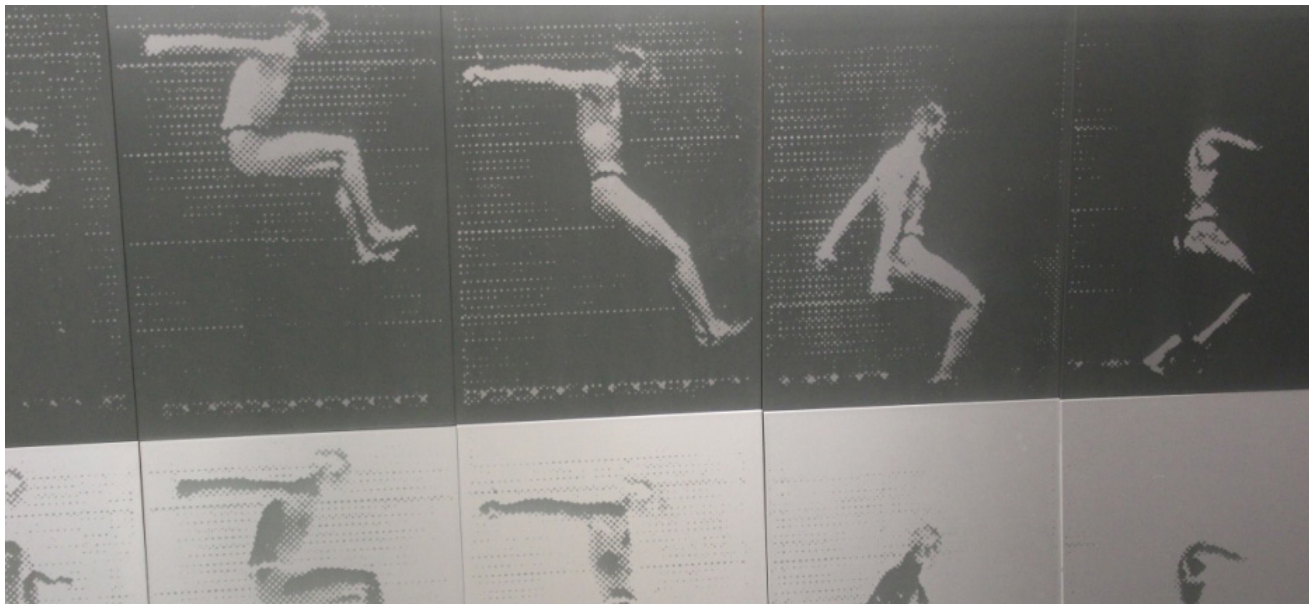
WWW.FV.COM.AU

ABOUT



vitraART

CUSTOM GRAPHIC CLADDING / DEVELOPED BY FAIRVIEW



ABOUT VITRAART

Developed by Fairview; VitraART is a comprehensive custom graphic cladding that can bring your ideas to life with individualised large scale décor print concepts. With a wide range of formats and options available, you can give your building projects their own character with a unique design.

Whether you are looking for a repeat design across individual panels or printed across multiple panels, we have the expertise to recreate your designs. With low MOQ's (30m²) the process can be applied to a small feature wall or an entire facade.

VitraArt can be applied on both of our popular composite panels: Vitracore G2 (deemed non-combustible) and Vitrabond. Our UV Resistant satin-clear fluoropolymer finish is designed for external use and comes with a 10 year warranty and optional graffiti resistance. The panels are also supplied with a protective film that helps prevent damage to the decorative surface when machining and installing.

KEY BENEFITS

- SHORT LEAD TIME
- SUPPLIED WITH A PROTECTIVE FILM
- SUITABLE FOR REPEAT IMAGES OR MULTI-PART DESIGN
- AVAILABLE ON EITHER VITRABOND OR VITRACORE G2
- SUITABLE FOR EXTERNAL USE WITH 10 YR WARRANTY
- UV RESISTANT FINISH
- LOW MINIMUM QUANTITIES (30M²)
- OPTIONAL GRAFFITI RESISTANCE

SUITABLE FOR USE WHERE NON-COMBUSTIBLE MATERIALS ARE REQUIRED

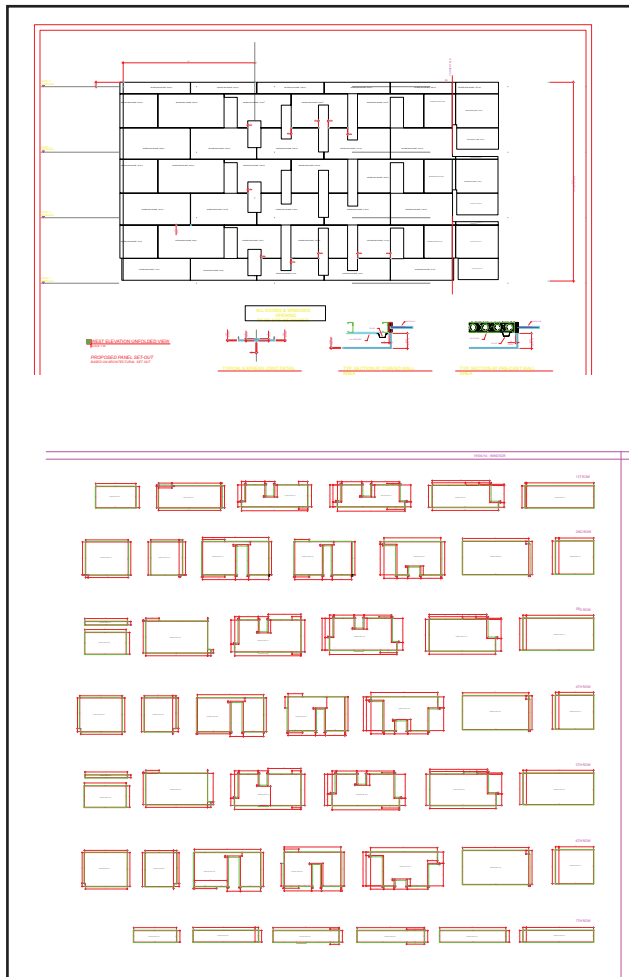


FILE REQUIREMENTS

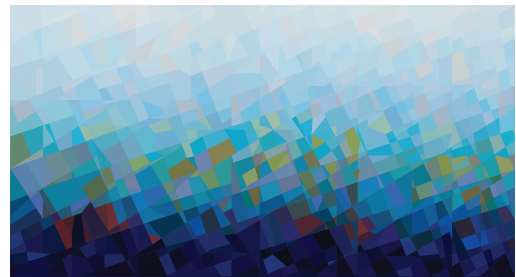
In order for Fairview to produce the VitraArt design, the following files are required:

- CAD files of the individual panels (drawn from face)
- CAD file of panel layout on building, including joint allowance
- A high resolution graphic file supplied without window or door openings etc.

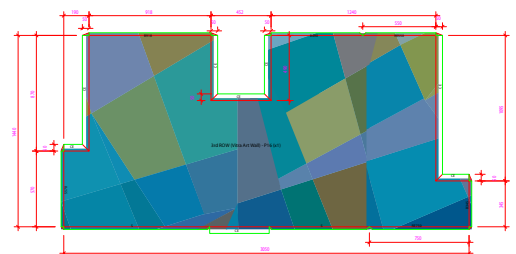
Further details on these file types are supplied on the following pages. Please note that the client will be provided with individual artwork files for approval prior to starting the VitraArt production.



Example of CAD drawing supplied by customer as a .dwg file at 100%.
Top shows the entire wall allowing for doors and windows.



Example of Vector art supplied by customer to cover the entire wall.



Example of art approval supplied to customer.

PRINT QUALITY

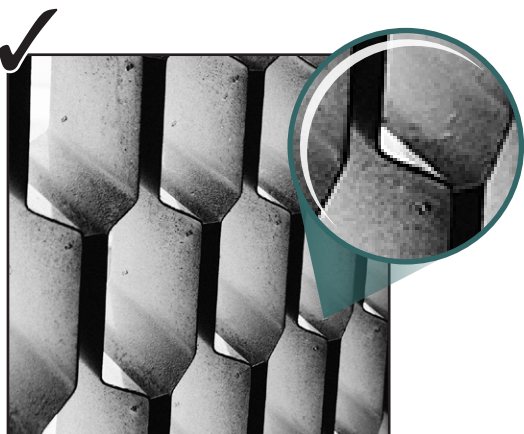
Recommendations

- The quality of your VitraART project depends on the quality of your print data
- Please do not send us any unfinished working versions, only data that is ready for printing
- Vector EPS files must be editable in Adobe Illustrator (vector files are not subject to pixelation & will remain sharp at any size)
- Any art supplied as JPEG or photo files need to be of extremely high quality (these files will be subject to pixelation when enlarged)
- Fonts must be outlined or supplied with the artwork.
- Graphic file is supplied as one complete file, not broken up across elevations or including door and window openings.



VECTOR ILLUSTRATION FILES

Vector graphics are files created in graphic design programs such as Adobe Illustrator. Vector's are similar to CAD drawings in the fact that they use points to create shapes. Vector graphics can be blown up to any size without losing image quality. These file types are highly recommended for enlarging on larger projects.



HIGH-RES JPEG OR PHOTO FILES

A high resolution image is one that is professionally taken by a photographer or purchased from a stock image company. These files will continue to lower their resolution the more you increase the size. Pixelation can be visible on extremely large structures but not so noticeable on smaller buildings when viewed from street level. Pixelation can also be used as a design feature.



LOW-RES JPEG OR PHOTO FILES

Low resolution files are NOT recommended for reproducing on large structures. These file types are usually found on the internet and are created small deliberately so that they load quickly on a screen. Although they look good on a screen they are no good for print production.

PLEASE NOTE:

If you are unsure about the quality of your graphic please feel free to contact our team with any queries: helpdesk@tv.com.au / 1800 007 175



vitraART

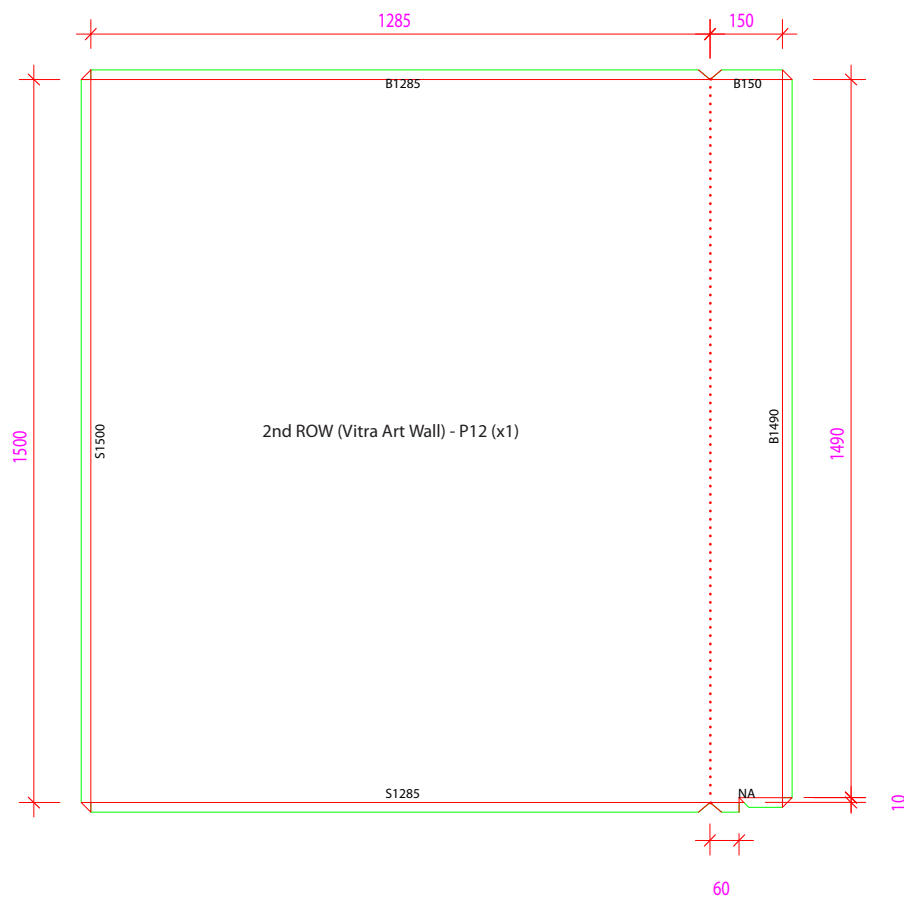
CUSTOM GRAPHIC CLADDING / DEVELOPED BY FAIRVIEW

PANEL REQUIREMENTS

- Panels should not have grooves across the printed area. They can be applied on site once the printing process is complete.
- Perimeter grooves for cassette panels are okay however these must be left flat.
- The maximum panel size is 3000 x 1600mm.

Please note:

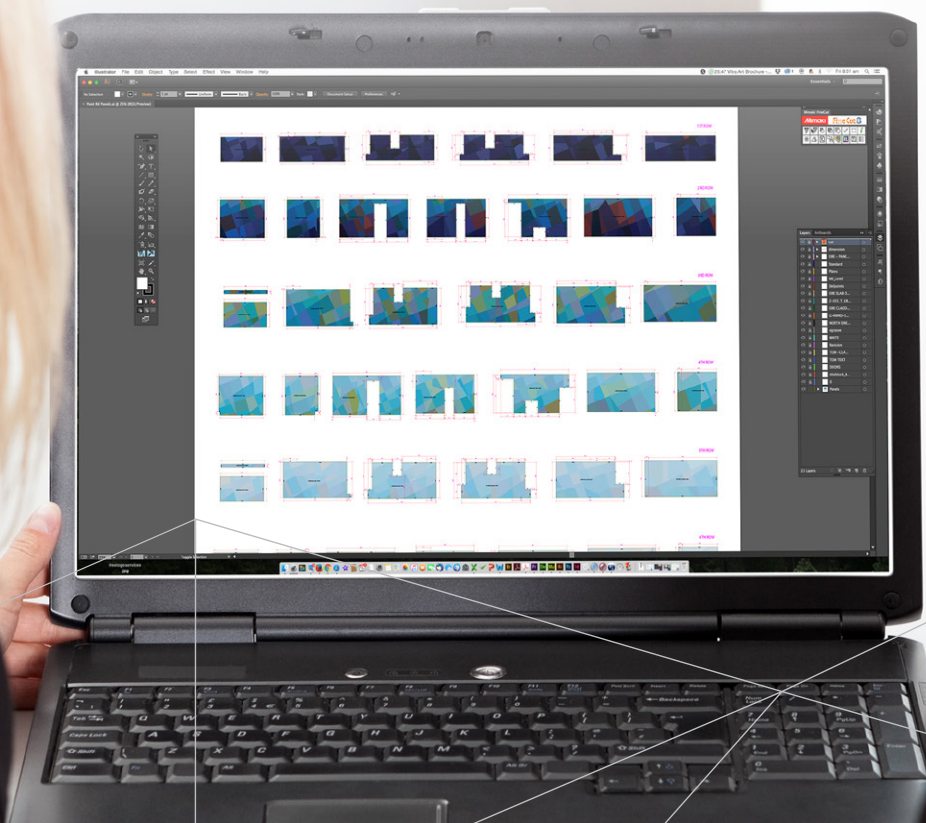
- Artwork can be applied to full sheets prior to machining
- Slight deviations may occur in the size accuracy (1-2mm) per metre, depending on production.



Panel showing perimeter grooves. Groove across printed area to be completed after the VitraArt process is applied.

CHECKLIST

GRAPHIC FILE	Your file is editable from an Adobe CC program (ideally Illustrator CC) and includes a PDF for visual reference.	
	There are no openings such as doors/windows.	
	All files have been created using CS5.5 (or earlier) and Pantone Solid Coated colours; or CS6 using Pantone + Solid Coated colours.	
	Your final print size is 120dpi.	
	Your fonts are outlined in the artwork or have been supplied to us in Mac format.	
	Your data is already rotated in the required orientation in the image processing program, not converted to a higher resolution.	
	All data has been compressed without loss (eg, TIFF with LZW).	
	In addition to the dimensions needed by you, a 5-10mm bleed has been included as per Fairview's requirements.	
CAD FILE	You have supplied CAD files of individual panels drawn from the face.	
	You have supplied a CAD file of wall layout showing individual panels.	





vitra ART

CUSTOM GRAPHIC CLADDING / DEVELOPED BY FAIRVIEW

FAIRVIEW PRODUCT RANGE:



vitranamel

VITREOUS ENAMEL PANEL / MANUFACTURED BY FAIRVIEW



ceramapanel

COMPRESSED FIBRE CEMENT FACADE / MANUFACTURED BY FAIRVIEW



vitrabond

ALUMINIUM COMPOSITE PANEL / MANUFACTURED BY FAIRVIEW



vitracore

ALUMINIUM HONEYCOMB CORE / MANUFACTURED BY FAIRVIEW



vitradual

NON-COMBUSTIBLE CASSETTE CLADDING / MANUFACTURED BY FAIRVIEW



HIGH PRESSURE LAMINATE / SUPPLIED BY FAIRVIEW



INSULATED SANDWICH PANEL / SUPPLIED BY FAIRVIEW



NON-COMBUSTIBLE FACADE PANEL / SUPPLIED BY FAIRVIEW



TERRACOTTA FACADE TILES / SUPPLIED BY FAIRVIEW



HIGH DENSITY FIBRE CEMENT / SUPPLIED BY FAIRVIEW



FAIRVIEW

DEFINING ARCHITECTURE SINCE 1963

AUSTRALASIA

P / +61 2 6352 2355

helpdesk@fv.com.au

NORTH AMERICA

P / +1 860 242 2711

helpdesk.na@fairviewarch.com

UNITED KINGDOM

P / +01278 428 245

helpdesk.uk@fairviewarch.com



WWW.FV.COM.AU