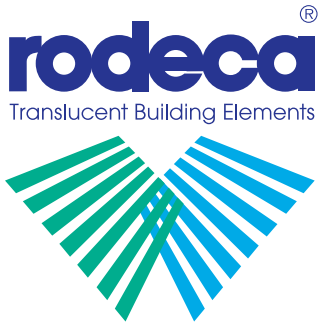


 **U-Panels**
U-Paneele



U-Panels



U-Panels



Multi Wall Sheets
Hohlkammerscheiben



Translucent Building Elements
Lichtbauelemente

U-Panels

Advantages

- quick and easy installation
- translucent
- heat-insulating
- high temperature resistance
- versatile designing in shape, colour and function
- good long term performance through UV protection
- 200 times tougher than glass
- shatter proof

Applications

- Flat and curved roof lights
- Ventilation
- Facades
- Sports and industrial facilities
- Roofing construction
- Carports
- Canopies
- Refurbishment for wall and roof

General information U-Panels

Rodeca U-Panels are manufactured with a UV coextruded layer to both sides of the panel (except PC 2600-40-7-U). This creates a system that is both reversible and versatile for varying applications using the fastener and glazing bar components available. Both polycarbonate and aluminium glazing bars can be coloured to suit the panels if required. Panel widths vary between 600 and 630mm with thicknesses of 10mm, 16mm, 20mm and 40mm. Rodeca intends to use these panels mainly for roofing constructions but of course some of these panels can be used for façade applications as well.

List of content

Overview manufacturing program U-Panels	page 2
Roofing system PC 2600-40-7-U	page 3
PC 2600-10-4-U for facades	page 4

All installation advice, application requirements and further technical information can be viewed in our technical manuals and installation manuals.






 Multi Function Panels
Multi-Funktions-Paneele

 RT-Thermolight
RT-Thermolight

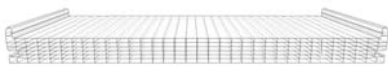
 Windows
Fenster

 Do it yourself
Do it yourself

Overview manufacturing program U-Panels

Rodeca U-Panels can be used with following system accessories.

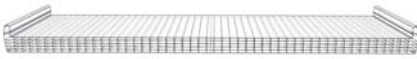
PC 2600-40-7-U



Colours
Standard: crystal / opal
Colour version from 400 m²
Duocolor version from 550 m²

Thickness (mm)	40
Building width (mm)	605 (+1/-1%)
Weight (kg/m ²)	approx. 4,6

PC 2630-20-6-U



Colours
Standard: crystal / opal
Colour version from 400 m²

Thickness (mm)	20
Building width (mm)	630 (+1/-1%)
Weight (kg/m ²)	approx. 3,4

PC 2630-16-6-U



Colours
Standard: crystal / opal
Colour version from 400 m²

Thickness (mm)	16
Building width (mm)	630 (+1/-1%)
Weight (kg/m ²)	approx. 3,2

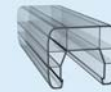
PC 2600-10-4-U



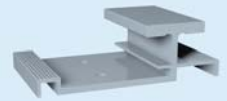
Colours
Standard: crystal / opal
Color version from 400 m²

Thickness (mm)	10
Building width (mm)	600 (+1/-1%)
Weight (kg/m ²)	approx. 2,3

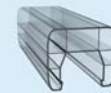
Polycarbonate panels



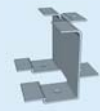
PC glazing bar
Art.No.: 380061



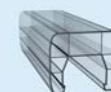
Fastener
Art.No.: 49404000



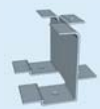
PC glazing bar
Art.No.: 380061



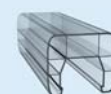
Fastener
Art.No.: 494020N



PC glazing bar
Art.No.: 380061



Fastener
Art.No.: 494016N



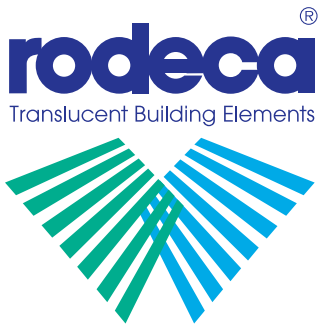
PC glazing bar
Art.No.: 380061



Aluminium
glazing bar
Art.No.: 521033



Fastener
Art.No.: 59401001



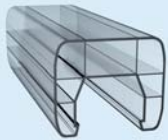
U-Panels

Multi Wall Sheets
Hohlkammerscheiben

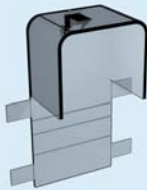
Translucent Building Elements
Lichtbauelemente

U-Panels

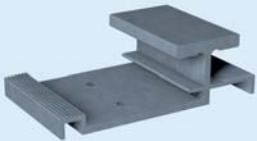
Accessories



Polycarbonate glazing bar
Item no.: 380061



Polycarbonate end cap
Item no.: 395008



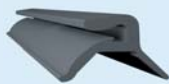
Fastener
Item no.: 49404000



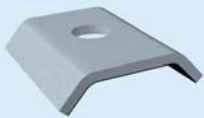
Drip profile
Item no.: 464011



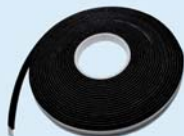
Side profile
Item no.: 420040 with front plate
Item no.: 492001



Gasket for 420040
Item no.: 902901 TPE grey



Retention washer
Item no.: 494002



Sealing band 30*5
Item no.: 9019020005



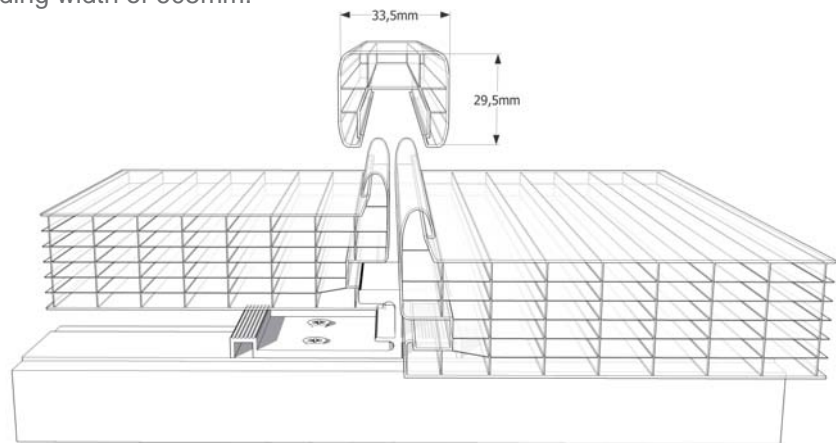
Wall connection profile
Item no.: 470400 with
gasket Item no.: 902106



Fill piece
Item no.: 59803425565

U-Panel PC 2600-40-7-U*

The U-Panel PC 2600-40-7-U is a 40mm thick panel with 7 layers and a building width of 605mm.

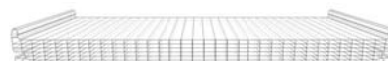


pitched application
- min. 5° pitch



curved application
- min. radius 10m

Glazing



PC 2600-40-7-U

Thickness (mm)	40
Building width (mm)	605 (+1/-1%)
Weight (kg/m ²)	approx. 4.60

*only one side coextrusion






 Multi Function Panels
Multi-Funktions-Paneele

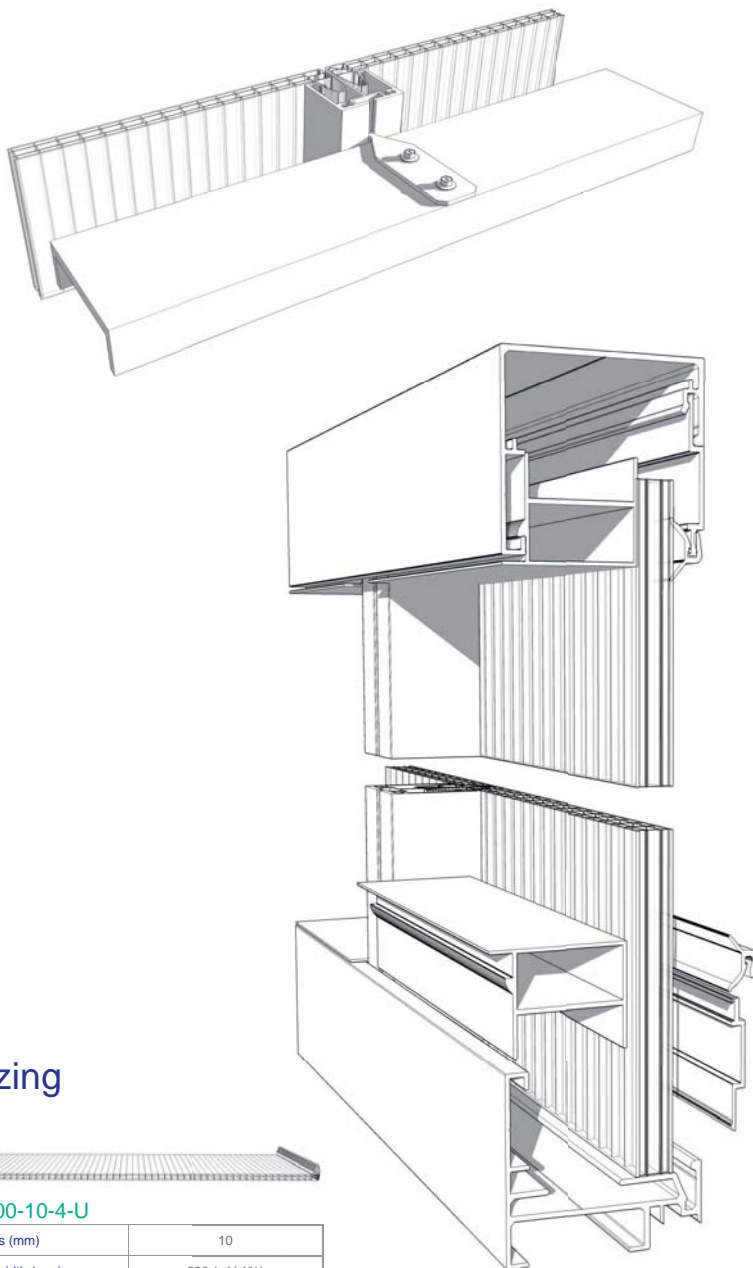
 RT-Thermolight
RT-Thermolight

 Windows
Fenster

 Do it yourself
Do it yourself

U-Panel PC 2600-10-4-U

The U-Panel PC 2600-10-4-U is a 10mm thick panel with 4 layers and a building width of 600mm. With the described system accessories this panel can be used additionally for walling applications.



Glazing



PC 2600-10-4-U

Thickness (mm)	10
Building width (mm)	600 (+1/-1%)
Weight (kg/m ²)	approx. 2.3

Accessories



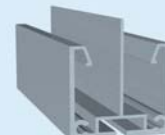
Top and side profile
Item no.: 420040 with clamp batten
Item no.: 492001



Base profile
Item no.: 420031 with clamp batten
Item no.: 492001



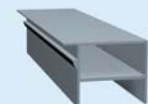
Gasket for 420040
Item no.: 902901 TPE grey



Glazing bar
Item no.: 521033



Fastener for glazing bar
Item no.: 594033



Polycarbonate fill piece
Item no.: 38109160



Sealing band 30*5
Item no.: 9019020005

RODECA GmbH
Freiherr-vom-Stein-Straße 165
D-45473 Mülheim an der Ruhr
Fon +49 (0) 208 76502-0 | Fax +49 (0) 208 76502-11
info@rodeca.de | www.rodeca.de



Germany

RODECA GmbH
Freiherr-vom-Stein-Straße 165
D-45473 Mülheim an der Ruhr
Fon +49 (0) 208 76502-0
Fax +49 (0) 208 76502-11
info@rodeca.de
www.rodeca.de

United Kingdom

RODECA Ltd.
Bentalls House
Bentalls
Pipps Hill Industrial Estate
Basildon
Essex SS14 3BS
Fon + 44 (0) 1268 531466
Fax + 44 (0) 1268 526351
sales@rodeca.co.uk
www.rodeca.co.uk

Italy

ANSA Termoplastici S.r.l./RODECA Italy
Concessionaria per l'Italia di RODECA GmbH
Via Nazionale, 66
24060 Sovere (BG)
Fon +39 035 981431
Fax +39 035 982714
info@rodeca.it
www.rodeca.it

The Netherlands

RODECA Systems b.v.
Koperweg 11 N
2401 LH Alphen aan den Rijn
Fon +31 (0) 172 416 747
Fax +31 (0) 172 419 090
info@rodeca.nl
www.rodeca.nl

Belgium and Luxembourg

RODECA Systems BELUX bvba
Wupstraat 37
2812 Muizen/Mechelen
Mobile +32 (0) 468 137 677
Fax (NL) +31 (0) 172 419 090 (RODECA Systems b.v.)
info@rodeca.be
www.rodeca.be

South America

REPLAEX RESINAS PLÁSTICAS EXTRUDADAS
LTDA
Autorizado America do Sul de RODECA GmbH
Estrada da Ligação, 839 - Taquara - Rio de Janeiro
RJ - BRASIL
cep. 22713-470
Fon : +55 (0) 21 2446-8811
Fax : +55 (0) 21 2446-7181
info@rodeca.com.br
www.rodeca.com.br
www.replaex.com.br

The RODECA product groups overview / Die RODECA Produktgruppen im Überblick:



Translucent Building Elements

Lichtbauelemente



Multi Wall Sheets

Hohlkammerscheiben



Multi Function Panels

Multi-Funktions-Paneele



U-Panels

U-Paneele



RT-Thermolight

RT-Thermolight



Windows

Fenster



Do it yourself

Do it yourself