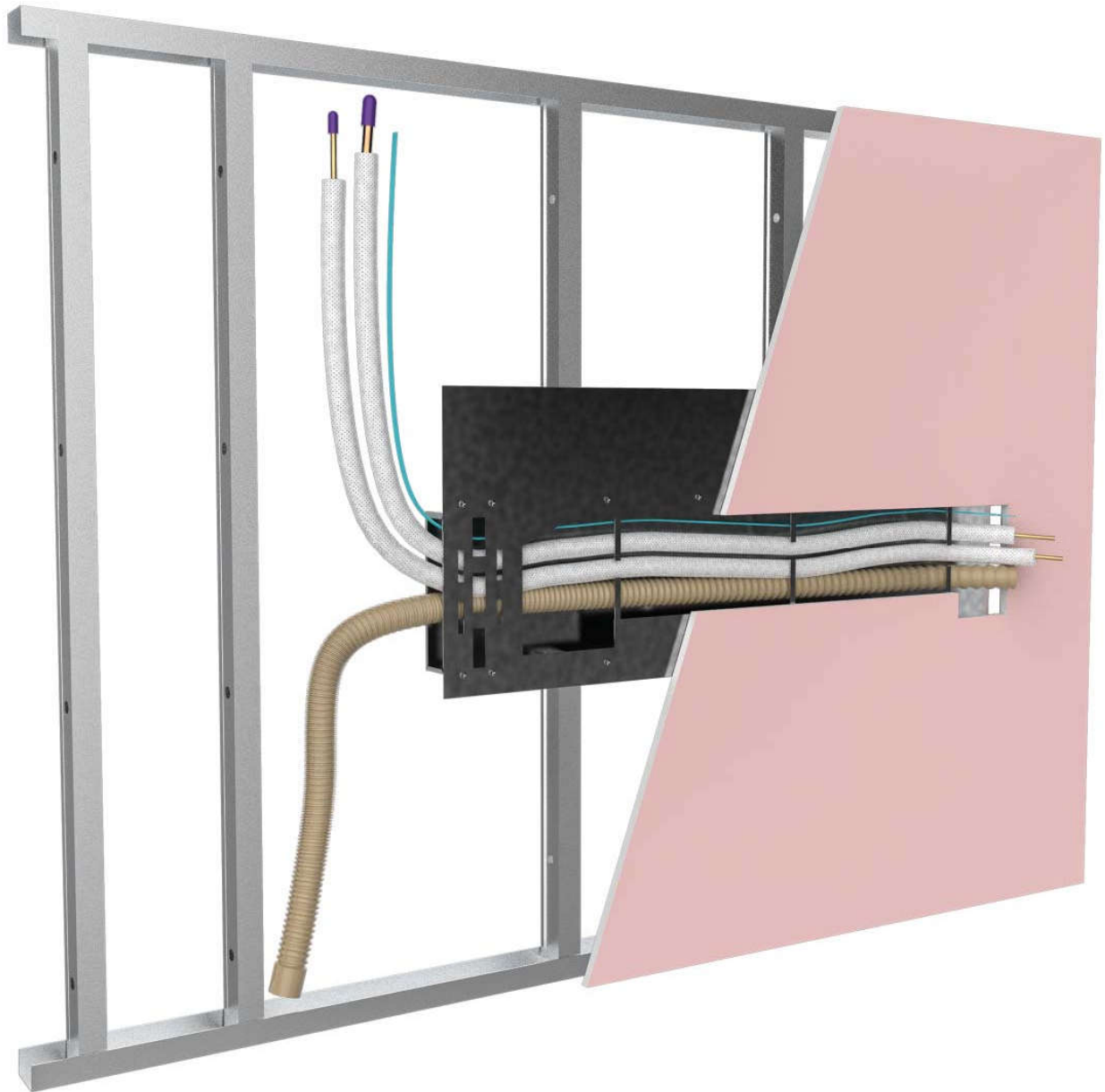


PROMASEAL® Split Ezy Installation Instructions



PROMASEAL® Split Ezy is an innovative fire protection solution for building general services of a split system air-conditioner installed within fire resistant compartmentation walls. The integrated product, comprised of a galvanised steel mounting bracket with intumescent penetration seal, has been fire tested to AS 1530: Part 4: 2014 for up to 120 minutes fire resistance in plasterboard partitions. It is available in a universal design that suits most brands of air-conditioner.

PROMASEAL® Split Ezy solves a number of problems with one simple solution for the convenience of installers. It protects the services that have been roughed in prior to installation of board linings. It provides a datum point for installation of the head unit, as well as a fixing bracket so there is no need for installer to search for any studs or use anchor bolts.

Essentially, the system features a fire resistant intumescent penetration seal thus no additional sealing of the services or patching of the wall linings is required.

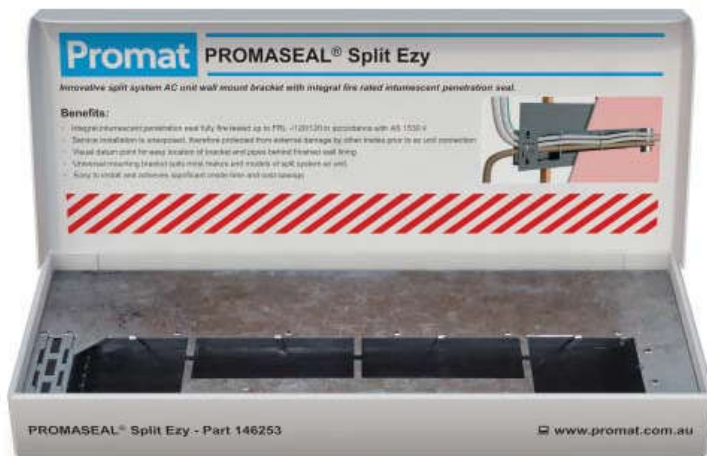
All of this means that significant savings in terms of time and cost against traditional methods can be achieved.

Installation method

- 1) Notch out studs to allow the fixing bracket to sit flush with the front of stud framework.
- 2) Screw the bracket to studs with self-tapping screws. Bend out datum spike and pipe protection tabs.
- 3) Cut the bracket and remove the fire collar. Thread fire collar onto the pipes.
- 4) Position both fire collar and pipes into the bracket. Ensure pipes are correct in length for fit off. Position drain at lowest point. Bend pipe protection tabs back to secure pipes. Thread cables through the bracket.
- 5) Install board over the bracket. Ensure datum spike penetrates the plaster sheet.
- 6) Use datum spike to locate the bracket. Cut out plasterboard and expose pipes to allow for fit off.
- 7) Pull pipes out of the wall and fix the air conditioner's hanging bracket to the PROMASEAL® Split Ezy with self-tapping screws.
- 8) Install the air conditioner as per manufacturer's instructions.

Fire resistance performance

PROMASEAL® Split Ezy has been tested to AS 1530: Part 4: 2014 in fire resistant plasterboard partitions and achieved FRL's of -/60/60 and -/120/120 in the partitions of equal or greater FRL. Minimum partition thickness is 118mm for -/60/60 system and 142mm for -/120/120.



PROMASEAL® Split Ezy is supplied in 890mm x 320mm x 60mm thick box kit.

Promat provides a wide range of systems for compartmentation, fire resistant air and cable ducts, structural steel protection, fire stopping and partitions. For assistance with any passive fire protection problems, contact the nearest Promat office.



Promat Australia Pty Ltd

T 1800 PROMAT (776 628) E mail@promat.com.au
 F (08) 8352 1014 (Head office) (02) 9630 0258 (New South Wales)
 1800 334 598 (Victoria / Queensland)

www.promat.com.au

© Promat Australia Pty Ltd / 2018-03