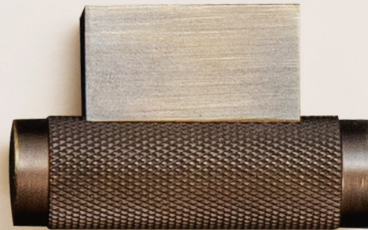


ISSUE3: JAN - MAR23

# momo

handles

QUARTERLY



**NEW SOLID  
BRASS RANGES**

In stock and  
available to order!

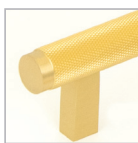
---



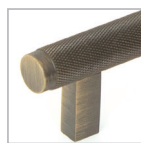


# Bellevue

A classic and stylish range including bar handles and a complementary knob with optional backplates available throughout the collection. Featuring a 5mm stepped end, square posts on the bar pulls and the option of a knurled or plain texture, make Bellevue a timeless design for all interior settings. The inclusion of a stunning appliance pull completes the set.



Brushed Satin Brass (BSB)



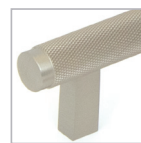
Dark Brushed Brass (DBB)



Bronze (BNZ)



Matt Black (MBL)



Dull Brushed Nickel (DBR)

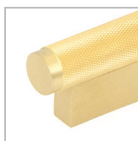
Description	Texture		Finish	Bar Pull Dimensions				Backplate	Backplate Dimensions			
	Plain	Knurled		∅	<>	∧	▶		∅	<>	∧	▶
Round Knob	BVKPL035	BVKN035	BSB, DBB, BNZ, MBL, DBR	-	35∅	35∅	36	BVPLBP035	-	35∅	35∅	3
160 <sub>mm</sub> Bar Pull	BVPPL160	BVPKN160	BSB, DBB, BNZ, MBL, DBR	160	200	14	36	BVPLBP160	160	200	16	3
320 <sub>mm</sub> Bar Pull	BVPPL320	BVPKN320	BSB, DBB, BNZ, MBL, DBR	320	370	14	36	BVPLBP320	320	370	16	3
Appliance Pull	BVAPPL416	BVAPKN416	BSB, DBB, BNZ, MBL, DBR	416	496	20	50	BVPLBP416	416	496	18	3



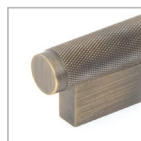


## Brighton

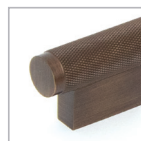
A re-imagined take on a classic, this range includes bar handles and a complimentary T-knob in an impressive knurled texture. Featuring a 5mm stepped end, and a solid base continuing the width of the handle, Brighton sets a commanding design for premium joinery.



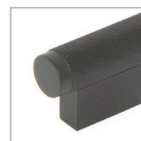
Brushed Satin Brass (BSB)



Dark Brushed Brass (DBB)



Bronze (BNZ)



Matt Black (MBL)



Dull Brushed Nickel (DBR)

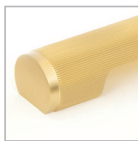
Description	Part no.	Finish	∅	< >	∧	↳
T Knob	BSPKN050	BSB, DBB, BNZ, MBL, DBR	-	50	16	31
160 <sub>mm</sub> Pull Handle	BSPKN160	BSB, DBB, BNZ, MBL, DBR	160	200	16	31
320 <sub>mm</sub> Pull Handle	BSPKN320	BSB, DBB, BNZ, MBL, DBR	320	360	16	31





## Manhattan & Sussex

An eye-catching piece enveloped in a luxurious, lined texture and featuring a 5mm stepped end. The handle section is hidden which preserves the elegant aesthetic of its striking cylindrical design. It can also be accompanied by the Sussex knob, a striking contemporary knob with a bold presence and lined texture, to allow for a diverse range of applications.



Brushed Satin Brass (BSB)



Dark Brushed Brass (DBB)



Bronze (BNZ)



Matt Black (MBL)



Dull Brushed Nickel (DBR)

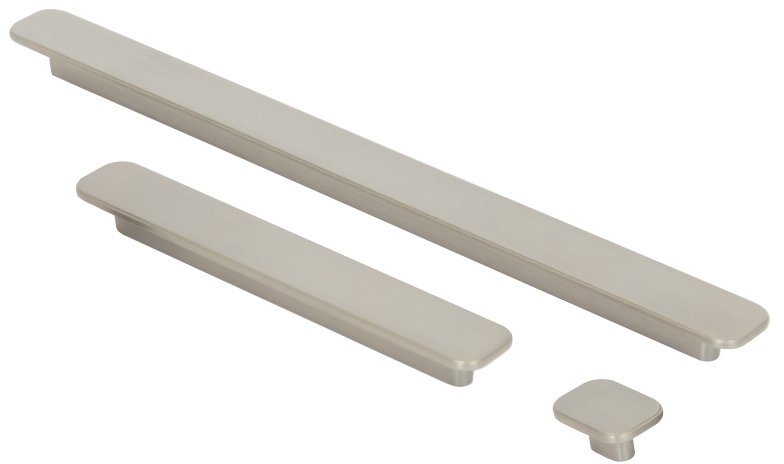
Description	Part no.	Finish	∅	<>	∧	↳
160 <sub>mm</sub> Pull Handle	MSPLN160	BSB, DBB, BNZ, MBL, DBR	160	200	30	25
320 <sub>mm</sub> Pull Handle	MSPLN320	BSB, DBB, BNZ, MBL, DBR	320	360	30	25
Sussex Knob	SRKLO35	BSB, DBB, BNZ, MBL, DBR	-	35∅	35∅	30





# Aspen

A truly classic design with an easy nature, it features a subtle stepped edge framing a distinct flat face that captures the light perfectly. Aspen has a gentle presence making it widely adaptable and has a contoured underside for a comfortable hold.



Brushed Satin Brass (BSB)



Dark Brushed Brass (DBB)



Bronze (BNZ)



Matt Black (MBL)



Dull Brushed Nickel (DBR)

Description	Part no.	Finish	⊙	< >	∧	↳
Knob	ASK040	BSB, DBB, BNZ, MBL, DBR	-	40	30	20
160 <sub>mm</sub> Pull Handle	ASPH160	BSB, DBB, BNZ, MBL, DBR	160	200	30	20
320 <sub>mm</sub> Pull Handle	ASPH320	BSB, DBB, BNZ, MBL, DBR	320	360	30	20





## Otto

With its distinct blend of contemporary and traditional styling, this is the perfect transitional trio for any door. A touch of urban influence gives this design a unique edge.



Matt Black  
(MBL)



Dull Brushed  
Nickel (DBR)



Satin Brass  
(SB)



Antique Brass  
(AB)

Description	Part no.	Finish	○ ○	< >	∧	↳
Square Knob	OSK028	MBL, DBR, SB, AB	-	28	-	24
Cup Pull	OCP096	MBL, DBR, SB, AB	96	113	25	21
D Handle	ODH160	MBL, DBR, SB, AB	160	175	15	29



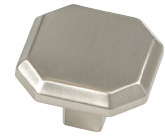
Imagery courtesy of HDR Interior Design and Laura Coleman Photography



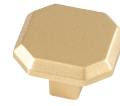


## Jago

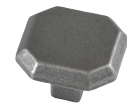
With soft undulating lines, this graceful handle will complement a large range of cabinetry styles and design schemes seamlessly



Brushed Nickel (BRN)



Satin Brass (SB)



Antique Pewter (AP)

Description	Part no.	Finish	o o	< >	^ v	↳
Knob	JSK032	SB, BRN, AP	-	32	32	23
D Handle	JDH160	SB, BRN, AP	160	175	15	32

## Caselle

With its distinct blend of contemporary and traditional styling, Caselle is the perfect collection for transitional cabinetry



Vintage Nickel (VN)



Matt Black (MBL)



Satin Brass (SB)

Description	Part no.	Finish	o o	< >	^ v	↳
Knob	CFK030	MBL, SB, VN	-	30ø	-	24
160 <sub>mm</sub> D Handle	CDH160	MBL, SB, VN	160	185	25	34
320 <sub>mm</sub> D Handle	CDH320	MBL, SB, VN	320	346	25	34

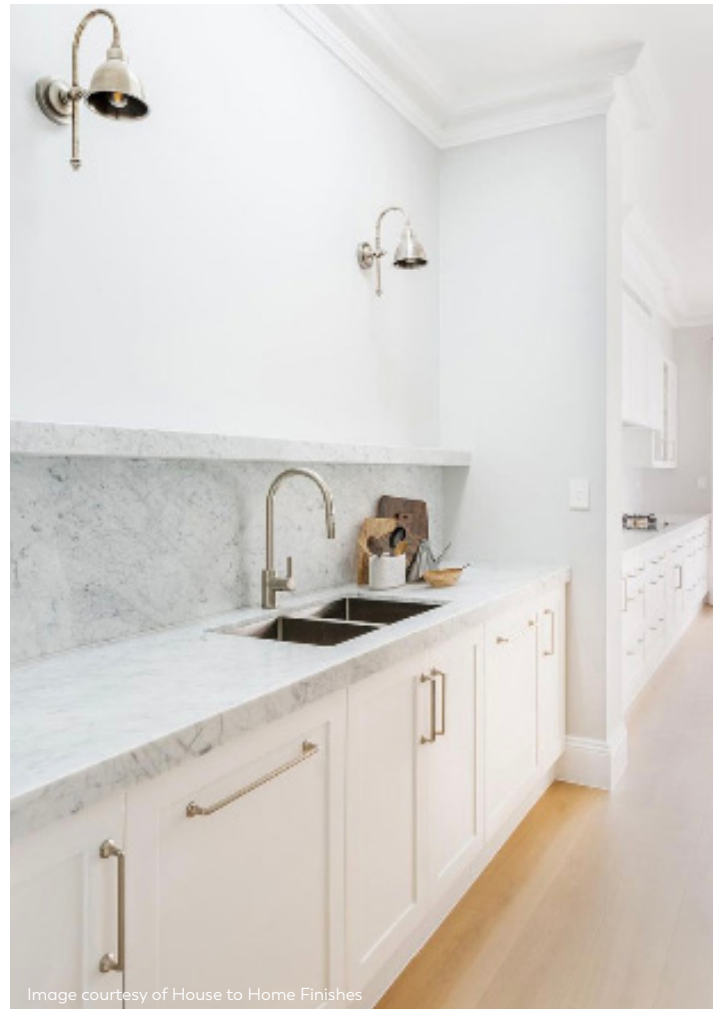


Image courtesy of House to Home Finishes



Available in an impressive 800mm length!



## SYDNEY

The exquisite new Sydney Pull Handle is a stunning handle crafted from the finest hardwoods and when used side by side forms a perfect elliptical shape. Available in 3 sizes and in raw and oiled options in American Oak, Blackbutt and Walnut timber.



Part no.	Finish	oo	<>	^ v	↳
SPH200	AORW, AOO, BBR, BBO, WNR, WNO	128	200	28	22
SPH400	AORW, AOO, BBR, BBO, WNR, WNO	256	400	28	22
SPH800	AORW, AOO, BBR, BBO, WNR, WNO	640	800	28	22