

# TurfPave® Installation Procedures



## Base Course Preparation 2

- Lay down and compact a non calcareous free draining washed sand (80% 0.1-1.0mm diameter) or 1-5mm diameter gravel aggregate. As a guide install: 100mm for pedestrian walkways; 150mm for passenger vehicles and 250mm for heavy vehicles.

## Turf Establishment 5

- Lay sprigs or rolled turf onto the sandy soil layer. Turfed areas should be protected from traffic except for emergency vehicles until the root system becomes established and anchored to the subgrade below the **TurfPave** cells.
- Use grass species that are hardy and suitable for local growing conditions. These include couch species, Kikuyu and Buffalo.

## Hydroseeding

- Apply grass seed and mulch over the soil filled cells. Poorly germinated areas should be re-seeded immediately.

## Growing Media 4

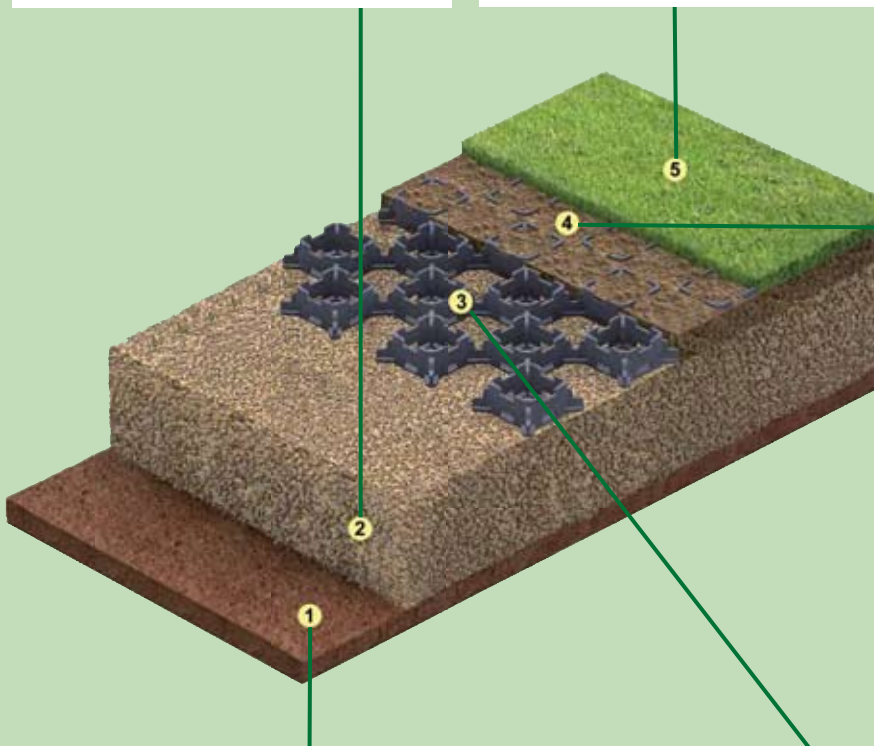
- Fill and cover the cells with an 80% sand and 20% organic sandy soil mix. Do not use clay or heavy loam soil mixes that can adversely affect turf establishment.
- Level off the surface and lightly compact the area using water sprayed evenly across the surface.
- The tops of the TurfPave cells must be covered with 5mm of the sandy soil mix if the area is to be turfed and by 15mm if the area is to be hydroseeded.
- Ensure that vehicles are not driven over newly installed TurfPave modules.

## Sub-grade Preparation 1

- If necessary, excavate and level the area where **TurfPave** is to be installed. The excavated depth will depend upon the amount of compacted sand or gravel to be installed to meet design load specifications. See guide recommendations under the section Base Course Preparation 2
- Compact the excavated or levelled areas using a mechanical plate compactor or light compaction roller.
- Sub-surface drainage and irrigation systems and utility lines should be installed in the sub-grade. Disturbed areas should be lightly compacted after installation.

## TurfPave Installation 3

- Place connected Turf Pave modules on the sand or gravel base course ensuring that the open cells are facing upwards.

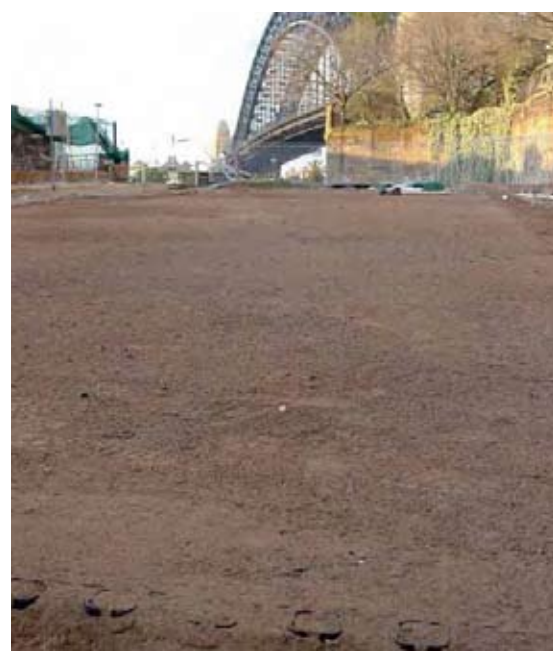


## Protection and Maintenance

- Seeded areas need to be protected from traffic, other than emergency vehicles, for a period of 6 to 8 weeks, or until the grass can tolerate traffic.
- Ensure regular watering, correct fertiliser applications and top soil dressings as needed.



**TurfPave** modules securely interlock, conform to uneven surfaces and are easy to install



**TurfPave** in-filled with a free draining 80% sand and 20% organic mix promotes vigorous turf growth



**TurfPave** provides efficient turf stabilization on overflow car parking and pedestrian walkway areas



### ELMICH AUSTRALIA PTY LTD

52/8 Avenue of Americas Newington NSW 2137 Australia

Tel: +61 2 9648 2073 Fax: +61 2 9648 4731

e-mail: [australia@elmich.com](mailto:australia@elmich.com)

web: [www.elmich.com.au](http://www.elmich.com.au)

Ref:TPI /707