



Tessellated™
TILE FACTORY



Tessellated Tile Factory 2023 Interior design trends

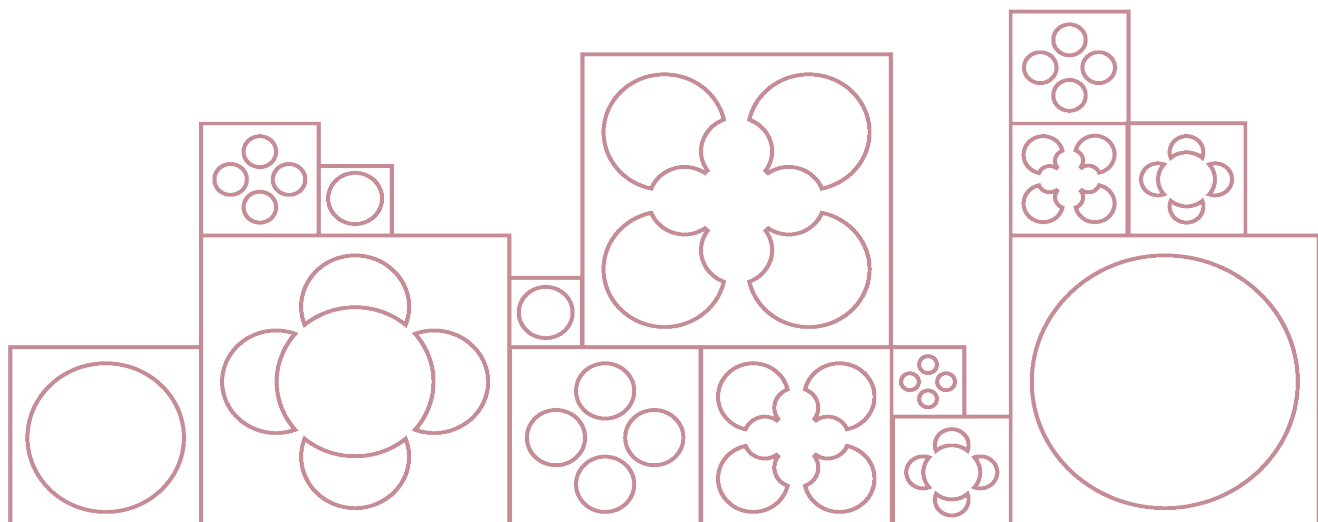
What's installed with TTF for 2023 Interior Design Trends

Tessellated Tile Factory (TTF) is keeping up with 2023 interior design trends and staying on top with what is in, and what is not. At TTF we have researched the on trend styles and designs for 2023 to bring you insight on how you can implement these interior design trends into your home or commercial spaces. From Vogue living, to multiple social media channels and interior design sites, they all have a common point of design for the New Year to come.

We are delighted to share this information and send you on a TTF journey and help you plan with home refurbishments/renovations or commercial projects. As you are aware interior trends consistently change and are either coming back in style or with new radical ideas. Colour is a key element in the design process where it can influence the whole design concept (view TTF 2023 colour trends). Followed by furnishings and fixtures that compliment your colour palette it can really amplify your surroundings and make use of your living space.

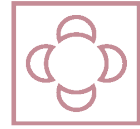
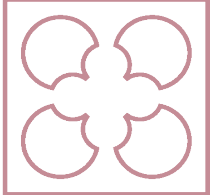
The aim is to find a perfect balance where the visual presence resonates with the viewer, this is the Goldilocks zone where all designers reach to achieve. To stay afloat with your design planning start with;

1. A style whether it is a classical design or modern contemporary knowing your style helps you in directing what kind of furnishings, fixtures and finishes to apply.



2. A Focal point in an interior space can have such an impact as the eye automatically centres and draws the viewers attention. It can be a piece of art, a fireplace, furnishings or floor design.

3. Balance is highly important, it requires to balance the visual weight of furniture and accents, to consider the scale, texture and eye level position.



Visual Space

Visual space can be manipulated by applying the right finish where light plays a part and colour can influence the mood. Presented in the image below is Hotel Indigo Adelaide lift design. The colour and accents added has a perfect balance, the focal point is the tessellated tile flooring that sets the style and theme of the hotel.



Project: Commercial hospitality 'Hotel Indigo Adelaide'
Product: Tessellated tile bespoke design.

Texture

Texture as an interior design trend seems to remain for 2023, where incorporating texture to walls, floors or ceilings adds depth and dimension to a room. Applying decorative interior products such as tiles can leave your audiences inspired, its knowing what focal point to decide on and what type of texture.

Working with the dimensions of your working space you can determine what focal point and type of appearance you want to create. TTF tile collection can deliver textured walls and floors depending on the required look or style. Mosaic porcelain or glass tiles can have a spectacular presence as the colour detail can bring warmth or vibrancy. The geometric designs porcelain mosaics can achieve are either simple or complex designs, creating a lavish texture. Additionally, our mosaic glass collection can also have a metallic finish where it reflects light making it brighter and more luminous. From our subway tile collection you have a choice of a craquelle finish or a matte texture that has a classic look or a modern feel when applied to walls. Alternatively our American subway tiles can be applied in a pattern that creates a modern texture such as a herringbone or a brick pattern that gives emphasis to art deco, New York subways. Floors as a focal point can set the scene to your interior or exterior space, adding our tessellated tile designs into your space you create a spectacular feature, a real show stopper.

Visual texture can influence a mood or ambience in a room, the following textures presented below can provide balance to your working space.

Glaze



Mosaic



Matte



Tessellated

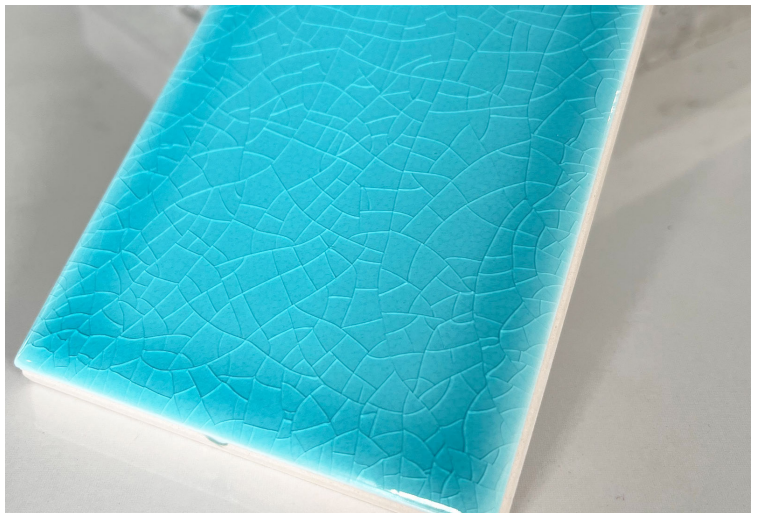


Craquelle



Pattern





Traditional Styles

Traditional styles are in for 2023! From federation styles to American subway art deco styles, they are your quintessential classics that present an era and are an excellent addition to interior and exterior spaces. Tessellated tile designs visually present a Victorian federation interior style with several type of patterns you are bound to bring tradition into your home or commercial space, the level of prestige and elegance tessellated tile design patterns have, are just simply remarkable. It is commonly applied to floors but can also be applied to walls to create a feature and are often added to commercial spaces as a way to identify a brand.

As many design trends return, art deco is here to stay for the new year. American subway tiles are the best rendition to this interior design trend as the notorious New York subway tiles are best applied to kitchen splashbacks and bathroom wall tiles, this tile solution is an affordable favourite. TTF has a wide range of subway tile decor colours from cool to warm tones there is a unique colour to fit your project. Inclusive to this are the diverse finishes available such as craquelle, glaze or matte that can either visually add more light, give a more modern look or to influence a particular period for your interior setting. So what we know is that traditions are back for 2023 interior designs and we can easily achieve this by adding certain furnishings, accents and fixtures to compliment the look and style for your commercial project or home.





Geometric Patterns

Geometric Patterns are known to consist of lines, shapes and angles, in 2023 this interior design trend seems to be a winner. There are so many different type of geometric patterns that you can apply into your home or commercial space, ultimately its the type of look you want to achieve. What we know when applying this interior trend is that they are either angular or have smooth arches, from circles to triangles and hexagons these all connect to create a strong pattern.

Application of geometric patterns are often positioned as flooring to create a bold statement dependent on the type of design chosen, TTF collection has a wide range of different patterns that can be applied to floors or walls. One of our main collection that have over 50 geometric pattern designs is from our tessellated tile collection, they all have a unique design from traditional classical looks to modern contemporary styles. From our Mosaic porcelain range available in squares and hexagons it can create geometric patterns that are either simple and elegant to bold complex geometric designs that leave audiences in awe. Additionally, from our decorative tile collection we have a range of tile designs that create stunning patterns, that result in incredible interior designs.

To apply geometric patterns into your interior space there has to be a perfect balance especially when adding furnishings and fixtures, certain geometric patterns can result from a certain era either from the art deco period, to your mid century or contemporary times.





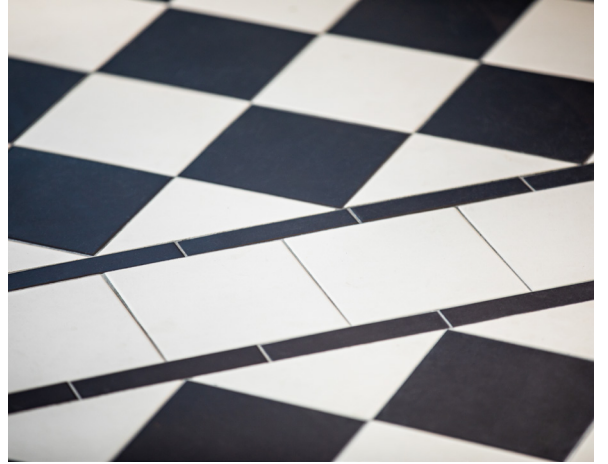
Individualism

A display of individualism is always about creating an identity a foot print as you will. In this case a visual recognition of who you are or what brand you may be. From choosing the right decorative product, the right colour and the right furnishings and fixtures will determine the type of expression you want to be recognised for. Often as such individualism can be interpreted as minimalism where less is more and perhaps a more eclectic approach can be achieved when applying this method.

Showcased are tessellated tile designs in the most simplest designs that creates a unique and stunning look. Checkered designs are a versatile pattern design as the black on white squared pattern creates a sense of individualism a classical look and feel. However this look can be modernised if applied with contemporary furnishings and fixtures. This is also evident in octagon and dot pattern designs that also has a sense of individualism. This pattern design is commonly applied to flooring either internally or to the exterior such as verands or patios, visually this pattern design is a statement piece whether it is applied to you bathroom or kitchen floors.

Additionally the most simplest tile applications can be American subway tiles when applied in brick format, the clean lines and white aspect has a sense of minimalism and individualism.





European

European interior design has many influences from the corners of Tuscany to mid century England, France and Spain. The culture behind each style design has an element that is unique and can be visually present from flooring, furnishings, accents and fixtures which all compliment each other, giving emphasis to a particular region.

Interior designs from the Victorian period are known to have wooden carved furnishings, lacework, mouldings and embellished ceilings. An alternative way to emphasis this period is to add tessellated tile designs as a flooring application, where visually you connect with this period. Showcased are interior designs that highlight Italian and Spanish decorative tiles. The tile designs and patterns have a rendition of Italian and Spanish 19th century cement tiles known as 'cementine' the geometric patterns and designs creates a stunning feature to a room, where you can bring Europe into you Australian home. TTF has a wide collection of decorative tiles that have European designs, setting the scene in your interior living spaces. Decorative tiles can achieve a classical traditional look or a modern contemporary design depending on the additions that you apply into your interior space.



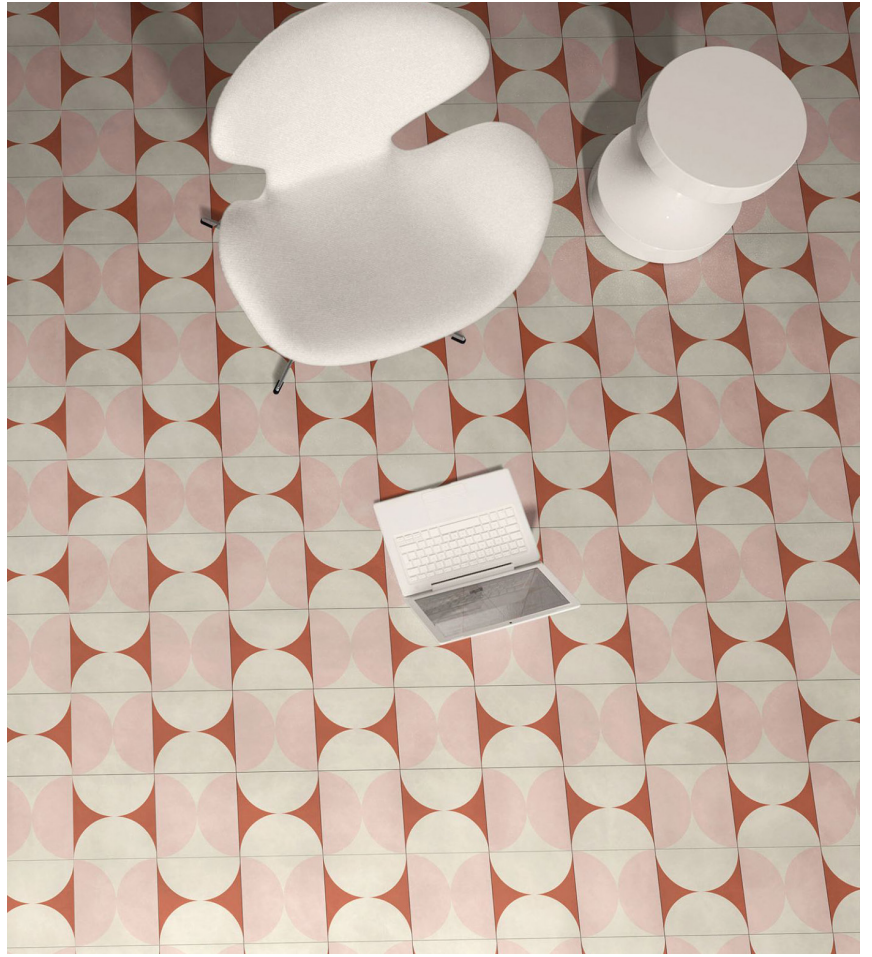
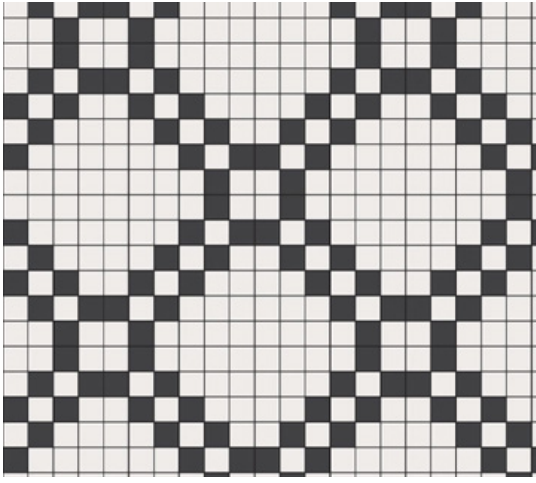


Curved

Curves are in for 2023! As are shapes however there seems to be an emphasis on arches and curves incorporated into interior designs this new year. Retro designs are commonly associated with curves and circles like lava lamps, curved furniture and other arched accents. Depending on the application you can implement arches and circles into your interior design.

Tessellated Tile Factory has a wide range of tile solutions that can present curves into your living space. From our mosaic porcelains we can form designs that resemble arches, or our encaustic tiles where designs can have circular patterns and curves to fit your design concept. Adding tessellated tiles or mosaics to flooring or wall applications can create a feature to the room. From our decorative tile collection we have a range of curved and arch designs that can deliver a stunning presence to an interior space. In all curved trends can suit all forms of interior styles and present an emotional connectivity, it all depends on how you style it.





White Kitchens

White kitchens remains a favourite for 2023, where the white on white is coming back. Kitchen design is one of the most important rooms in a home, as for most part of the day we revisit this point of the house multiple times. Designing for your kitchen there are many aspects to consider from your floors, walls and ceilings they all have to connect and balance visually. Whites can come in different colour tones such as cream, ivory, eggshell and vanilla. Choosing the right cabinetry is key as it dominates the design of the kitchen area, which is why a splashback has to visually balance with the cabinetry selected. Splashbacks can be either the feature of the kitchen setting and needs to be sustainable and easy to maintain especially in a kitchen environment. Showcased are subway tiles that are applied as splashbacks applying white subway tiles creates clean lines and a classic look for the kitchen, a trend that transcends.

TTF American subway tiles, craquelle Victorian subway tiles and Subway tile range have diverse white colours in either a glaze, craquelle or matte finish. All 'subway' tiles perform exactly as is required for the kitchen area and aesthetically presents the right look. Alternatively, if white is not the look you seek for in 2023 there are a wide range of different colours to fit your kitchen design.







Tessellated™
TILE FACTORY

T. 02 8964 3430

A. 151-153 Parramatta Road, Annandale NSW 2038

W. www.ttfactory.com.au