

**LETTER TO MANUFACTURERS & CONTRACTORS: USES FOR 'abilox®' OXIDE COLOURANTS**

Dear Professional

## **'abilox®' MINERAL OXIDE COLOURS FOR MANUFACTURED MATERIALS & PRODUCTS**

Australian Oxides Pty Ltd has traded as Ability Building Chemicals Co for the last 20 years and is an independent innovative 100% Australian owned and operated manufacturing company.

Ability provides many unique specialty construction and manufacturing raw materials and specialises in the formulating, blending, milling and processing of colourant pigment powders for colouring manufactured products and materials.

Perhaps one of the best known is their range of non-fading, environmentally friendly and non-toxic mineral oxide powder pigments called 'abilox®'.

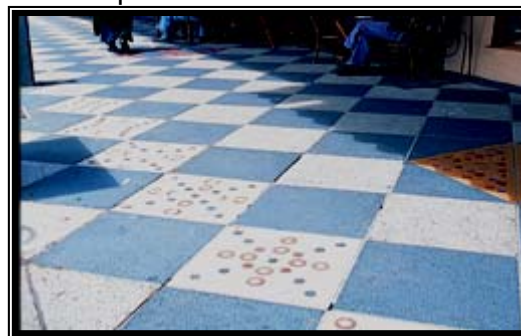
'abilox®' UV resistant colourants are permanent, high colouring strength pigments suitable for use in producing white and natural looking 'ochre', 'earthy', muted 'autumn' colouration for many industrial materials and products produced locally and overseas - especially for those subjected in service to harsh Australian weathering and global areas which suffer from severe UV ray and aggressive exterior exposure conditions.

After years of constant research, we are pleased to announce we've progressed a little further by increasing the 'abilox®' range of colourants to one of the broadest on the world market (we now offer 48 individual colouring oxide pigments) as well as focusing on unsurpassed pigment quality criteria now incorporated for our customers who want the very best in ease of use, batch to batch uniformity,

colourfastness, performance reliability and cost effectiveness.

This extensive line of 48 distinctive, highly popular colours is your assurance of pure, strong, completely uniform, free-flowing and easy-to-disperse (easier mixing in a mixer of suitable intensity and power to fully develop the maximum intensity and uniformity of colour in less time) dry powder pigments complying with and exceeding relevant Australian and International Standards, yet often affording **you** a saving in costs compared with imported pigments.

The 'abilox®' brand of ultra-fine, inorganic pigments provide superb opacity ('hiding' or covering power), 100% tinting (or colouring) strength and durability. All have outstanding light, chemical, abrasion, wear and weathering resistance. Many feature delightful colouring hues such as Cobalt Blue and a gorgeous range of greens, high temperature resistance and EED – extra easy dispersion – which saves users money for the reduced energy required for the operation of mixing/dispersing machinery and time spent in obtaining a uniformly coloured product.



All 'abilox®' colours are prime quality pigments – including the white – 'abilox®' Illumin-ite White oxide. They are perfect for virtually all types of absolutely UV resistant colouration of many of the products of industry. Materials such as coloured paper, water-based (aqueous) paints and inks, adhesives, caulks and sealants as well as for linoleum and vinyl flooring, some types of rubber, low temperature processed plastics and in certain cases for baked clay and other high temperature kiln fired products.

**All 'abilox®' powder pigments are most suitable for 'through' coloured grades of asphalt – especially if bound with Shell Bitumen's product called 'Mexphalte C' – an alternative, transparent synthetic bitumen binder for conventional black bitumen in asphalt, all grades and classes of 'through' coloured premixed concrete, all concrete products, brick, block and erosion control masonry, cement mortars used for trowel applied rendering of walls and particularly for permanently coloured cast-in-place concrete pavements - including the surface colouring 'dust-on' 'shake' as well as the preferred, highly durable, integral 'through-colouring' methods.**

For pre-mixed concrete suppliers, 'abilox®' oxide colouring pigments are supplied in convenient to use degradable sacks. They also wash out quickly

and easily from pre-mixed concrete transit truck barrels.


Printed information and prices for the 'abilox®' product range of 48 individual colourants are available by contacting our Sales Department or myself. Knowledgeable recommendations for their *successful application and use* for 'through' (integral) colouration of virtually *any* binder used to bind composite products including plaster, lime, cement, bitumen, rubbers and drying oils/polymers/resins for the manufacture of for example of genuine linoleum flooring and surface coatings is given freely without charge.

All 'abilox®' pigments are highly suitable for permanently colouring machine-made concrete products such as roofing tiles, bench tops and any other composite product. They *may be specified by architects, landscape architects, building designers, consulting civil engineers and other specifiers for any of the abovementioned materials accordingly.*

You may contact us for free printed 'how-to-do-it' information, a colour card swatch brochure, 'biscuits' (small disks of coloured concrete made with 'abilox®' colourants in biscuit or 'cookie' moulds) and if required, actual powder pigment samples. Please ask for **me** personally - **PETER GRAY**.

**Hoping to hear from you soon.**

Yours faithfully



Peter Gray  
**MANAGER**



**PS: 'abilox®' COLOURING PIGMENTS FOR CEMENT BOUND MATERIALS:**

*For specifiers, manufacturers, tradespeople and builders a white APP (Ability Presentation Pack) ring binder folder containing product/material recipes and much valuable and helpful printed information about 'abilox®', Ability's other specialised building products and recommended trade practises and processes. All are available free of charge upon request.*

*An APP also contains a colour card swatch brochure showing the approximate colouring results that may be obtained by using 'abilox®' colouring pigments in Portland cement-bound concrete, mortar and long-life cementitious (containing cement) paints etc used for architectural, landscape architectural, civil engineering, residential and heritage building preservation use. This pack crammed with information should serve your business as an excellent resource - particularly as a colour reference resource to assist you and your clients in selecting colours for virtually all composite products – including in situ concrete, pre-cast concrete, concrete masonry, pavers, flagstones and roofing tiles.*

*As mentioned above, a complete range of coloured concrete sample 'biscuits' are also available on request. Each biscuit, which is a disc of coloured concrete made in a biscuit ('cookie') mould, indicates the colouring effect of a particular 'abilox®' pigment at a particular dose rate in both grey and off-white cements. 'Biscuits' assist in colour selection for cement bound materials and products intended to be coloured with a particular 'abilox®' pigment for a particular building project.*