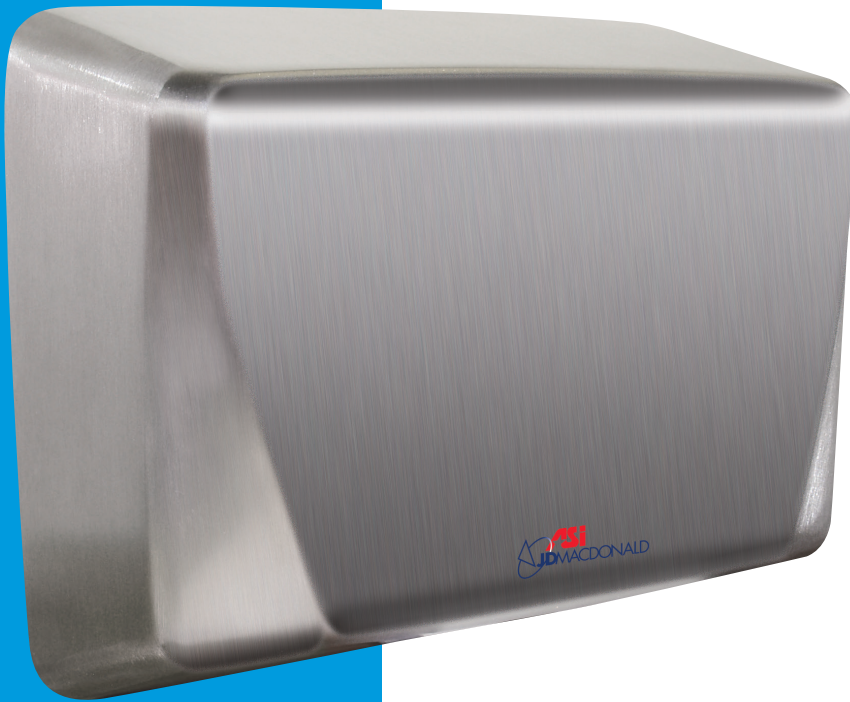




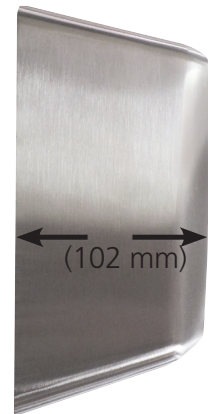
Model # 10-0199-2-00 White
Model # 10-0199-2-93 Satin Stainless Steel

TURBO-SLIM™

Compact High-Speed Automatic Hand Dryer



10-0199-2-93 Satin Stainless Steel



www.GreenSpec.com

That's right. It's high speed and compact – without the need for an extra recess kit. At only 102 mm deep, this ASI JD MacDonald high-speed hand dryer can fit in most confined spaces.



10-0199-2-00 White

- Quick drying — less than 15 seconds
- Operates automatically using infrared sensor
- Auto-resetting thermostat
- Owner-adjustable air speed and air temperature
- On/off heating options
- Dryer automatically shuts off after time-out when user removes hands from sensor zone
- Comes in white or satin stainless steel.
- 5 year warranty

Free Call 1800 023 441
www.asijdmacdonald.com.au



SPECIFICATIONS

Surface Mounted High-Speed Hand Dryer shall operate automatically from IR sensor activated by beam reflection from objects placed in sensing zone. Motor and heating element shall have internal resetting automatic thermal protection. Unit shall develop 60 CFM (102 m³/h) of heated air and shall provide drying time of less than 15 seconds. Cover shall be heavy-duty, one piece formed 18 gauge stainless steel bright or satin finished on all exposed surfaces (by option specified) or heavy-duty, one piece formed 18 gauge steel finished on all exposed surfaces with white porcelain enamel. Fixed directional air nozzle shall be heavy-duty, rust proof and highly tamper resistant. Air intake slots shall not allow access to internal parts. Circuitry shall have self-adjusting time-out and fail-safe off protection controlled by a microprocessor that shall detect and reject false signals and shall automatically self-calibrate to provide uniform sensitivity over its entire life span. Entire unit shall be internally electrically grounded. Unit shall be warranted against defects in materials or workmanship for five (5) years. Complete Owner's Manual (OM) and Installation Guide (IG) shall be provided with unit.

RATINGS								
MODEL	COLOR	TYPE	AIR VELOCITY	TIMING SAFETY	SUPPLY		AMPS (MAX)	WATTS X1000
					AC VOLTS	HERTZ (HZ)		
10-0199-2-00	White	Hand	45.5~ 70 m/s	Automatic	240	50/60	5.2	0.75 – 1.0
10-0199-2-93	SS Satin			60 second Shut-Off				

MOTOR	H/P	RPM	FAN TYPE	HEATING ELEMENT	CFM m ³ /h	HEAT TEMP.
Brush Type Dual Ball Bearings	0.67	16-29 (ADJ)	Multi-Inlet Centrifugal	325-450 Watt with auto reset circuit breaker Range Adjustable by Owner	42-60 (71-102)	55° C ± 2.8 @ 25° C Ambient room temperature

NET WT	SHIP WT	DRYING TIME	SENSING RANGE	WATER PROTECTION
3.8 kg	4.2 kg	Less than 15 seconds	Standard = 152mm ± 20mm	Drip Proof IP23

SENSOR TYPE	DRYING PERSISTENCE	MOTOR THERMAL PROTECTION	HEATER THERMAL PROTECTION	SOUND PRESSURE
IR 780 nm Self-adjusting	Automatic 2 second Hold-On Shut-Off delay	240v Shut off @ > 95 °C	Shut off @ > 85 °C Reset on @ < 75 °C	66.0 dB-A Maximum @ 2M