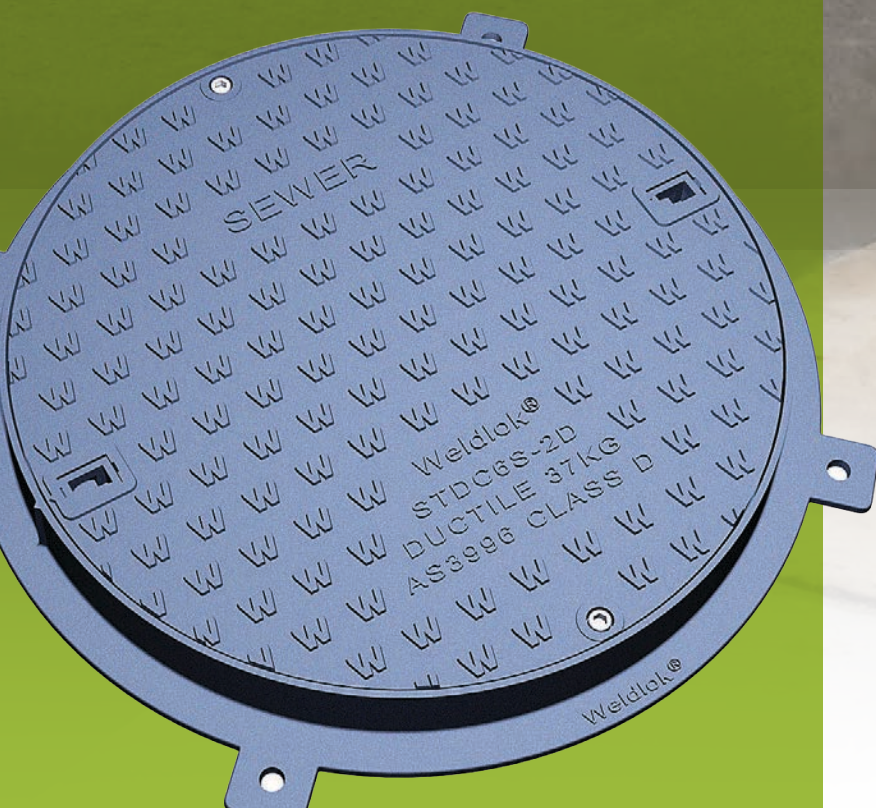


Weldlok®

CIVIL PRODUCTS

Ductile & Steel Technical Guide



Contents

Load Class Selection	04
Products	05
Hinged Pit Grates	05
Pedestrian Access Grates	06
Pedestrian Access Trench	
Grates and Frames	07
Gully Grates	08
Ductile Covers	08
NSW Main Road Grates	09
Roll-Formed Kerb Grates	10
Dished Channel Grates	10
Trench Grates & Frames	11
Surcharge Pit Grates	12
Close Diamond Grating	12
Ductile Range - Circular	13
Ductile Range - Square	14
Ancillary Items	15
Custom Built Grates	15

NEPEAN Building & Infrastructure is a division of NEPEAN, Australia's largest privately owned engineering, mining services and industrial manufacturing organisation.

This brochure is designed to assist councils, civil engineers, architects and drainage contractors with the correct selection of Weldlok® forge-welded mild steel drainage grates and ductile iron drainage grates and covers.

The Weldlok® brand
is proudly owned by





INNOVATIVE DRAINAGE PRODUCTS SETTING THE BENCHMARK

Instrumental in the design and establishment of Galvanised Steel Drainage grates in Australia over 40 years ago.

Today, we pioneer new and specialised designs for Australia's growing needs.

Compliance

Weldlok drainage grates comply with the following Australian Standards, unless stated otherwise:

- **AS3996:2019**
Access covers and grates
- **AS/NZS4680:2006**
Hot-dip galvanising
- **ISO/IEC17025:2005**
Competence of testing and calibration laboratories

Appraisals

A range of Class B and Class D solid top ductile covers have been appraised by the Water Services Association of Australia (WSAA).

Pedestrian/bicycle safe

Weldlok Forgebar & Diamond grates are fully compliant with AS3996:2019 and are suitable for both pedestrian and bicycle traffic environments.

Testing

Drainage grates are load class tested in our NATA-accredited facility. Test reports are available on request, subject to conditions.








The National Association of Testing Authorities (NATA) is Australia's Government-endorsed provider of accreditation for laboratories.

Accreditation No. 12043



LOAD CLASS SELECTION

The stormwater products detailed in this brochure are manufactured to comply with the load classes shown in the table below:

Traffic Conditions		Nominal Wheel Loading (kg)	Serviceability Design Load (kN)	Ultimate Limit Design Load (kN)
CLASS A				
Areas accessible strictly by pedestrians. Not suited to vehicles. Purpose - residential backyards Walkways not accessible by vehicles		330	6.7	10
CLASS B				
Private and shared residential property. Suitable for vehicles accessing driveways and footways. Low speed only. Purpose - residential driveways. Unit sites. Parklands. Residential car parks.		2,670	53	80
CLASS C				
Minor roads and car parks trafficable to vehicles. Purpose - areas with slow moving traffic and minor roads		5,000	100	150
CLASS D				
Major roads including freeway and motorway shoulders. Warehouses and loading docks. Purpose - major roads		8,000	160	240
CLASS E				
Freeway and motorway carriageways. Suitable for all heavy vehicles. Purpose - freeways and motorways		13,700	267	400*
CLASS F				
Docks, wharfs and airport service and taxiways Purpose - heavy and high traffic volumes		20,000	400	600*
CLASS G				
Docks, wharfs and airport runways Purpose - heavy and high traffic volumes		30,000	600	900*

*Class E, F and G subject to availability.

Notes:

1. Nominal wheel loads are given for guidance only. Consideration should be given to the type, size and pneumatic tire pressure of the load applied.
2. Class B design loads exceed AS 5100.2 requirements for footway loading.
3. Class D design loads exceed AS 5100.2 requirements for a W80 wheel load.
4. Class C units are based on an intermediate load.
5. The serviceability load is set at 2/3 of the ultimate limit state design load.
6. A force of 1kN approximately equal to the weight of 100kg.

PRODUCTS

PGF & HPG

Hinged Pit Grates



Innovative new removable hinges interchangeable with heel guard available

Product Code	AS3996:2019 Load Class	Pit Clear Opening Nom. (A) mm	Grate Size (B) mm	Frame Overall (C) mm	Grate Depth (D) mm	Frame Depth (E) mm
PGF0450X0450A-C	A	450 x 450	492 x 455	510 x 525	25	30
PGF0600X0600A-C	A	600 x 600	642 x 605	660 x 675	25	30
PGF0600X0900A-C	A	600 x 900	642 x 905	660 x 975	25	30
PGF0900X0900A-C	A	900 x 900	942 x 905	960 x 975	25	30
HPG0300X0300B-C	B	300 x 300	350 x 305	365 x 370	25	30
PGF0450X0450B-C	B	450 x 450	520 x 455	540 x 555	40	45
PGF0600X0600B-C	B	600 x 600	692 x 605	712 x 727	50	56
PGF0600X0900B-C	B	600 x 900	692 x 905	712 x 1027	50	56
PGF0900X0900B-C	B	900 x 900	980 x 455 (2 No.)	1000 x 1025	57	63
HPG0900X1200B-C	B	900 x 1200	982 x 606 (2 No.)	1000 x 1322	57	65
HPG1200X1200B-C	B	1200 x 1200	1282 x 606 (2 No.)	1300 x 1322	57	65
PGF0450X0450D-C	D	450 x 450	530 x 455	550 x 565	45	50
PGF0600X0600D-C	D	600 x 600	680 x 605	700 x 715	45	50
PGF0600X0900D-C	D	600 x 900	680 x 905	700 x 1015	45	50
HPG0750X0750D-C	D	750 x 750	838 x 756	855 x 862	57	65
PGF0900X0900D-C	D	900 x 900	980 x 455 (2 No.)	1000 x 1025	45	50
HPG0900X1200D-C	D	900 x 1200	900 x 1219	1000 x 1322	57	65
HPG01200X1200D-C	D	1200 x 1200	1282 x 606 (2 No.)	1300 x 1322	57	65
HPG1500X1500B-KIT-C*	B	1500 x 1500	780 x 756 (4 No.)	1600 x 1622	57	65
HPG1500X1500D-KIT-C*	D	1500 x 1500	780 x 756 (4 No.)	1600 x 1622	57	65

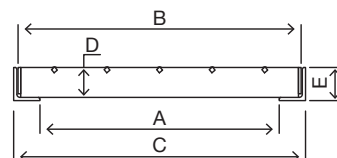
*Kit includes beam and two beam boxes to suit.

The Hinged Pit Grates range is manufactured in standard sizes and class rated to meet AS3996:2019. All grates are hinged for easy access and bolted down to deter unwanted access. The frame has two angles toe-out and reo-lugs for easy tying into your formwork prior to casting.

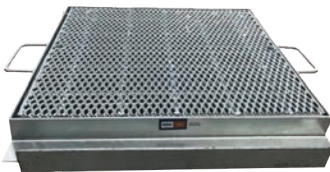
The Weldlok grating pattern is bicycle safe with a 76 percent open area providing superior hydraulic capacity. These grates meet all load class requirements of AS3996:2019 and carry the manufactures name, load class, grate weight and code number as required by AS3996:2019.

Features

- > Removable Hinges for the new PGF range making grate replacement easy
- > Bolt-down security
- > Pedestrian friendly
- > Bicycle safe
- > Class A, B, and D to AS3996:2019
- > For concrete encased pricing please call your local office



PGFHG Pedestrian Access Grates & Frames



Innovative new design for easier ongoing maintenance

Product Code	AS3996:2019 Load Class	Pit Clear Opening Nom. (A) mm	Grate Size (B) mm	Frame Overall (C) mm	Grate Depth (D) mm	Frame Depth (E) mm
PGFHG0450X0450A-C	A	450 x 450	512 x 455	530 x 543	25	40
PGFHG0600X0600A-C	A	600 x 600	660 x 605	680 x 695	25	40
PGFHG0600X0900A-C	A	600 x 900	660 x 905	680 x 995	25	40
PGFHG0900X0900A-C	A	900 x 900	960 x 905	980 x 995	25	40
PGFHG0450X0450B-C	B	450 x 450	530 x 455	550 x 565	40	50
PGFHG0600X0600B-C	B	600 x 600	678 x 605	700 x 715	50	65
PGFHG0600X0900B-C	B	900 x 900	678 x 905	700 x 1015	40	45
PGFHG0900X0900B-C	B	900 x 900	980 x 445 (2 No.)	1000 x 1025	57	65
PGFHG0450X0450D-C	D	450 x 450	540 x 455	560 x 465	45	55
PGFHG0600X0600D-C	D	600 x 600	692 x 605	710 x 725	45	55
PGFHG0600X0900D-C	D	600 x 900	690 x 905	710 x 1025	45	55
PGFHG0900X0900D-C	D	900 x 900	992 x 445 (2 No.)	1010 x 1065	45	55

Newly redesigned Weldlok Heel Guard Grates are available in a range of standard sizes meeting load class requirements. Pedestrian access compliant in both directions, grates have been slip resistance tested by a NATA accredited laboratory. Designed to be safely removed making ongoing maintenance and cleaning quicker and easier.

Suited for use in schools, the PGFHG range complies with council requirements. All grates are tagged with our manufactures name, load class, grate weight and code number as required by AS3996:2019.

Features

- > AS3996:2019 (compliant to Class A,B & D)
- > AS1428 (deemed pedestrian compliant) both directions
- > Flush fit secure lock-down
- > Removable hinges for easy cleaning or grate replacement
- > AS4586 – Surface slip resistant tested by a NATA accredited laboratory:
 - Wet Pendulum - P4 rating
 - Oil-Wet Ramp – R10 rating

TGFHG Pedestrian Access Trench Grates & Frames



Innovative new design for easier ongoing maintenance

Product Code	AS3996:2019 Load Class	Pit Clear Opening Nom. (A) mm	Grate Size (B) mm	Frame Overall (C) mm	Grate Depth (D) mm	Frame Depth (E) mm
TGFHG0150B2-C	B	150	212 x 995 (2 No.)	230	32	40
TGFHG0240B2-C	B	240	302 x 995 (2 No.)	320	25	40
TGFHG0300B2-C	B	300	362 x 995 (2 No.)	380	25	40
TGFHG0450B2-C	B	450	554 x 995 (2 No.)	560	45	50
TGFHG0600B2-C	B	600	682 x 995 (2 No.)	700	57	65
TGFHG0150D2-C	D	150	234 x 995 (2 No.)	250	40	50
TGFHG0240D2-C	D	240	334 x 995 (2 No.)	350	50	55
TGFHG0300D2-C	D	300	382 x 995 (2 No.)	400	50	65
TGFHG0450D2-C	D	450	604 x 995 (2 No.)	630	75	90
TGFHG0600D2-C	D	600	754 x 995 (2 No.)	780	75	90

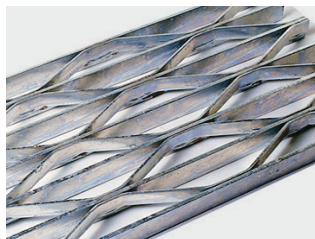
Heel Guard Trench Grates from Weldlok have been recently redesigned and are available in a range of standard sizes meeting load class requirements. Pedestrian access compliant in both directions, grates have been slip resistance tested by a NATA accredited laboratory. Designed to be safely removed making ongoing maintenance and cleaning quicker and easier.

TGFHG ranges are suited for use in schools, complying with council requirements. All grates are tagged with our manufactures name, load class, grate weight and code number as required by AS3996:2019.

Features

- > AS3996:2019 (compliant to Class A,B & D)
- > AS1428 (deemed pedestrian compliant) both directions
- > Flush fit secure lock-down
- > Removable hinges for easy cleaning or grate replacement
- > AS4586 – Surface slip resistant tested by a NATA accredited laboratory:
 - Wet Pendulum - P4 rating
 - Oil-Wet Ramp – R10 rating

Gully Grates



Diamond Grating Pattern

NSW

Product Code	AS3996:2019 Load Class	Pit Clear Opening Nom. mm	Frame Overall mm	Frame Depth mm	Hinged	Usage
GG64-0900X460C-C	C	900 x 460	1105 x 635	skirt	Yes	Median Strip
GG42-0900X0430D-C	D	900 x 430	1035 x 500	65	Yes	NSW Sub-divisions & Highways
GG50-0900X0400D-C	D	900 x 400	1035 x 445	65	Yes	NSW Sub-divisions & Highways
GG-900X0400SD-C	D	900 x 400	1035 x 445	65	Yes	NSW Sub-divisions & Highways
GG52-0900X0400D-C	D	900 x 400	1035 x 445	skirt	Yes	NSW Sub-divisions & Highways
GGSBK0900X0400SD-C	D	900 x 400	1035 x 445	skirt	Yes	NSW Sub-divisions & Highways
GG65-1188X1008CD-C	C & D	1188 x 1008	1400 x 1120	skirt	Yes	Median Strip & Highway
GG0900X0395DD-C	D	900 x 395	1000 x 467	65	No	3 sided frame
GG0900X0460DD-C*	D	900 x 460	1035 x 530	65	Yes	4 sided frame
GG0900X0600DD-C*	D	900 x 620	1020 x 690	65	No	4 sided frame
BCCG9090DD*	D	900 x 980	1000 x 1080	65	No	Bull nose crossing conversion
GG66-0900X0370D-C	D	900 x 370	1400 x 692	skirt	No	Median Strip Gully Grate
RCCG9090DD*	D	900 x 980	1000 x 1080	65	No	Roll over crossing conversion

* Diamond Grates

VIC

Product Code	AS3996:2019 Load Class	Pit Clear Opening Nom. mm	Frame Overall mm	Frame Depth mm	Hinged	Usage
GG0900X0400D-C	D	900 x 400	1035 x 470	65	Yes	Vic. Sub-divisions
GG0900X0520DARD-C	D	900 x 520	1035 x 590	65	Yes	Vic. Sub-divisions
GG0900X0355HUMD-C	D	900 x 355	1002 x 365	65	no	GAA Vic.
GG0900X0338HUMDD-C	D	900 x 338	1000 x 348	65	no	Narrow channel installation
GG084SD1000X0760D-C	D	1000 x 760	1135 x 830	65	Yes	Vic Roads
GG1000X0520D-C	D	1000 x 520	1135 x 590	65	Yes	Vic Roads
GG0900X02552DIAD-A	D	1000 x 525	1120 x 595	65	no	Vic Roads SD1322

Contact our sales team for the most suitable product for your region.

Gully Grates

QLD

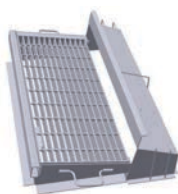


Product Code	AS3996:2019 Load Class	Pit Clear Opening Nom. mm	Frame Overall mm	Frame Depth mm	Hinged	Usage
BCCGG	D	900 x 600	1122 x 676	90	Yes	Brisbane CC
GG-GC9260D	D	900 x 600	1122 x 676	75	Yes	Transport & Main Roads
PGFEHI0600x0600C-C	C	600 x 600	700 x 700	50	no	IPWEAQ & BCC
PGFEHI0600x0900C-C	C	600 x 900	700 x 1000	60	no	IPWEAQ & BCC
PGFEHI1200x1200C-C	C	900 x 900	1230 x 1230	75	no	IPWEAQ & BCC

Designed for use in main roads and subdivisions across Australia where heavy vehicle traffic is expected, these grates are manufactured using forge-welded grating or alternatively diamond pattern grating, where noted. These grates meet all load class requirements of AS3996:2019 and are marked with manufactures name, load class, grate weight and code number as required by AS3996:2019.

Features

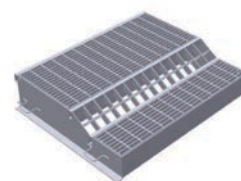
- > Hinged (where noted)
- > Bolt-down security
- > Bicycle safe
- > AS3996 (compliant & to Class C & D)



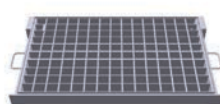
GG57-0900X0400D-C



GG52-0900X0400D-C



GG65-1188X1008CD-C



GG-GC0925X0600D-B



BCCG9090DD*

Ductile Covers



View the Ductile Range
on Page 13

Product Code	AS3996:2019 Load Class	Product Description	Clear Opening mm	Cover Weight mm	Frame Depth mm
QUU-STDC0600S4B-C	B	Solid Top Ductile 600Dia C/O Sewer Cover & Frame with 4 Bolt downs Class B	600	30	60
QUU-CIDC0600S4B-C	B	Conc. Infill Ductile 600Dia C/O Sewer Cover & Frame with 4 Bolt downs Class B	600	30	60
QUU-STDC0600S4D-C	D	Solid Top Ductile 600Dia C/O Sewer Cover & Frame with 4 Bolt downs Class D	600	40	150
BCC-STDSCW0600S4D-C	D	Solid Top Ductile 600Dia C/O Storm Water Cover & Frame with 4 Bolt downs Class D	600	40	150

Contact our sales team for the most suitable product for your region.

MRG NSW Main Road Grates

Product Code	AS3996:2019 Load Class	Pit Clear Opening Nom. mm	Frame Overall mm	Frame Depth mm	Bicycle Safe	Bolt-down	Usage
LPGSAL0850X0525D-C	D	850 x 525	950 x 585	65	Yes	Yes	Highways
LPGSAS0850X0372D-C	D	850 x 372	950 x 432	65	Yes	Yes	Highways
LPGSE0522X0405D-C	D	522 x 318	722 x 540	81	Yes	Yes	Highways
LPGSOS0750X0750D-C	D	704 x 753	830 x 765	65	Yes	Yes	Highways
LPGSOD1540X0750D-C	D	1544 x 753	1670 x 765	65	Yes	Yes	Highways
LPGSKS0880X0700D-C	D	704 x 880	830 x 892	65	Yes	Yes	Highways
LPGSKD1540X0880D-C	D	1544 x 880	1670 x 892	65	Yes	Yes	Highways
LPGF0642X0522D-C	D	642 x 522	742 x 622	65	Yes	Yes	Highways
LPGFS0920X0372D-C	D	920 x 372	1020 x 432	65	Yes	Yes	Highways
LPGMGSG0678X0645D-C	N/A	640 x 678	820 x 690	90	No	No	Field inlet

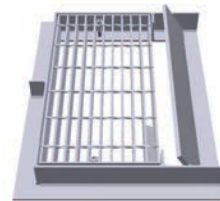
These grates are specifically manufactured to RMS designs for use across all main roads throughout NSW. All grates have security bolt-downs and are bicycle safe (excluding the LPGMGSG & LPGSF-GRILLE) for use on highways. The Weldlok grating pattern used has a 76 percent open area providing superior hydraulic capacity. These grates meet all load class requirements to AS3996:2019 and are tagged with manufactures name, load class, grate weight and code number as required by AS3996:2019.

Features

- > Bolt-down security
- > Bicycle safe (Excludes LPGMGSG & LPGSF-GRILLE)
- > AS3996 (compliant to Class D)



LPGSAL0850X0525D-C



LPGSE0522X0405D-C



LPGSOS0750X0750D-C



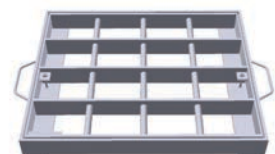
LPGSKS0880X0700D-C



LPGFS0920X0372D-C



LPGSF-GRILLE-C



LPGMGSG0678X0645D-C

RFK Roll-Formed Kerb Grates



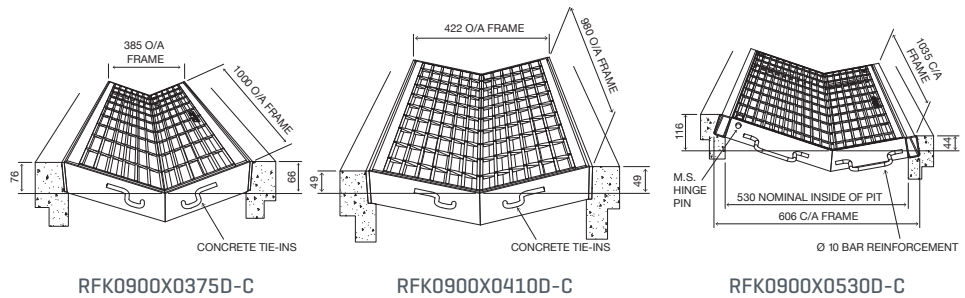
Product Code	AS3996:2019 Load Class	Pit Clear Opening Nom. mm	Frame Overall mm	Frame Depth mm	Hinged	Bolt-down	Usage
RFK0900X0375D-C	D	900 x 380	1000 x 385	65	No	Yes	Sub-divisions
RFK0900X0410D-C	D	900 x 400	980 x 422	65	No	Yes	Sub-divisions
RFK0900X0530D-C	D	935 x 500	1035 x 608	65	Yes	Yes	Sub-divisions
RFK198DTEI-C	D	900 x 600	1000 x 618	65	No	Yes	Sub-divisions

These grates are specifically designed to suit the roll of the kerb and are used predominantly in sub divisions. All grates are hinged for easy access and bolted down to deter unwanted access. The frame comes with reo-lugs for easy tying into your formwork prior to casting and meets all load class requirements of AS3996:2019.

All grates are tagged with manufactures name, load class, grate weight and code number as required by AS3996:2019.

Features

- > Bolt-down security
- > AS3996 (compliant to Class D)



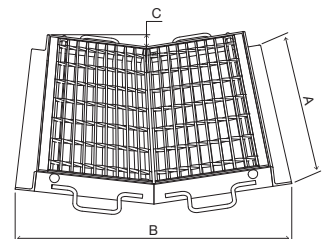
DCG Dished Channel Grates



Product Code	AS3996:2019 Load Class	Pit Clear Opening Nom. mm	Frame Overall (A x B) mm	Invert (C) mm	Frame Depth mm	Hinged	Bolt-down	Usage
DCG0600X0600D-C	D	610 x 630	710 x 730	48	65	Yes	Yes	Dished crossings
DCG0900X0600D-C	D	910 x 626	1010 x 725	48	65	Yes	Yes	Dished crossings
DCG0750X0750D-C	D	760 x 745	860 x 844	45	65	Yes	Yes	Dished crossings
DCG0900X0800D-C	D	910 x 805	1010 x 904	60	65	Yes	Yes	Dished crossings
DCG0900X0900D-C	D	905 x 900	1005 x 1000	50	65	Yes	Yes	Dished crossings
DCG96DIAD*	D	900 x 660	1000 x 760	50	65	Yes	Yes	Dished crossings

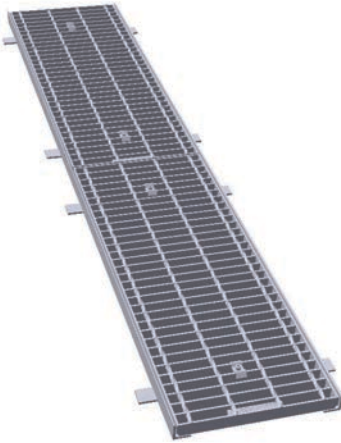
* Diamond Grates

These grates are specifically designed to suit dished crossings. The frame comes with reo-lugs for easy tying into your formwork prior to casting and meets all load class requirements to AS3996:2019. All grates are tagged with manufactures name, load class, grate weight and code number as required by AS3996:2019



Contact our sales team for location specific RFK & DCG grates.

TGF Trench Grates & Frames



Product Code	AS3996:2019 Load Class	Clear Opening (A) mm	Grate width x length (B) x length mm	Frame Overall (C) mm	Grate Depth (D) mm	Frame Depth (E) mm
TGF0200A2-C*	A	200	246 x 995 (2 No.)	260	25	30
TGF0200A3-C*	A	200	246 x 995 (3 No.)	260	25	30
TGF0150B2-C	B	150	214 x 995 (2 No.)	230	32	40
TGF0150B3-C	B	150	214 x 995 (3 No.)	230	32	40
TGF0240B2-C	B	240	285 x 995 (2 No.)	300	25	30
TGF0240B3-C	B	240	285 x 995 (3 No.)	300	25	30
TGF0300B2-C	B	300	364 x 995 (2 No.)	380	32	40
TGF0300B3-C	B	300	364 x 995 (3 No.)	380	32	40
TGF0450B2-C	B	450	534 x 995 (2 No.)	550	45	50
TGF0450B3-C	B	450	534 x 995 (3 No.)	550	45	50
TGF0600B2-C	B	600	682 x 995 (2 No.)	700	57	65
TGF0600B3-C	B	600	682 x 995 (3 No.)	700	57	65
TGF0150D2-C	D	150	224 x 995 (2 No.)	240	40	45
TGF0150D3-C	D	150	224 x 995 (3 No.)	240	40	45
TGF0240D2-C	D	240	334 x 995 (2 No.)	350	50	55
TGF0240D3-C	D	240	334 x 995 (3 No.)	350	50	55
TGF0300D2-C	D	300	378 x 995 (2 No.)	400	65	75
TGF0300D3-C	D	300	378 x 995 (3 No.)	400	65	75
TGF0450D2-C	D	450	544 x 995 (2 No.)	562	75	81
TGF0450D3-C	D	450	544 x 995 (3 No.)	562	75	81
TGF0600D2-C	D	600	694 x 995 (2 No.)	712	75	81
TGF0600D3-C	D	600	694 x 995 (3 No.)	712	75	81

* Indicates made-to-order.

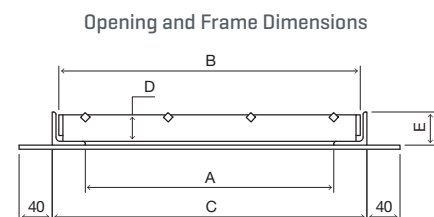
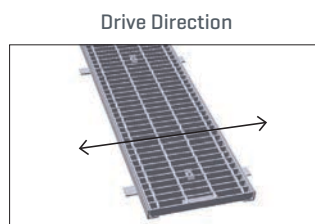
Trench Grates & Frames are manufactured in a range of standard sizes and class rated to meet customer requirements. All grates are bolted down to deter unwanted access and to ensure the grate does not work loose or rattle in the frame. The frame comes with flat bar on each side for easy tying into your formwork prior to casting.

The Weldlok grating pattern is bicycle safe with a 76 percent open area providing superior hydraulic capacity. These grates meet all load class requirements to AS3996:2019 and are tagged with manufactures name, load class, grate weight and code number as required by AS3996:2019.

Features

- > Bolt-down security
- > Bicycle safe
- > AS3996:2019 (compliant to Class A, B & D)

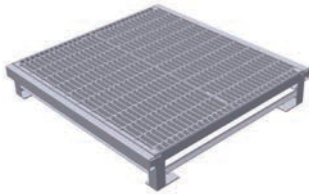
Direction of traffic for forge-welded grating to be predominantly parallel to load bars in Class D applications. For multi-directional travel, diamond grating is recommended.



Note: The above forgewelded trench grates may not be suitable for forklifts & heavy vehicles.

Before specifying or selecting, please consult our sales team for advise on the most suitable grating material to suit your application.

SPG Surcharge Pit Grates



BL = Bolt-In | CL = Cast-In

Product Code	AS3996:2019 Load Class	Grating Panels	Pit Clear Opening nom. mm	Frame Overall A x B mm
SPG0600X0600BL-C	A	Single	600 x 600	800 x 750
SPG0600X0900BL-C	A	Single	600 x 900	1070 x 800
SPG0900X0900BL-C	A	Double	900 x 900	1100 x 1050
SPG0900X1200BL-C	A	Double	900 x 1200	1350 x 1100
SPG1200X1200BL-C	A	Double	1200 x 1200	1400 x 1350
SPG1500X1500BL-C*	A	Double	1500 x 1500	1700 x 1700
SPG0600X0600CL-C*	A	Single	600 x 600	800 x 750
SPG0600X0900CL-C*	A	Single	600 x 900	1070 x 800
SPG0900X0900CL-C*	A	Double	900 x 900	1100 x 1050
SPG0900X1200CL-C*	A	Double	900 x 1200	1350 x 1100
SPG1200X1200CL-C*	A	Double	1200 x 1200	1400 x 1350

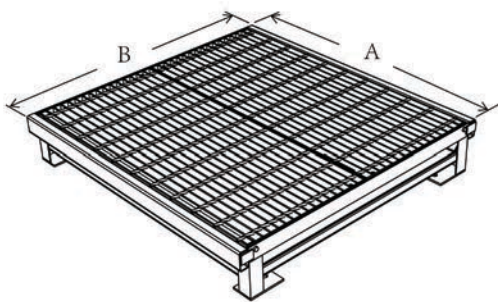
* Indicates made-to-order.

Surcharge Pit Grates are manufactured in a range of standard sizes and are hinged and bolted down with options for bolt down or cast-in legs, generally 300mm long. The bolt down range is suitable for existing pits or where the concrete has been poured before the grate arrives and bolted down to the pit surface wall as required. Cast-in legs are typically used when the grate is cast-in while the pit concrete wall is being poured.

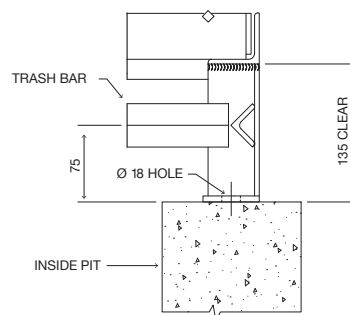
Weldlok can manufacture most sizes and lengths to accommodate your requirements and all grates are tagged with manufacturer's name, load class, grate weight and code number as required by AS3996:2019.

Features

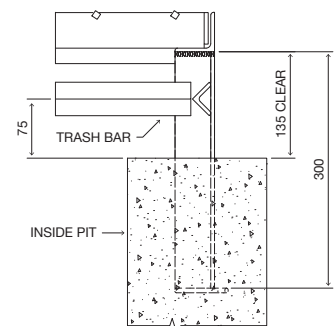
- > Hinged (where noted)
- > Bolt-down security
- > Trash Bar
- > AS3996 (compliant to Class A)



Diagrammatic image of SPG1200X1200BL-c

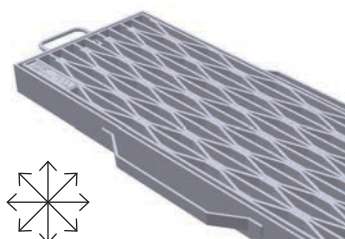
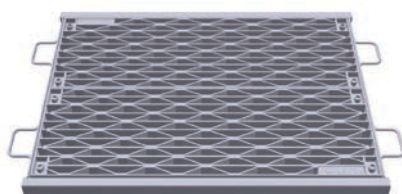


SPG Standard Bolted Leg



SPG Standard Cast-in Leg

CDG Close Diamond Grating



Close Diamond Grating is designed for applications with sustained heavy wheel loads where multi-directional travel across the grating is required. Formed spacer bars can be varied in size to suit the depth of the load bars thus providing maximum lateral restraint for the load bars.

DUCTILE RANGE

STDC Solid Top Ductile Circular

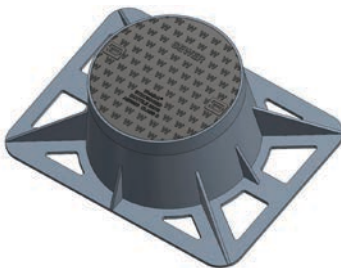


Product Code	AS3996:2019 Load Class	Product Description	Clear Opening mm	Cover Weight kg	Frame Depth mm
STDCS0600-2B-C	B	Solid Top Ductile Circular 600 C/O Sewer C&F Class B & 2 Bolt-downs	600	28	72
STDCSW0600-2B-C	B	Solid Top Ductile Circular 600 C/O Stormwater C&F Class B & 2 Bolt-downs	600	28	72
STDCP0600-2B	B	Solid Top Ductile Circular 600 C/O Plain C&F Class B & 2 Bolt-downs	600	28	72
STDCS0600-2D-C	D	Solid Top Ductile Circular 600 C/O Sewer C&F Class D & 2 Bolt-downs	600	34	72
STDCSW0600-2D-C	D	Solid Top Ductile Circular 600 C/O Stormwater C&F Class D & 2 Bolt-downs	600	34	72
STDCP0600-2D	D	Solid Top Ductile Circular 600 C/O Plain C&F Class D & 2 Bolt-downs	600	34	72
STDCCES0600-2B-B	B	Conc.Encased Solid Top Ductile Circular 600 C/O Sewer C&F Class B & 2 Bolt-downs	600	28	150*
STDCCES0600-2D-B	D	Conc.Encased Solid Top Ductile Circular 600 C/O Sewer C&F Class D & 2 Bolt-downs	600	34	150*
STDCCESW0600-2B-B	B	Conc.Encased Solid Top Ductile Circular 600 C/O Stormwater C&F Class B & 2 Bolt-downs	600	28	150*
STDCCESW0600-2D-B	D	Conc.Encased Solid Top Ductile Circular 600 C/O Stormwater C&F Class D & 2 Bolt-downs	600	34	150*

Features

- > Non Skid Surface
- > Gas & Water tight
- > Light Weight Cover
- > Bolt-down security
- > * Depth of concrete
- > Two Covered Lifting Points
- > Class B & D available in Sewer or Stormwater
- > Class B and D to AS3996:2019

STDCM Solid Top Ductile Circular Maintenance



Product Code	AS3996:2019 Load Class	Product Description	Clear Opening mm	Cover Weight kg	Frame Depth mm
STDCS0367B-C	B	Duct Circ ST 367 Maintenance Shaft Sewer C&F Class B	367	14	84
STDCS0367D-C	D	Duct Circ ST 367 Maintenance Shaft Sewer C&F Class D	367	26	84
STDCCES0367B-B	B	Conc.Encased Duct Circ ST 367 Maintenance Shaft Sewer C&F Class B	367	14	125*
STDCCES0367D-B	D	Conc.Encased Duct Circ ST 367 Maintenance Shaft Sewer C&F Class D	367	26	125*
STDCS0375B-C	B	Duct Circ ST 370 Class B Maintenance Shaft Sewer C&F	370	14	325
STDCS0432D-C	D	Duct Circ ST 432 Class D Maintenance Shaft Sewer C&F	432	31	325

Features

- > Non Skid Surface
- > Gas & Water tight
- > Light Weight Cover
- > Two Covered Lifting Points
- > Class B and D to AS3996:2019

STDSR Solid Top Ductile Square/Rectangular



Product Code	AS3996:2019 Load Class	Product Description	Clear Opening mm	Cover Weight kg	Frame Depth mm
STDSR0450X0450B-C	B	S.T Ductile Sq/Rec. 450x450mm Gas Tight Class B Access C&F	450 x 450	26	48
STDSR0450X0450D-C	D	S.T Ductile Sq/Rec. 450x450mm Gas Tight Class D Access C&F	450 x 450	40	89
STDSR0600X0600B-C	B	S.T Ductile Sq/Rec. 600x600mm Gas Tight Class B Access C&F	600 x 600	41	48
STDSR0600X0600D-C	D	S.T Ductile Sq/Rec. 600x600mm Gas Tight Class D Access C&F	600 x 600	58	89
STDSR0900X0600B-C	B	S.T Ductile Sq/Rec. 900x600mm Gas Tight Class B Access C&F	900 x 600	60	48
STDSR0900X0600D-C	D	S.T Ductile Sq/Rec. 900x600mm Gas Tight Class D Access C&F	900 x 600	90	89
STDSR0900X0900B-C	B	S.T Ductile Sq/Rec. 900x900mm Gas Tight Class B Access C&F	900 x 900	83	48
STDSR0900X0900D-C	D	S.T Ductile Sq/Rec. 900x900mm Gas Tight Class D Access C&F	900 x 900	105	89

Features

- > Non Skid Surface
- > Bolt-down security
- > Two Covered Lifting Points
- > Class B and D to AS3996:2019

All items concrete encased on request

CIDSR Concrete Infill Ductile Square/Rectangular



NEW DESIGN AVAILABLE
Gas & water tight with 4-piece frame that can join in a trench run

Product Code	AS3996:2019 Load Class	Product Description	Clear Opening mm	Cover Weight kg	Frame Depth mm
CIDSR0450X0450B-C	B	Concrete Infill Ductile Sq/Rec 450x450mm Gas Tight Class B Access C&F	450 x 450	28	48
CIDSR0450X0450D-C	D	Concrete Infill Ductile Sq/Rec 450x450mm Gas Tight Class D Access C&F	450 x 450	42	89
CIDSR0600X0600B-C	B	Concrete Infill Ductile Sq/Rec 600x600mm Gas Tight Class B Access C&F	600 x 600	43	48
CIDSR0600X0600D-C	D	Concrete Infill Ductile Sq/Rec 600x600mm Gas Tight Class D Access C&F	600 x 600	72	89
CIDSR0900X0600B-C	B	Concrete Infill Ductile Sq/Rec 900x600mm Gas Tight Class B Access C&F	900 x 600	68	48
CIDSR0900X0600D-C	D	Concrete Infill Ductile Sq/Rec 900x600mm Gas Tight Class D Access C&F	900 x 600	105	89
CIDSR0900X0900B-C	B	Concrete Infill Ductile Sq/Rec 900x900mm Gas Tight Class B Access C&F	900 x 900	90	48
CIDSR0900X0900D-C	D	Concrete Infill Ductile Sq/Rec 900x900mm Gas Tight Class D Access C&F	900 x 900	128	89

Features

- > No Holes in Base
- > Bolt-down security
- > Four Covered Lifting Points
- > Class B and D to AS3996:2019

All items concrete encased on request.

ANCILLARY ITEMS

Lifting handle
Suits all covers

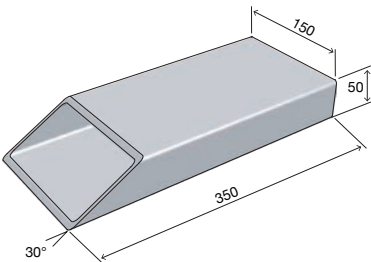


Product Code	AS3996:2019 Load Class	Product Description
CDLIFT-TOOL	N/A	Cast Drainage Lifting Tool

- Features
- > Long Handle
 - > Easy Removal Without Lifting
 - > Suits all covers

Weep Hole
Hot dip galvanised

- Features
- > Hot-dip galvanised
 - > 150mm width
 - > 30 degree angled opening



CUSTOM BUILT GRATES

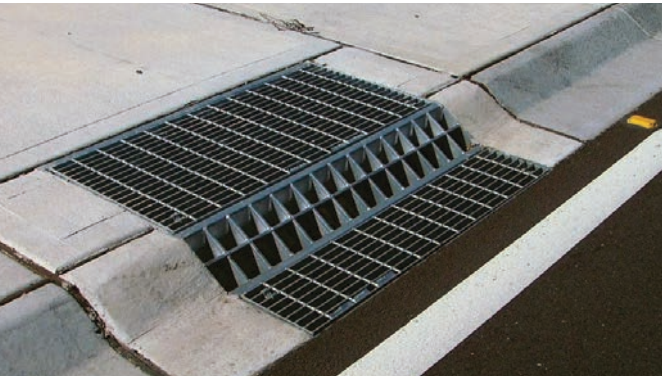
For over 40 years custom designed & manufactured Weldlok drainage grates have solved many specialised drainage problems. NEPEAN Building and Infrastructure understands the challenges Civil Engineers face when requiring grates to cover special drainage pits.

Whether the pits have large openings requiring multi-part covers, to irregular shapes or the need is to take heavy multi directional loading requiring diamond pattern grates, NEPEAN Building & Infrastructure have the expertise to design a Weldlok custom grate to suit your application.

Many Weldlok custom grates can be load tested to ensure compliance with AS3996:2019, if required*.

Please contact our Technical Department for further details.

*Subject to conditions.



NEPEAN Building and Infrastructure

Originally founded as Graham Group, NEPEAN Building & Infrastructure is one of Australia's largest fully integrated manufacturers and suppliers of metal products for the civil, industrial and commercial building sectors.

Proudly Australian Owned.

Branches

New South Wales

117-153 Rookwood Road
Yagoona NSW 2199

P: + 61 2 9707 5088
E: info@weldlok.com.au

Victoria

171 Derrimut Drive
Derrimut VIC 3026

P: + 61 3 8353 3701
E: vic.bi@nepean.com

Queensland

967 Nudgee Road
Bayno QLD 4014

P: + 61 7 3633 1333
E: qld.bi@nepean.com

Western Australia & Northern Territory

98 Campbell Street
Belmont WA 6104

P: + 61 8 9478 1034
E: wa.bi@nepean.com

Visit us online
Freecall

weldlok.com.au
1800 WELDLOK

Information contained in this brochure is supplied in good faith and with the view to assist the user in the correct selection of our products. While every care is taken to ensure that the information contained in this brochure is correct, no warranty is made nor is any condition expressed or implied. As the use of products sold is beyond our control, a condition of purchase is that the purchaser accepts responsibility for ensuring that products purchased are suitable for the intended use. NEPEAN Building & Infrastructure is committed to continual product improvement and therefore reserves the right to change details and designs without notice. All dimensions listed in this brochure are nominal sizes.

© NEPEAN Building & Infrastructure, October 2021.



Weldlok®