

REUSE  
PROTECT  
PRESERVE



Suitable for installation with:



Roller  
Shades



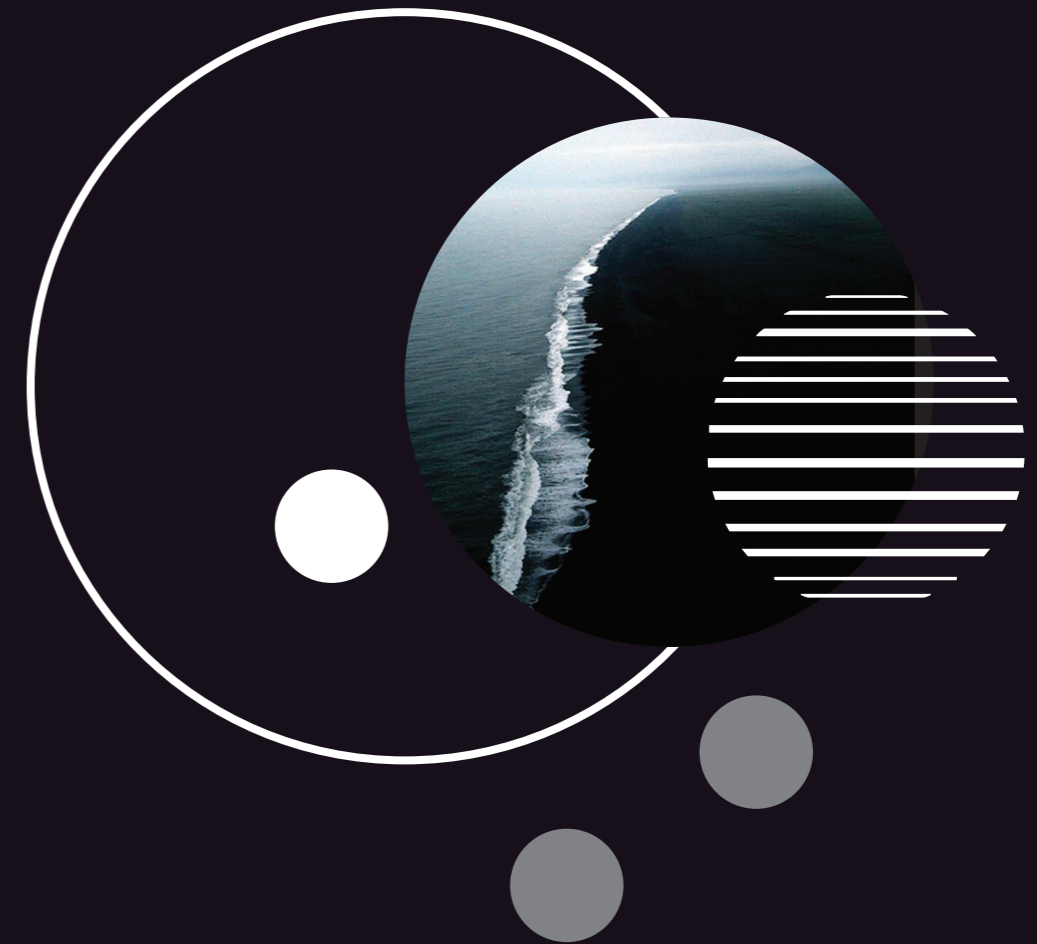
Panel Glide  
Shades



Vertical  
Shades



ROLLER SHADE SOLAR CONTROL FABRIC



**CR 88**

MADE FROM BEST PRACTICE PVC  
RECYCLABLE

**METALLISED**

ROLLER SHADE SOLAR CONTROL FABRIC



# CR 88 Metallised

- Openness Factor . **Of** •
- Ultraviolet Transmittance . **Tuv** •
- Light Transmittance . **Tv** •
- Light Reflectance . **Rv** •
- Solar Transmittance . **Ts** •
- Solar Reflectance . **Rs** •
- Solar Absorption . **As** •
- G Value . **G tot** •

8%
openness factor

267 cm
fabric width

0.45 mm
thickness

360 g/m<sup>2</sup>
weight

THIS FABRIC IS MADE FROM BEST PRACTICE PVC

## FENESTRATION PROPERTIES

	OF	Tuv	Tv	Rv	Ts	Rs	As	G Value	
								C Glaze	D Glaze
WHITE	8%	9%	9%	69%	9%	67%	24%	0.35	0.26
ANTHRACITE	8%	9%	7%	63%	8%	61%	31%	0.37	0.27
GREY	8%	9%	8%	67%	9%	63%	28%	0.36	0.26
LIGHT GREY	8%	8%	8%	64%	8%	64%	28%	0.35	0.27
PEWTER	8%	8%	8%	65%	9%	63%	28%	0.36	0.27
BRONZE	8%	8%	7%	63%	9%	62%	29%	0.37	0.27
CHARCOAL	8%	8%	7%	63%	8%	61%	31%	0.38	0.27

Data is current at time of printing. Please check website for most current information.

### Care Instructions

Remove dust with vacuum cleaner or compressed air. Do not scrub. Use of solvents or abrasive substance will damage the coating of the fabric. All chemicals will cause permanent damage to the fabric. When cleaning windows raise the blind. Avoid any spray or splatter of chemicals on the fabric.

### Width

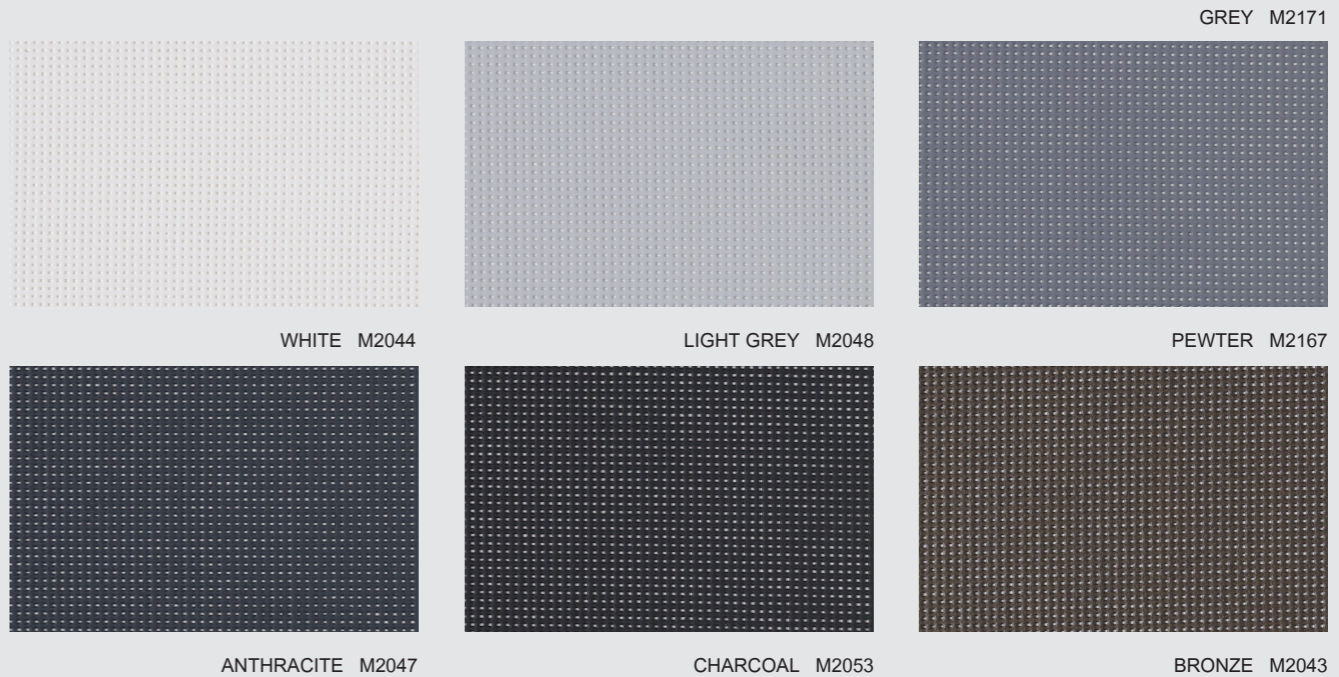
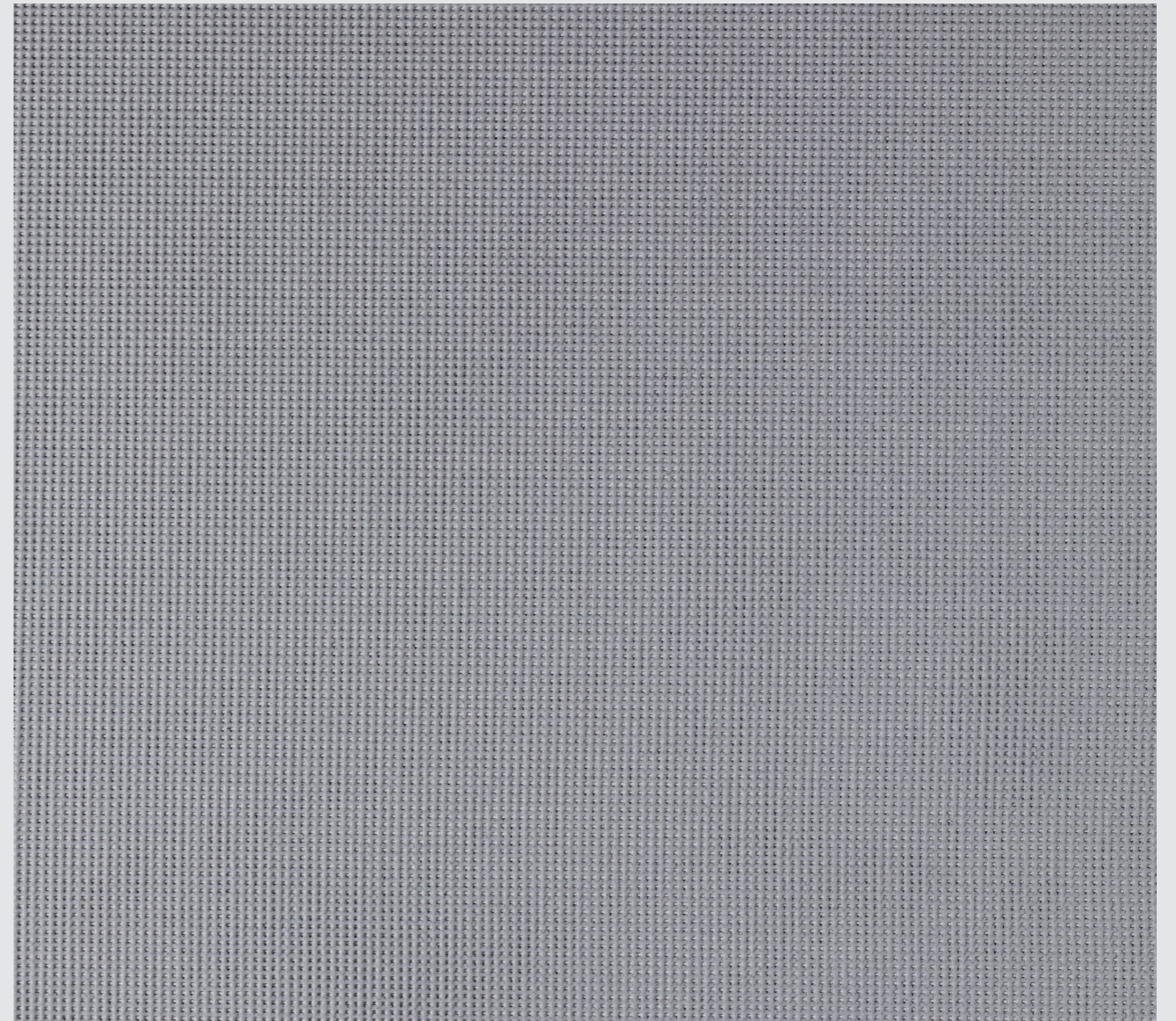
Maximum Roller Shade width: 2670 mm.

### Fabric Warranty

5 Years (internal use only).

### Railroad

This fabric can be railroaded.



GREY M2171

WHITE M2044

LIGHT GREY M2048

PEWTER M2167

ANTHRACITE M2047

CHARCOAL M2053

BRONZE M2043



Order a memo sample: [info@climatereadyfabrics.com.au](mailto:info@climatereadyfabrics.com.au)