

SALTO
inspiredaccess

Contactless solutions | networked locking system



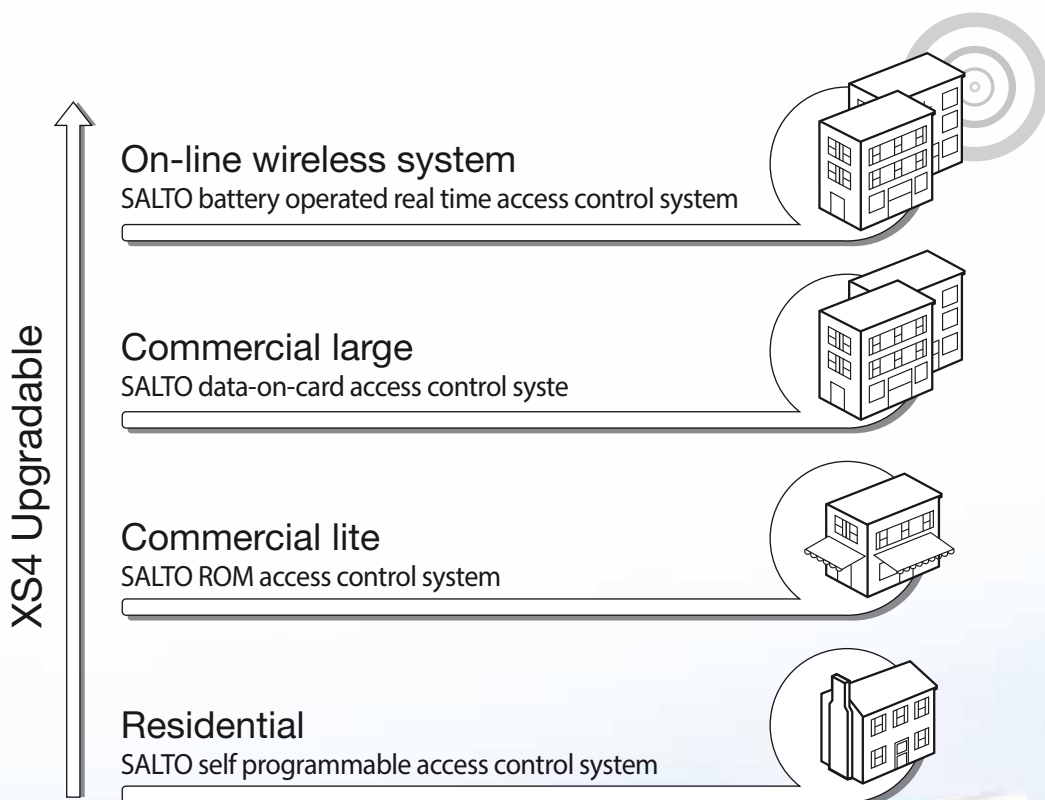
**ONE CARD,
ONE TECHNOLOGY
UNLIMITED POSSIBILITIES**

ONE CARD, ONE TECHNOLOGY ... UNLIMITED POSSIBILITIES

Introducing the new **XS4 RFID system**, a new concept in access control that allows you to **JUMP** up to the next level when your needs change.

SALTO Systems unique new networked lock set can be used for a huge range of access control applications. It's the first RFID system that can be upgraded at any time.

You choose the level of control you need. From a simple self programmable system that needs no computer to manage it, through a highly capable mid-range ROM system up to the high performance data on card technology SALTO Virtual Network (SVN) system that allows you to control all the doors in an entire building or group of buildings from a single PC. And now with the brand new XS4 on-line battery operated wireless lock system you can experience real time access control solutions without the need for wiring.



Grand Hotel in Lymington, St. Armes, UK Pressport Offices, Edinburgh
Sydney University Village, Australia · St. Francis · AS





RESIDENTIAL APPLICATIONS

a new era in your life - keyless world

Unlike conventional locks where if the keys are lost you have the expense and inconvenience of replacing all the affected locks and keys with the new SALTO XS4 RFID e-lock or e-cylinder self programmable system you just delete the missing key from the system and issue a new one to the user. It's that simple.

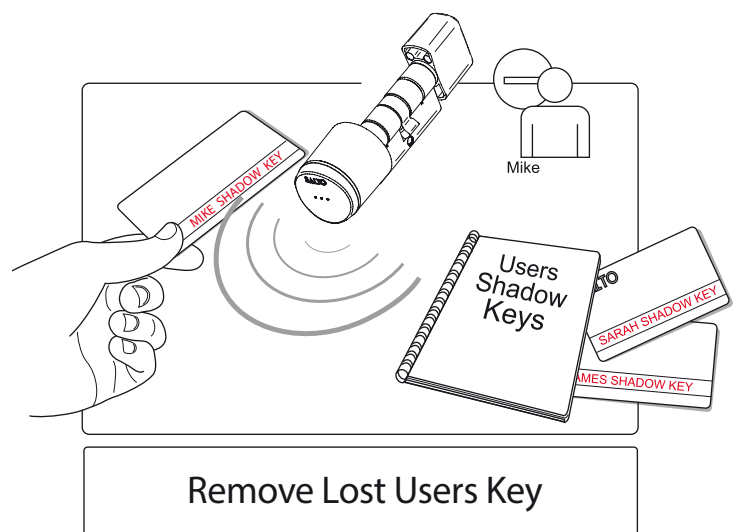
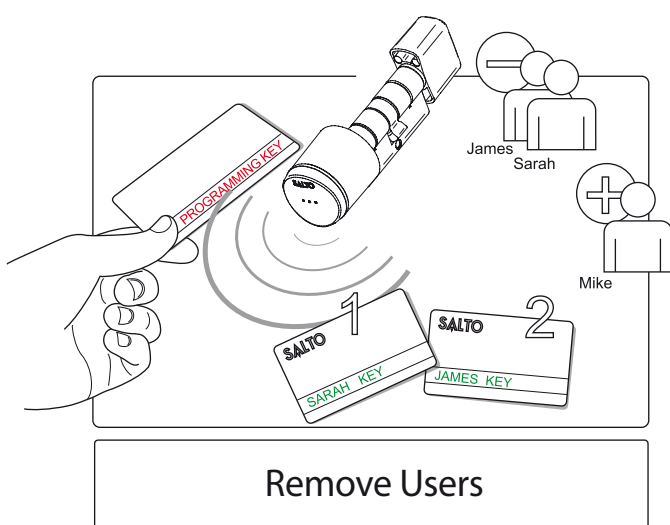
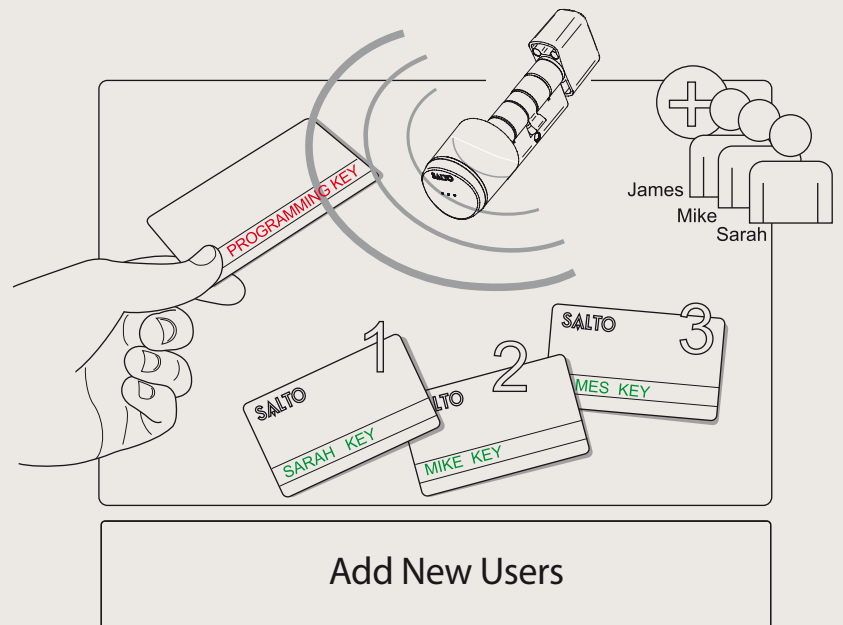
How does it work?

If you need to add new users you just have to present the programming key once to the reader followed by the user keys that you want to operate this lock. You can close

the programming procedure by presenting the programming key again at the end, or wait 5 seconds for the lock to close the programming mode itself (a single beep will be heard).

If you want to delete a user key, which is still in your possession, you simply present the programming key followed by the user key (or keys) you want to delete. The process is closed by presenting the programming key again, or by time out.

If a user key is lost it can be deleted from a lock just by touching the shadow card of this user key to the reader. The user key related to the shadow key used is then deleted.



Main features and advantages

- Wire free and battery powered, no complicated installation is needed and the existing mortise lock can be kept reducing the installation cost.
- The electronic cylinder is approved to the highest European security standards including VdS in Germany and SKG in the Netherlands.
- Needs no computer, all key maintenance is done through a programming key and user's shadow keys. This allows up to 1,000 system users.
- Available in a huge range of solutions depending on the door as e-lock or electronic cylinder, wall readers, automatic door version, panic bar and euro mortise lock.
- Available passage mode in all versions, permitting the door to be opened if needed.
- Emergency opening can be performed if needed through the EPS100.
- The system can be upgraded simply by using a Portable Programming Device (PPD) making it possible to upgrade to a ROM system or a data on card SVN system when your needs change.



COMMERCIAL LITE

If you need a higher level of control over who is entering your building and when, the SALTO XS4 RFID ROM is the answer. It is designed for use in small to medium sized businesses, retail premises and office buildings that only need to control a small number of doors and users. It provides all the benefits of a stand alone access control system in a compact, cost effective package.

No complicated wiring or other intrusive work is required and you can continue to use your existing mortise locks – reducing the installation cost. It's easy to use Pro Access ROM software can be customized to suit your needs so you can add users and doors, user groups and zones and set time periods and opening modes that instruct the door to lock or unlock automatically as needed.

And if your access control needs grow, the XS4 RFID ROM system can be upgraded at any time to a complete data on card SVN system without having to change any of the door hardware.

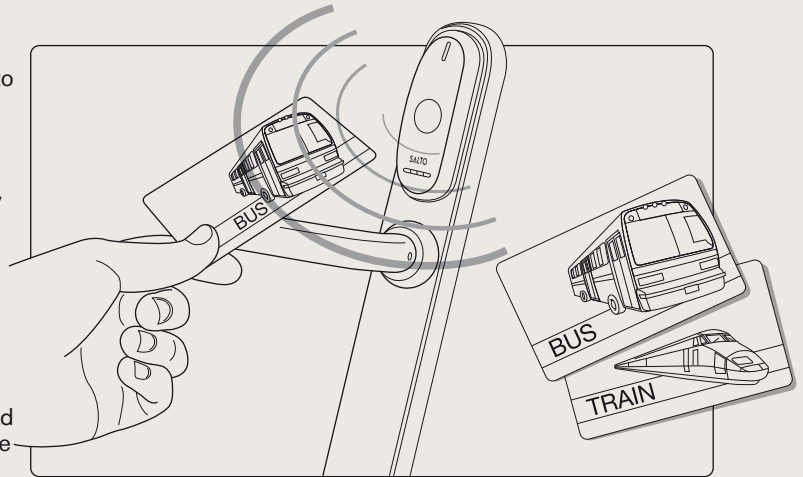
How does it work?

The SALTO XS4 RFID ROM system can use all current RFID cards (in self programming mode) enabling you to enrol users without any need to write on the card. This makes it possible to work with all the popular types of transport cards including bus and train cards with no programming and no approvals required.

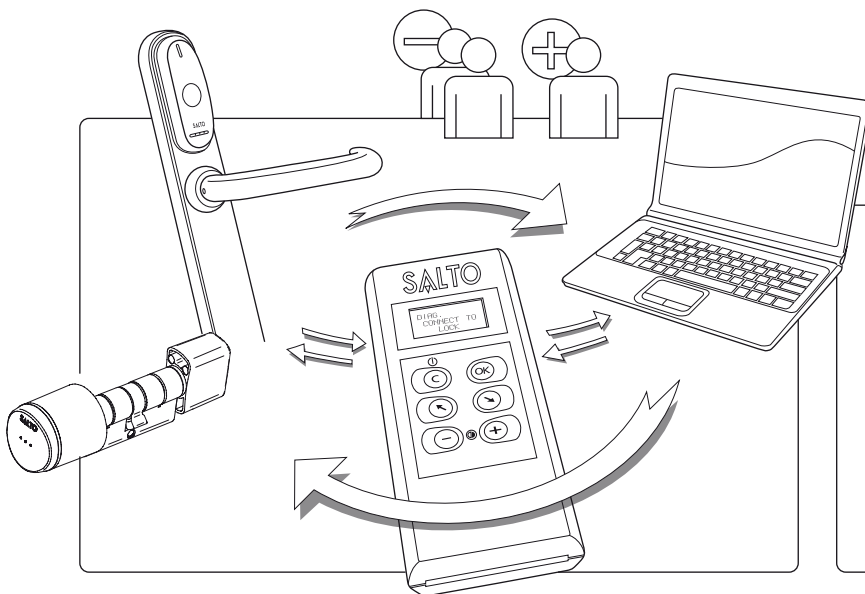
It's also very simple to use. Any changes you make such as adding new users, deleting users, updating the e-lock, e-cylinder or wall reader, or collecting the event audit trail are done through its Pro Access ROM software.

When complete, these changes are downloaded into a Portable Programming Device (PPD) in order to then update all the

off-line e-locks, or e-cylinders. Each time you connect the PPD to an e-lock, e-cylinder or wall reader, the software will automatically download the battery status and the event audit trail so that this information can be updated on the computer. This allows users to program for or plan maintenance when convenient and, if required, also provides management reports on user access movements around the building



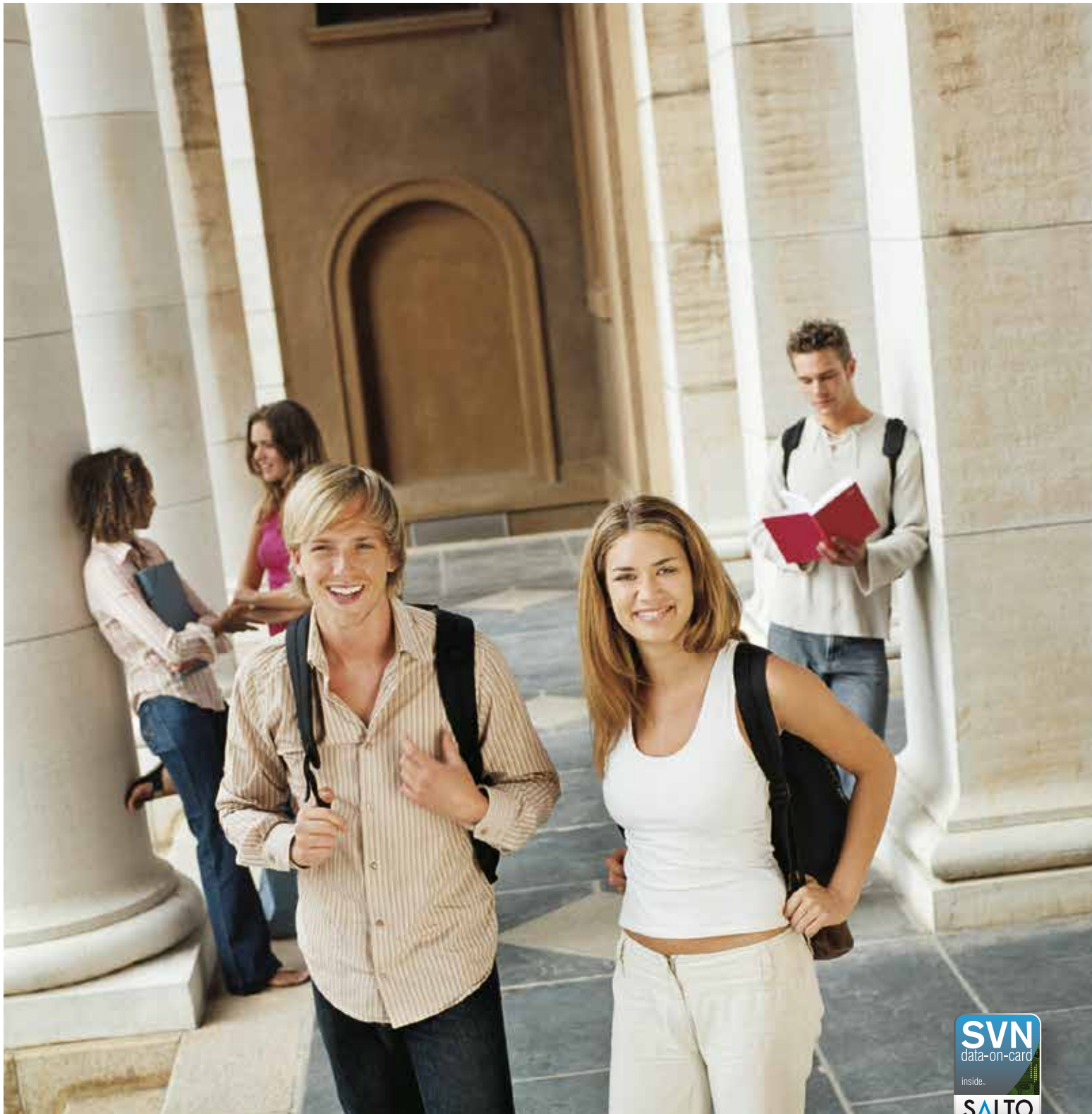
You can use existing **RFID** cards
No card issuing required



- Add or delete user
- Set up users profiles (calendars, shifts...)
- Change lock opening modes
- Event audit trail
- Stand alone locks battery status remote report

Main features and advantages

- Wire free and battery powered, no complicated installation is needed and the existing mortise lock can be kept reducing the installation cost for almost every kind of door.
- Computer managed permitting the configuration of the e-locks, monitoring of access flows, record access, add and remove users and set up the user access profile.
- The system can manage up to 16,000 users and 64,000 doors.
- 8 different opening modes to suit your needs (standard, free passage ability, free passage with automatic locking, Automatic opening, Toggle, and timed Toggle).
- 256 time zones and 256 calendars.
- 1000 door events held in the lock / e-cylinder memory.
- The system can be upgraded simply by using a Portable Programming Device (PPD) making it possible to upgrade to a data on card SVN system when your needs change.
- Multiplication through the RFID carrier enables use of existing MIFARE/DESFIRE, HID iCLASS or PICOPASS cards.

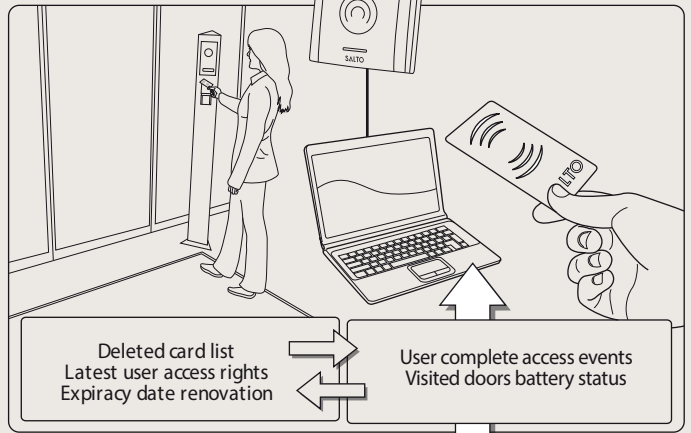


COMMERCIAL LARGE - Data on card locking system

The SALTO XS4 data on card access control system is designed for use in larger buildings such as universities, airports, hospitals etc. It enables users to work in a wire free environment so there is no need to hard wire. This allows you to keep your original doors and locks in place, making installation fast, self contained and straight forward.

It allows you to control your entire building remotely and in almost real time through the SALTO Virtual Network (SVN). This advanced software system allows stand alone locks to read, receive and write information via its operating smart cards or 'intelligent' keys. This data is captured from the cards at SVN on-line hot spots located at strategic points around the building. The "hot spot" uploads and downloads user related information that is then used to permit, control or deny access.

Access to on-line point the entrance door



- Add or delete users remotely
- Update users profile "on the fly" (Calendars, shifts...)
- Dynamic event audit trail
- Remote stand alone device battery status report
- Expiry date renovation

How does it work?

The SALTO XS4 RFID data on card system uses SALTO Virtual Network (SVN) technology to convert a stand alone access control system into a networked system. Simply by using the RFID card on the network you distribute all the latest

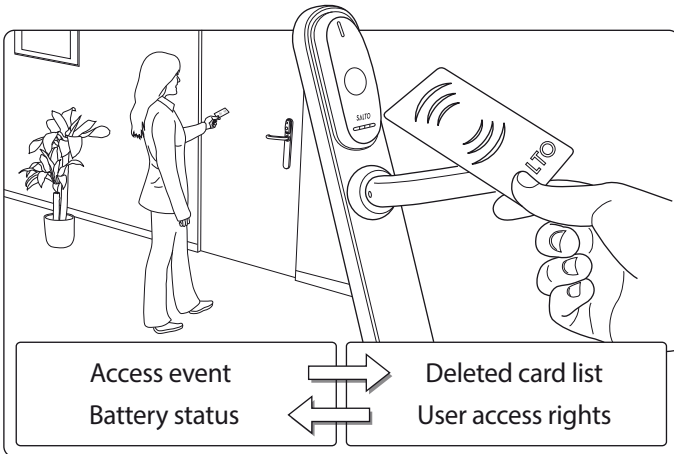
access information to the off-line stand alone locks, including the data on deleted cards, while at the same time it picks up lock/cylinder data like opening events and battery status.

SVN does this for every employee in the building. So whether you need to control 6 doors or 64,000 doors and no matter how many people need to access the building, SVN ensures all the hot spots and locks are kept updated and secure.

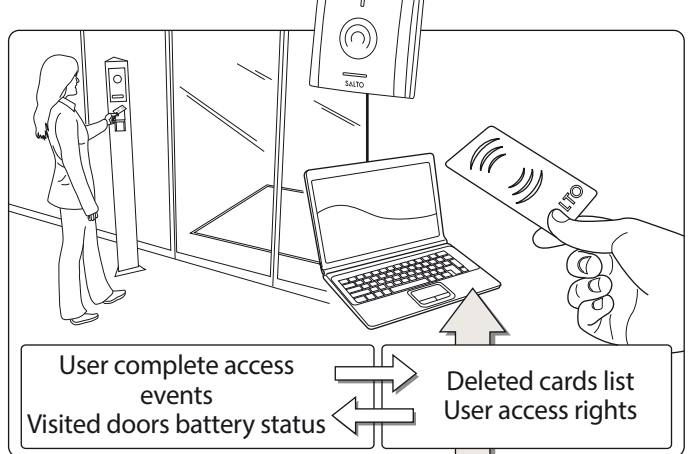
This provides the security or building manager with what they need most – total control.

To learn more about the SALTO Virtual Network visit: www.dataoncard.net

Access to off-line point - Sarahs office room



Access to on-line point the exit doors



- Add or delete users remotely
- Update users profile "on the fly" (Calendars, shifts...)
- Dynamic event audit trail
- Remote stand alone device battery status report

Main features and advantages

- Wire free and battery powered, no complicated installation is required and the existing mortise lock can be retained reducing the installation cost.
- SALTO Virtual Network capabilities in all the locks.
- Computer managed on-line and off-line doors with SQL data base and a huge number of functions and capabilities.
- Up to 4,000,000 users and 64,000 doors in one unique system.
- 256 time zones and 256 calendars.
- 1000 door events held in the lock / cylinder memory.
- Emergency openings can be performed through the PPD.
- Multiplication through the RFID carrier enables use of existing MIFARE/DESFIRE, HID iCLASS or PICOPASS cards.



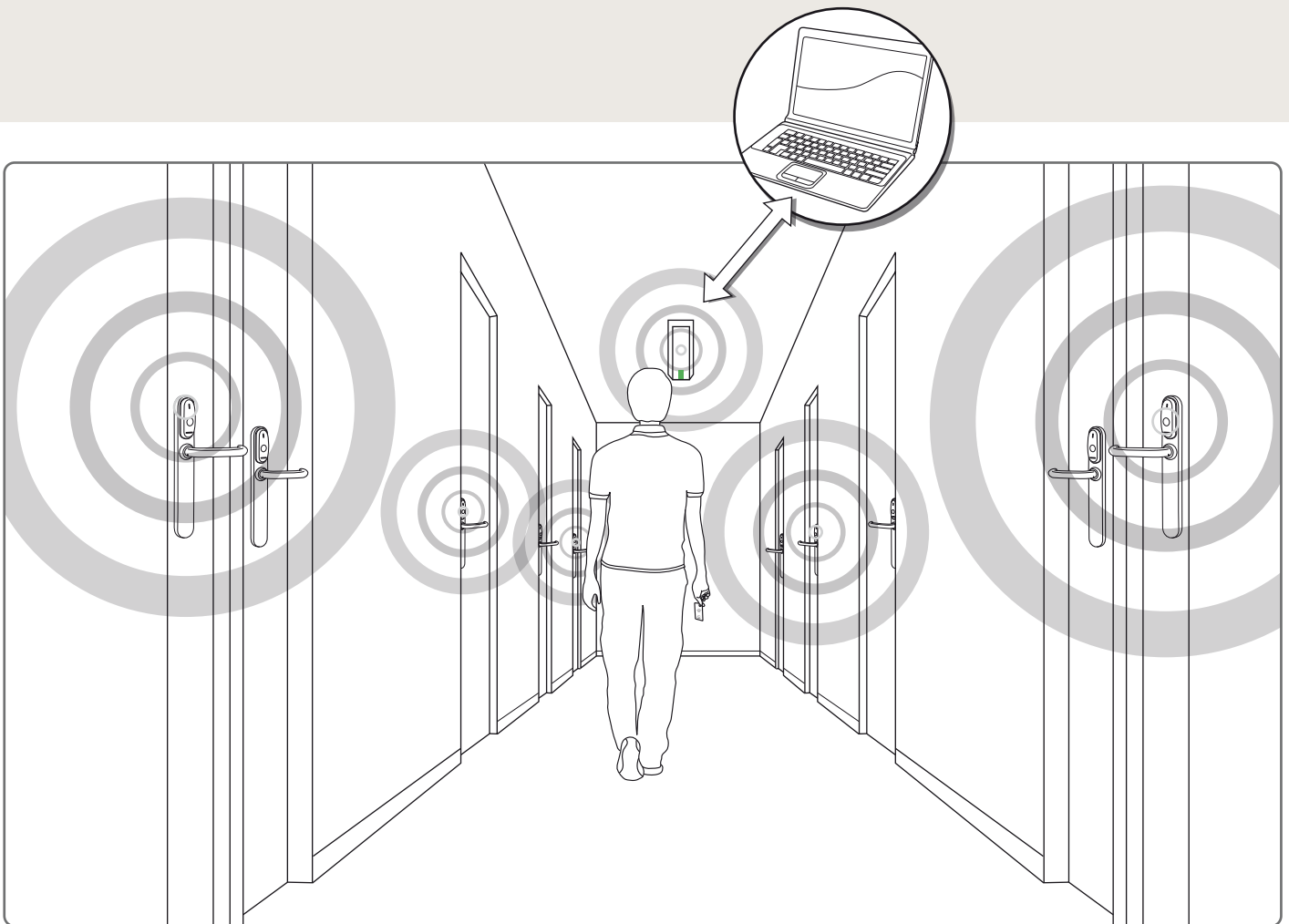
On-Line wireless locking system

The brand new XS4 on-line wireless solution is the next step in battery operated access control. It is designed for use in low consumption applications by businesses that need the latest in high level real time access control without the need for wiring, and perfectly compliments SALTO Virtual Network (SVN) and hardwired IP solutions.

How does it work??

XS4 RF is a new generation on line access control system that is on-line but also off-line. It connects battery powered electronic escutcheons by means of low power radio transceivers (2.4 GHz) fitted on the inside of the escutcheons. These interact with XS4 gateways (which are connected by Ethernet/WIFI to the central management computer) and XS4 nodes fitted in pre-defined XS4 RF areas to provide a real time wireless access control network.

It can also carry out many of the functions that were previously done using a Portable Programming Device (PPD) or SALTO Virtual Network (SVN) and in the unlikely event that the radio link is interrupted, the escutcheons will continue to work but off-line, as with a standard SALTO escutcheon and all standard SVN functions will remain operative.



Main features and advantages

- Easy installation with a SALTO certified technician only needed to set up the XS4 RF parameters.
- Each Gateway/node can control many XS4 on line locks, optimizing the cost/benefit relationship.
- Key management can be resolved in real time with a simple mouse click. XS4 RF sends the black list information to all the locks in real time.
- Real time audit trail means viewing door access in real time without having to visit the door.
- Real time door control: means viewing door status in real time.
- Real time battery control means maintenance can view power status live on screen.
- Highly secure meets RF IEEE 802.15.4 Standard and is 3DES encrypted.
- Door data changes show door opening mode, zone changes and calendars.
- Supervision of the integrity of the static network enables software to show the status of the gateways and repeaters.

Australian Distributor of **SALTO**
inspiredaccess



ACN 002 420 840 | ABN 17 002 420 840

Head Office & Factory – NSW

17 Doyle Ave, Unanderra NSW 2526

Ph: 02 4272 4922 **Fax:** 02 4272 4677

Email: sales@australianlock.com.au **Web:** www.australianlock.com.au

ALCO NZ Limited – New Zealand

PO Box 47129, Trentham, Upper Hutt NZ

Mob: +64 272 875 625 **Fax:** +64 4970 2355

Email: peterh@alco.co.nz **Web:** www.alco.co.nz

QLD – Paralock Pty Ltd (Manufacturer's Distributor)

14 Weston Dr, Bunya QLD 4055

Mob: 0402 108 408

