



On the cutting edge:  
**InnoTech Atira drawer system**

Key aspects at a glance

## InnoTech Atira: On the cutting edge

InnoTech Atira is the drawer system for individualists. Its clean, defined contours are a charismatic design statement in the kitchen and in all living areas:

- ▶ Striking, versatile and flexible
- ▶ Attractive variety of colours
- ▶ Various add on elements create attractive design features
- ▶ Modular solution for individually tailored interior organisation

Show that you have the edge – with the exceptional Atira drawer system.



# InnoTech Atira platform concept:

## One drawer side profile for all options

Would you like to be on the market with a broad range of furniture? And yet still produce in a lean and cost efficient manner? If so, InnoTech Atira is the perfect drawer system for you. Because all drawer and pull-out versions are based on one single drawer side profile. Low complexity makes InnoTech Atira particularly cost effective:

- ▶ Lean, flexible production
- ▶ Low costs in production and stock keeping
- ▶ Broad product range, thousands of ways to differentiate

The InnoTech Atira platform concept gives you an infinite choice of functionality and design options in return for little cost and effort.



Pot-and-pan drawer  
with double railing,  
height 176 mm



Pot-and-pan drawer with  
railing and metal TopSide,  
height 176 mm



Pot-and-pan drawer with  
railing, height 176 mm



Pot-and-pan drawer with  
railing and glass TopSide,  
height 176 mm



Pot-and-pan drawer with  
railing, height 144 mm



Base = drawer side profile,  
height 70 mm



Pot-and-pan drawer with  
railing and TopSide in metal,  
height 144 mm



Pot-and-pan drawer with  
railing and TopSide in glass,  
height 144 mm

50 kg

### Full extension runner

Quadro V6+ with Push to open  
Quadro V6+ with Silent System



30 kg

### Full extension runner

Quadro V6 with Push to open  
Quadro V6 with Silent System









**InnoTech Atira design flexibility:**  
Striking design. More options.







## InnoTech Atira interior organisation: Versatile and flexible

- ▶ Outside: clean cut lines
- ▶ Inside: clear structure
- ▶ Practical details and functions
- ▶ Perfect organisation and use of storage space







# InnoTech Atira system based range:

Boundless potential for differentiation

Drawer side profile height

70 mm



176 mm



144 mm

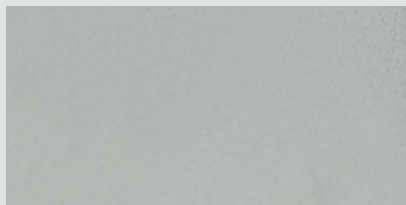
Rear panel heights



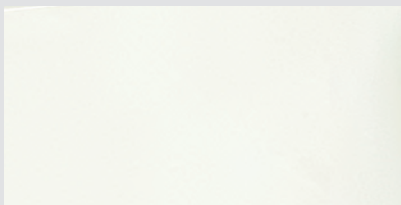
70 mm



## Surface colours

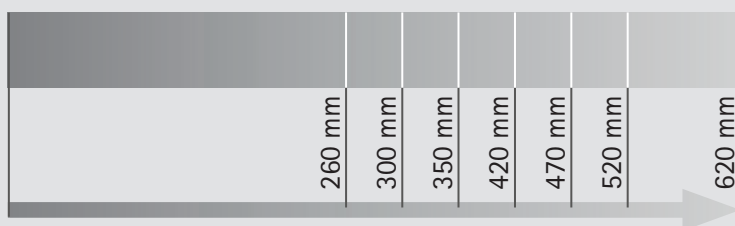


silver

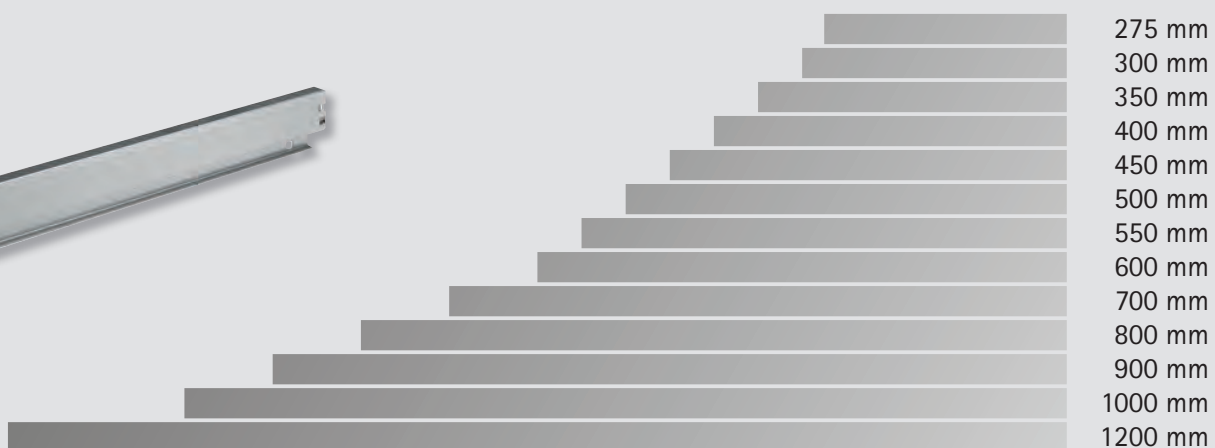
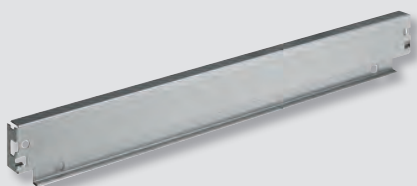


white

## Drawer side profile lengths



## Carcase widths



30 kg

50 kg

## Full extension runner



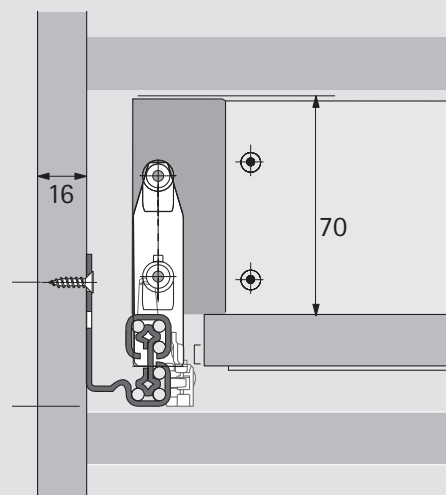
Quadro V6 with Silent System  
Quadro V6 with Push to open

## Full extension runner



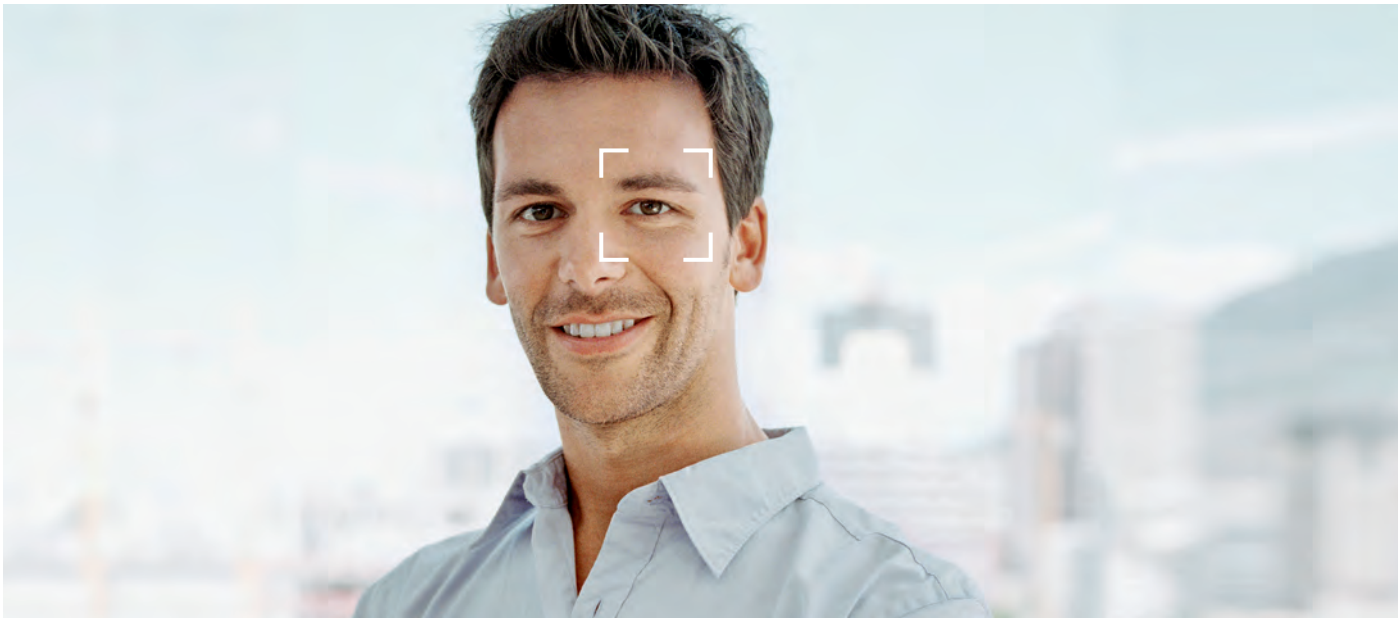
Quadro V6+ with Silent System  
Quadro V6+ with Push to open

- Runners in two load categories:  
30 and 50 kg
- No need to alter drawer dimensions for  
different carcass side thicknesses (KD)
- Railing holes already provided  
in the front panel can be used for TopSide
- Easy to swap and change:  
identical hole positions in the carcass are  
possible for the same drawer side profile













# Assembling and adjusting InnoTech Atira:

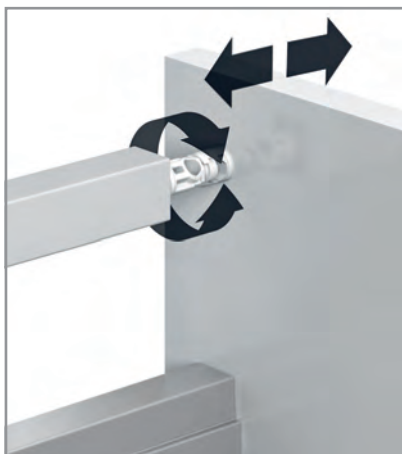
Convenience from the word go



Side adjustment  
 $\pm 1.5$  mm



Height adjustment  
 $\pm 2$  mm



Tilt adjustment  
in conjunction with  
railing



Tool-less  
assembly ...



... and removal of the  
front panels



Easy to fit:  
place on runners  
and slide in



Fast removal

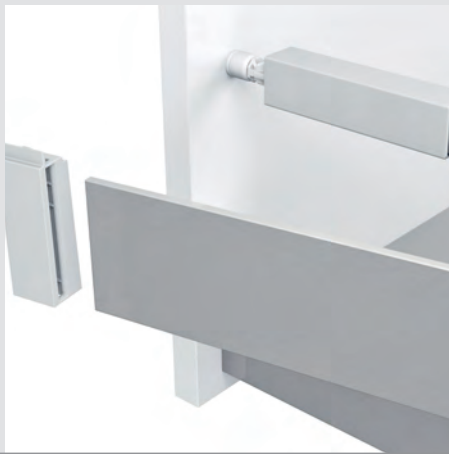
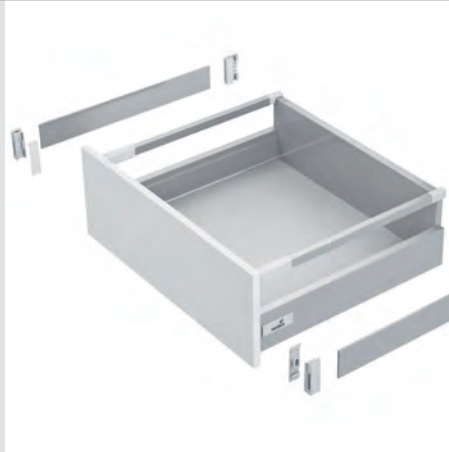
## InnoTech Atira:

Change designs with minimum effort

### TopSide under the railing

#### Installation/removal

- Push back railing adapter
- Hook rear TopSide adapter onto rear panel
- Slide in TopSide
- Push on front TopSide adapter
- Position TopSide underneath the railing and fix in place by means of clip
- Move railing adapter up to the front panel





## InnoTech Atira: Accessories and add ons



### Electromechanical opening system

#### Easys

- Gentle opening in response to a light press
- Greatest possible design flexibility
- Space saving: with shallow installed depth with no loss of storage space
- Suitable for all depths and widths
- Extremely short opening movement
- Suitable for carcasses with and without sealing lip



Purist, handleless design can be created with Easys. Perfect for a look of perfection – also for large, heavy pull-outs.



Space saving and with a shallow installed depth, the electromechanical opening system discreetly disappears behind the drawer's rear panel.



An optional cable avoids collisions in face angle applications.



Easys can be used in a variety of applications: for InnoTech, InnoTech Atira and ArciTech ... even for wooden drawers and pull-out for sink units.



Mechanical opening system  
**Push to open**

- Opening in response to a light press
- For handleless furniture design and practical convenience
- Easy assembly without cables or additional components. Only the runner is replaced.



## InnoTech Atira: benefits at a glance

Design with clearly defined contours

Huge creative potential

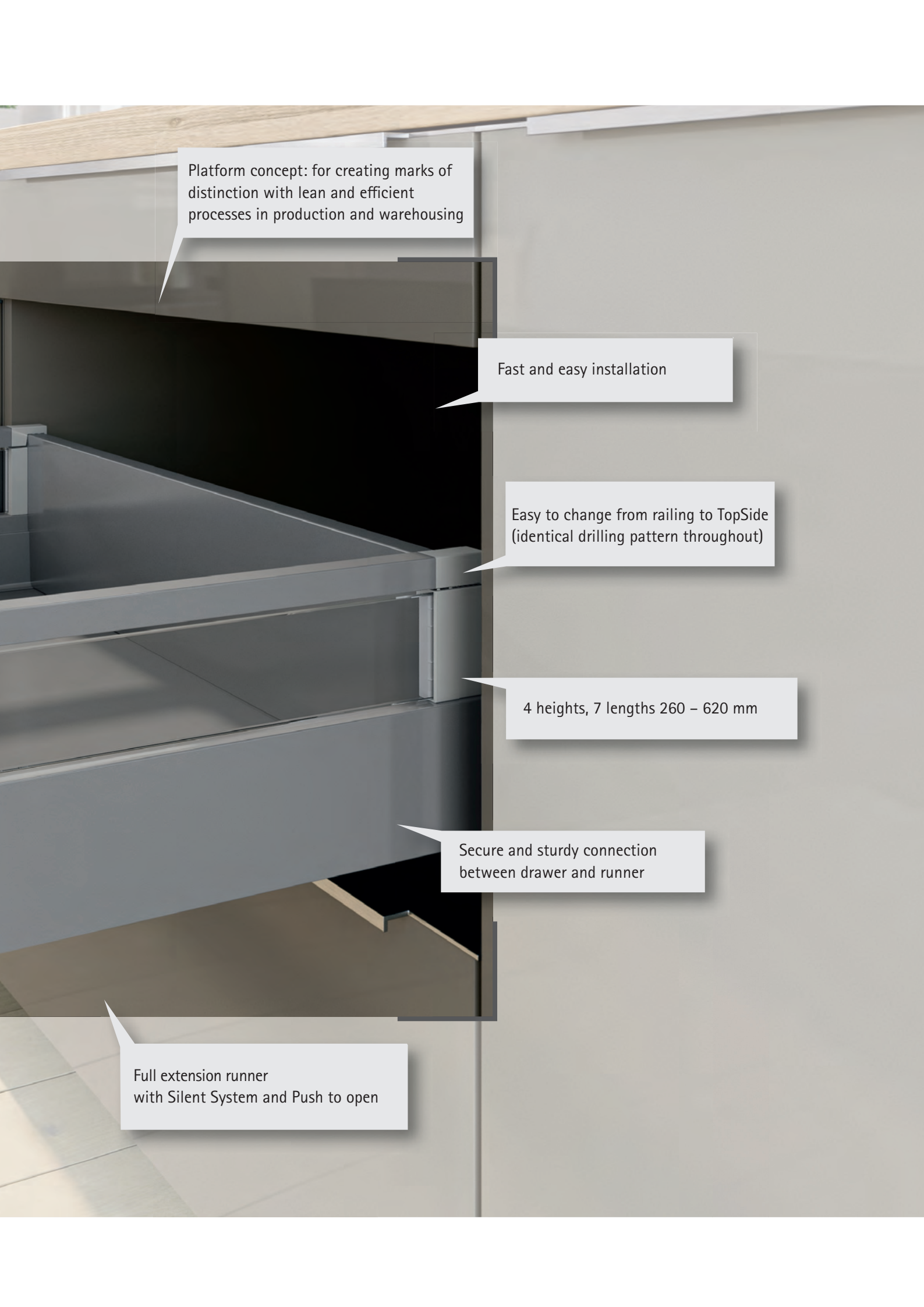
Consistent colour concept with  
matching components

Individual design with internal front panels,  
TopSides below the railing.

Quadro runner:  
great performance,  
perfect reveal alignment

**Hettich**





Platform concept: for creating marks of distinction with lean and efficient processes in production and warehousing

Fast and easy installation

Easy to change from railing to TopSide  
(identical drilling pattern throughout)

4 heights, 7 lengths 260 – 620 mm

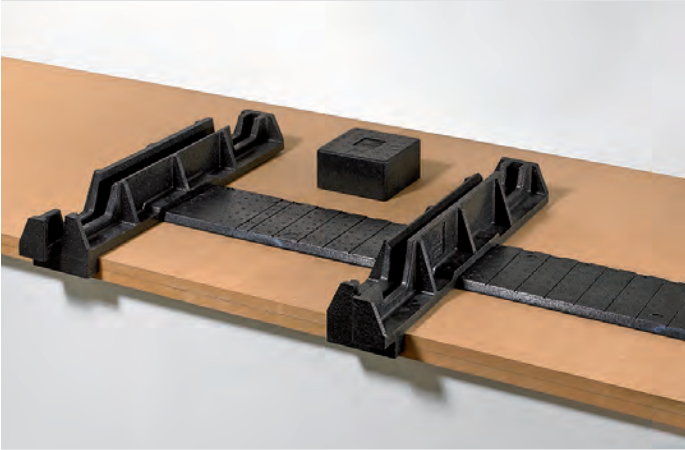
Secure and sturdy connection  
between drawer and runner

Full extension runner  
with Silent System and Push to open

## InnoTech Atira:

### Assembly aids

#### InnoFit 100



- Simple fixture
- Manual assembly
- Efficiency: up to 15 drawers an hour

#### InnoFit 200



- Sturdy frame
- Manual assembly
- Efficiency: up to 40 drawers an hour

## InnoFit 300



- Semi automatic
- Manual component positioning
- Drawer side profile and bottom panel pressed together pneumatically
- Efficiency: up to 65 drawers an hour

## InnoFit 400



- Automatic assembly/installation machine
- Automatic component positioning
- Components pressed together electropneumatically
- Efficiency: up to 100 drawers an hour



[www.hettich.com](http://www.hettich.com)

1510-054\_InnoTech Aira\_0216\_HAU/en

Technik für Möbel

