

momo  
handles







momo  
premium

---

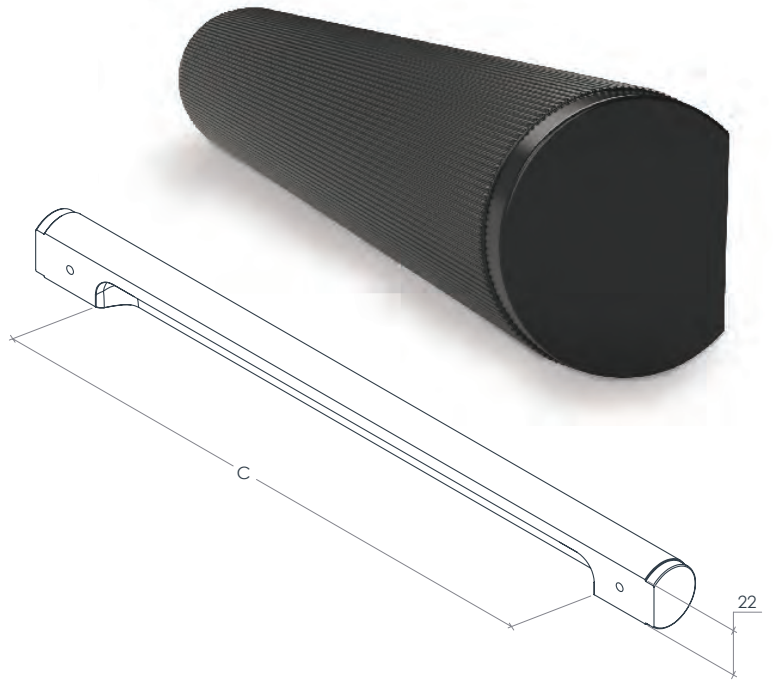
## *Premium Range*

Momo Premium brings together a high-end collection of cabinet handles designed in-house. Available exclusive to Momo Handles, our Premium collection brings the very best in style to the discerning consumer.

## Our in-house design capabilities

Design aesthetics, beauty and quality are paramount to the Momo Handles brand and new product development is at the forefront of our vision for the brand. Therefore, Momo has invested heavily in people and technology to ensure we can bring our design concepts to life and to the market quickly.

The formation of the Momo product design team, that consists of industrial designers and industry professionals, work with local and international partners to conceptualise and bring the best, unique handle designs to the Momo collection.



*With 5 new signature finishes to choose from!*



### Brushed Satin Brass

Our Brushed Satin Brass is a natural brass finish with a subtle brushed texture that is characteristic of solid brass. Coated only in a clear lacquer for protection, allowing the true beauty of the natural brass material to shine.



### Dark Brushed Brass

Our Dark Brushed Brass is an aged brass finish with a heavier brushed texture for a beautiful finish that truly enhances the finest joinery.



### Bronze

Our Bronze finish is warm and takes on a rich elegant hue, it works exceptionally well with the knurled and lined finishes. A stunning finish for the finest interiors.



### Matt Black

Our Matt Black finish is a beautiful, soft matt finish that subtly reflects the light to enhance the various textures.



### Dull Brushed Nickel

Our Dull Brushed Nickel is a classic finish that brings the stainless-steel look in a premium styling to the finest joinery.



# BELLEVUE





A classic and stylish range including bar handles and a complementary knob with optional backplates available throughout the collection. Featuring a 5mm stepped end, square posts on the bar pulls and the option of a knurled or plain texture, make Bellevue a timeless design for all interior settings. The inclusion of a stunning appliance pull completes the set.



Brushed Satin Brass (BSB)



Dark Brushed Brass (DBB)



Bronze (BNZ)



Matt Black (MBL)



Dull Brushed Nickel (DBR)

Description	Plain	Knurled	Finish					Backplate				
				o o	< >	∧	↳		o o	< >	∧	↳
Round Knob	BVKPLO35	BVKKNO35	BSB, DBB, BNZ, MBL, DBR	-	35∅	35∅	36	BVPLBP035	-	35∅	35∅	3
160 <sub>mm</sub> Bar Pull	BVPPL160	BVPKN160	BSB, DBB, BNZ, MBL, DBR	160	200	14	36	BVPLBP160	160	200	16	3
320 <sub>mm</sub> Bar Pull	BVPPL320	BVPKN320	BSB, DBB, BNZ, MBL, DBR	320	370	14	36	BVPLBP320	320	370	16	3
Appliance Pull	BVAPPL416	BVAPKN416	BSB, DBB, BNZ, MBL, DBR	416	496	20	50	BVPLBP416	416	496	18	3

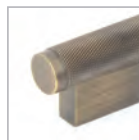
Symbol key: o o = Hole centre < > = Overall length ∧ = Width ↳ = Projection ∅ = Diameter



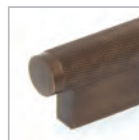
A re-imagined take on a classic, this range includes bar handles and a complimentary T-knob in an impressive knurled texture. Featuring a 5mm stepped end, and a solid base continuing the width of the handle, Brighton sets a commanding design for premium joinery.



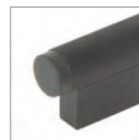
Brushed Satin Brass (BSB)



Dark Brushed Brass (DBB)



Bronze (BNZ)



Matt Black (MBL)



Dull Brushed Nickel (DBR)

Description	Part no.	Finish	∅	< >	∧	↳
T Knob	BSPKN050	BSB, DBB, BNZ, MBL, DBR	-	50	16	31
160 <sub>mm</sub> Pull Handle	BSPKN160	BSB, DBB, BNZ, MBL, DBR	160	200	16	31
320 <sub>mm</sub> Pull Handle	BSPKN320	BSB, DBB, BNZ, MBL, DBR	320	360	16	31



# BRIGHTON





BELGRAVIA





Designed and crafted to exacting standards, the exquisite solid brass Belgravia range with knurled detailing is perfectly at home in the most impressive interiors.



Brushed Satin Brass (BSB)    Dark Brushed Brass (DBB)    Bronze (BNZ)    Matt Black (MBL)    Dull Brushed Nickel (DBR)    Polished Nickel (PN)

Description	Part no.	Finish	o o	< >	∧	↳
Round Knob	BLG035	BSB, DBB, BNZ, MBL, DBR, PN	-	35∅	-	38
T Knob	BLG082	BSB, DBB, BNZ, MBL, DBR, PN	-	82	-	38
160 <sub>mm</sub> Bar Pull	BLG160	BSB, DBB, BNZ, MBL, DBR, PN	160	241	-	38
320 <sub>mm</sub> Bar Pull	BLG320	BSB, DBB, BNZ, MBL, DBR, PN	320	404	-	38

Symbol key: o o = Hole centre < > = Overall length ∧ = Width ↳ = Projection ∅ = Diameter



An eye-catching piece enveloped in a luxurious, lined texture and featuring a 5mm stepped end. The handle section is hidden which preserves the elegant aesthetic of its striking cylindrical design. It can also be accompanied by the Sussex knob, a striking contemporary knob with a bold presence and lined texture, to allow for a diverse range of applications.



Brushed Satin Brass (BSB)



Dark Brushed Brass (DBB)



Bronze (BNZ)



Matt Black (MBL)



Dull Brushed Nickel (DBR)

Description	Part no.	Finish	∅∅	< >	∧	↳
160 <sub>mm</sub> Pull Handle	MSPLN160	BSB, DBB, BNZ, MBL, DBR	160	200	30	25
320 <sub>mm</sub> Pull Handle	MSPLN320	BSB, DBB, BNZ, MBL, DBR	320	360	30	25
Sussex Knob	SRKL035	BSB, DBB, BNZ, MBL, DBR	-	35∅	35∅	30



# MANHATTAN & SUSSEX





# ASPEN

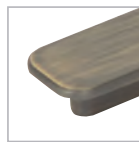




A truly classic design with an easy nature, it features a subtle stepped edge framing a distinct flat face that captures the light perfectly. Aspen has a gentle presence making it widely adaptable and has a contoured underside for a comfortable hold.



Brushed Satin Brass (BSB)



Dark Brushed Brass (DBB)



Bronze (BNZ)



Matt Black (MBL)



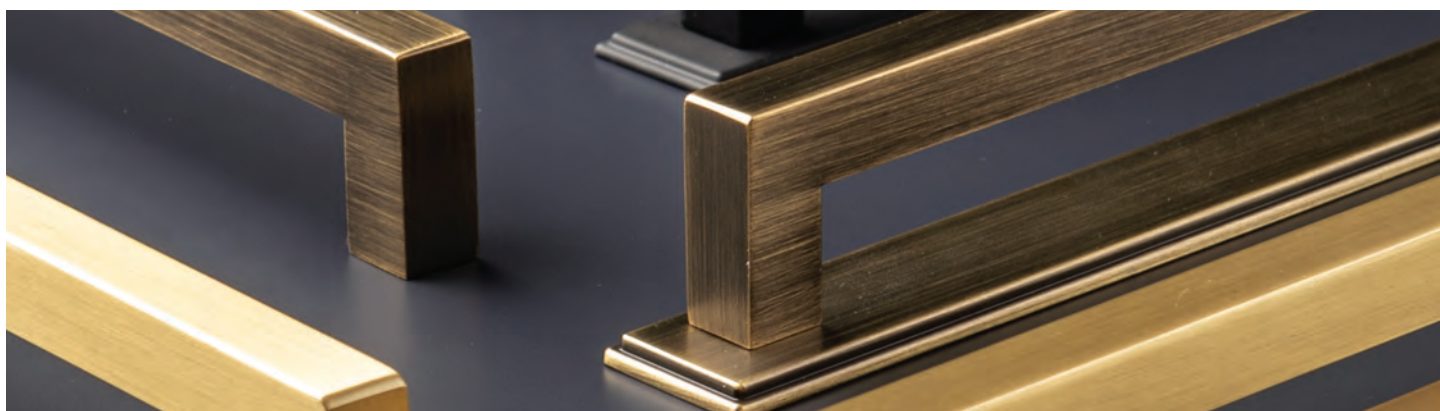
Dull Brushed Nickel (DBR)

Description	Part no.	Finish	○ ○	< >	∧	↳
Knob	ASK040	BSB, DBB, BNZ, MBL, DBR	-	40	30	20
160 <sub>mm</sub> Pull Handle	ASPH160	BSB, DBB, BNZ, MBL, DBR	160	200	30	20
320 <sub>mm</sub> Pull Handle	ASPH320	BSB, DBB, BNZ, MBL, DBR	320	360	30	20

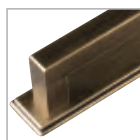
Symbol key: ○ ○ = Hole centre < > = Overall length ∧ = Width ↳ = Projection ∅ = Diameter



Designed in-house and exclusive to Momo Handles, the Liberty Bar Handle is a striking design and can be used with or without the backplate to suit a wide variety of cabinetry styles. Available in two sizes and five finishes. Also pairs nicely with the New Hampton Round Knob - see page 49



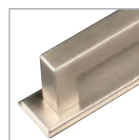
Matt Brass (MBR)



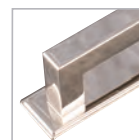
Dark Brushed Brass (DBB)



Matt Black (MBL)



Dull Brushed Nickel (DBR)

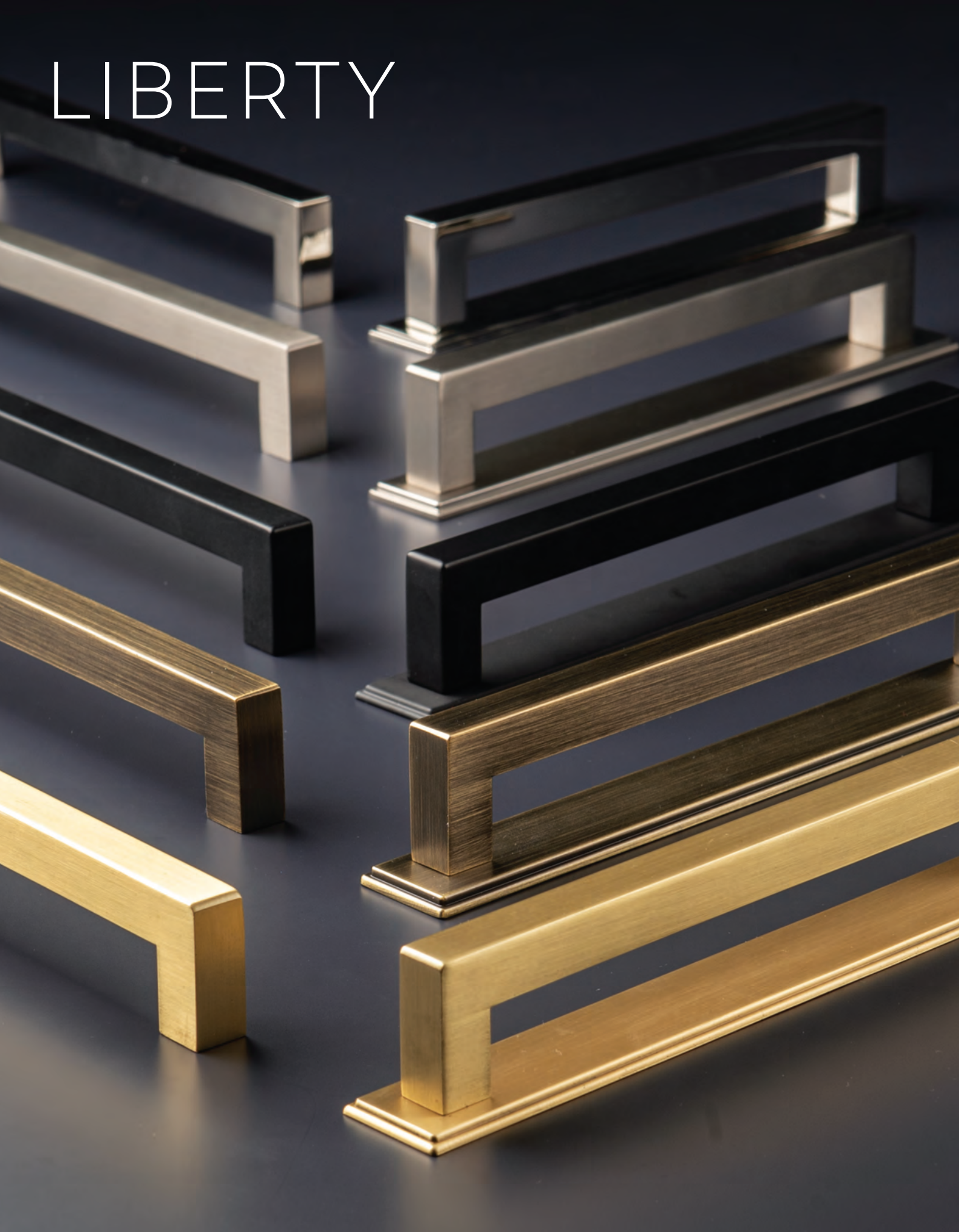


Polished Nickel (PN)

Description	Part no.	Finish	160	171	11	30
160 <sub>mm</sub> Bar Handle	LBH160	MBR, MBL, DBB, DBR, PN	160	171	11	30
320 <sub>mm</sub> Bar Handle	LBH320	MBR, MBL, DBB, DBR, PN	320	333	11	30
160 <sub>mm</sub> Backplate	LBHBP160N	MBR, MBL, DBB, DBR, PN	160	190	25	4
320 <sub>mm</sub> Backplate	LBHBP320	MBR, MBL, DBB, DBR, PN	320	350	25	4



# LIBERTY



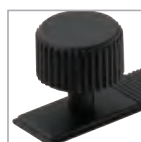
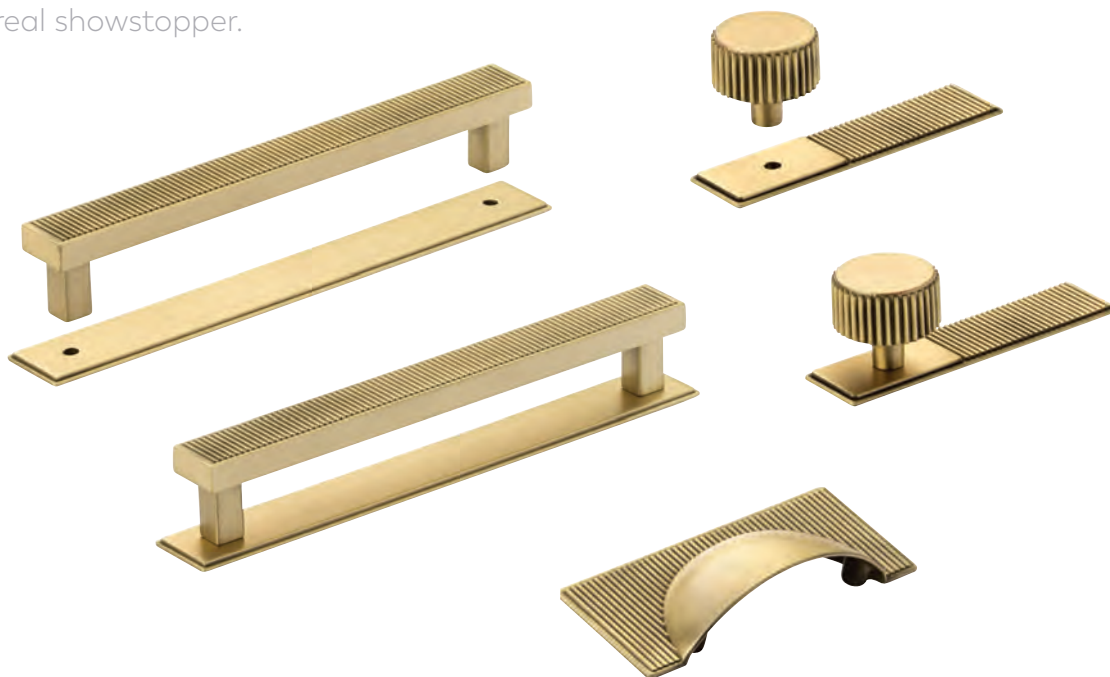


BARRINGTON

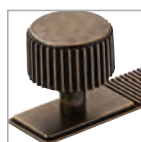




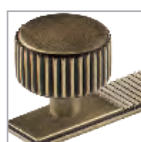
Designed in-house and exclusive to Momo Handles. This signature collection features a stunning ribbed texture, taking elements of inspiration from Art Deco design. With its bold industrial flair and fine details this range is a real showstopper.



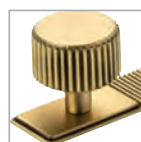
Matt Black (MBL)



Bronze (BNZ)



Dark Brushed Brass (DBB)



Matt Brass (MBR)

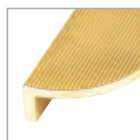
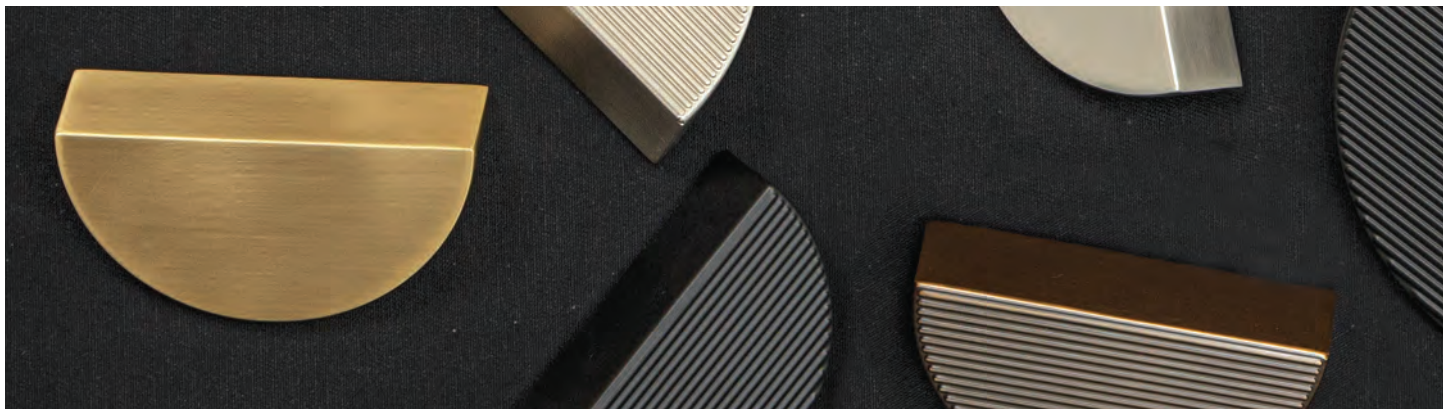


Polished Nickel (PN)

Description	Part No.	Finish	Cup Pull				Backplate	Knob			
			o o	< >	∧	↳		o o	< >	∧	↳
Cup Pull	BCPO64	MBL, BNZ, DBB, MBR, PN	64	105	45	24	-	-	-	-	-
Knob	BRK032	MBL, BNZ, DBB, MBR, PN	-	32∅	-	30	BRKBP032	-	100	25	4
160 <sub>mm</sub> Bar Handle	BBH160	MBL, BNZ, DBB, MBR, PN	160	179	20	29	BBHBP160	160	190	25	4
320 <sub>mm</sub> Bar Handle	BBH320	MBL, BNZ, DBB, MBR, PN	320	339	20	29	BBHBP320	320	350	25	4

Symbol key: o o = Hole centre < > = Overall length ∧ = Width ↳ = Projection ∅ = Diameter

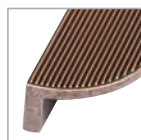
Designed in-house and exclusive to Momo Handles, the Barrington Eclipse is a stunning half-moon shaped handle available with a flat or ribbed face, that when mounted side by side forms a full circle for even greater impact.



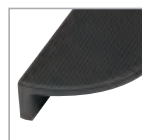
Matt Brass (MBR)



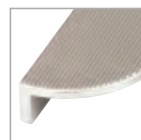
Dark Brushed Brass (DBB)



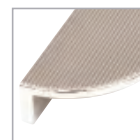
Bronze (BNZ)



Matt Black (MBL)



Dull Brushed Nickel (DBR)

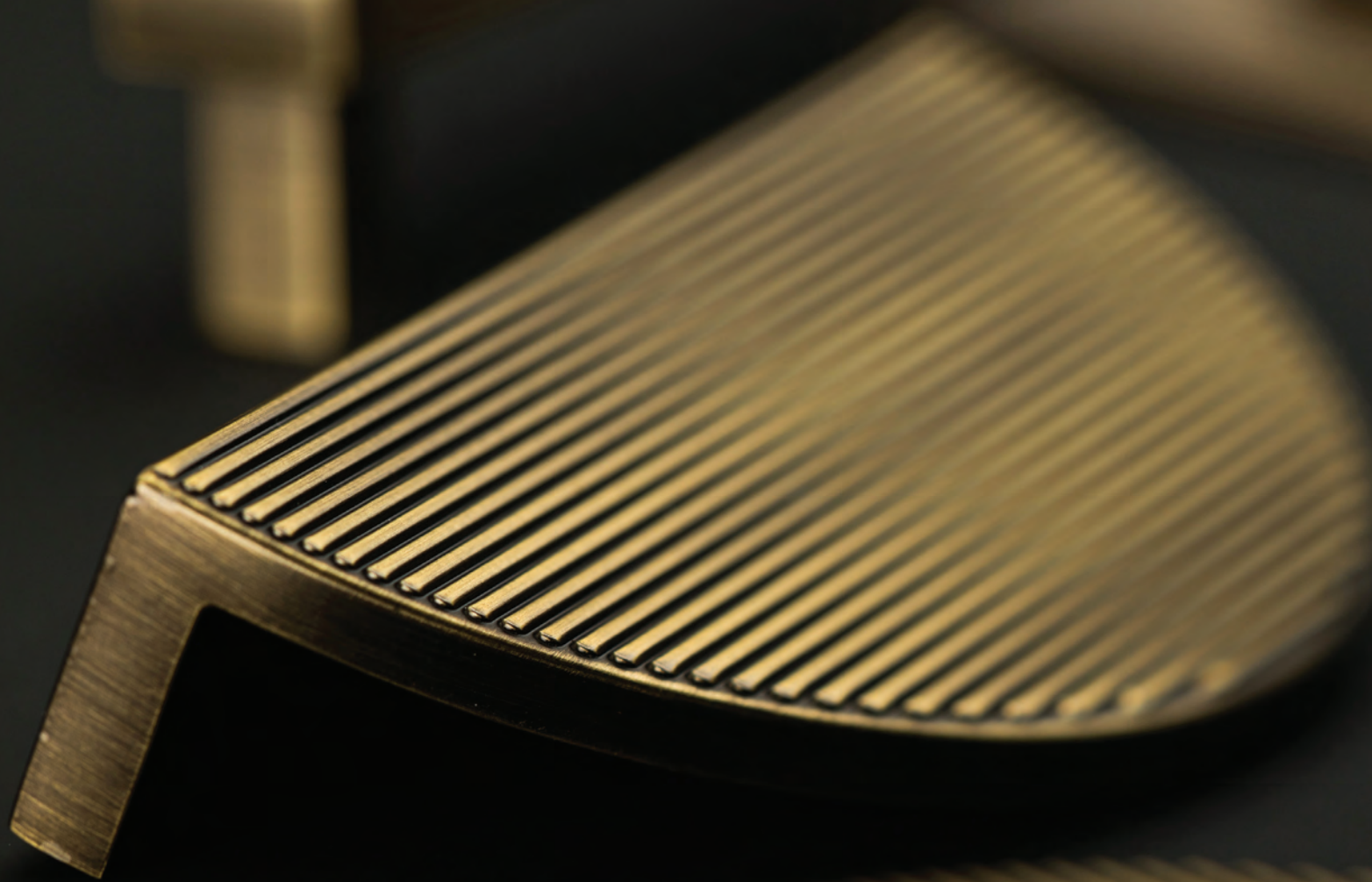


Polished Nickel (PN)

Description	Part No.	Finish	oo	<>	∧	▶
Small Ribbed	BERB64	MBR, DBB, BNZ, MBL, DBR, PN	64	80	40	25
Small Plain	BEPL64	MBR, DBB, BNZ, MBL, DBR, PN	64	80	40	25
Large Ribbed	BERB96	MBR, DBB, BNZ, MBL, DBR, PN	96	110	55	25
Large Plain	BEPL96	MBR, DBB, BNZ, MBL, DBR, PN	96	110	55	25



# BARRINGTON ECLIPSE





PEMBREY





Exclusively designed by our in-house Momo designers, this timeless collection adapts easily to a traditional or modern style, seamlessly perfect on modern slab or shaker door applications.



Dark Brushed Brass (DBB)



Bronze (BNZ)



Matt Black (MBL)



Polished Nickel (PN)

Description	Part No.	Finish	o o	< >	◇	↳
T Knob	PTK080	DBB, BNZ, MBL, PN	-	82	19	38
128 <sub>mm</sub> Bar Handle	PBH128	DBB, BNZ, MBL, PN	128	209	19	38
320 <sub>mm</sub> Bar Handle	PBH320	DBB, BNZ, MBL, PN	320	400	19	38

Symbol key: o o = Hole centre < > = Overall length ◇ = Width ↳ = Projection ∅ = Diameter

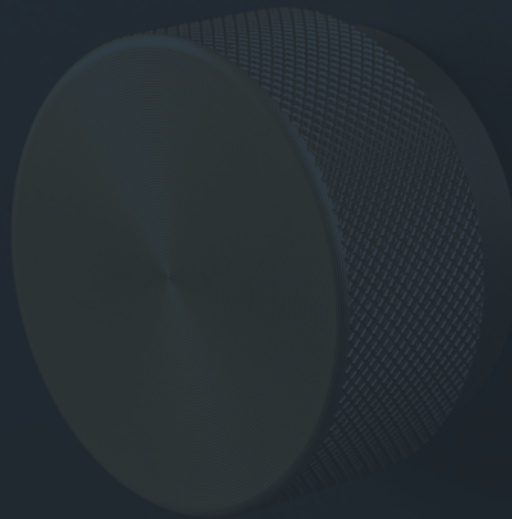


momo  
handles

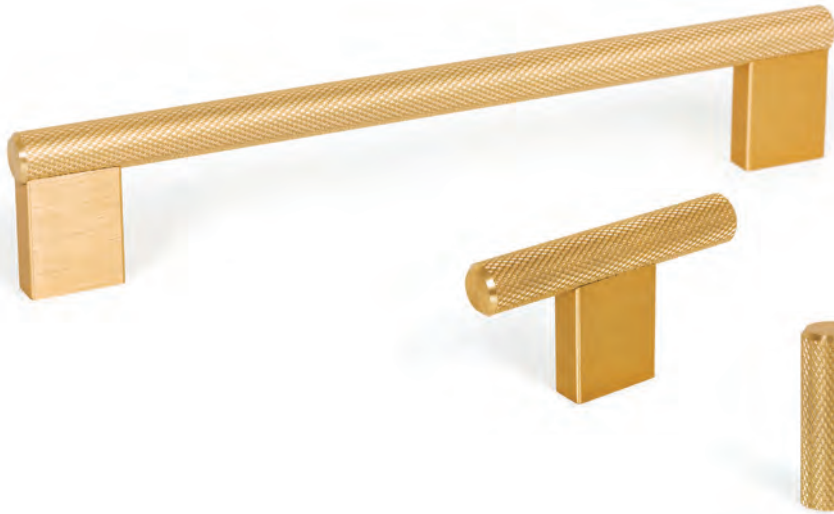
---

## *Designer Range*

Our thoughtfully curated collection of Momo Designer handles brings you a large selection of on-trend styles, sizes and finishes to suit a wide variety of cabinetry and interior styles.

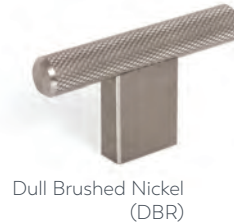


# Graf



Brushed Dark Brass (BDB)

Description	Part no.	Finish	∅	<>	∧	▶
Cylinder	G0430.010	BDB, DBR, BBL	-	-	10	33
T Knob	G0430.060	BDB, DBR, BBL	-	60	10	33
D Handle	G0430.160	BDB, DBR, BBL	160	182	10	33
D Handle	G0430.256	BDB, DBR, BBL	256	278	10	33
D Handle	G0430.1178	BDB, DBR, BBL	1178	1200	10	33



Dull Brushed Nickel (DBR)

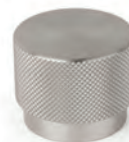


Brushed Black (BBL)

## Graf Round Knob



Brushed Black (BBL)



Dull Brushed Nickel (DBR)



Brushed Dark Brass (BDB)

Part no.	Finish	∅	<>	∧	▶
G0486.038	BBL, DBR, BDB	-	38∅	-	30
G0486.050	BBL, DBR, BDB	-	50∅	-	30



# Arpa

## Contemporary Handle

The symmetrical and straight lined aesthetic of the Arpa handle reminds us of the influences of the art deco style which appeared significantly in the 1920s and which is back in style today. Available in four finishes and four sizes up to 1200mm in length, the Arpa handle incorporates the finest of vertical lines which add elegance and style to many different interiors. Available as a handle alone or with a backplate to add extra flair.



Dull Brushed Nickel (DBR)



Brushed Dark Brass (BDB)



Brushed Black (BBL)



Antique Brass (AB)

Description	Part no.	Finish	o o	< >	∧	↳
T Knob	A0583.070	DBR, BDB, BBL, AB	-	70	14	35
Round Knob	A0583.022	DBR, BDB, BBL, AB	-	22	14	31
192 <sub>mm</sub> D Handle	A0583.192	DBR, BDB, BBL, AB	192	214	14	35
320 <sub>mm</sub> D Handle	A0583.320	DBR, BDB, BBL	320	342	14	35
1178 <sub>mm</sub> D Handle	A0583.1178	DBR, BDB, BBL	1178/589	1200	14	35
T Knob & Backplate	A0588.070	DBR, BDB, BBL, AB	-	70	25	37
Round Knob & Backplate	A0588.022	DBR, BDB, BBL, AB	-	100	25	33
192 <sub>mm</sub> D Handle & Backplate	A0588.192	DBR, BDB, BBL, AB	192	230	25	37
320 <sub>mm</sub> D Handle & Backplate	A0588.320	DBR, BDB, BBL	320	358	25	37
1178 <sub>mm</sub> D Handle & Backplate	A0588.1178	DBR, BDB, BBL	1178/589	1216	25	37

The 1200mm long version has a center post for additional stability.



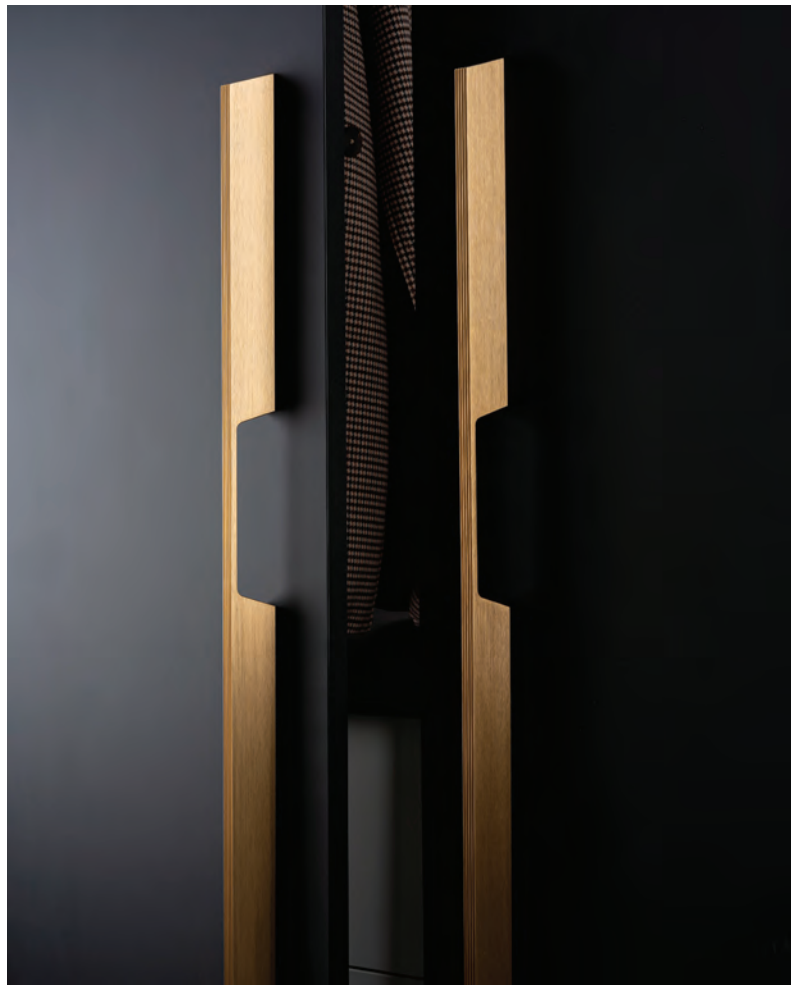


# Rail

Rail gives a sense of personality & modernity to any cabinetry it is fitted to. The 1150mm long has an off-centred cut out so using a left and right hand when used on double doors creates a perfect symmetrical look.



Pictured: Brushed Dark Brass (BB)



Part no.	Finish	◦◦	<>	∧	▶
L0511.160	BB, BBL, SS	160	180	20	32
L0511.192	BB, BBL, SS	192	280	20	32
L0511.576	BB, BBL, SS	192/576	600	20	32
L0511.1120.LEFT	BB, BBL, SS	192/1120	1150	20	32
L0511.1120.RIGHT	BB, BBL, SS	192/1120	1150	20	32

Symbol key: ◦◦ = Hole centre <> = Overall length ∧ = Width ▶ = Projection ∅ = Diameter

# Acuto



Antique Brass (AB)

Part no.	Finish	o o	< >	^ v	↳
ABH160	AB, MWH, DBR, BSB, MBL	160	185	18	42.5
ABH320	AB, MWH, DBR, BSB, MBL	320	345	18	42.5



Matt White (MWH)



Dull Brushed Nickel (DBR)



Brushed Satin Brass (BSB)



Matt Black (MBL)

# Vena



Matt Black (MBL)

Part no.	Finish	o o	< >	^ v	↳
VNK035	MBL, MWH, DBR, BSB	-	35	35	26
VNK050	MBL, MWH, DBR, BSB	-	50	50	26
VDH160	MBL, MWH, DBR, BSB	160	167	18	26
VDH320	MBL, MWH, DBR, BSB	320	327	18	26



Matt White (MWH)



Dull Brushed Nickel (DBR)



Brushed Satin Brass (BSB)

Symbol key: o o = Hole centre < > = Overall length ^ v = Width ↳ = Projection Ø = Diameter



# Flويد



Antique Brass (AB)

Description	Part no.	Finish	oo	<>	^v	↳
Knob	FO4950.35	AB, MBL, PW, BRG	-	35ø	-	30
D Handle	FO495.128	AB, MBL, PW, BRG	128	144	16	31
D Handle	FO495.192	AB, MBL, PW, BRG	192	207	16	31



Matt Black (MBL)



Pewter (PW)



Brushed Gold (BRG)

# Luv



Brushed Nickel (BRN)

Part no.	Finish	oo	<>	^v	↳
L0536.051	BRN, BRG, MWH, MBL	-	51	17.5	31
L0536.192	BRN, BRG, MWH, MBL	192	202	17.5	30
L0536.320	BRN, BRG, MWH, MBL	320	330	17.5	30



Brushed Gold (BRG)



Matt White (MWH)



Matt Black (MBL)

# Roma



Matt Black (MBL)

Part no.	Finish	⊙ ⊙	< >	∧ ∨	↳
R0241.160	MBL, BRG, BRN	160	175	14	30
R0241.320	MBL, BRG, BRN	320	335	14	30



Brushed Gold (BRG)



Brushed Nickel (BRN)

# Sense Mini



Brushed Dark Brass (BDB)

Part no.	Finish	⊙ ⊙	< >	∧ ∨	↳
SM0301.160	BDB, MBL, DBR	160	167	17	30
SM0301.256	BDB, MBL, DBR	256	263	17	30



Matt Black (MBL)



Dull Brushed Nickel (DBR)

Symbol key: ⊙ ⊙ = Hole centre < > = Overall length ∧ ∨ = Width ↳ = Projection ∅ = Diameter



# Brave

## Contemporary Bow Handle

A simple and stylish handle with a subtle curve perfect for contemporary cabinetry. The 992mm version has an off-centred bow for an elegantly dramatic look. Available in 5 sizes and Metallic Golden Brown, Metallic Grey, Matt Black and Matt White.



Part no.	Finish	o o	< >	∧	↳
B0452.128	MTBR, MTC, MBL, MWH	128	160	8	25.5
B0452.192	MTBR, MTC, MBL, MWH	192	240	8	33
B0452.320	MTBR, MTC, MBL, MWH	320	400	8	33
B0452.480	MTBR, MTC, MBL, MWH	480	600	8	33
B0452NC.992	MTBR, MTC, MBL, MWH	192/992	1040	8	33
B0452.1120	MTBR, MTC, MBL, MWH	192/1120	1150	8	33



B0452NC.992 has an off-centred bow







# Ona

## Contemporary Lip Pull

The Ona is a comfortable, minimalist aluminium profile handle whose shape ensures a perfect grip, making it easy to use. The profile is an embedded piece that is easy to install as it is screwed on from the rear, which means that it adapts to different furniture widths. It is ideal on pillars and kitchen islands. Available in a Brushed Black, Brushed Grey, Brushed Nickel and in colours currently trending such as Metallic Grey, Metallic Golden Brown, Brushed Dark Brass and Matt White.



Brushed Black  
(BBL)



Metallic Golden Brown  
(MTBR)



Brushed Grey  
(BRGY)



Metallic Grey  
(MTG)



Dull Brushed Nickel  
(DBR)



Brushed Dark Brass  
(BDB)



Matt White  
(MWH)

Part no.	Finish	o o	< >	^ v	↳
ON0372.032	BBL, BRGY, DBR, MWH, MTBR, MTC, BDB	32	50	18	42
ON0372.128	BBL, BRGY, DBR, MWH, MTBR, MTC, BDB	128	200	18	42
ON0372.256	BBL, BRGY, DBR, MWH, MTBR, MTC, BDB	256	350	18	42
ON0372.544	BBL, BRGY, DBR, MWH, MTBR, MTC, BDB	544	600	18	42
ON0372.1056	BBL, BRGY, DBR, MWH, MTBR, MTC, BDB	1056	1100	18	42





# Vann



Brushed Dark Brass  
(BDB)

Part no.	Finish	o o	< >	^ v	↳
V0375.064	BDB, MBL, DBR	64	100	19.7	44
V0375.128	BDB, MBL, DBR	128	200	19.7	44
V0375.256	BDB, MBL, DBR	256	350	19.7	44
V0375.1120	BDB, MBL, DBR	1120	1200	19.7	44



Matt Black  
(MBL)



Dull Brushed Nickel  
(DBR)

# Noma



Matt Black  
(MBL)

Part no.	Finish	o o	< >	^ v	↳
N0254.128	MBL, BDB, DBR	128	200	17	38
N0254.256	MBL, BDB, DBR	256	350	17	38



Brushed Dark Brass  
(BDB)



Dull Brushed Nickel  
(DBR)

# Sola

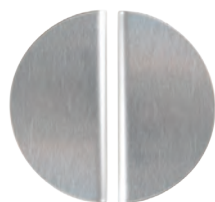
Sola, the latest addition to Momo Handles, is a bold and striking lip pull handle in a half-moon shape that perfectly complements contemporary cabinetry. Forming a full circle when mounted side-by-side, Sola is available in 4 sizes and 4 finishes and simply screws to the rear of the door or drawer.



Pictured: Brushed Brass (BB)



White  
(WH)



Stainless Steel  
(SS)



Matt Black  
(MBL)



Part no.	Finish	o o	< >	∧ ∨	↳
FHR080	BB, WH, SS, MBL	60	80	40	35
FHR120	BB, WH, SS, MBL	100	120	60	35
FHR160	BB, WH, SS, MBL	140	160	80	35
FHR240	BB, WH, SS, MBL	220	240	120	35

Symbol key: o o = Hole centre < > = Overall length ∧ ∨ = Width ↳ = Projection ∅ = Diameter



# Flapp Aluminium

The Flapp collection is a sleek and minimalist handle available in 4 lengths up to 1100mm long, perfect for larger doors and this design looks equally as good either running vertically or horizontally.



Pictured: Brushed Dark Brass (BDB)



Dull Brushed Nickel (DBR)



Brushed Black (BBL)



Part no.	Finish	o o	< >	∧	↳
FPH070	BDB, DBR, BBL	32	70	22	23.2
FPH128	BDB, DBR, BBL	128	200	22	23.2
FPH256	BDB, DBR, BBL	256	350	22	23.2
FPH1056	BDB, DBR, BBL	1056	1100	22	23.2

# Flapp Timber

The Flapp Timber collection is a sleek and minimalist handle available in 3 lengths up to 1100mm long, perfect for larger doors and this design looks equally as good either running vertically or horizontally.



Pictured: Brushed Walnut (WN)



Oak  
(OAK)



Part no.	Finish	o o	< >	∧	↳
FPH070	WN, OAK	32	70	22	23.2
FPH128	WN, OAK	128	200	22	23.2
FPH1056	WN, OAK	1056	1100	22	23.2

Symbol key: o o = Hole centre < > = Overall length ∧ = Width ↳ = Projection ∅ = Diameter



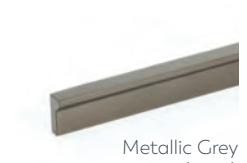
# Angle

## Contemporary Pull Handle

The Angle handle is made with an aluminium profile, characterised by its straight lines and its wedge-shaped front, which lends it a timeless look that can be combined with all current furnishing trends. Its design and many different sizes are so practical and versatile that they can be fitted on a diverse range of cabinetry.



Matt Black  
(MBL)



Metallic Grey  
(MTG)



Metallic Golden Brown  
(MTBR)



Brushed Dark Brass  
(BDB)



Dull Brushed Nickel  
(DBR)



Matt White  
(MWH)

Part no.	Finish	o o	< >	∧	↳
A0077.64	MBL, MTG, MTBR, BDB, DBR, MWH	64	100	11	20
A0077.128	MBL, MTG, MTBR, BDB, DBR, MWH	128	200	11	20
A0077.192	MBL, MTG, MTBR, BDB, DBR, MWH	192	300	11	20
A0077.480	MBL, MTG, MTBR, BDB, DBR, MWH	480	600	11	20
A0077.640	MBL, MTG, MTBR, BDB, DBR, MWH	640	900	11	20





## Nick



Brushed Matt Brass (BMB)



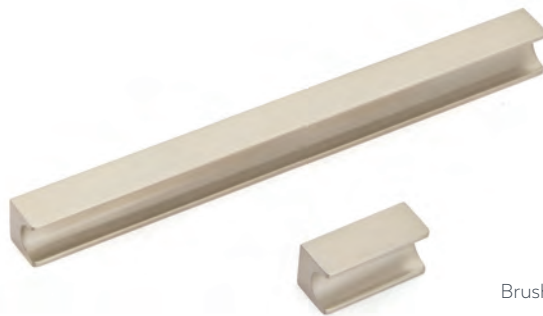
Brushed Nickel (BRN)



Matt Black (MBL)

Part no.	Finish	oo	<>	∧	▶
N0373.032	BMB, BRN, MBL	32	50	13	24
N0373.160	BMB, BRN, MBL	160	178	13	24

## Sirolo



Brushed Nickel (BRN)



Brushed Matt Brass (BMB)

Part no.	Finish	oo	<>	∧	▶
S1700.032	BRN, BMB	32	44	18	21
S1700.160	BRN, BMB	160	172	18	21

## Brikk



Antique Bronze (ABR)



Dull Brushed Nickel (DBR)

Part no.	Finish	oo	<>	∧	▶
B0334.032	ABR, DBR	32	140	14	27
B0334.160	ABR, DBR	160	290	14	27
B0334.192	ABR, DBR	192	490	14	27

## Cutt



Matt Black (MBL)



Dull Brushed Nickel (DBR)

Part no.	Finish	oo	<>	∧	▶
C0322.096	MBL, DBR	96	200	17.5	23
C0322.192	MBL, DBR	192	400	17.5	23
C0322.320	MBL, DBR	320	600	17.5	23

# Switch



Brushed Nickel  
(BRN)

Matt White  
(MWH)

Matt Black  
(MBL)

Part no.	Finish	oo	<>	^	↳
S049.032	BRN, MWH, MBL	32	50	50	26
S049.160	BRN, MWH, MBL	160	200	40	21

# Fold

Recesses into the door or drawer front.



Brushed Gold  
(BRC)



Brushed Nickel  
(BRN)



Matt White  
(MWH)



Matt Black  
(MBL)

Part no.	Finish	oo	<>	^	↳
F0542.128	BRC, BRN, MWH, MBL	128	174	46	15

Symbol key: oo = Hole centre <> = Overall length ^ = Width ↳ = Projection Ø = Diameter



## Ball



Brushed Matt Brass  
(BMB)



Matt Black  
(MBL)



Brushed Nickel  
(BRN)

## Como



Matt Black  
(MBL)



Brushed Nickel  
(BRN)



Brushed Gold  
(BRG)



Matt White  
(MWH)

Part no.	Finish	o o	< >	∧	↳
B0374.024	BMB, MBL, BRN	-	23.3	15	22.8
B0374.029	BMB, MBL, BRN	-	29.5	19	28.8

Part no.	Finish	o o	< >	∧	↳
C0168.026	MBL, BRN, BRG, MWH	-	26∅	-	18
C0168.041	MBL, BRN, BRG, MWH	-	41∅	-	25

## Bau



Matt Black  
(MBL)



Brushed Nickel  
(BRN)



Brushed Gold  
(BRG)

## Bol



Matt Black and Sapelli  
(MBLSP)



Matt Black and Beech  
(MBLBCH)

Part no.	Finish	o o	< >	∧	↳
B0496.90	MBL, BRN, BRG	64	90∅	-	17

Part no.	Finish	o o	< >	∧	↳
B0489.45	MBLSP, MBLBCH	-	45∅	-	31

# Flexa

The leather Flexa range, gives a warm, organic touch to whatever piece of cabinetry it may be fitted to. Available in three leather colours and the option of Brass and Pewter buttons.

Brass Button



Dark Brown with Pewter Button (DBPW)

Pictured: Dark Brown with Brass Button (DBBB)



Light Tan with Brass Button (LTBB)



Light Tan with Pewter Button (LTPW)



Black with Brass Button (BLBB)



Black with Pewter Button (BLPW)



Part no.	Finish	o o	< >	◇	▶
F0404.070	BLBB, BLPW, LTBB, LTPW, DBBB, DBPW	-	22	70	24
F0404.160	BLBB, BLPW, LTBB, LTPW, DBBB, DBPW	160	182	22	27

Symbol key: o o = Hole centre < > = Overall length ◇ = Width ▶ = Projection ∅ = Diameter





# Belt

## Contemporary Handle

The Belt collection is a unique addition to the Momo Handles collection. Featuring both a D shape handle and a loop shaped pull, this range is available in six on-trend finishes.



Volcano Red  
(VRD)



Matt White  
(MWH)



Matt Black  
(MBL)



Mocca  
(MOC)



Forest Green  
(FGR)



Moss Grey  
(MGY)

Part no.	Finish	oo	<>	^	▶
BLK063	VRD, MWH, MBL, MOC, FGR, MGY	-	63.5	22	29
BLDH160	VRD, MWH, MBL, MOC, FGR, MGY	160	221	22	28





# Barcco



Natural Ash (NA)



Walnut (WN)

Part no.	Finish	oo	<>	^	↳
B0340.160	NA, WN	160	200	18	33
B0340.320	NA, WN	320	400	18	33

# Ara



Walnut with Stainless Steel (WNSS)



Oak with Stainless Steel (OAKSS)

# Tacco



Walnut (WN)



Unfinished Beech (BCHU)



Natural Ash (NA)

Part no.	Finish	oo	<>	^	↳
A0239.160	WNSS, OAKSS	160	220	15	32
A0239.224	WNSS, OAKSS	224	284	15	32

Part no.	Finish	oo	<>	^	↳
T0326.032	WN, BCHU, NA	32	92.3	83.6	16

# Calin



Oak Woodgrain  
(OWG)

Black Woodgrain  
(BWG)

Part no.	Finish	oo	<>	^	▶
C0165.160	OWG, BWG	160	240	30	30

# Echo



Oak Woodgrain  
(OWG)

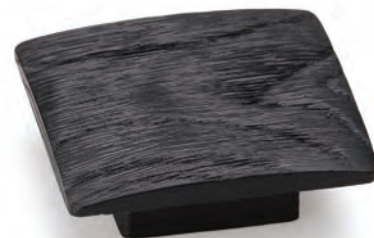


Black Woodgrain  
(BWG)

# Balto



Oak Woodgrain  
(OWG)



Black Woodgrain  
(BWG)

Part no.	Finish	oo	<>	^	▶
E0166.060	OWG, BWG	-	60ø	-	22

Part no.	Finish	oo	<>	^	▶
B0167.060	OWG, BWG	16	60	60	22

Symbol key: oo = Hole centre <> = Overall length ^ = Width ▶ = Projection ø = Diameter





# New Hampton

## Classic handle range

A modern classic, precisely designed with a slight twist. Offered in six stunning finishes to complement the finest cabinetry.



Polished Nickel (PN)



Dull Brushed Nickel (DBR)



Matt Black (MBL)



Bronze (BNZ)



Dark Brushed Brass (DBB)



Matt Brass (MBR)

Description	Part no.	Finish	o o	< >	∨	↳
Knob	NHMK032	PN, DBR, MBL, BNZ, DBB, MBR	-	32ø	-	36
Cup Pull	NHMCW096	PN, DBR, MBL, BNZ, DBB, MBR	96	123	39	20
Cup Pull	NHMCW160	PN, DBR, MBL, BNZ, DBB, MBR	160	185	39	20
D Handle	NHMD160	PN, DBR, MBL, BNZ, DBB, MBR	160	168	17	26





# Caselle



Matt Black (MBL)

Part no.	Finish	o o	< >	∧ ∨	↳
CFK030	MBL, SB, VN	-	30∅	-	24
CDH160	MBL, SB, VN	160	185	25	34
CDH320	MBL, SB, VN	320	346	25	34



Satin Brass (SB)

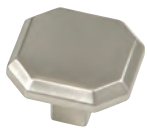


Vintage Nickel (VN)

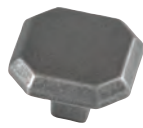
# Jago



Satin Brass (SB)



Brushed Nickel (BRN)



Antique Pewter (AP)

# Lumi



Antique Brass (AB)



Satin Brass (SB)



Vintage Nickel (VN)



Antique Pewter (AP)

Description	Part no.	Finish	o o	< >	∧ ∨	↳
Knob	JSK032	SB, BRN, AP	-	32	32	23
D Handle	JDH160	SB, BRN, AP	160	175	15	32

Part no.	Finish	o o	< >	∧ ∨	↳
LDH160	AB, SB, VN, AP	160	173	13	33
LDH320	AB, SB, VN, AP	320	335	13	33

# Trafalgar



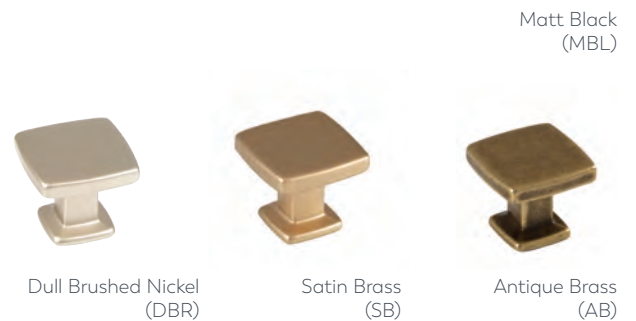
Description	Part no.	Finish	o o	< >	^	↳
Round Knob	TRRK035	PN, BNZ, PW	-	37ø	-	37
Cup Pull	TRCP064	PN, BNZ, PW	64	102	46	29
Bow Handle	TRBH096	PN, BNZ, PW	96	142	25	22



# Otto



Part no.	Finish	o o	< >	^	↳
OSK028	MBL, DBR, SB, AB	-	28	-	24
OCP096	MBL, DBR, SB, AB	96	113	25	21
ODH160	MBL, DBR, SB, AB	160	175	15	29



Symbol key: o o = Hole centre < > = Overall length ^ = Width ↳ = Projection Ø = Diameter



# Land



Brushed Gold  
(BRC)



Matt Black  
(MBL)



Antique Brass  
(AB)



Pewter  
(PW)

Part no.	Finish	oo	<>	^	v	↳
L0494.40	BRC, MBL, AB, PW	-	40ø	-	-	33
L0494.64	BRC, MBL, AB, PW	64	98	40	-	32

# Raviolo



Antique Brass  
(AB)



Pewter  
(PW)

Part no.	Finish	oo	<>	^	v	↳
R0405.029	AB, PW	-	29ø	-	-	27
R0405.096	AB, PW	96	172	22	-	26

# Loreto



Polished Nickel (PN)

Part no.	Finish	oo	<>	^	↳
L8951.060	PN, BMB, BRN	-	60	23	34
L8951.128	PN, BMB, BRN	128	165	23	34
L8951.224	PN, BMB, BRN	224	260	23	34



Brushed Matt Brass (BMB)



Brushed Nickel (BRN)

# Ambrose



Antique Bronze Matt (ABM)

Description	Part no.	Finish	oo	<>	^	↳
Round Knob	CRK032	ABM	-	32ø	-	30
T Knob	AMB060	ABM	-	60	24	35
160mm Bar	AMB160	ABM	160	195	24	35
224mm Bar	AMB224	ABM	224	260	24	35

Symbol key: oo = Hole centre <> = Overall length ^ = Width ↳ = Projection ø = Diameter



# Strano



Brushed Satin Brass (BSB)

Part no.	Finish	oo	<>	^	↳
STK060	BSB, MBL, DBR, MWH, PN, AB	-	60	12	34
SBH160	BSB, MBL, DBR, MWH, PN, AB	160	200	12	34
SBH320	BSB, MBL, DBR, MWH, PN, AB	320	360	12	34



Matt Black (MBL)



Dull Brushed Nickel (DBR)



Matt White (MWH)



Polished Nickel (PN)



Antique Brass (AB)

# Maida



Part no.	Finish	oo	<>	^	↳
MTK052	MBL, BSB, AB, PN, DBR	-	52	16	34
MBH160	MBL, BSB, AB, PN, DBR	160	212	16	36
MBH320	MBL, BSB, AB, PN, DBR	320	372	16	36



Matt Black (MBL)



Brushed Satin Brass (BSB)



Antique Brass (AB)



Polished Nickel (PN)

## Salvano



Polished Nickel (PN)



Matt Black (MBL)



Brushed Matt Brass (BMB)



Brushed Nickel (BRN)

Part no.	Finish	o o	< >	^	↳
S8884.160	PN, MBL, BMB, BRN	160	198	25	20

## Bosco



Polished Nickel (PN)



Matt Black (MBL)



Brushed Matt Brass (BMB)



Brushed Nickel (BRN)

Part no.	Finish	o o	< >	^	↳
B1959.032	PN, MBL, BMB, BRN	-	32ø	-	30

## Catona



Polished Nickel (PN)



Matt Black (MBL)



Brushed Matt Brass (BMB)



Brushed Nickel (BRN)

Part no.	Finish	o o	< >	^	↳
C1937.032	PN, MBL, BMB, BRN	-	32ø	-	37

## Pellaro



Polished Nickel (PN)



Matt Black (MBL)



Brushed Matt Brass (BMB)



Brushed Nickel (BRN)

Part no.	Finish	o o	< >	^	↳
P1915.032	PN, MBL, BMB, BRN	-	32ø	-	32

Symbol key: o o = Hole centre < > = Overall length ^ = Width ↳ = Projection ø = Diameter

# Georgia



Chrome Plated  
(CP)

Description	Part no.	Finish	⊙	<>	∧	↳
Knob	KB3840.32	CP, BRN	-	32	32	28
Cup Pull	HN3843.96	CP, BRN	96	145	41	27
D Handle	HN3841.128	CP, BRN	128	177	24	28
D Handle	HN3841.224	CP, BRN	224	268	24	28



Brushed Nickel  
(BRN)

# Iron Bridge



Natural Iron  
(NI)

Description	Part no.	Finish	⊙	<>	∧	↳
Knob	TKNB120.32	NI	-	32∅	-	21
D Handle	TBP120.128	NI	128	137	18	27
D Handle	TBP120.203	NI	203	211	18	30



## Bordeaux



Pewter  
(PW)

Description	Part no.	Finish	oo	<>	^	↳
Knob	KB3624.35	PW	-	35∅	-	37
T Knob	KB3625.90	PW	-	90	25	42
D Handle	HN3626.128	PW	128	153	25	40

## Windsor



Pewter  
(PW)

Description	Part no.	Finish	oo	<>	^	↳
Knob	KB3951.34	PW	-	34	34	34
D Handle	HN3952.128	PW	128	151	24	28
D Handle	HN3952.160	PW	160	185	24	28

Symbol key: oo = Hole centre <> = Overall length ^ = Width ↳ = Projection ∅ = Diameter

# Tomi



Description	Part no.	Finish	○○	<>	∧ ∨	↳
Round Knob	TKNB280.30	NI	-	33∅	-	31
T Knob	TKNB280.90	NI	-	90	26	53
D Handle	TDH280.128	NI	128	155	26	41
Swivel Bail	TDRH280.224	NI	224	252	64	30
Swivel Bail	TDRH280.320	NI	320	338	64	30

Natural Iron (NI)

# George



Pewter (PW)

Description	Part no.	Finish	○○	<>	∧ ∨	↳
Knob	KB3849.32	PW	-	32	32	28
Cup Pull	HN3851.96	PW	96	145	41	27
D Handle	HN3850.128	PW	128	177	24	28
D Handle	HN3850.224	PW	224	268	24	28

# Emma



Natural Iron (NI)

Aged Antique Brass (AAB)

Description	Part no.	Finish	○○	<>	∧ ∨	↳
Knob	TKNB230.58	NI, AAB	32	58	18	26
D Handle	TBP230.128	NI, AAB	128	162	18	26
D Handle	TBP230.160	NI, AAB	160	195	18	26

# Crosby



Pewter (PW)

Description	Part no.	Finish	oo	<>	∧	↳
Knob	TJ3738.34	PW	-	34∅	-	29
Knob	TJ3738.38	PW	-	38∅	-	34
D Handle	TJ3741.128	PW	128	154	26	47
D Handle	TJ3741.224	PW	224	250	26	47

# Winchester



Pewter (PW)

Description	Part no.	Finish	oo	<>	∧	↳
Knob	KB3983.34	PW	-	34∅	-	28
D Handle	HN3984.128	PW	128	143	15	36
D Handle	HN3984.160	PW	160	175	15	36

# Montrose



Pewter (PW)

Description	Part no.	Finish	oo	<>	∧	↳
Knob	KB3885.32	PW	-	32∅	-	35
D Handle	HN3887.128	PW	128	149	20	39

Symbol key: oo = Hole centre <> = Overall length ∧ = Width ↳ = Projection ∅ = Diameter



# Kansas



Antique Aqua (AAQ)



Antique Cream (ACR)

Description	Part no.	Finish	∅	<>	∧	↳
Oval Knob	T114	AAQ, ACR	-	35	16	24
Square Knob	T226.024	AAQ, ACR	-	25	25	22
Bow Handle	T214.128	AAQ, ACR	128	165	18	24
D Handle	T226.128	AAQ, ACR	128	145	18	22

# Trianon



White Crackle with Pewter (WHCRPW)



Cream Crackle with Antique Brass (CRCRAB)

White with Brushed Nickel (WHBRN)

Description	Part no.	Finish	∅	<>	∧	↳
Round Knob	TCM3620	WHCRPW, CRCRAB, WHBRN	-	35∅	-	32
T Knob	TCM3621	WHCRPW, CRCRAB, WHBRN	-	90	25	42
D Handle	TCM3622	WHCRPW, CRCRAB, WHBRN	128	154	25	40
Swivel Bail	TCM3623.224	WHCRPW, CRCRAB, WHBRN	224	245	63	32

# Redo



Brushed Nickel (BRN)

Part no.	Finish	oo	<>	∧	▶
R0226.128	BRN, AB, PW	128	137	15	32
R0226.192	BRN, AB, PW	192	201	15	32



Antique Brass (AB)

Pewter (PW)

# Button

# Duke

These knobs complement the Button and Redo handles.



Matt Black (MBL)



Matt Black (MBL)



Brushed Nickel (BRN)



Pewter (PW)



Antique Brass (AB)



Pewter (PW)



Antique Silver (AS)



Antique Brass (AB)

Part no.	Finish	oo	<>	∧	▶
B0410.160	MBL, PW, AB	160	175	17	25

Part no.	Finish	oo	<>	∧	▶
D0393.31	MBL, BRN, PW, AS, AB	-	31ø	-	25.5

Symbol key: oo = Hole centre <> = Overall length ∧ = Width ▶ = Projection ∅ = Diameter

# Florenzia

## Traditional Handle Range

A comprehensive handle range that includes a wide range of finishes and styles to suit traditional kitchens and cabinets. Available in 4 styles in Charcoal, European Pewter, Matt Black, Antique Brass, Brushed Nickel, Chrome Plated and Brushed Matt Brass.



Description	Part no.	Finish	o o	< >	∧	↳
Plain Knob	CTMK	CH, EPW, MBL, AB, BMB, BRN, CP	-	29ø	-	33
Concentric Knob	CTCK	CH, EPW, MBL, AB	-	33ø	-	26
Cup Pull	CTCP	CH, EPW, MBL, AB, BMB, BRN, CP	64	104	29	25
Bow Handle	CTRP	CH, EPW, MBL, AB	76	138	21	25





momo  
handles

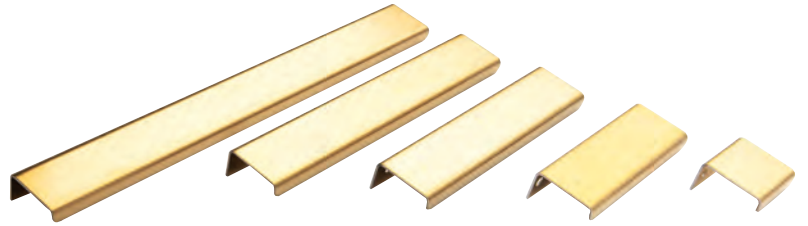
---

## *Project Range*

Our Momo Project range delivers a great selection of handles for those projects with a smaller budget, without compromising on style or quality.

## Ferrara

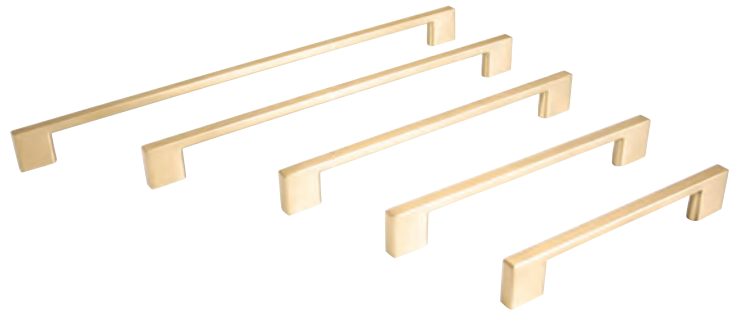
Part no.	Finish	oo	<>	∧	↳
FER038	BB, SS, MBL, WH, PSS	25	38	20	35
FER100	BB, SS, MBL, WH, PSS	88	100	20	35
FER150	BB, SS, MBL, WH, PSS	128	150	20	35
FER200	BB, SS, MBL, WH, PSS	160	200	20	35
FER300	BB, SS, MBL, WH, PSS	265	300	20	35



Pictured: Brushed Brass (BB)

## Livorno

Part no.	Finish	oo	<>	∧	↳
M3163.96	BMB, SC, DBR, MBL, MWH	96	120	8	26
M3163.128	BMB, SC, DBR, MBL, MWH	128	160	8	26
M3163.160	BMB, SC, DBR, MBL, MWH	160	192	8	26
M3163.192	BMB, SC, DBR, MBL, MWH	192	224	8	26
M3163.256	BMB, SC, DBR, MBL, MWH	256	288	8	26
M3163.320	BMB, SC, DBR, MBL, MWH	320	352	8	26



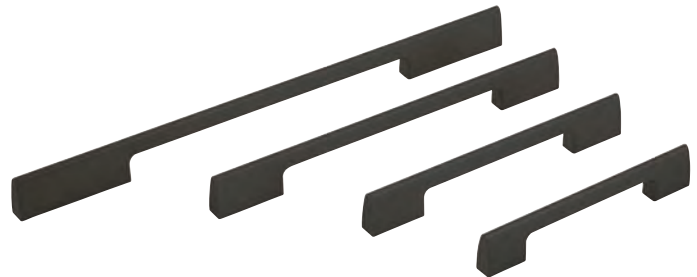
Pictured: Brushed Matt Brass (BMB)

## Vieste

Part no.	Finish	oo	<>	∧	↳
SVA3822.128	MBL, ABN	128	148	11.6	27
SVA3822.160	MBL, ABN	160	180	11.6	27
SVA3822.224	MBL, ABN	224	244	11.6	27
SVA3822.320	MBL, ABN	320	340	11.6	27



Aluminium Brushed Nickel (ABN)



Pictured: Matt Black (MBL)

## New Prato

Part no.	Finish	oo	<>	∧	↳
NPB978.128	MBL, DBR, BMB, MWH	128	165	8	27
NPB978.160	MBL, DBR, BMB, MWH	160	198	8	27
NPB978.256	MBL, DBR, BMB, MWH	256	295	8	27
NPB978.320	MBL, DBR, BMB, MWH	320	359	8	27



Pictured: Matt White (MWH)

Symbol key: oo = Hole centre <> = Overall length ∧ = Width ↳ = Projection ∅ = Diameter



## Barra

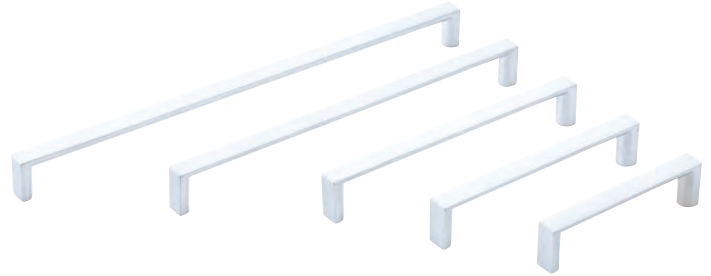
Part no.	Finish	oo	<>	∧	▶
BRDH128	DBR	128	148	10	30
BRDH288	DBR	288	301	10	30



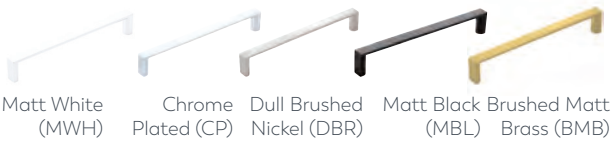
Dull Brushed Nickel (DBR)

## Dallas

Part no.	Finish	oo	<>	∧	▶
FDH96	SC, CP, DBR, MBL, BMB, MWH	96	104	12	26
FDH128	SC, CP, DBR, MBL, BMB, MWH	128	138	12	26
FDH160	SC, CP, DBR, MBL, BMB, MWH	160	169	12	26
FDH224	SC, CP, DBR, MBL, BMB, MWH	224	231	12	26
FDH288	SC, CP, DBR, MBL, BMB, MWH	288	297	12	26
FDH352	SC, CP, DBR, MBL, BMB	352	361	12	26
FDH448	SC, CP, DBR, MBL, BMB	448	457	12	26



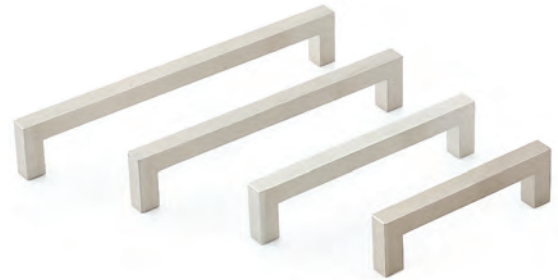
Satin Chrome (SC)



Matt White (MWH) Chrome Plated (CP) Dull Brushed Nickel (DBR) Matt Black (MBL) Brushed Matt Brass (BMB)

## Sevilla

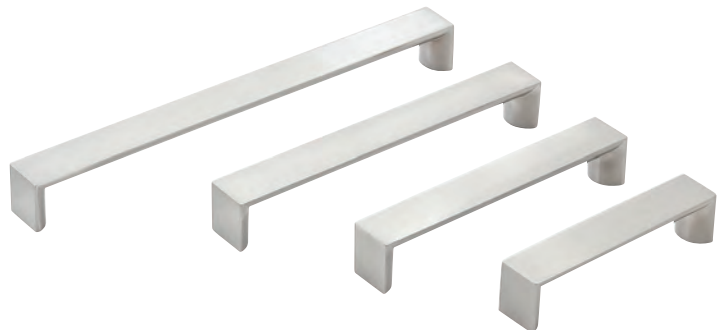
Part no.	Finish	oo	<>	∧	▶
K3201.96	ABN	96	107	11	32
K3201.128	ABN	128	139	11	32
K3201.160	ABN	160	171	11	32
K3201.288	ABN	288	299	11	32



Aluminium Brushed Nickel (ABN)

## Boston

Part no.	Finish	oo	<>	∧	▶
WFDH96	DBR	96	104	21	26
WFDH128	DBR	128	138	21	26
WFDH160	DBR	160	169	21	26
WFDH224	DBR	224	233	21	26



Dull Brushed Nickel (DBR)

## Torino

Part no.	Finish	oo	<>	^	↳
M1755.128	BRN, CP	128	142	7	35
M1755.160	BRN, CP	160	174	7	35



Chrome Plated (CP)



Brushed Nickel (BRN)

## Milano

Part no.	Finish	oo	<>	^	↳
M1295.128	DBR, CP, MBL	128	136	8	28
M1295.160	DBR, CP, MBL, MTG	160	168	8	28
M1295.192	DBR, CP, MBL	192	200	8	28
M1295.320	DBR, CP, MBL, MTG	320	328	8	28



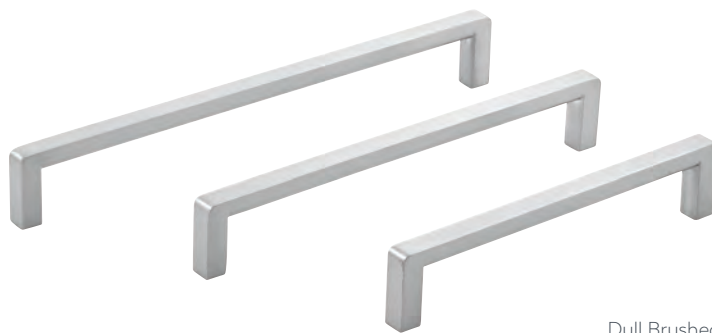
Chrome Plated (CP)



Metallic Grey (MTG)



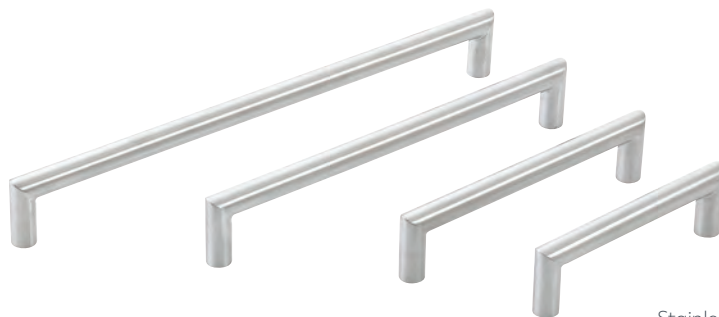
Matt Black (MBL)



Dull Brushed Nickel (DBR)

## Bergamo

Part no.	Finish	oo	<>	^	↳
KHD96	SS	96	108	12	34
KHD128	SS	128	140	12	34
KHD160	SS	160	172	12	34
KHD224	SS	224	236	12	34
KHD288	SS	288	300	12	34



Stainless Steel (SS)

## Vigo

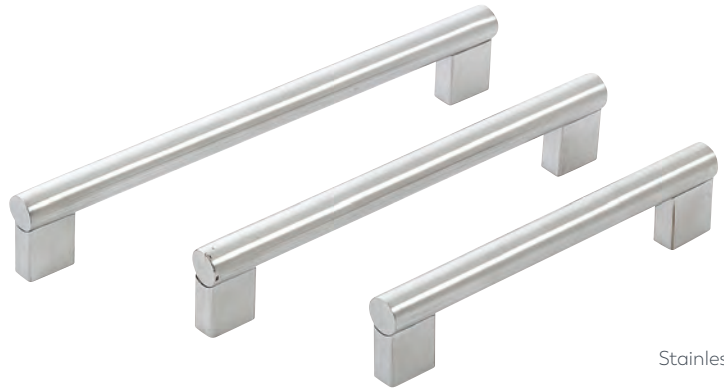
Part no.	Finish	oo	<>	^	↳
M367.160	BRN	160	170	14	35



Brushed Nickel (BRN)

## Barletta

Part no.	Finish	○○	<>	∧	▶
M2003.128	SS	128	148	14	34
M2003.160	SS	160	180	14	34
M2003.192	SS	192	212	14	34
M2003.288	SS	288	308	14	34



Stainless Steel (SS)

## Trento

Part no.	Finish	○○	<>	∧	▶
K230.160	ABN	160	172	14	35
K230.224	ABN	224	236	14	35
K230.352	ABN	352	364	14	35



Aluminium Brushed Nickel (ABN)

## Kempton

Part no.	Finish	○○	<>	∧	▶
K250.160	ABN	160	170	24	37
K250.224	ABN	224	234	24	37



Aluminium Brushed Nickel (ABN)

## Caserta

Part no.	Finish	○○	<>	∧	▶
MFBH160	ABN, ALU	160	189	30	30
MFBH224	ABN, ALU	224	264	20	30



Aluminium (ALU)



Aluminium Brushed Nickel (ABN)



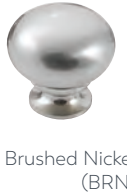
## Brooklyn

Part no.	Finish	oo	<>	∧	↳
WHAH96	BRN, CP, SC	96	108	15	32
WHAH128	BRN, CP, SC	128	146	15	29



## Lugo

Part no.	Finish	oo	<>	∧	↳
3230	BRN, CP, SC	-	30∅	-	27
3238	BRN, PB, SC	-	38∅	-	31



## Evora

Part no.	Finish	oo	<>	∧	↳
DC1219	MBL, SC	-	19∅	-	20
DC1226	MBL	-	26∅	-	27



## Asti

Part no.	Finish	oo	<>	∧	↳
OKL	BRN	-	32	22	32



# Index

## Premium Ranges

4

Aspen	12
Barrington	16
Barrington Eclipse	18
Belgravia	8
Bellevue	4
Brighton	6
Liberty	14
Manhattan	10
Pembrey	20
Sussex	10

## Designer Ranges

22

Acuto	27
Ambrose	53
Angle	38
Ara	46
Arpa	24
Ball	42
Balto	47
Barcco	46
Bau	42
Belt	44
Bol	42
Bordeaux	57

Bosco	55
Brave	30
Brikk	40
Button	61
Calin	47
Caselle	50
Catona	55
Como	42
Crosby	59
Cutt	40
Duke	61
Echo	47
Emma	58
Flapp Aluminum	37
Flapp Timber	36
Flexa	43
Floid	29
Florenca	63
Fold	41
George	58
Georgia	56
Graf	23
Graf Knob	23
Iron Bridge	56
Jago	50
Kansas	60



Land	52	Vann	34
Loreto	52	Vena	27
Lumi	50	Winchester	59
Luv	29	Windsor	57
Maida	54		
Montrose	59	<b>Project Ranges</b>	<b>64</b>
New Hampton	48	Asti	69
Nick	40	Barletta	68
Noma	34	Barra	66
Ona	32	Bergamo	67
Otto	51	Boston	66
Pellaro	55	Brooklyn	69
Rail	26	Caserta	68
Raviolo	53	Dallas	66
Redo	61	Evora	69
Roma	28	Ferrara	65
Salvano	55	Kempton	68
Sense Mini	28	Livorno	65
Sirolo	40	Lugo	69
Sola	35	Milano	67
Strano	54	New Prato	65
Switch	41	Sevilla	66
Tacco	46	Torino	67
Tomi	58	Trento	68
trafalgar	51	Vieste	65
Trianon	60	Vigo	67







momo  
handles

A Furnware Brand

[www.momohandles.com.au](http://www.momohandles.com.au)