



ECHOPANEL[®]

WOVENIMAGE.COM



WOVEN IMAGE[®]

Invented and launched by Woven Image in 2004, EchoPanel® is the original decorative interior panelling solution, with acoustic qualities and eco-innovation at its core.

EchoPanel® reduces and controls reverberated noise in shared environments, making it ideal for use in a variety of commercial interior spaces including workplace, education and hospitality environments.

It is a streamlined product with a fabric-like finish, designed with dematerialisation in mind. Once it's been installed, there is no need to upholster, paint or protect it.

Pioneering the war against single-use plastic, EchoPanels® production uses post-consumer recycled PET bottles to create a superior upcycled product with a vast array of interior applications.

EXTENSIVE PRODUCT RANGE

EchoPanel® offers the largest colour palette on the market. The solid colour remains consistent throughout the thickness of the panel, so you can cut, create and install without the need for edging or capping.

EchoPanel® also boasts an extensive range of inspiring prints and precision cut designs, making it the go-to brand for creative Architects and Interior Designers.

Offered in 3 panel thicknesses; 24MM, 12MM and 7MM.

The 12MM and 7MM thicknesses are now available in larger panel sizes (2800MM x 1200MM¹) for seamless floor to ceiling applications.

APPLICATIONS

EchoPanel® is durable, lightweight, and easy to cut and install, making it ideal for a multitude of wall, ceiling and free-standing interior applications. Frequent installations include:

- Wall Panelling. Direct fix installation or create an air gap for greater acoustic performance.
- Feature Wall Tiling.²
- Ceiling Applications. Direct fix or suspended systems.
- Workstations. Its slender, pinnable nature enables it to be used as a double-sided division in a workstation.
- Free-Standing Partitioning Systems.³ Ideal in the 24MM thickness.
- Hanging Pendants.³ For dividing a space with privacy and acoustic control.

“ The 12mm and 7mm thicknesses are now available in larger panel sizes (2800MM x 1200MM) for seamless floor to ceiling applications. ”

In-house design for custom printing and precision cutting projects, offers endless possibilities when it comes to creating a bespoke designer look.

ACOUSTIC CONTROL

Controlling reverberated noise is a crucial factor in creating comfortable and productive environments, be it a professional workplace, learning environment, social setting or retail space.

EchoPanel® is optimised for acoustic performance and has been independently tested, in accordance with AS ISO 354, to achieve a Noise Reduction Coefficient (NRC) rating to meet your projects acoustic requirements, be it a new building or interior refurbishment.

DESIGNED FOR COMMERCIAL INTERIORS

EchoPanel® has undergone many forms of industry testing and complies with some of the world's highest mandatory standards.

Its fire-retardant properties have been developed so that it is an excellent performer in the safety arena. It holds first-class ratings in Australasian and International markets, achieving a Group 1 rating in the 'ISO 9705' full-scale room fire test. EchoPanel® 12MM has also been awarded a valuable 'GB 8624 B1 level', and the internationally recognised 'BS EN 13501.1: Classification B-s1, d0'.

¹ Manufacturing tolerances apply

² Refer to Woven Images Acoustic Tiles brochure or visit [wovenimage.com](https://www.wovenimage.com)

³ Refer to Woven Images Space-Dividing brochure or visit [wovenimage.com](https://www.wovenimage.com)



ECHOPANEL® ENVIRONMENTAL STORY

Dematerialisation, recycling, upcycling and life cycle management were, and still are, at the foundation of EchoPanels® design.

Made from 60% post-consumer waste, sourced from single-use PET bottles, EchoPanel® products are dedicated to the environment. Aside from saving tonnes of plastic waste from our oceans and landfill, the PET is converted into EchoPanel® which boasts a 10-year life expectancy, after which the material is still 100% recyclable.

EchoPanel® is only printed with environmentally sensitive pigment inks to deliver excellent light fastness while remaining low-VOC, non-flammable and non-toxic.

Impressively, in 2018/19, Woven Image diverted in excess of 624 tonnes of PET plastic from landfill. This equates to over 31 million waste bottles being repurposed into EchoPanel® products annually.

To date, 200 million 600ml PET bottles have been diverted from landfill to produce EchoPanel®.

“ To date, 200 million 600ml PET bottles have been diverted from landfill to produce EchoPanel® products. ”

ENVIRONMENTAL CERTIFICATION

EchoPanel® achieves Global GreenTag™ certification (Green Rate Level A) with the maximum Product Health Declaration™: Platinum Health, for EchoPanel® plain colours.⁴



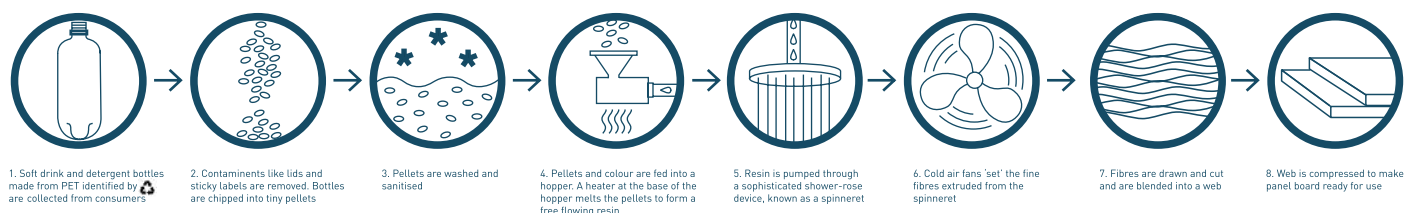
EPD®
AUSTRALASIA
ENVIRONMENTAL PRODUCT DECLARATION
EPD REGISTRATION NUMBER: S-P-01162

Furthermore, EchoPanel® can secure credits under the following sustainable building rating tools:

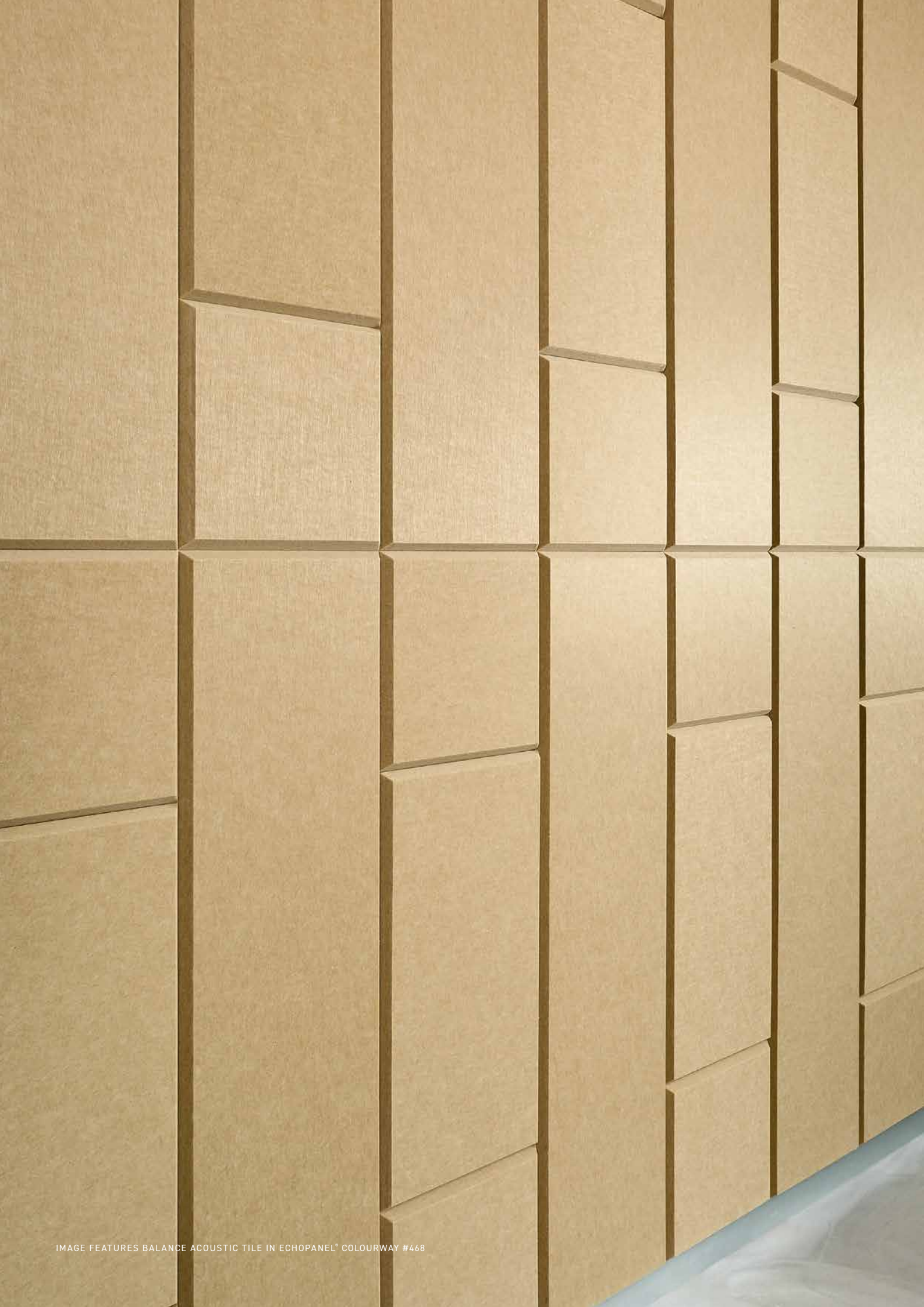
- Green Star, as administered by Green Building Council Australia.
- WELL™ Building Standard, International WELL Building Institute.
- Leadership in Energy and Environmental Design (LEED v4.1).

EchoPanels® acoustic qualities, along with its extensive colour, design and customisation properties, offers designers the freedom to create stylish, unique and sustainable interior spaces.

THE ECHOPANEL® PRODUCTION PROCESS



⁴ Visit wovenimage.com for further information, or a copy of our full Environmental Product Declaration



ECHOPANEL® COLOUR RANGE



EchoPanel® is available in a comprehensive range of neutral, mid tone and vibrant colours. Due to its unique manufacturing process, the colour remains consistent throughout the depth of the panel.

The standard 12MM range includes all 31 colours, with a selection of these colours also available in 7MM and 24MM thicknesses.

Colours shown are for reference only, please contact your local Woven Image representative for a sample prior to ordering.

LEGEND:

- COLOURS AVAILABLE ECHOPANEL® 7MM
- COLOURS AVAILABLE ECHOPANEL® 12MM
- COLOURS AVAILABLE ECHOPANEL® 24MM

ECHOPANEL® COLOUR RANGE



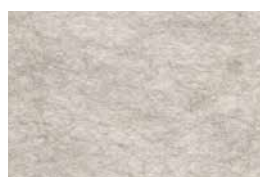
500



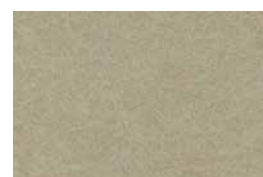
101



908



454



468



402



580



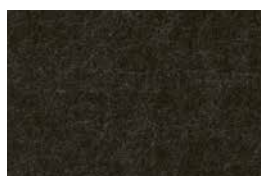
444



442



550



542



276



576



274



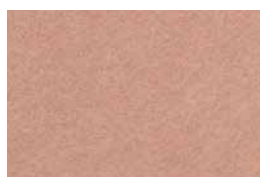
269



193



295



487



384



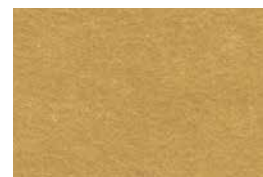
579



381



108



124



330



349



338



325



365



660



551



633



SPECIFICATIONS

PRODUCT	ECHOPANEL® 7MM	ECHOPANEL® 12MM	ECHOPANEL® 24MM
ORIGIN	MADE IN AUSTRALIA	MADE IN AUSTRALIA	MADE IN AUSTRALIA
COMPOSITION	100% PET (60% RECYCLED)	100% PET (60% RECYCLED)	100% PET (60% RECYCLED)
WEIGHT	1400g/M² (+/- 10%)	2400g/M² (+/- 10%)	3000g/M² (+/- 10%)
THICKNESS	7MM (+/- 7%)	12MM (+/- 7%)	24MM (+/- 7%)
PANEL DIMENSIONS	2800MM (+/-10MM) x 1200MM (+/-5MM)	2400MM (+/-5MM) x 1200MM (+/-10MM) (Colourways #101, #442, #500 and #542 only) 2800MM (+/-10MM) x 1200MM (+/-5MM) (All colourways)	2400MM (+/-5MM) x 1820MM (+/-10MM)

PERFORMANCE

COLOUR FASTNESS	ISO 105-B02-1994 RATING: 6-7	ISO 105-B02-1994 RATING: 6-7	ISO 105-B02-1994 RATING: 6-7
FIRE TEST	ISO 9705: GROUP 1, AS 1530.3, BS 476: PART 7 CLASS 2	ISO 9705: GROUP 1, AS 1530.3, GB 8624 B1, BS EN 13501.1: CLASSIFICATION- B-s1, d0	ISO 9705: GROUP 1 ASTM E84 UNADHERED: B or CLASS 2 BS EN 13501.1 CLASSIFICATION - Bs1, d0
SOUND ABSORPTION	AS ISO 354 - 2006 NRC VALUE: 0.25 (WITH NO AIR GAP) NRC VALUE: 0.45 (WITH 20MM AIR GAP) NRC VALUE: 0.70 (WITH 50MM AIR GAP)	AS ISO 354 - 2006 NRC VALUE: 0.45 (WITH NO AIR GAP) NRC VALUE: 0.60 (WITH 20MM AIR GAP) NRC VALUE: 0.75 (WITH 50MM AIR GAP)	AS ISO 354 - 2006 NRC VALUE: 0.65 (WITH NO AIR GAP) NRC VALUE: 0.75 (WITH 20MM AIR GAP) NRC VALUE: 0.85 (WITH 50MM AIR GAP)
VOC EMISSIONS (ECHOPANEL® UNPRINTED)	ASTM D5116 RATE: LESS THAN 0.02 MG/M²/HR (7 DAYS)	ASTM D5116 RATE: LESS THAN 0.02 MG/M²/HR (7 DAYS)	ASTM D5116 RATE: LESS THAN 0.02 MG/M²/HR (7 DAYS)
VOC EMISSIONS (ECHOPANEL® PRINTED)	ASTM D5116 RATE: LESS THAN 0.093 MG/M²/HR (7 DAYS)	ASTM D5116 RATE: LESS THAN 0.093 MG/M²/HR (7 DAYS)	ASTM D5116 RATE: LESS THAN 0.093 MG/M²/HR (7 DAYS)
ENVIRONMENTAL (ECHOPANEL® UNPRINTED)	GREEN TAG CERTIFICATION GREEN RATE: LEVEL A GREEN TAG HEALTH RATE: PLATINUM  	GREEN TAG CERTIFICATION GREEN RATE: LEVEL A GREEN TAG HEALTH RATE: PLATINUM  	GREEN TAG CERTIFICATION GREEN RATE: LEVEL A GREEN TAG HEALTH RATE: PLATINUM  
ENVIRONMENTAL (ECHOPANEL® PRINTED)	GREEN TAG CERTIFICATION GREEN RATE: LEVEL A GREEN TAG HEALTH RATE: GOLD  	GREEN TAG CERTIFICATION GREEN RATE: LEVEL A GREEN TAG HEALTH RATE: GOLD  	GREEN TAG CERTIFICATION GREEN RATE: LEVEL A GREEN TAG HEALTH RATE: GOLD  



ECHOPANEL[®] PRECISION CUTS

IMAGE FEATURES ECHOPANEL[®] LONGITUDE IN COLOURWAY #330 AND ACOUSTIC LIGHT IN ECHOPANEL[®] COLOURWAY #487

ECHOPANEL® LONGITUDE



IMAGE FEATURES ECHOPANEL® LONGITUDE IN COLOURWAY #269

DESIGNED BY
PANEL DIMENSIONS

WOVEN IMAGE
12MM PANEL:
2750MM (+/-2MM) X 1100MM (+/-2MM) X 12MM (+/-7%)
FULL ECHOPANEL® COLOUR RANGE

COLOURS

500	101	908	454	468	
550	542	402	580	444	442
276	274	576	487		
269	193	295	124	108	
330	349	384	579	338	381
365	660	633	551	325	

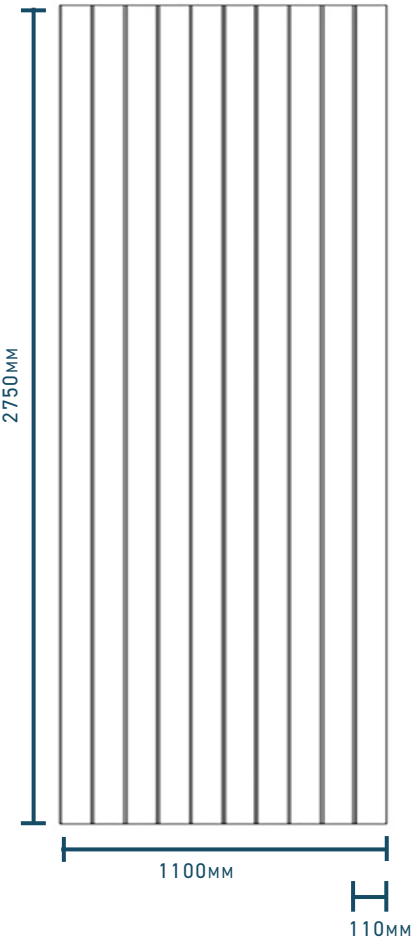




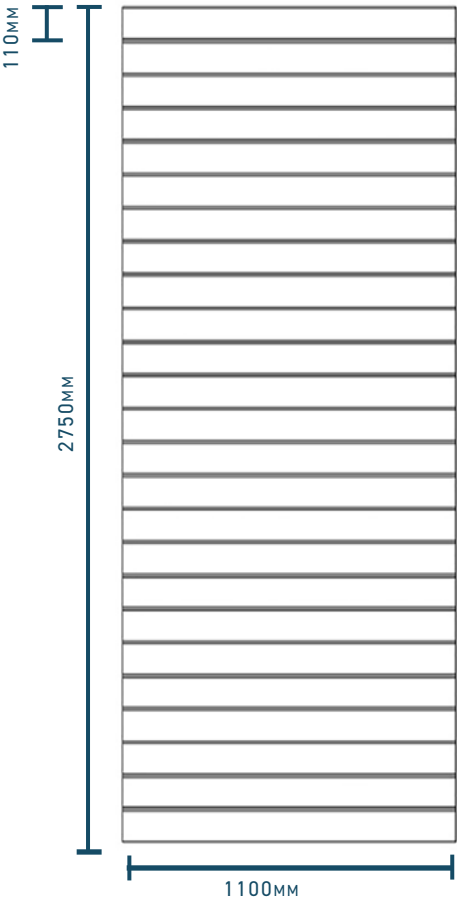
IMAGE FEATURES ECHOPANEL® LATITUDE IN COLOURWAY #384 AND COLOURWAY #487

DESIGNED BY
PANEL DIMENSIONS

COLOURS

WOVEN IMAGE
12MM PANEL:
2750MM (+/-2MM) X 1100MM (+/-2MM) X 12MM (+/-7%)
FULL ECHOPANEL® COLOUR RANGE

500	101	908	454	468	
550	542	402	580	444	442
276	274	576	487		
269	193	295	124	108	
330	349	384	579	338	381
365	660	633	551	325	



ECHOPANEL® MERIDIAN

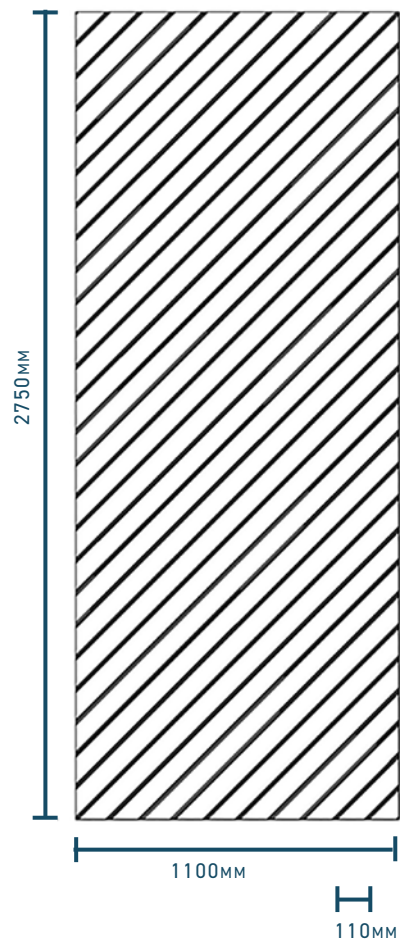
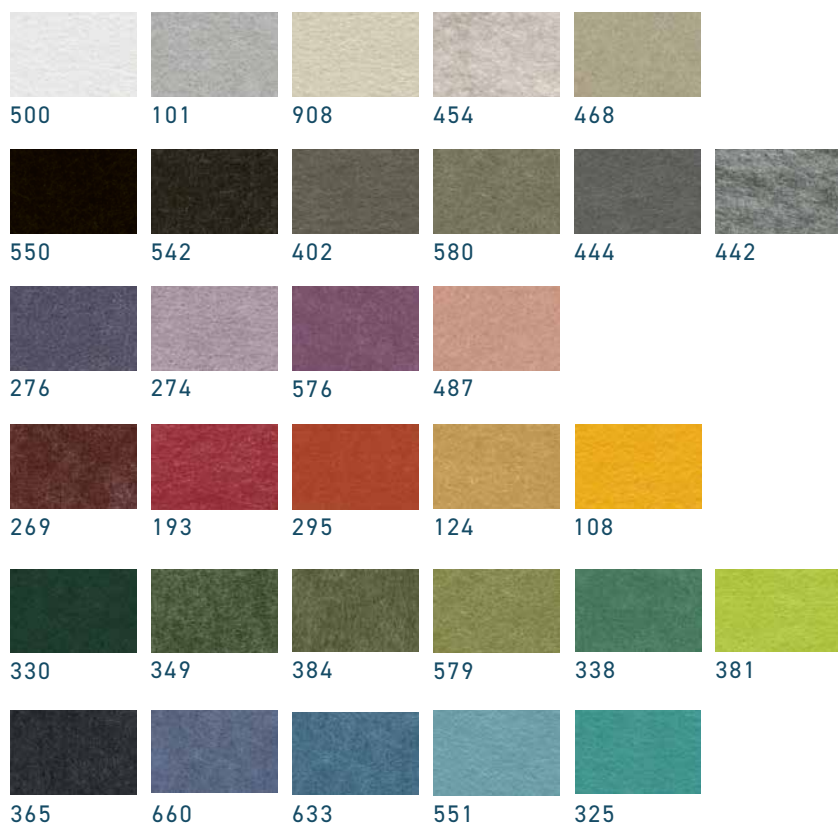


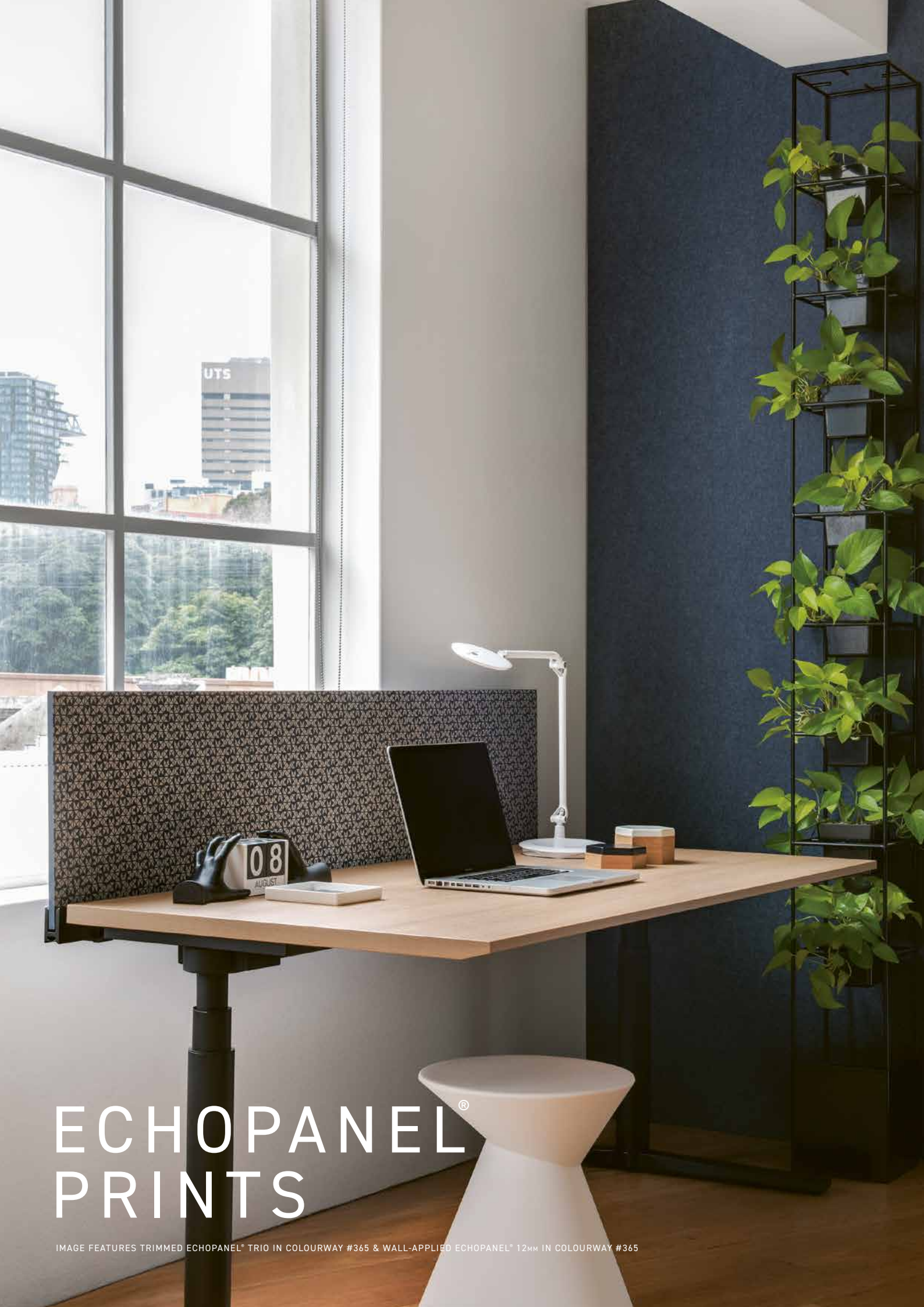
IMAGE FEATURES ECHOPANEL® MERIDIAN IN COLOURWAY #274

DESIGNED BY
PANEL DIMENSIONS

WOVEN IMAGE
12MM PANEL:
2750MM (+/-2MM) X 1100MM (+/-2MM) X 12MM (+/-7%)
FULL ECHOPANEL® COLOUR RANGE

COLOURS





ECHOPANEL[®] PRINTS

IMAGE FEATURES TRIMMED ECHOPANEL[®] TRIO IN COLOURWAY #365 & WALL-APPLIED ECHOPANEL[®] 12mm IN COLOURWAY #365

ECHOPANEL® ASTRO



IMAGE FEATURES ECHOPANEL® ASTRO IN COLOURWAY #907

DESIGNED BY
PANEL DIMENSIONS

PATTERN REPEAT
PRINT
PRINT TOLERANCE

WOVEN IMAGE
12MM PANEL:
2800MM (+/-10MM) X 1200MM (+/-5MM) X 12MM (+/-7%)
HORIZONTAL 107MM, VERTICAL 173MM
DOUBLE SIDED
HORIZONTAL +/-10MM, VERTICAL +/-10MM

SEE PAGE 8 FOR ADDITIONAL SPECIFICATIONS & PERFORMANCE DETAILS
VISIT WWW.WOVENIMAGE.COM FOR DETAILED PRINT LAYOUT INFORMATION



270 (PEARLESCENT INK)



462 (PEARLESCENT INK)



489 (PEARLESCENT INK)



548 (PEARLESCENT INK)



907



IMAGE FEATURES TRIMMED ECHOPANEL® TRIO IN COLOURWAY #381

DESIGNED BY
PANEL DIMENSIONS

PATTERN REPEAT
PRINT
PRINT TOLERANCE

WOVEN IMAGE
12MM PANEL:
2800MM (+/-10MM) X 1200MM (+/-5MM) X 12MM (+/-7%)
HORIZONTAL 65MM, VERTICAL 65MM
DOUBLE SIDED
HORIZONTAL +/-10MM, VERTICAL +/-10MM

SEE PAGE 8 FOR ADDITIONAL SPECIFICATIONS & PERFORMANCE DETAILS
VISIT WWW.WOVENIMAGE.COM FOR DETAILED PRINT LAYOUT INFORMATION



381



315 (PEARLESCENT INK)



365 (PEARLESCENT INK)



100



500

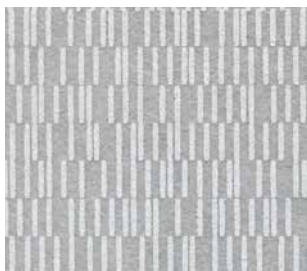
ECHOPANEL® FREQUENCY



IMAGE FEATURES TRIMMED ECHOPANEL® 12MM FREQUENCY IN COLOURWAY #544

DESIGNED BY
PANEL DIMENSION
PATTERN REPEAT
PRINT
PRINT TOLERANCE

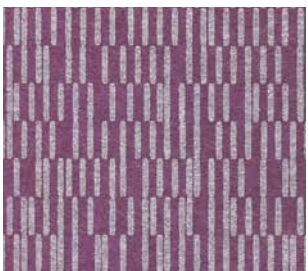
WOVEN IMAGE
● 7MM PANEL: 2800MM (+/-10MM) X 1200MM (+/-5MM) X 7MM (+/-7%)
● 12MM PANEL: 2800MM (+/-10MM) X 1200MM (+/-5MM) X 12MM (+/-7%)
HORIZONTAL 300MM, VERTICAL 320MM (HALF DROP)
ONE SIDED ONLY ON 7MM PANELS
DOUBLE SIDED ON 12MM PANELS
HORIZONTAL +/-10MM, VERTICAL +/-10MM
SEE PAGE 8 FOR ADDITIONAL SPECIFICATIONS & PERFORMANCE DETAILS
VISIT WWW.WOVENIMAGE.COM FOR DETAILED PRINT LAYOUT INFORMATION



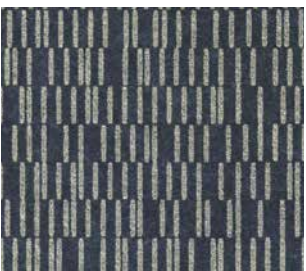
100 ●



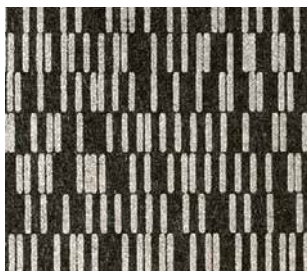
101 (PEARLESCENT INK) ● ●



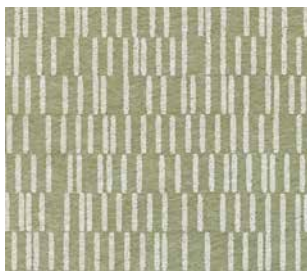
213 (PEARLESCENT INK) ●



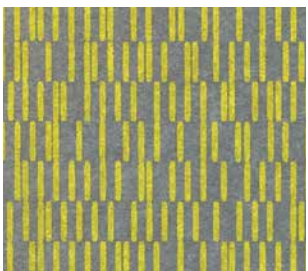
301 (PEARLESCENT INK) ●



544 (PEARLESCENT INK) ● ●



577 ●



612 ●



641 (PEARLESCENT INK) ● ●

ECHOPANEL® TILT



IMAGE FEATURES ECHOPANEL® TILT IN COLOURWAY #402

DESIGNED BY
PANEL DIMENSIONS

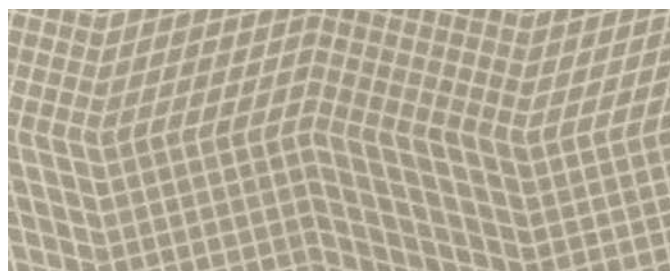
PATTERN REPEAT
PRINT
PRINT TOLERANCE

WOVEN IMAGE
12MM PANEL:
2800MM (+/-10MM) X 1200MM (+/-5MM) X 12MM (+/-7%)
HORIZONTAL 128MM, VERTICAL 128MM
DOUBLE SIDED
HORIZONTAL +/-10MM, VERTICAL +/-10MM

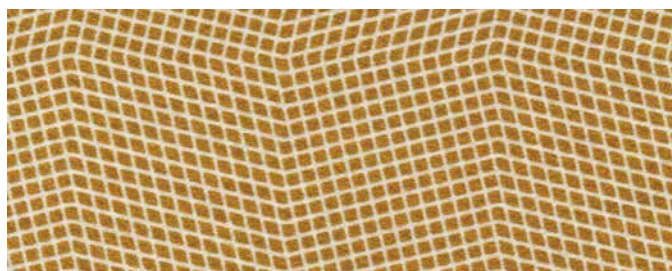
SEE PAGE 8 FOR ADDITIONAL SPECIFICATIONS & PERFORMANCE DETAILS
VISIT WWW.WOVENIMAGE.COM FOR DETAILED PRINT LAYOUT INFORMATION



501



402



131 (PEARLESCENT INK)



545

ECHOPANEL® TRAPEZE

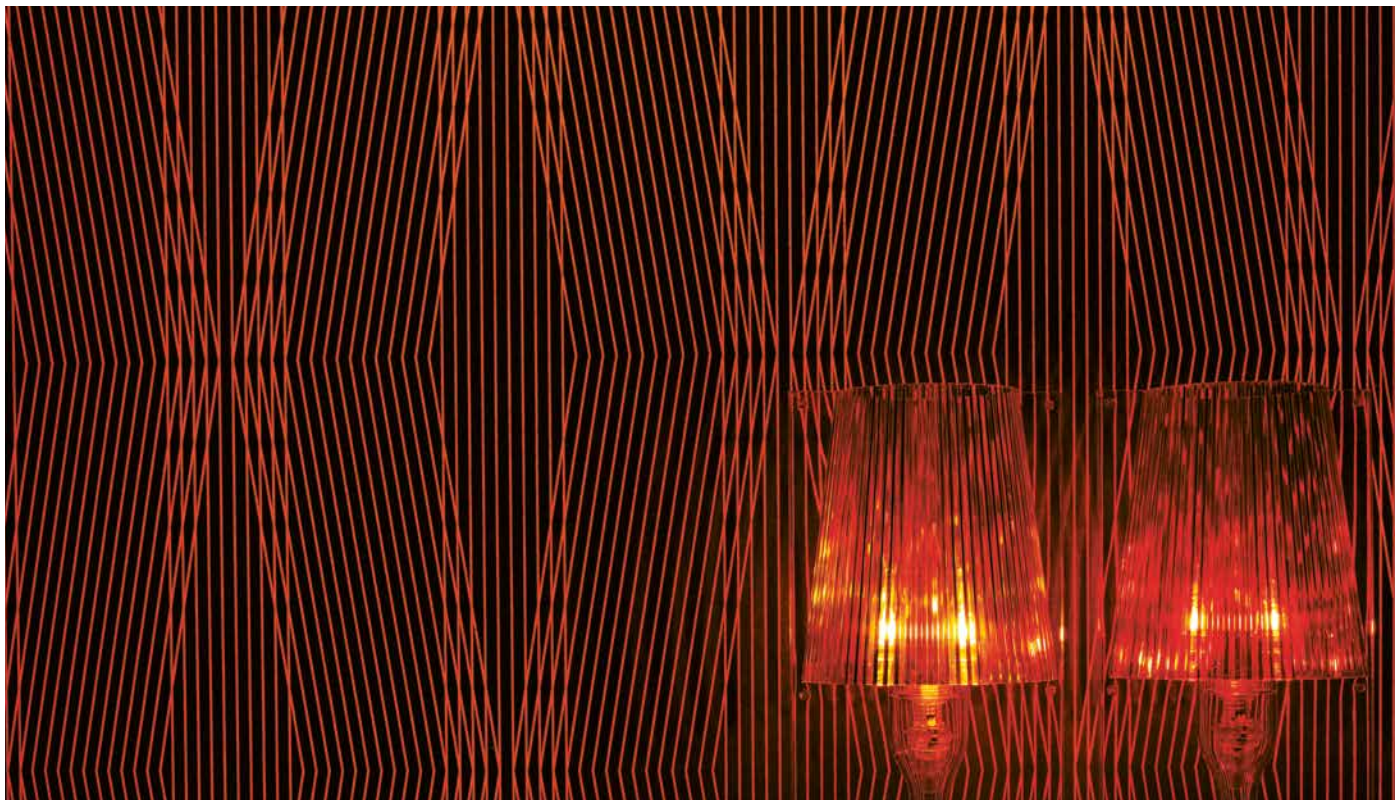


IMAGE FEATURES ECHOPANEL® TRAPEZE IN COLOURWAY #150 UNDER UV LIGHTING

DESIGNED BY
PANEL DIMENSIONS

PATTERN REPEAT
PRINT
PRINT TOLERANCE

WOVEN IMAGE

12MM PANEL:

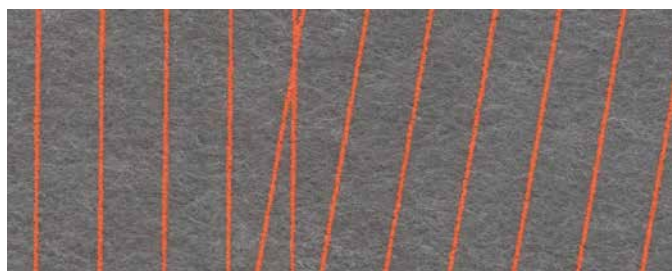
2800MM (+/-10MM) X 1200MM (+/-5MM) X 12MM (+/-7%)

HORIZONTAL 400MM, VERTICAL 590MM

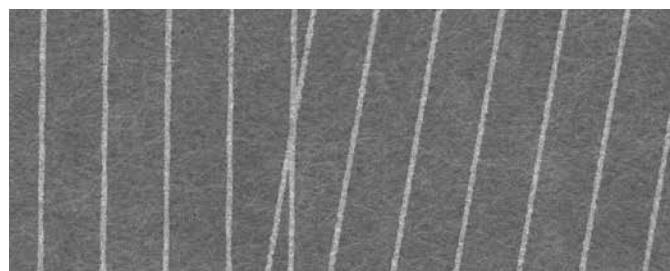
DOUBLE SIDED

HORIZONTAL +/-10MM, VERTICAL +/-10MM

SEE PAGE 8 FOR ADDITIONAL SPECIFICATIONS & PERFORMANCE DETAILS
VISIT WWW.WOVENIMAGE.COM FOR DETAILED PRINT LAYOUT INFORMATION



150 (FLUORESCENT)



443



107 (FLUORESCENT)



454 (PEARLESCENT INK)



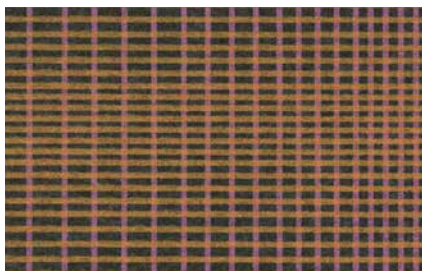
IMAGE FEATURES ECHOPANEL® PLAID IN COLOURWAY #612

DESIGNED BY
PANEL DIMENSIONS

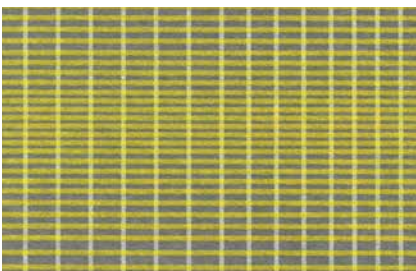
PATTERN REPEAT
PRINT
PRINT TOLERANCE

WOVEN IMAGE
7MM PANEL:
2800MM (+/-10MM) X 1200MM (+/-5MM) X 7MM (+/-7%)
HORIZONTAL 600MM, VERTICAL 600MM
ONE SIDE ONLY
HORIZONTAL +/-10MM, VERTICAL +/-10MM

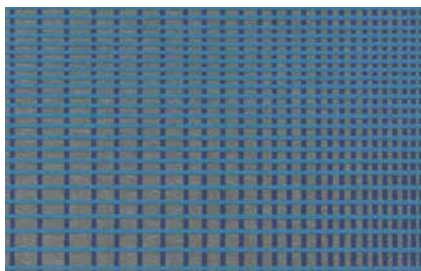
SEE PAGE 8 FOR ADDITIONAL SPECIFICATIONS & PERFORMANCE DETAILS
VISIT WWW.WOVENIMAGE.COM FOR DETAILED PRINT LAYOUT INFORMATION



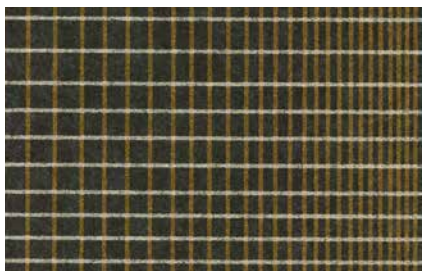
576



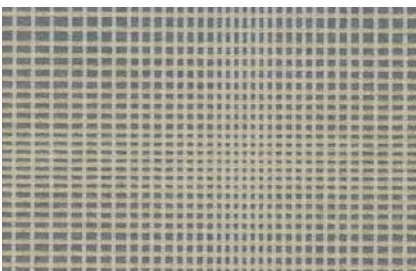
612



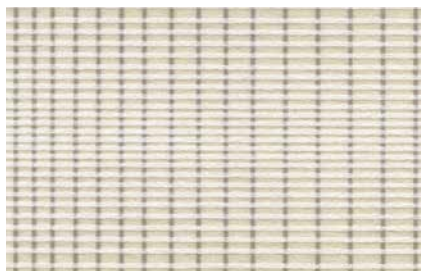
315



546 (PEARLESCENT INK)



141 (PEARLESCENT INK)



451

ECHOPANEL® HAMMOCK



IMAGE FEATURES ECHOPANEL® HAMMOCK IN COLOURWAY #383

DESIGNED BY
PANEL DIMENSIONS

PATTERN REPEAT
PRINT
PRINT TOLERANCE

WOVEN IMAGE
12MM PANEL:
2800MM (+/-10MM) X 1200MM (+/-5MM) X 12MM (+/-7%)
HORIZONTAL 267MM, VERTICAL 480MM
DOUBLE SIDED
HORIZONTAL +/-10MM, VERTICAL +/-10MM

SEE PAGE 8 FOR ADDITIONAL SPECIFICATIONS & PERFORMANCE DETAILS
VISIT WWW.WOVENIMAGE.COM FOR DETAILED PRINT LAYOUT INFORMATION



383



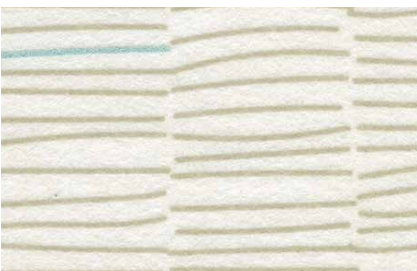
324



554



454



451



IMAGE FEATURES ECHOPANEL® HEX IN COLOURWAY #444

DESIGNED BY
PANEL DIMENSIONS

PATTERN REPEAT

PRINT

PRINT TOLERANCE

BANG DESIGN, FOR WOVEN IMAGE
7MM PANEL: 2800MM (+/-10MM) X 1200MM (+/-5MM) X 7MM (+/-7%)
12MM PANEL: 2800MM (+/-10MM) X 1200MM (+/-5MM) X 12MM (+/-7%)
7MM PANEL: HORIZONTAL 130MM, VERTICAL 74MM
12MM PANEL: HORIZONTAL 74MM, VERTICAL 130MM
ONE SIDED ONLY ON 7MM PANELS
DOUBLE SIDED ON 12MM PANELS
HORIZONTAL +/-10MM, VERTICAL +/-10MM

SEE PAGE 8 FOR ADDITIONAL SPECIFICATIONS & PERFORMANCE DETAILS
VISIT WWW.WOVENIMAGE.COM FOR DETAILED PRINT LAYOUT INFORMATION



444



542



111



ECHOPANEL® RANGE

IMAGE FEATURES TRIMMED ECHOPANEL® TRIO IN COLOURWAY #381. ECHOPANEL® DOT PENDENT IN COLOURWAY #101. ECHOPANEL® 12MM PENDENT IN COLOURWAYS #381 & #442

ECHOPANEL® ACOUSTIC TILES



IMAGE FEATURES BALANCE TILES 325 /650 /1300 IN COLOURWAY #468

EchoPanel® Acoustic Tiles are the perfect product range for designers looking to achieve acoustic function with a quality design. The portfolio boasts an extensive range of solid colours and pattern-matched printed, cut and 3D formed tiles, providing an endless stream of design configurations.

For more information about Acoustic Tiles, please contact your Woven Image representative or visit us online.



IMAGE FEATURES OBLONG TILE IN COLOURWAY #542

ECHOPANEL® ELEMENT



IMAGE FEATURES ECHOPANEL® ELEMENT IN COLOURWAY #365 (CEILING) AND ECHOPANEL® LONGITUDE IN COLOURWAY #101 (WALL)

EchoPanel® Element is a practical, design-led acoustic ceiling solution. It's easy to install, fixing directly to a ceiling or attaching to a ceiling grid using cleverly designed translucent clips for a completely seamless finish.

There is also the option to order a suspension kit solution, allowing EchoPanel® Element to appear to float, creating a design focus, as well as providing an acoustic baffle. There are ten different colourways available, all chosen to enhance a variety of contemporary commercial interior settings.

For more information about EchoPanel® Element, please contact your Woven Image representative or visit us online.



IMAGE FEATURES ECHOPANEL® ELEMENT #330 SUSPENDED



IMAGE FEATURES ECHOPANEL® ELEMENT #101 CLIPPED TO CEILING GRID

ECHOPANEL® INLINE



IMAGE FEATURES ECHOPANEL® INLINE IN COLOURWAY #336 AND #340

EchoPanel® Inline is a suspended acoustic ceiling solution that creates a design focal point whilst reducing reverberated noise in shared spaces. The product consists of three printed panels and all hanging components, including a unique adjustable cable stopper that enables panels to be suspended at various heights above one another. The panels are printed with an elegant gold keyline and are available in three colourways; Onyx, Ivy and Indigo.

Horizontal hanging component kits can also be purchased separately, allowing designers to suspend 24mm EchoPanel® in a multitude of creative configurations.

For more information about EchoPanel® Inline or our horizontal hanging kit, please contact your Woven Image representative or visit us online.



IMAGE SHOWS HORIZONTAL HANGING COMPONENTS



IMAGE FEATURES ECHOPANEL® INLINE IN COLOURWAY #340



IMAGE FEATURES ECHOPANEL® ADAPT CLASSIC IN COLOURWAYS #365 WITH DESK CLAMPS IN COLOURWAY #908

EchoPanel® Adapt workstation screens are available in two different sizes (Adapt Classic: 1790MM x 780MM and Adapt Social: 1790MM x 544MM). They are pinnable, provide privacy and assist in reducing reverberated noise in work spaces. Choose from 10 colours in the EchoPanel® 24MM range.

They are easy to install using our unique desk clamps which are available in charcoal (#542) and cream (#908) colourways. For more information about workstation screens, please contact your Woven Image representative or visit us online.



IMAGE FEATURES ECHOPANEL® ADAPT SOCIAL IN COLOURWAY #542 WITH DESK CLAMPS IN COLOURWAY #542

ECHOPANEL® SPACE DIVIDING SYSTEMS



IMAGE FEATURES TANDEM PENDENTS IN COLOURWAY #551

EchoPanel® Space Dividers allow designers to stylishly define areas within open-plan spaces, whilst delivering privacy and acoustic control. The range includes ceiling-suspended pendants and free-standing space dividers. For more information about Space Dividers, please contact your Woven Image representative or visit us online.



IMAGE FEATURES PALING SPACE DIVIDER IN COLOURWAY #542 WITH COPPER & CHROME JOINERS

