

### SHARED TRESPA® METEON® QUALITIES

The new finish exhibits as good a performance as the existing Trespa® Meteon® finishes in durability, cleanability and longevity.

### NEW COMBINATIONS

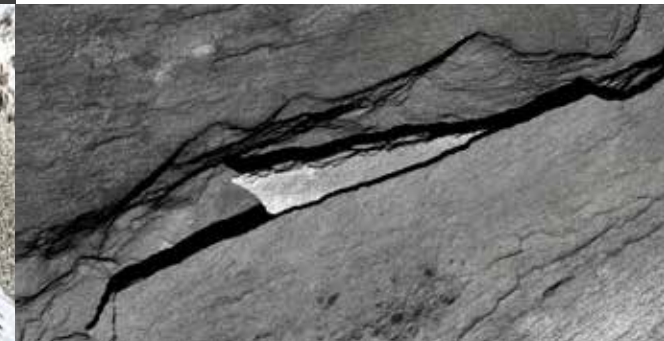
A new look can be achieved by using the new Matt finish alongside the existing Trespa® Meteon® Satin, Rock and Gloss finishes, as well as with other façade materials such as metal and stone.

### NATURAL TOUCH

A natural feeling panel facilitates a unique, tactile experience. Its surface is matt from every angle.

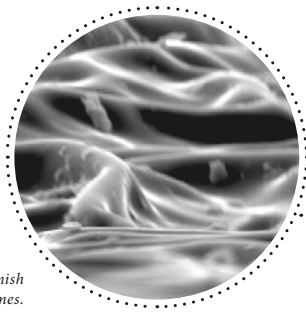
CLOSER TO NATURE

# MATT FINISH

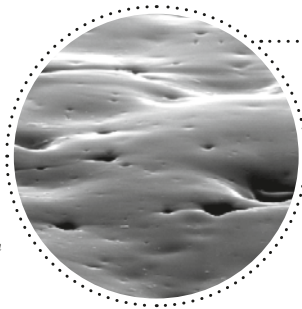


THE NEW MATT FINISH ACCENTUATES AN AUTHENTIC AND NATURAL SENSE IN FAÇADE DESIGN. ▶

“The new finish offers an additional connection to nature with its softer feel.”



Matt finish magnified 2500 times.



Satin finish magnified 2500 times.



Difference between the Satin finish and the new Matt finish.

**METEON® WOOD DECORS AVAILABLE IN MATT FINISH**



**METEON® NATURALS AVAILABLE IN MATT FINISH**



EXPERIENCE THE NEW MATT FINISH BY ORDERING A SAMPLE PACK FROM [TRESPA.COM/NEW](https://trespa.com/new)

**INTRODUCING MATT**

The importance of natural looking products in today's design industry cannot be underestimated. Buildings require advanced materials to help in their durability and utility. Aside from important technical qualities, they can also benefit hugely from a variety of aesthetic options that touch base with more natural and traditional finishes. Over the last 50 years, Trespa has created a palette of colours and finishes to match new ideas that offer architects unprecedented choices in façade aesthetics. To further increase this choice, Trespa introduces its new Matt finish, which promotes a new experience in façade design – going back to nature as its muse.

The new Matt finish has the same outstanding qualities and outdoor endurance as the existing Trespa® Meteon® finishes, but reveals a more natural touch and appearance. Enhanced by its availability in Trespa® Meteon® Naturals and Wood Decors, which replicate nature, the new finish offers an additional connection to nature with its softer feel.

**DURABILITY**

Maintaining the same resistance to weathering as existing Trespa® Meteon® finishes, the new surface also offers a good performance. Confident in its durability, Trespa offers a 10 year product warranty\* which promises colour stability amongst

other features. Three thousand hours of weather exposure simulator testing showed outstanding performance and guarantees the product's longevity worldwide.

**CLOSED SURFACE STRUCTURE**

The new Matt finish has a closed surface structure keeping the product smooth and easy to clean. A variety of graffitis have been tested and demonstrate this\*\* (please visit [trespa.info](https://trespa.info) for cleaning instructions).

**NEW DECORS IN MATT**

The entire range of Meteon® Naturals and a special selection of Meteon® Wood Decors (chosen with advice from prominent international architects) are available in the new Matt finish. Combining these decors brings an unprecedented range of natural style options to architectural designs, while preserving Trespa's goal to create façades that endure and continue to prove their quality. ■

\* NOTE Please contact your local sales representative for more information.  
 \*\*NOTE The test is executed at Trespa's laboratory.

**NEW WOOD DECORS**

**NW21 AUSTRALIAN PINE**

ALSO AVAILABLE IN MATT FINISH

