

helping
architects, builders
and home owners
achieve superior
results



... with Australian-made award winning windows & doors
for energy efficiency, sound protection & bushfire safety



The Passive House building standard challenges current mainstream building standards and methods, and provides an energy efficient alternative.

Passive House standard was developed in the late 1980's in Germany. A construction concept for cost effective structures that provide high levels of comfort while using very little energy for heating and cooling. This concept can be applied to any design, anywhere.

With high energy efficiency ratings, made to order Paarhammer products are a perfect fit for passive houses, or those wanting to improve the energy efficiency of their project. Paarhammer is a member of the Australian Passive House Association.



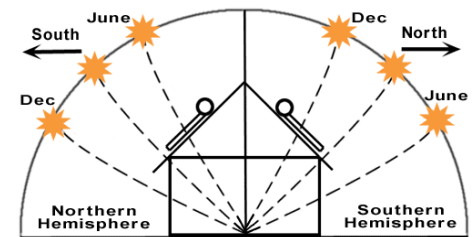
Under the Passive House accreditation process, the building envelope must achieve extremely low air leakage performance. Air leakages or drafts are year round issues - in winter, they allow valuable warm air to escape and unwanted cold air to enter; in summer, the reverse occurs.

Paarhammer triple glazed timber windows and doors combine superior frames, seals and craftsmanship, achieving the lowest U-value of any window made in Australia (with U-values from 0.8, and low air infiltration from 0.05).

Be aware that Australian ratings (WERS) differ from European ratings. Windows imported from Europe will have a lower U-value number, even though the windows made here in Australia (with a higher number) are the same, or even better, in energy efficiency. Please call if you have questions.

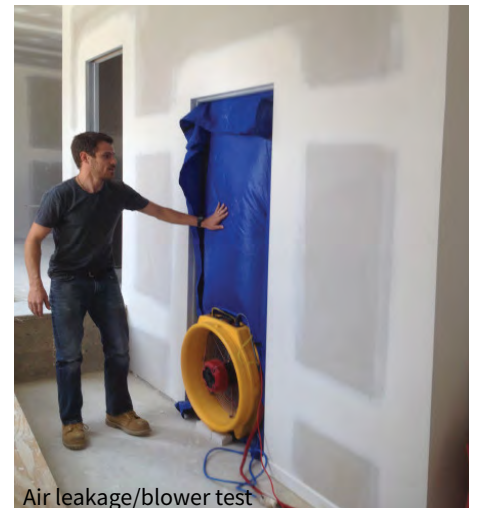
Passive House Windows & Doors

Since 1990, Paarhammer windows & doors have been setting the benchmark in energy efficiency in Australia.



Key measures to achieve Passive House performance criteria

- triple glazing
- excellent level of air tightness
- good indoor air quality
- insulation with minimal thermal bridging
- passive solar gains & internal heat sources



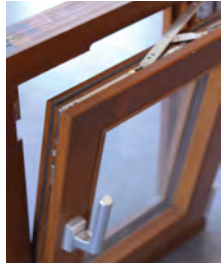
The hardware fittings are precision made in Germany. The multi-point metal-to-metal security hardware locks the door or window into the frame or sash.

There is a variety of glazing and timbers to choose from, including FSC® (Forest Stewardship Council®) certified timbers. Products can be ordered spray painted in a range of finishes or colours, or are available as our Wood-Alu range, with powder coated aluminium cladding.

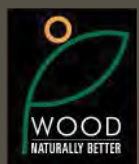


Key features:

- Energy efficient
- Sustainable timbers
- Noise reduction
- Australian made
- Custom-made
- Quality workmanship



Paarhammer Pty Ltd				Cool %	Heat %	Total Window - AFRC			
Updated 1-May-2019						Uw	SHGC	Tvw	Aif Inf
Window ID	Glazing	Cooling Stars	Heating Stars						
Tilt & Turn Window - Triple Glazed									
PAR-002-01	4/12/3/12/4	★★★★★	★★★★★★	66%	75%	1.8	0.35	0.38	0.05
PAR-002-02	4/12Ar/4S500/12Ar/4S500	★★★★★☆	★★★★★★	71%	76%	1.4	0.31	0.33	0.05
PAR-002-03	4EG/12Ar/3/12Ar/4S500	★★★★★☆☆	★★★★★★☆	78%	67%	1.5	0.19	0.29	0.05
PAR-002-04	4SB70XL/12Ar/3/12Ar/4ET	★★★★★★	★★★★★★	84%	65%	1.3	0.13	0.28	0.05
PAR-002-05	4SB70XL/12Ar/3SB70XL/12Ar/4SB70XL	★★★★★★☆☆	★★★★★★	85%	65%	1.2	0.11	0.19	0.05
Scandinavian Fir Fixed Window - Triple Glazed									
PAR-009-01	4/12Ar/3/12Ar/4	★★★★☆	★★★★★★☆	55%	65%	1.7	0.52	0.56	0.05
PAR-009-02	4PThrm/12Ar/3PThrm/12Ar/4PThrm	★★★★★☆☆	★★★★★★☆	79%	58%	0.8	0.23	0.40	0.05
PAR-009-03	4SB70XL/12Ar/3SB70XL/12Ar/4SB70XL	★★★★★★	★★★★★★	83%	52%	0.9	0.16	0.28	0.05
Bi-Fold Doors - Triple Glazed									
PAR-004-01	4/12/3/12/4	★★★★	★★★★★★	59%	60%	1.8	0.45	0.49	0.21
PAR-004-02	4EA/12Ar/3Clr/12Ar/4EA	★★★★★	★★★★★★	67%	62%	1.2	0.37	0.42	0.21
PAR-004-03	4SB70XL/12Ar/3/12Ar/4ET	★★★★★★	★★★★★★	82%	50%	1.1	0.17	0.36	0.21
PAR-004-04	4SB70XL/12Ar/3SB70XL/12Ar/4SB70XL	★★★★★★☆☆	★★★★★★	84%	49%	1.1	0.14	0.24	0.21
Scandinavian Fir Bi-Fold Door - Triple Glazed									
PAR-008-01	4SB70XL/12Ar/3SB70XL/12Ar/4SB70XL	★★★★★★☆☆	★★★★★★	84%	49%	1.0	0.14	0.24	0.21
Sliding Door - Triple Glazed									
PAR-006-01	5/12/3/12/5	★★★★	★★★★★★	60%	60%	1.8	0.45	0.49	0.31
PAR-006-02	5EA/12Ar/3Clr/12Ar/5EA	★★★★★	★★★★★★	67%	63%	1.2	0.38	0.43	0.31
PAR-006-03	4SB70XL/12Ar/3Clr/12Ar/4ET	★★★★★★	★★★★★★	82%	50%	1.1	0.17	0.37	0.31
PAR-006-04	4SB70XL/12Ar/3SB70XL/12Ar/4SB70XL	★★★★★★	★★★★★★	84%	49%	1.0	0.15	0.25	0.31
Scandinavian Fir Sliding Door - Triple Glazed									
PAR-007-01	4SB70XL/12Ar/3SB70XL/12Ar/4SB70XL	★★★★★★☆☆	★★★★★★	84%	50%	1.0	0.14	0.25	0.31



We are committed to a sustainable future with architectural flexibility and style.

Paarhammer Pty Ltd | 53 Haddon Drive | PO Box 26 | Ballan Victoria 3342 | Australia
tel - 03 5368 1999 | fax - 03 5368 1993 | direct call - 1300 655 920
email - mail@paarhammer.com.au



no draft no fire no noise

www.paarhammer.com.au