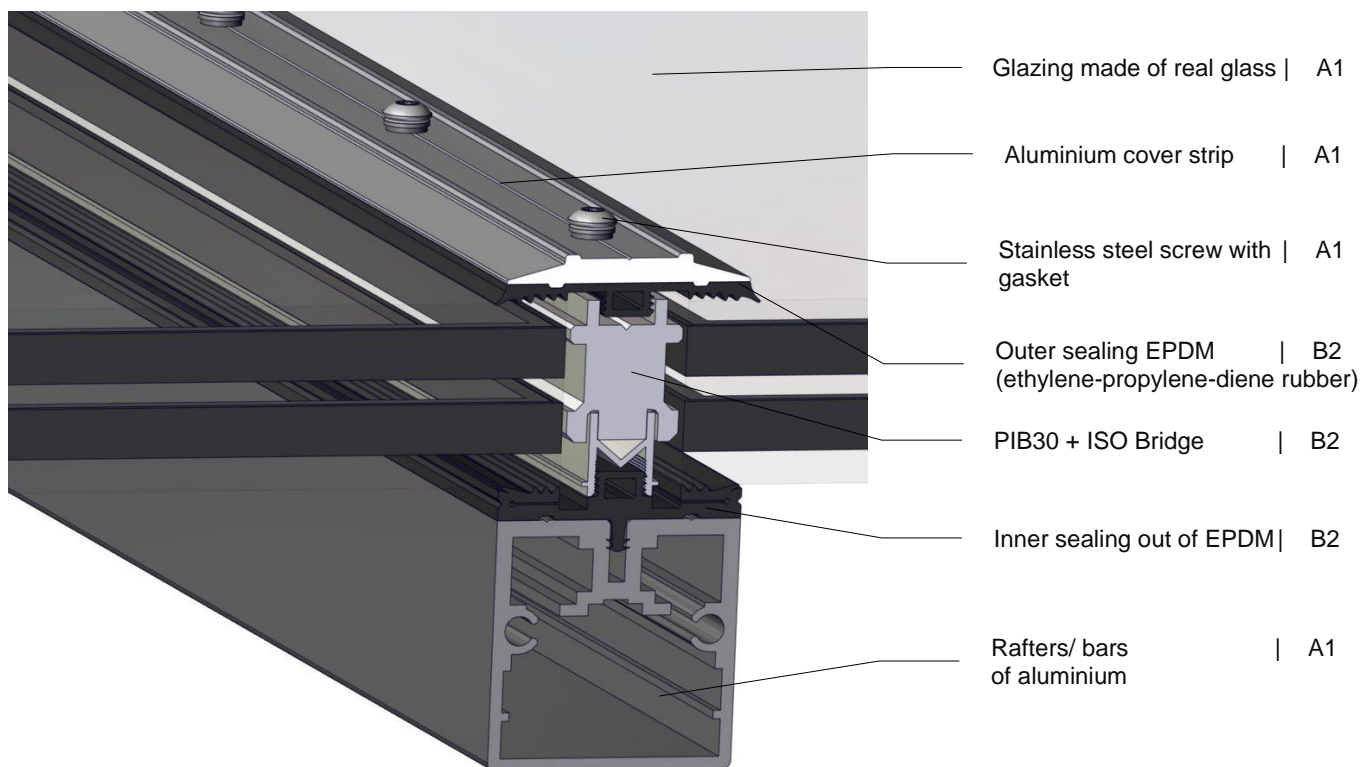


Basic information



Materials and building material classes:



- Construction available in different inclinations and variants
- Available in every dimension
- weather resistant and ultraviolet resistant
- Flaps are available with ventilation and SHEV function

Basic information

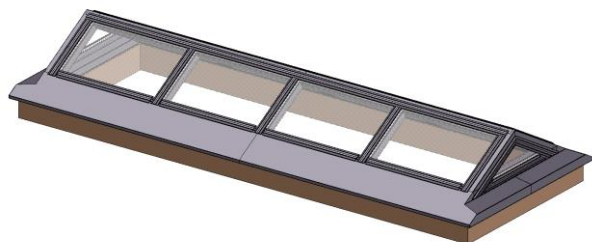
Installation variants:



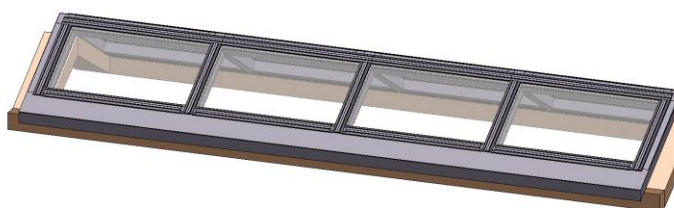
Pyramide



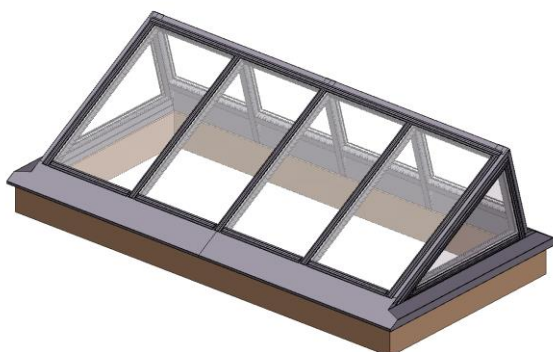
Hipped roof



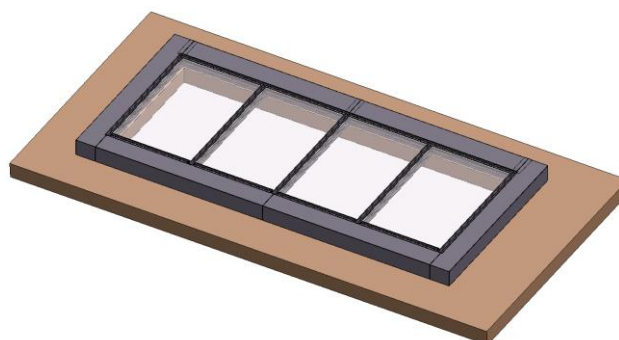
Shallow pitched roof



Shallow pitched roof as ridge



Shed roof/ Light on northern gable side



Inclined shed roof without gable

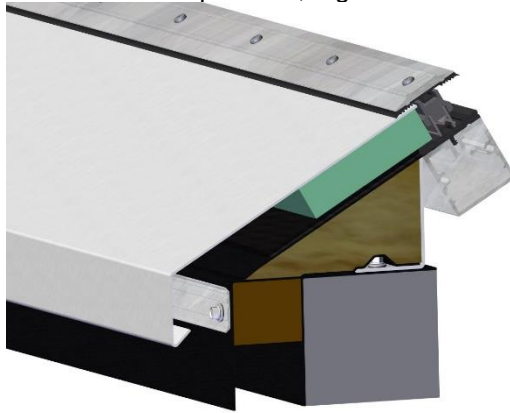


Special solutions

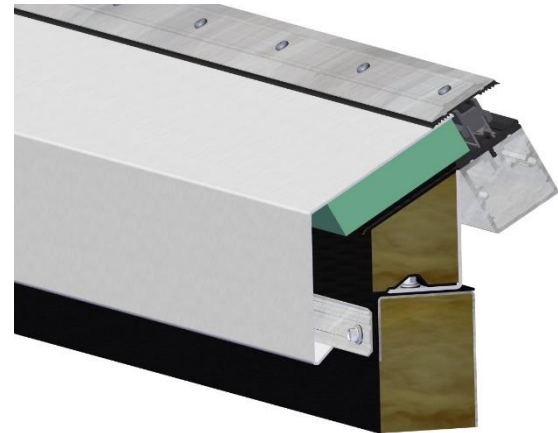
Basic information

Roof connection:

various connections possible, e.g.:

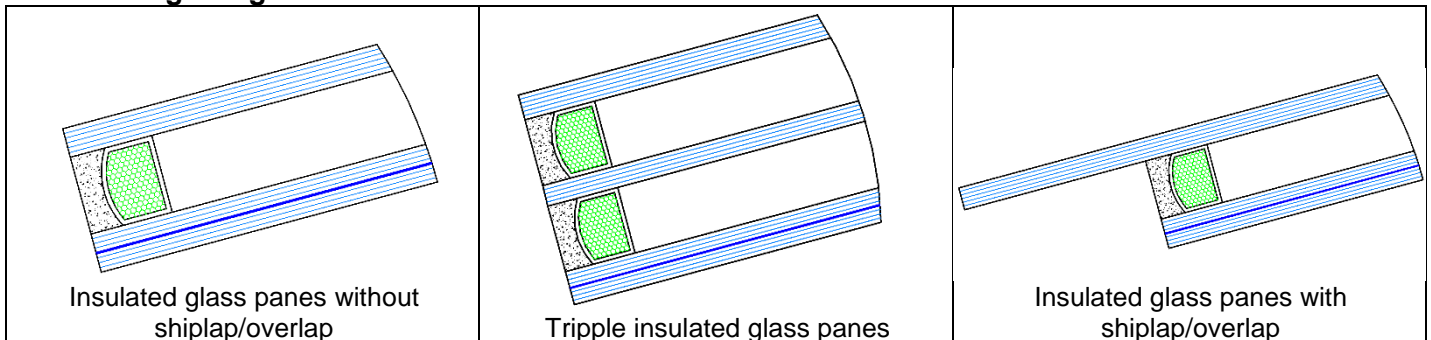


Eave end profile on concrete or wood upstand



Eave end profile on frame substructure

Variants of glazing:



Types of glazing:

- Float glazing
 - VSG – Multiple-vallet safety glass (DIN 1259 Bl.2)
 - ESG – Safety glass (DIN 1249 bzw. DE EN 12150)
 - Sun protection glazing
 - printed, matt light foil etc.
- In the case of overhead glazing the lower pane always has to be laminated safety glass (VSG)!

Basic information

PR60 flap:



Variants of openers:

- Pneumatic zylinder
 - SHEV
 - daily ventilation



- Electro motor 24V
 - SHEV
 - daily ventilation



- Electro motor 230V
 - daily ventilation



- Chain drive motor
 - SHEV 24V
 - daily ventilation 230V

