

SV-X150



Compact Glass Sliding System

Technical Details

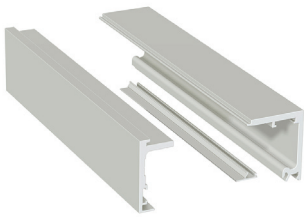
- Compact sliding door system
- Suitable for 10, 12 and 13.52mm glass
- Can support up to 150kg glass doors
- System has been tested to 100,000 cycles
- Variety of braking systems
- Tracks can be mounted to the wall, ceiling or recessed into the ceiling
- Tracks available with a glazing pocket for fixed panels.

Available Finishes

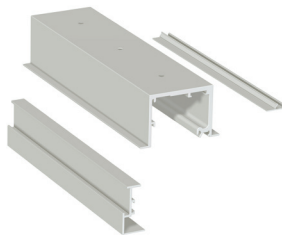
- Satin Anodised Aluminium



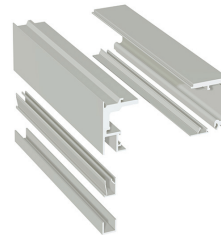
TRACK OPTIONS



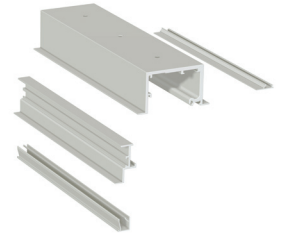
SV-X150-TRACK-1
Wall/Ceiling Mount



SV-X150-TRACK-2
False Ceiling Mount



SV-X150-TRACK-3
Wall/Ceiling Mount
With Fixed Panel



SV-X150-TRACK-4
False Ceiling Mount
With Fixed Panel

BRAKE OPTIONS



Soft Pro
SV-X150-SET-10
(Double Soft Pro)



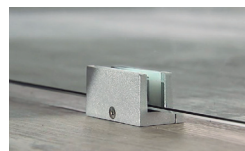
Retaining Brake
SV-X150-SET-1
(Double Retaining Brake)



Anti-Shock
SV-X150-SET-3
(Double Anti-Shock)

OTHER OPTIONS

- SV-X150-SET-2 - 1 x Anti-Shock & 1 x Retaining Brake
- SV-X150-SET-7 - 1 x Retaining Brake & 1 x Soft-Pro
- SV-X150-SET-8 - 1 x Anti Shock & 1 x Soft-Pro



SV-X-FG
Floor Guide

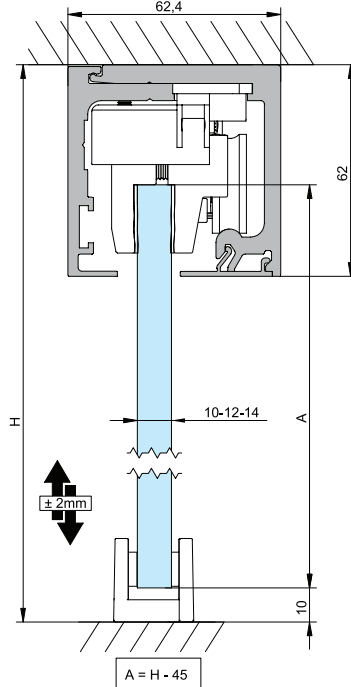
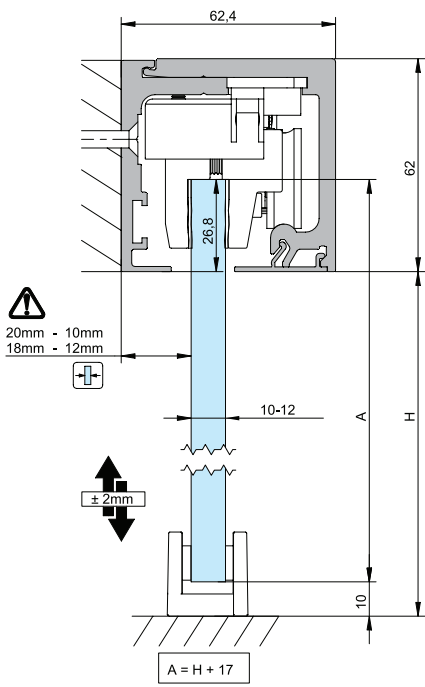


SV-X150-T1-EC
End Caps

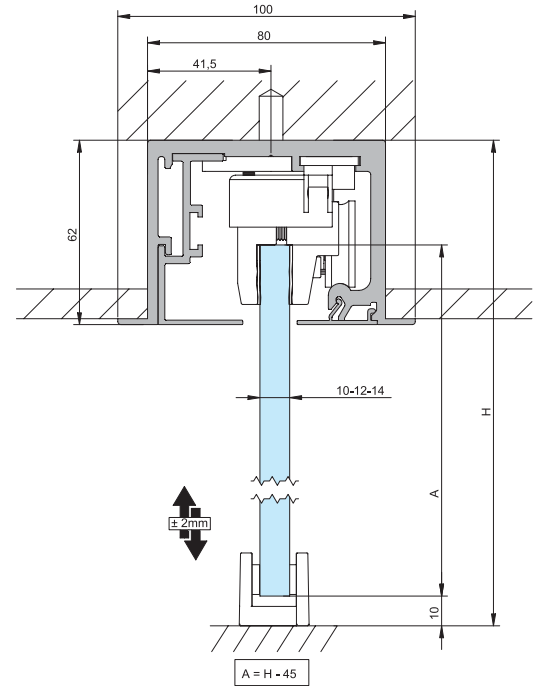
SV-X150



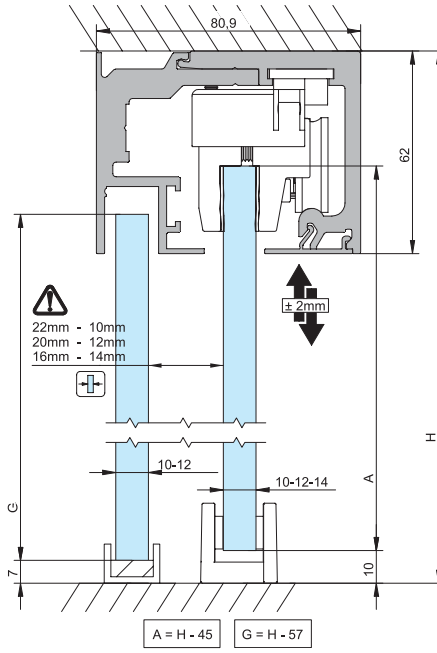
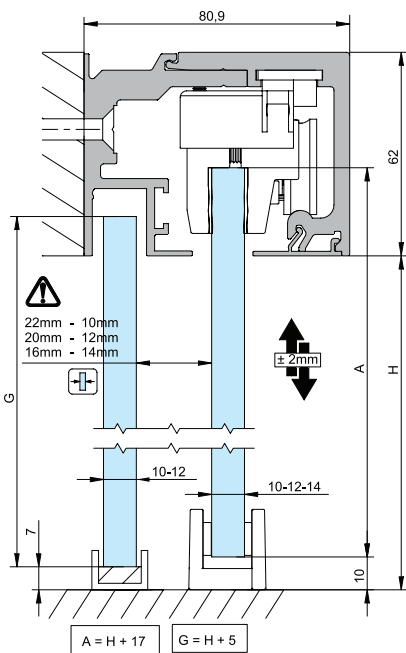
Track 1
 Wall or Ceiling Mount



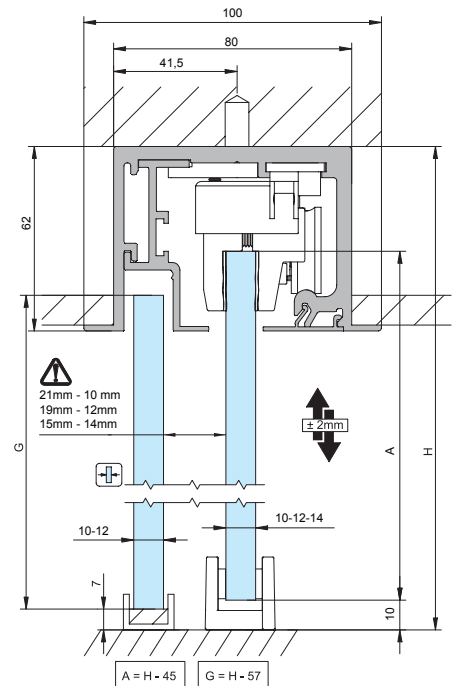
Track 2
 False Ceiling Mount



Track 3
 Wall or Ceiling Mount w/ Fixed Panel



Track 4
 False Ceiling Mount w/ Fixed Panel



Installation Possibilities

