

REUSE  
PROTECT  
PRESERVE



Suitable for installation with:



Roller  
Shades



Panel Glide  
Shades



Vertical  
Shades



ROLLER SHADE SOLAR CONTROL FABRIC



# ACOUSTIS

MADE FROM COATED FIBRE GLASS  
RECYCLABLE

ACOUSTIC ABSORPTION  
ROLLER SHADE SOLAR CONTROL FABRIC

NON METALLISED



# ACOUSTIS

Non Metallised

- Openness Factor . **Of** •
- Ultraviolet Transmittance . **Tuv** •
- Light Transmittance . **Tv** •
- Light Reflectance . **Rv** •
- Solar Transmittance . **Ts** •
- Solar Reflectance . **Rs** •
- Solar Absorption . **As** •
- G Value . **G tot** •

**1%**

openness factor

**250 cm**

fabric width

**0.55 mm**

thickness

**430 g/m<sup>2</sup>**

weight

THIS FABRIC IS MADE FROM COATED FIBRE GLASS  
ACOUSTIC ABSORPTION FACTOR  $a_w$  : 0.35 to 0.8

## FENESTRATION PROPERTIES

	OF	Tuv	Tv	Rv	Ts	Rs	As	G Value	
								C Glaze	D Glaze
<b>WHITE</b>	1%	0%	17%	81%	18%	71%	11%	0.27	0.13
<b>LINEN</b>	1%	0%	15%	71%	17%	64%	19%	0.31	0.16
<b>LIGHT GREY</b>	1%	0%	9%	45%	12%	41%	47%	0.41	0.22
<b>PEARL</b>	1%	0%	6%	38%	9%	37%	54%	0.43	0.23
<b>GREY</b>	1%	0%	3%	27%	4%	24%	72%	0.48	0.26
<b>CHARCOAL</b>	1%	0%	0%	5%	0%	5%	95%	0.55	0.31

Data is current at time of printing. Please check website for most current information.

### Absorption Factor

The acoustic absorption capacity of the material is expressed by its acoustic absorption factor  $a_w$  in the 3 octave3 bands: bass (below 200 Hz), medium (200 to 2000 Hz), treble (above 2000 Hz). **A high absorbing material will tend towards 1.**

### Care Instructions

Clean with a sponge or soft brush dipped in soapy water. Leave roller shade down until completely dry.

### Width

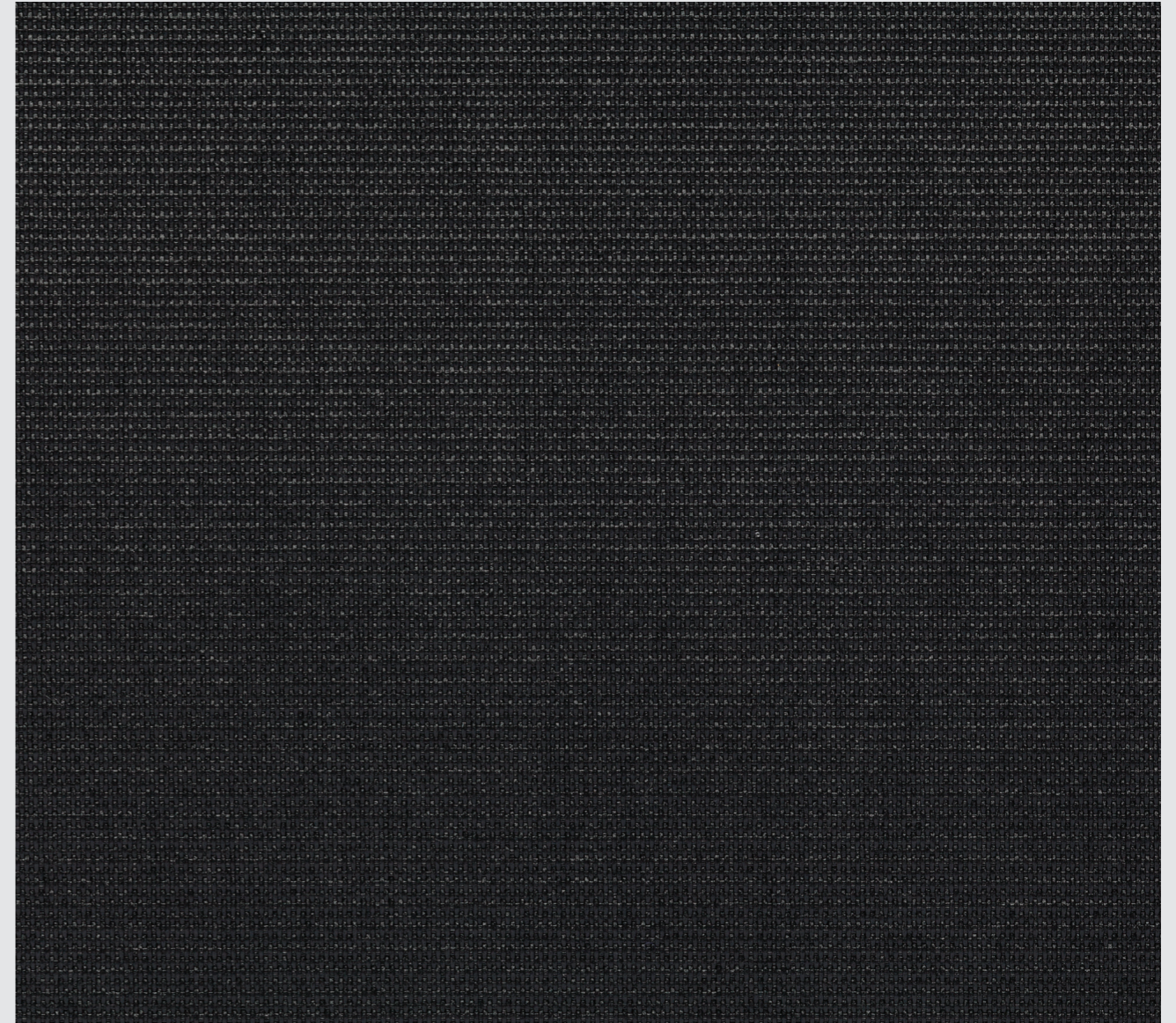
Maximum Roller Shade width: 2500 mm.

### Fabric Warranty

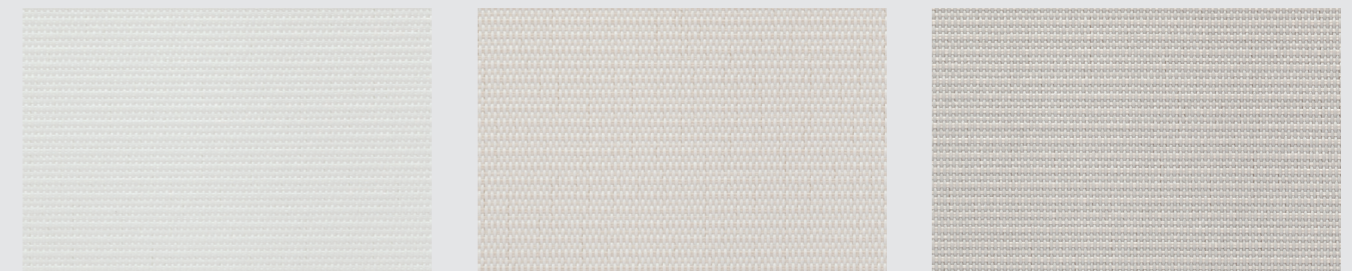
5 Years (internal use only).

### Railroad

This fabric can be railroaded.



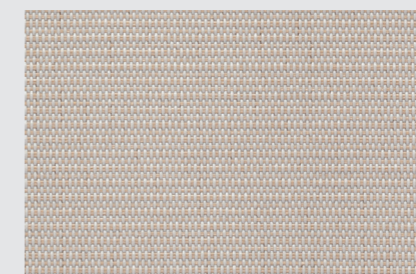
CHARCOAL 3030



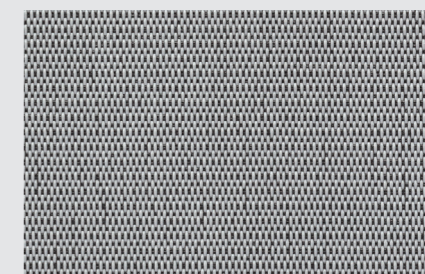
WHITE 0202

LINEN 0220

LIGHT GREY 0720



PEARL 0710



GREY 0730



Order a memo sample [info@climateredymfabrics.com.au](mailto:info@climateredymfabrics.com.au)