



*Signature*

READY-TO-WEAR  
BY SIGNATURE®

# READY-TO-WEAR AXI

Signature Floors offers the enhanced performance of quality commercial grade Axminster carpet with the flexibility and convenience of our ‘off the shelf’ range.

The comprehensive range of designs from the experienced Signature Design Studio includes coloured graphics ideal for commercial installations. Ready-to-Wear AXI is suitable for hospitality, education, retail, office and any space where exceptional performance is required.

Ready-to-Wear AXI is the perfect choice for both refurbishments and new projects, offering a fast cost-effective solution, with great looks and long lasting value.

Alban 534

Astor 620

Axis 774

Echo 127

Oxi 722

Opaz 765

Halo 188

Thistle 270

Twill 994

Nova 655

Bermuda 601

Ventura 510

Imprint 856

Keppel 890

Thatch 399

Atomic 616

*Cut pile carpets, particularly ‘plush pile’ will in some circumstances exhibit the condition known as ‘shading, watermarking or pile reversal.’ A cut pile carpet that has ‘shaded’ will show areas lighter or darker than the surrounding carpet pile. The variation is caused by the reflection of light from pile tufts which come to lay in different directions. It does not affect the wear or durability of the carpet and since it is beyond the control of the manufacturer, it is not recognised as a manufacturing flaw or fault.*

All edges to be cut & seam sealed prior to installation.



## Oxi 722



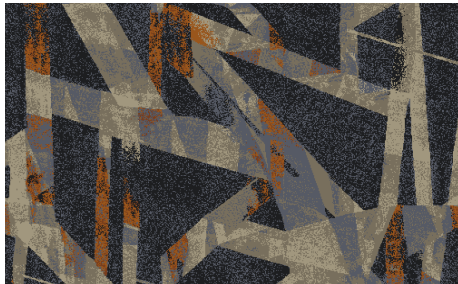
80% wool &  
20% anti-static nylon 6.6

<b>Carpet width:</b>	364cm set match	<b>Quality:</b>	40oz 2 ply 8mm
<b>Design width:</b>	182cm drop match	<b>Yarn:</b>	80% wool 20% nylon 6.6
<b>Design length:</b>	200cm	<b>Backing:</b>	polypropylene





Thistle 270



**80% wool &  
20% anti-static nylon 6.6**

<b>Carpet width:</b>	364cm set match	<b>Quality:</b>	40oz 2 ply 8mm
<b>Design width:</b>	182cm drop match	<b>Yarn:</b>	80% wool 20% nylon 6.6
<b>Design length:</b>	200cm	<b>Backing:</b>	polypropylene



Bermuda 601



**80% wool &  
20% anti-static nylon 6.6**

<b>Carpet width:</b>	364cm set match	<b>Quality:</b>	40oz 2 ply 8mm
<b>Design width:</b>	91cm drop match	<b>Yarn:</b>	80% wool 20% nylon 6.6
<b>Design length:</b>	130cm	<b>Backing:</b>	polypropylene





Imprint 856



80% wool &  
20% anti-static nylon 6.6

<b>Carpet width:</b>	364cm set match	<b>Quality:</b>	40oz 2 ply 8mm
<b>Design width:</b>	182cm set match	<b>Yarn:</b>	80% wool 20% nylon 6.6
<b>Design length:</b>	180cm	<b>Backing:</b>	polypropylene



Alban 534



80% wool &  
20% anti-static nylon 6.6

<b>Carpet width:</b>	364cm set match	<b>Quality:</b>	40oz 2 ply 8mm
<b>Design width:</b>	182cm set match	<b>Yarn:</b>	80% wool 20% nylon 6.6
<b>Design length:</b>	200cm	<b>Backing:</b>	polypropylene





Astor 620



**80% wool &  
20% anti-static nylon 6.6**

<b>Carpet width:</b>	364cm set match	<b>Quality:</b>	40oz 2 ply 8mm
<b>Design width:</b>	182cm set match	<b>Yarn:</b>	80% wool 20% nylon 6.6
<b>Design length:</b>	200cm	<b>Backing:</b>	polypropylene



Keppel 890



**80% wool &  
20% anti-static nylon 6.6**

<b>Carpet width:</b>	364cm set match	<b>Quality:</b>	40oz 2 ply 8mm
<b>Design width:</b>	182cm set match	<b>Yarn:</b>	80% wool 20% nylon 6.6
<b>Design length:</b>	160cm	<b>Backing:</b>	polypropylene





Thatch 399

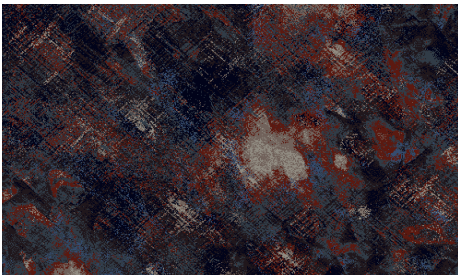


**80% wool &  
20% anti-static nylon 6.6**

<b>Carpet width:</b>	364cm set match	<b>Quality:</b>	40oz 2 ply 8mm
<b>Design width:</b>	91cm drop match	<b>Yarn:</b>	80% wool 20% nylon 6.6
<b>Design length:</b>	112cm	<b>Backing:</b>	polypropylene



Echo 127



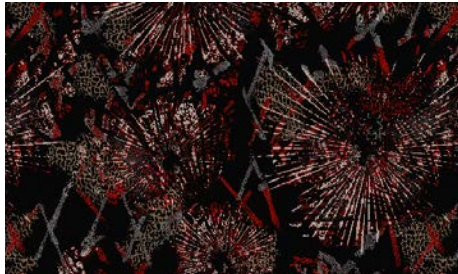
**80% wool &  
20% anti-static nylon 6.6**

<b>Carpet width:</b>	364cm set match	<b>Quality:</b>	40oz 2 ply 8mm
<b>Design width:</b>	182cm set match	<b>Yarn:</b>	80% wool 20% nylon 6.6
<b>Design length:</b>	200cm	<b>Backing:</b>	polypropylene





Opaz 765



80% wool &  
20% anti-static nylon 6.6

<b>Carpet width:</b>	364cm set match	<b>Quality:</b>	40oz 2 ply 8mm
<b>Design width:</b>	182cm set match	<b>Yarn:</b>	80% wool 20% nylon 6.6
<b>Design length:</b>	175cm	<b>Backing:</b>	polypropylene



Twill 994



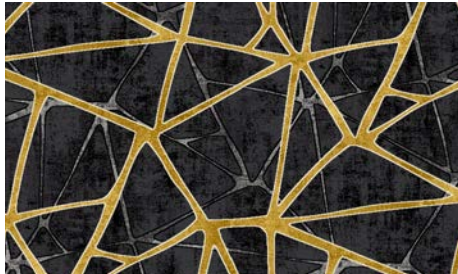
80% wool &  
20% anti-static nylon 6.6

<b>Carpet width:</b>	364cm set match	<b>Quality:</b>	40oz 2 ply 8mm
<b>Design width:</b>	182cm drop match	<b>Yarn:</b>	80% wool 20% nylon 6.6
<b>Design length:</b>	162cm	<b>Backing:</b>	polypropylene





Ventura 510

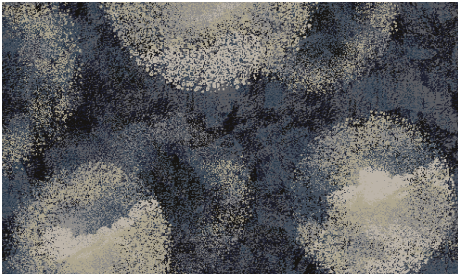


80% wool &  
20% anti-static nylon 6.6

<b>Carpet width:</b>	364cm set match	<b>Quality:</b>	40oz 2 ply 8mm
<b>Design width:</b>	182cm drop match	<b>Yarn:</b>	80% wool 20% nylon 6.6
<b>Design length:</b>	200cm	<b>Backing:</b>	polypropylene



Halo 188



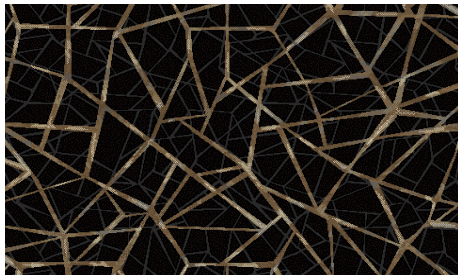
80% wool &  
20% anti-static nylon 6.6

<b>Carpet width:</b>	364cm set match	<b>Quality:</b>	40oz 2 ply 8mm
<b>Design width:</b>	182cm drop match	<b>Yarn:</b>	80% wool 20% nylon 6.6
<b>Design length:</b>	183cm	<b>Backing:</b>	polypropylene





Atomic 616



80% wool &  
20% anti-static nylon 6.6

<b>Carpet width:</b>	364cm set match	<b>Quality:</b>	40oz 2 ply 8mm
<b>Design width:</b>	182cm drop match	<b>Yarn:</b>	80% wool 20% nylon 6.6
<b>Design length:</b>	181cm	<b>Backing:</b>	polypropylene



Axis 774



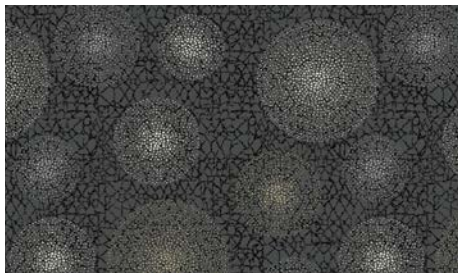
80% wool &  
20% anti-static nylon 6.6

<b>Carpet width:</b>	364cm drop match	<b>Quality:</b>	40oz 2 ply 8mm
<b>Design width:</b>	121cm drop match	<b>Yarn:</b>	80% wool 20% nylon 6.6
<b>Design length:</b>	140cm	<b>Backing:</b>	polypropylene





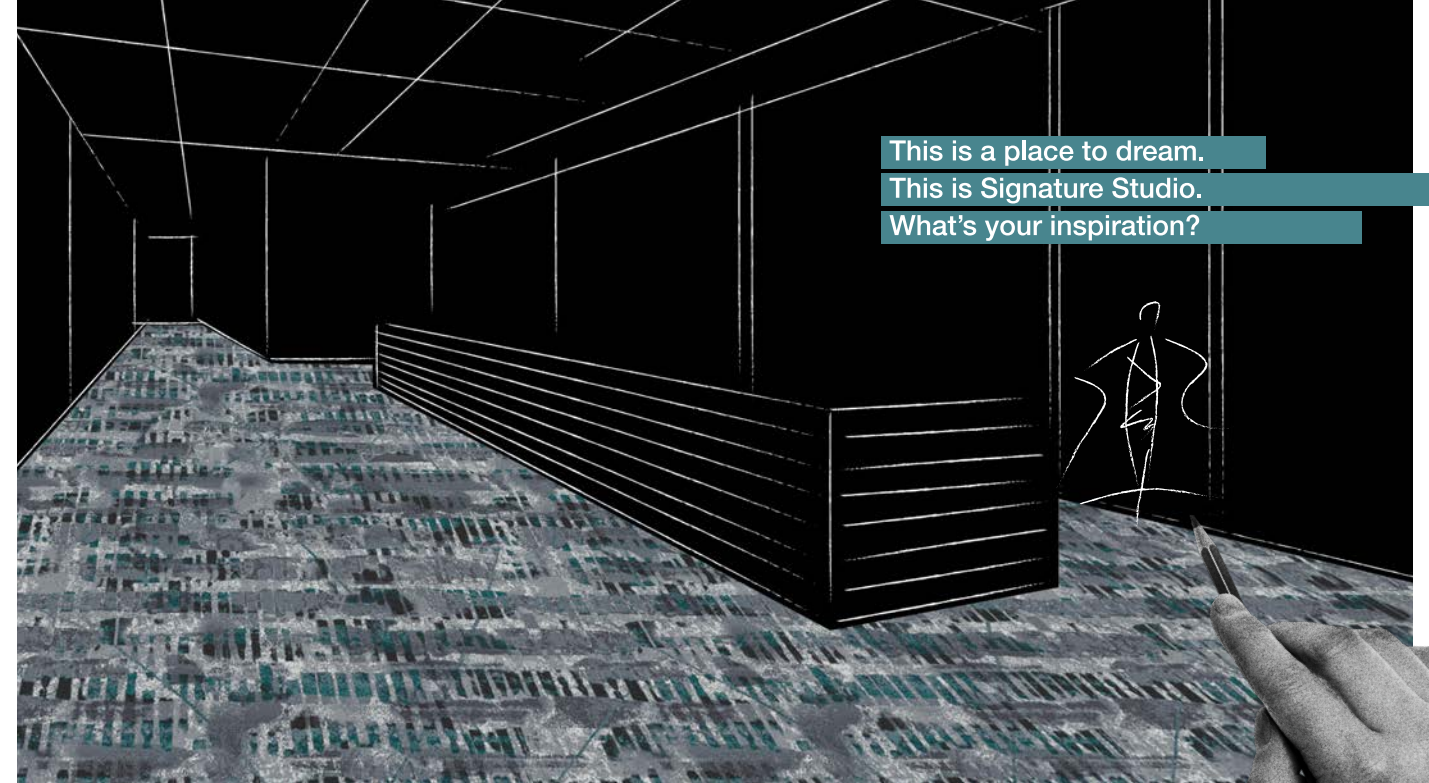
Nova 655



**80% wool &  
20% anti-static nylon 6.6**

**Carpet width:** 364cm set match  
**Design width:** 182cm set match  
**Design length:** 180cm

**Quality:** 40oz 2 ply 8mm  
**Yarn:** 80% wool 20% nylon 6.6  
**Backing:** polypropylene



## Design services

We are a leading designer and manufacturer of quality carpets for the Australian and New Zealand commercial market. We've been doing it for over a decade and we make finding the right carpet for your next project a breeze.

Our talented team of textiles designers are here to help. Simply chose one of our in-stock carpets and see how it looks in a range of 3D room visualisations and layouts that have been designed specifically for you.

[signaturefloors.com.au/ready-to-wear](https://signaturefloors.com.au/ready-to-wear)

## Bring your own inspiration

Signature Studio is a place to dream. Enter a space of ideas and exploration. Whether you are inspired by nature, excited by abstraction, or moved by the built world our talented team of designers are here to bring your designs to life, or let us inspire you with something new that meets your brief.

[signaturefloors.com.au/studio](https://signaturefloors.com.au/studio)

SIGNATURE  
**STUDIO**





Signature Floorcoverings Pty Ltd  
ABN 45 007 172 938

Australia:  
PO BOX 1122, Epping VIC 3076, Australia  
13 Wurundjeri Drive, Epping VIC 3076, Australia  
Tel: 1800 150 554 Fax: 03 9401 0866  
**signaturefloors.com.au**

New Zealand:  
Tel: 0800 150 555  
**signaturefloors.co.nz**

Colours and designs in this brochure might slightly vary from real product due to printing techniques. All edges to be cut & seam sealed prior to installation.

Specifications are subject to change without notice. ©signaturefloors 09/2019