



Bringing concrete to life with colour



Coloured
concrete

ideas and inspirations

colours, patterns, textures and application

Creative, inviting and invigorating

Full depth coloured concrete - the ideal colouring tool for any landscape

Like oils on a blank canvas, coloured concrete brings landscapes to life and truly captures a designer's individuality and flair.

Referred to as 'integral colouring', 'full depth colouring' or 'colour through concrete' this well proven method involves the addition of special CCS pigments to the wet concrete, prior to placement.

Coloured, shaped and formed into a variety of finishes and styles, full depth coloured concrete is versatile and functional.

It offers the designer and builder the great advantages of long term durability, low maintenance, fast installation times and an attractive natural finish.

Recent innovations in CCS pigment blending technology and concrete finishing techniques provide designers with even greater scope to use contemporary colours and interesting textures.

A variety of projects are featured in the following pages where premixed and precast concrete companies, designers and applicators have combined their skills to utilise CCS pigment concentrates in creating areas of function and beauty.

Please use these projects and some of the finishing techniques demonstrated towards the back of this book as inspiration for your next project.



1 Foreground pathway panels of contrasting colours (CCS Black and CCS Cashew) were utilised on the Cairns Esplanade. Landscape Architect: Tract Consultants, Brisbane.



2 A tiled border together with coloured concrete (CCS Black 21). Project Walsh Bay Apartments, Sydney.



3

3 Coloured concrete was laid in a staged manner to create contrasting colours in a small area. CCS Corn, CCS Pewter and CCS Bluestone. Project: James Street, New Farm. Architect: Cottee Parker Architects, Brisbane.



4

4 This cafe floor was first coloured, (CCS Biscuit and CCS Earth Brown) placed and then subsequently ground and polished to expose the natural aggregates in a smooth finish.

5 Multiple colours (CCS Onyx, CCS Ghost Gum and CCS Driftwood) in a simple laying pattern match in nicely with surrounding artwork and fixtures. Griffith University, Southbank. Landscape Architect: Jeremy Ferrier Landscape Architects.



5

6 A striking entrance has been created with CCS Cobalt Blue (colour hardener), CCS Honeycomb, CCS Biscuit and CCS Snow (with off-white cement). Project: Surfers Paradise Fire Station. Designer: Project Services, Department of Public Works.



6

Adding charm, character and appeal

Walkways and pathways

The use of coloured concrete for walkways and pathways increases the charm, character and appeal of pedestrian precincts and urban parklands.

Multiple colours can be combined with simple or fancy laying patterns to add variety. Further use of various finishing techniques, such as exposed aggregate can add even greater diversity to the area.



1 Coloured concrete has been used to clearly define pathways of travel whilst also highlighting a prominent entry point. CCS Biscuit and CCS Uluru integrate beautifully with existing stone, while CCS Grape was used to create a darker more purplish contrasting hue. Project: University of Queensland, St Lucia. Landscape Architect: Tract Consultants, Brisbane.



2 Local Gold Coast artist Mal Lecke was consulted by project developers to recommend colours and themes that were representative of the local area. CCS Lychee and CCS Panther were ultimately used and the concrete was subsequently sandblasted to reveal the white stone.



3 Bold contrasts in colour using CCS Lemon Cream and CCS Black 21 create a contemporary walkway through this regional park. Project: Seventeen Mile Rocks Riverside Park, Brisbane. Design Team: Brisbane City Council City Design Group.



5 Local plant varieties were pressed into the wet coloured concrete and then removed to create a permanent natural surface impression. Concrete coloured with CCS Sandplain.



4 The use of exposed sections and good directional design makes for a modern, practical walkway. Colours: CCS Onyx 21, CCS Parchment and off-white cement. Project: Ephraim Island, Gold Coast. Architect: EDAW Australia



6 The character and appeal of this lakeside walkway has been enhanced through the use of multiple colours, CCS Caramel, CCS Honeycomb, CCS Desert Buff, CCS Pewter and CCS Earth Brown.

Making communities a better place to live, work and relax in



1

1 An interesting free flowing natural texture can be created in coloured concrete by using the mega mats stocked by CCS. The pattern is created by placing the mega mat on the surface of the coloured concrete whilst it is still in its 'wet' state.



2

2 Another mega mat textured job – this time a 'salt rock' finish was used at Sydney's Taronga Park Zoo. CCS Morocco was used to colour the concrete.

4 This weathered stone look was achieved with the seamless CCS Sierra stone mega mat.



3

3 A rock salt finish goes nicely with the bush and beach surrounds of this resort in Noosa, Qld. Colour: CCS Onyx 21.



4



5

5 A template with a friendly greeting was placed on the dry coloured concrete and then sandblasted to permanently etch the message into the surface. CCS Desert Buff was used to colour the pathway.



6

7 Footprints of baby Asian Elephants have been set forever in concrete for all to enjoy at the Taronga Park Zoo. Colour: CCS Driftwood.

6 CCS Corn and CCS Onyx 21 delineate a restaurant dining precinct from the adjoining harbourside walkway. Concrete seating coloured in CCS Pewter.



7



8

8 Coloured concrete helps define pathways for pedestrians. CCS Driftwood was used in the concrete together with charcoal paver inserts.

Blending nature and urbanscapes with colour and form



3 Secondary hand trowelling of the joints provides a coloured and textured contrast on this pathway. CCS Driftwood was used to colour the concrete.



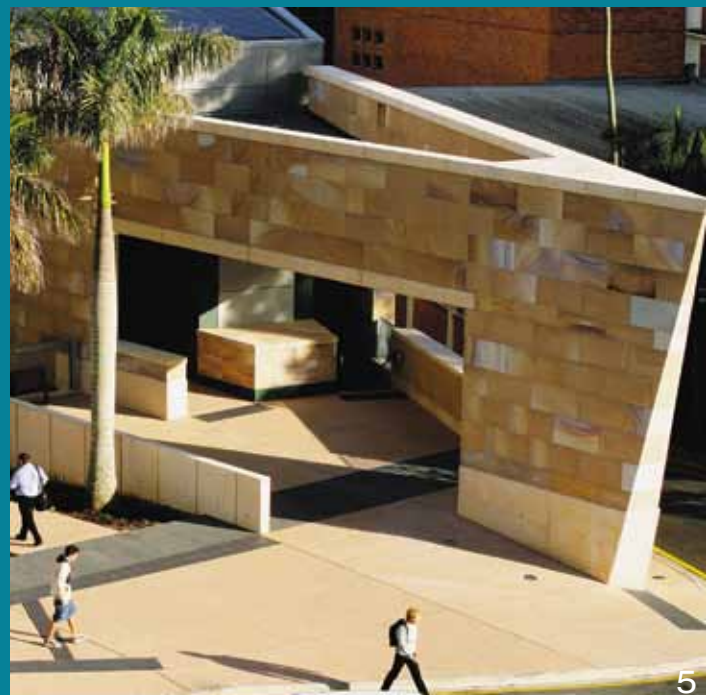
1 Coloured pathways add to the quality of family excursions. CCS Caramel and a predominantly white stone were used to create a coloured exposed finish.



4 A stepping stone water feature has been created using coloured pre-cast panels (using CCS Parchment). Project: Ephraim Island. Landscape Architect: EDAW Australia.



2 An 'ocean floor' texture complete with shells was created in this beachside walkway using CCS textured rollers. CCS mega mats are also available to create a similar finish. CCS Driftwood and CCS Desert Buff were used to colour the concrete.



5 Pathways coloured with CCS Biscuit and CCS Onyx 21 meld in beautifully with the sandstone facade of this building. Landscape Architect: Tract Consultants.

Encourage all to celebrate and live life to its fullest

Enjoy the feeling of two wheels under your feet and the wind in your face.

Coloured concrete is an excellent medium for bikeways – providing the cyclist with a smooth surface free of bumps and obstacles.

The use of colour in the bikeway inevitably adds to the ambience of parks that it flows through whilst providing an uplifting and inspirational backdrop for the cyclist.



1 Colourful bikeways and pedestrian paths add to a suburban outdoor experience. CCS Caramel was used to colour the concrete.



2 Swirling bikeways in attractive colours encourage families to cycle together. CCS Golden Brown and CCS Biscuit were used to colour the concrete.

4 Cycle power can be both quicker and cleaner. A two wheeled commuter beats the traffic crush using a bikeway coloured in CCS Biscuit. Landscape Architects: Brisbane City Council's City Design Group.



3 A Sunday morning ritual and reward – cycle first, coffee and chat afterwards. CCS Caramel provides a colourful coffee shop floor backdrop whilst the adjoining footpath is coloured with Desert Buff.



Elegance, sparkle and functionality

Polished concrete interiors

Polished concrete is fast becoming the flooring of choice in many domestic, commercial and retail settings. Its smooth, high lustre sheen gives the appearance of natural stone - at a far more economical price.

Whether you choose a coloured polished finish or a ground/honed finish, you will get a stylish, elegant surface that is both hygienic and easy to clean.





2 Special blends of CCS pigments were combined with natural stone, in this concrete blend. Both were revealed to their full beauty when the concrete surface was subsequently polished and then sealed.

5 CCS Alpine combined with black and gold local stone gives this cafe a cool, clean and crisp look.



3 This contemporary bar room floor was created by first colouring it with CCS Custard, machine trowelling the surface and then sealing it with CCS Armourseal.

6 The Direct Factory Outlet Centre in Brisbane incorporated polished concrete within the main thoroughfare areas. A distinctive but similar coloured aggregate to CCS Lemon Cream was used to provide the contrast. Architect: S.P.L.A.T. Qld.



4 A combination of CCS Colours, special stones and placement technique resulted in a series of contrasting coloured floor panels. All were subsequently machine polished and then sealed.



6

Soften, embellish and add diversity to sky lines

In situ – off form buildings and structures

Coloured concrete can be delivered on site and placed in forms to create building facades and walls to give them a long lasting, natural coloured look without the need for re-application of paints or coatings.

Incorporating colour to otherwise dreary, grey walls brings the urban jungle to life!

1 The exterior panels were manufactured on site and utilise project specific CCS colour blends to provide the green and beige type colours. Architect: Peddle Thorp Architects.





2 This energy efficient building facade was created using CCS Snow pigment in off-white cement to provide a permanent, low maintenance finish. CCS Black 21 was used to provide a low glare, functional path and driveway. Architect: Atelier Group Qld.



3 Special CCS colour blends were developed in conjunction with the project architects to create a facade that blends well with surrounding infrastructure. Project: James Foot Building, University of Queensland. Architect: Wilson Architects.

1 The light coloured pre-cast panels of this building were manufactured off-site using a low dose of CCS Corn with off-white cement. The lower level of the facade was created on-site with a special CCS Grey Amethyst pigment blend.



1



2



3

2 Special CCS pigment blends were developed in conjunction with project architects to create coloured panels that blended in with surrounding sandstone structures. CCS Mountain Rose, CCS Mushroom Cap and CCS Silvery Moonlight were used. Architects: Donovan Hill and Peddle Thorp Architects.

3 The subdued tone of this special CCS blended colour gives this faculties building at the Queensland University of Technology a natural appearance that blends well with surrounding bushland.

Explore and push the boundaries of pre-cast elements

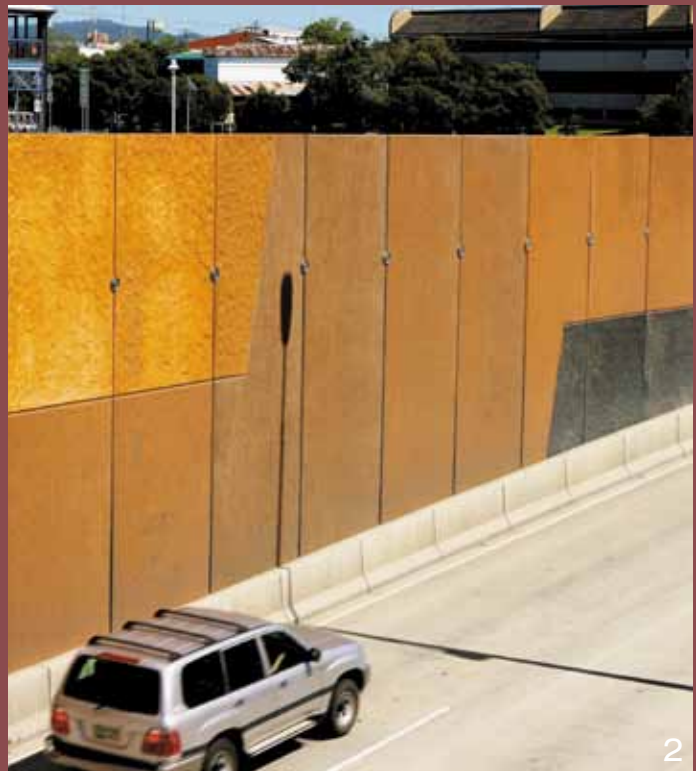
Pre-cast buildings and structures

Feel free to think outside the square and utilise textures, stone, dimension and colour to liven up an otherwise plain structure.

The use of coloured, pre-cast panels is a cost effective, attractive and well developed method for finishing buildings.

The panels are manufactured under factory conditions and are quite commonly subjected to secondary processing techniques such as sand blasting, bush hammering, honing or acid etching to create a colourful but naturally textured finish.

The panels are then delivered to site for fixing to the exterior of the building.



2 Concrete sound barriers make life a lot easier for surrounding homes and enhance the commuting experience. An antique finish was achieved on the top left with an off-form mould and the darker panels in the centre were sandblasted. CCS Honeycomb and CCS Black 21 pigments were used to colour the panels.

1 Paper, rock or scissors? These uniquely designed pre-cast panels were achieved with the use of CCS Parchment in off-white cement and using specially designed moulds that gave an amazingly unique 'crumpled paper' look.
Architect: Edaw Australia.



1 A stunning contrast between black and white using CCS Snow in off-white cement for the facade and CCS Black 21 in the entrance walkway. Architect: Richard Kirk Architects.



2

2 A wonderful example of how a simple but highly effective pre-cast panel design adds character to a building facade. Pre-cast panels coloured with CCS Honeycomb.



3

3 Combine function with form. Sound barrier walls at a busy intersection were coloured with CCS Eucalyptus and then textured with a CCS mega stamping mat. Subsequent plantings will grow with time to blend with the panels to create a unified, unobtrusive but functional sound barrier.



4

4 Patterns and textures were embedded into the concrete at the pre-cast concrete plant using specially designed forms and then erected on site. Colour: CCS Honeycomb.



5

5 Colour combinations reminiscent of natural sandstone yet in bold geometric form were used to create these exterior panels. A combination of several CCS pigment blends were created in conjunction with project architects and cast off site. (CCS Mountain Rose, CCS Worstead Tan, CCS Mushroom Cap and CCS Silvery Moonlight) Architects: Donovan Hill and Peddle Thorp Architects.

Mimic and complement nature's wonderful variety with audacious use of colour, form and rustic finishes

Retaining and feature walls

Make a strong statement with the use of coloured concrete and unique finishes for your next retaining or feature wall.

Eliminate the need for coatings and paints and create a more natural look using the CCS pigments to fully colour the concrete.

Pre cast or in-situ cast panels can be coloured, moulded, imprinted and designed to your specifications.



1 This uniquely designed wall was created with the use of CCS Bonsai (together with a reactive stain) and distinctively formed shapes made from polystyrene. Landscape Architect: Urban Art Projects.



2 Panels coloured with CCS Lemon Cream, CCS Tangerine (special blend) and CCS Black 21 combine to provide a bright, contemporary off-form wall. Architect: John Mainwaring (JMA).



3 Local plant life has been encapsulated forever in this coloured feature wall. CCS Green Earth (special blend) was chosen to replicate the ambience of nearby rainforests. Landscape Architect: Landplan.



4 Coloured shotcrete is an extremely versatile material for providing wall stabilisation. Varying textures were created by altering the flow of material from the shotcrete nozzle. CCS Suntan was used to colour the concrete.



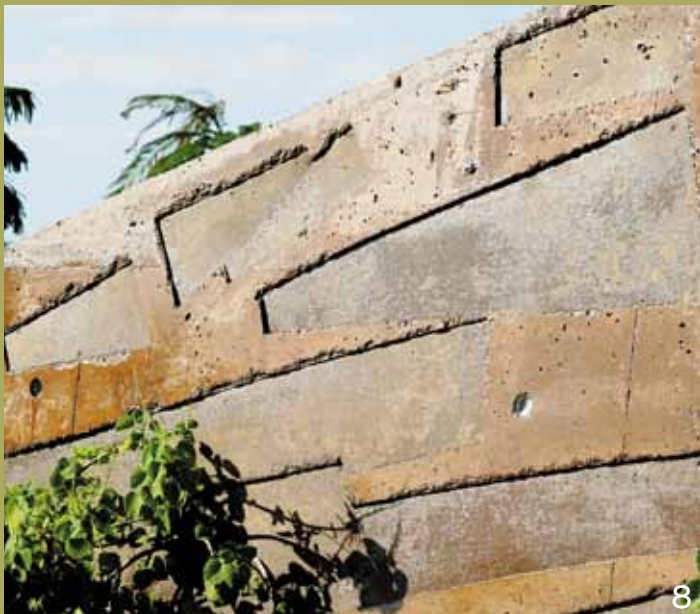
5 A lightly exposed concrete finish (coloured with CCS Parchment) is a functional and attractive look for these steps at Ephraim Island Resort, Qld. Architect: Edaw Australia.



6 A rustic, natural finish complete with authentic timber texture was created using concrete. Oregon timber was used as the formwork. CCS Panther pigment was used to colour the concrete. Architect: Brian Steenbyk.



7 This feature wall has been coloured with CCS Biscuit and sandblasted for a textured effect. Architect: Edaw Australia.



8 Once again, specially cut timber was used in the formwork to create this distinctive pattern. CCS Morocco and CCS Bunyip (special blend) were used to colour the concrete. Architect: Landplan.



9 Integrally coloured garden walls were created on site coloured with CCS Pewter. The concrete surface was subsequently treated to expose the predominant aggregate.

Colourful commuting – a tonic for the weary

Highlight and delineate roadways and parking areas

Using coloured concrete on roadways and parking areas is an excellent method for alerting motorists to changing road conditions.

By incorporating colours and patterns into the roadway or driveways, designers can create an attractive area that also assists in road safety awareness.

Speed bumps, road ramps, roundabouts, deceleration zones, bike lanes, bus stops, median strips and pedestrian crossings are all examples of road construction that can be enhanced with coloured concrete.

Natural elements such as granite or stone can be included in the finish to provide added contrast and appeal.



1 Coloured concrete was subsequently honed to produce a smooth and easily trafficable pedestrian area at this busy bus station. CCS Caramel and CCS Light Peach were the colours utilised. Architect: Peddle Thorp and Cottee Parker Architects. Landscape Architect: Tract Consultants.



2 Natural granite cobble inserts were used in combination with dual coloured concrete to create a hard wearing but stylish roundabout entrance to this housing estate. CCS Biscuit and CCS Heritage Red were used to colour the concrete.



3 Roundabouts become feature areas that add character to estates when coloured concrete is used. CCS Biscuit and CCS Mulberry were utilised.



4 CCS Biscuit and CCS Brick Red were used in the footpath area, median strip and roadways to encourage and direct pedestrian and vehicular traffic flow.

5 Adding colour can liven up an otherwise plain concrete bridge. Colours: CCS Driftwood, CCS Nougat and CCS Onyx 21 in conjunction with red and yellow coloured pavers. Landscape Architect: Gamble McKinnon Green.



6 Colour: CCS Black 21.



7 A great example of how several pours of different coloured concrete can be used in the one area. Natural stones and aggregate were exposed to add further colour and traction. Colours: CCS Grape, CCS Panther, CCS Pewter. Architect: Kevin Hayes Architects.



8 CCS Black, Panther, Bluestone and Onyx are four charcoal or black "colours" that are used to create practical concrete areas at a multitude of industrial and commercial developments. Colour: CCS Bluestone.



9 Elevated pedestrian crossings can be both functional and attractive when coloured concrete is used. Colours: CCS Black 21 for the crossing and CCS Pottery for the ramp.



10 The CCS 'black' range includes five main tones – CCS Panther, a deep 'brownish' black, CCS Liquorice, a deep 'bluish' black, CCS Bluestone, a 'blueish' black akin to European cobbles, CCS Black 21, a conventional charcoal black and CCS Onyx 21, a lighter mid charcoal tone.

Create a greater sense of community and place

Streetscaping

With the trend towards increased urbanisation and inner-city living it is important that local authorities create a welcoming and attractive setting around central business and shopping districts.

Median strips and footpaths can be brought to life as a feature alongside carefully selected plants and shrubs.

With its resistance to fading and wear and tear, full depth coloured concrete is the perfect solution for beautifying a local area - whether large or small.



1 & 5 (Photo 5 on next page) Sweeping arcs of contrasting coloured concrete with detailed landscape borders create a natural and colourful environment in inner city areas. CCS Morocco and CCS Tangerine were used to colour the off-white cement based concrete. Selective removal of the top 2mm of surface to expose the decorative aggregates provides further contrast and another 'natural' element.

2 It's always bigger and brighter on the Gold Coast! Large pot plant holders were coloured and embellished with appropriate artistic flourish before strategic placement on the Indy track near Surfers Paradise. CCS Pottery, CCS Kingfisher and CCS Moss Green were used to colour the pots.



3



4



5

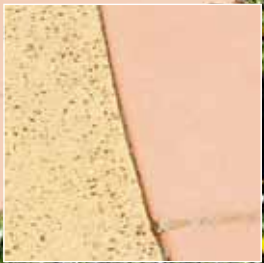
3 Median strips can be used to add life, character and a township feel to busy roads through the introduction of landscape elements and coloured concrete. CCS Daffodil at a 3% dose rate to off-white cement was used to colour the concrete.

4 Bands of multiple colours have been chosen to give this local area a lift. Colours: CCS Corn, CCS Brick Red, CCS Black 21 and sealed with CCS Hardseal sealer.

6 A colourful pavement was used to create a pedestrian friendly entry to this contemporary shop front. CCS Morocco was used to colour the concrete.



6



Friendly environments to encourage customers to linger longer

Shopping and commercial precincts

Underfoot but never unnoticed!

Coloured concrete offers retail and commercial centre managers and owners durability, ease of application and freedom of expression.

And because most shopping centres and commercial precincts usually consist of vast expanses of flooring, coloured concrete is extremely cost effective when compared to other attractive underfoot options.

With endless multiple design capabilities, it is a great flooring medium capable of adding style, atmosphere and mood to a property.

1 A large scale checker board pattern was utilised for this busy entry area. CCS Alpine and CCS Black 21 were used to colour the concrete.



2 Garden beds and permanent seating were designed in conjunction with the coloured concrete floor to create an inviting exterior food court area. CCS Ghost Gum, CCS Onyx 21 and CCS Banana with off white cement, were used in conjunction with an exposed aggregate finish and charcoal coloured tiles. Architect: The Buchan Group.

3 A lightly exposed finish in CCS Biscuit adds warmth to this outdoor cafe.

4 Coloured concrete and carefully placed gardens combine to soften and add class to the surrounds of this shopping centre. Concrete was coloured with CCS Pewter and CCS Onyx 21.



4

5 Four CCS colours were utilised together with sandstone inlays to create an attractive, yet comfortable footpath setting to the main shopping precinct at this regional centre. Concrete coloured with CCS Cardinal, CCS Biscuit, CCS Chocolate and CCS Honeycomb.



5

6 Charcoal coloured concrete was laid and then subsequently saw cut to create an extremely durable and interesting pavement along this inner city tourist facility. CCS Black 21 at a 4% dose rate was specified.

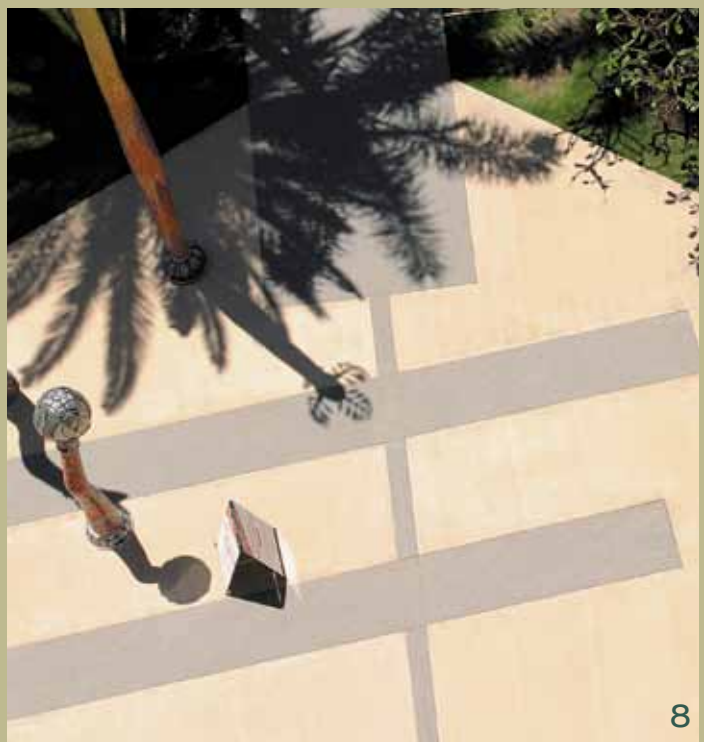


6



7

7 & 8 A variety of colours in a simple broom finish leading onto a stylish main courtyard area helps give this entry area a contemporary look and feel. Colours Used: CCS Grape, CCS Alpine, CCS Driftwood and CCS Black 21.



8

Live, relax and reflect amongst colourful surroundings

Resorts and apartments

Coloured concrete adds flair, value and practicality to entrances, common areas and pedestrian access points within resorts and apartment complexes. Large common areas become much more appealing settings with the addition of colour and landscape features.



1 A combination of coloured exposed concrete and coloured concrete in a broom finish complements this townhouse development. Colour: CCS Biscuit.



2 A combination of light coloured pigments with varying surface finishes creates an interesting, practical but slightly understated affect to this pool surround. CCS Parchment in off-white cement was used to colour the concrete.



3 The clever use of CCS Grape, CCS Panther and CCS Pewter jazzes up the entrance to this inner city apartment building.

Call CCS for comprehensive advice and service on concrete colouring issues

Comprehensive architectural support literature to aid in colour selection and story board compilation.

To assist you in making a quick and reliable colour choice we provide accurate colour cards, colour swatches, design folders, compact discs, ideas brochures and coloured concrete sample discs. All of these tools are developed to assist specifiers in choosing the most suitable colour and to give you the means to communicate it to your client.



Call our infield technical specialists for practical advice or an office consultation.

We employ experienced technical specialists in all states who are devoted to selling colours for pre-mixed and pre-cast concrete.

Due to their work background and colour specialisation, they have a wealth of knowledge in the practicalities (and technicalities) of laying, using, sealing and specifying coloured concrete.

They love sharing their knowledge and experiences with specifiers so please give us a call to arrange a brisk or comprehensive consultation at your office.



On-line specifications, technical details and projects.

Please visit our website for instant access to information on all aspects and systems for colouring concrete. Suggested specifications, project reviews, technical bulletins and a wealth of background information on full depth colour and five other decorative concrete systems are all accessible on the one website.



Call our 1800 help line to coordinate samples and advice.

Call 1800 077 744 to speak to our internal sales co-ordinators to fulfill your support material requests. They will organise literature, samples or technical specialists to answer your queries.



Let us develop your special colour in super fast time.



Be it matching the sandstone or aggregate colour in an escarpment or the colour fleck of the wool in a carpet, CCS has the expertise to provide you with all available options. We regard it as part of our specifier service that unique colours can be formulated in an accurate and time effective manner.

Since the early 1990s our laboratory has been constantly creating new colours and has built a comprehensive computer colour data base and hard scape library.

Some colours are simply impossible to duplicate in the grey base of concrete however in those circumstances we will advise you of the limitations in a prompt manner.

Wherever feasible we will provide you with a colour match within a few days, or if it is already in our library, we may be able to provide it within the space of an hour.

Please call us with details of a colour swatch or sample and our technical sales people will facilitate it for you.

Regularly updated colour range for all climates, locations and trends.



Australia's architecture varies considerably around the nation reflecting the local cultural, climatic and architectural styles and colour trends of the period or place.

In order to satisfy these demands and to remain current, the CCS colour palette is updated and revised on an almost annual basis.

Even though a colour card may be superseded, Concrete Colour Systems retains the formulation at our laboratory so all colours can be made available in the future.

As a result, specifiers have a wonderful array of colours to choose from that will suit the unique circumstances of the project regardless of where it may be located.

Specify 100% powder pigment for undiluted colour performance.

As typified by its name, CCS Pigment Concentrates are supplied in a powder form to the concrete plant to ensure maximum concrete colour is achieved.

Unlike liquid pigments, which typically consist of 50% water and preserving additives, CCS powder pigments deliver pure, undiluted colour for long lasting rich concrete colour.

Consisting entirely of iron oxide and titanium dioxide, CCS pigment concentrates are manufactured to provide your clients with strong concrete colours for now and many years to come.



Systemised packaging to ensure your specification is met.

The colour swatches depicted in the CCS colour card are based on adding the CCS pigments to concrete at a special dose rate. This quantity of pigment varies by colour and also needs to increase as the strength of concrete increases.

In order to ensure that the concrete colour matches the swatches, we work closely with the concrete companies to custom package the target weight of pigment in line with the varying concrete recipes.

This customisation of packaging is another feature of the CCS system and helps ensure that specifications result in satisfied clients.



Nationwide warehousing to ensure fast delivery to concrete plants for on time project completions.

CCS maintains stocks of pigments in all capital cities around Australia as well as eight major regional centres. This ensures your clients achieve next day access to pigments so projects progress quickly, seamlessly and economically.

Time is money and your clients will appreciate your foresight in specifying a product that is quickly and easily accessible.

Specify sealers and pigments from the one source to ensure compatibility.

In addition to producing the market leading range of pigments, Concrete Colour Systems also supply a comprehensive range of high performing sealers and resurfacing compounds.

The sealer range is marketed under the CCS and ACS brands and includes acrylics, epoxies, urethanes and penetrating sealers formulated for application to both internal and external areas.

Specifying both ranges of products from the one source makes it easier for your clients to acquire the products and also ensures compatibility between the colour and the sealer.



Both Concrete Colour Systems and Applied Concrete Solutions products are formulated for application to decorative concrete finishes.

Rich colours available all over Australia.

One of the great advantages in specifying CCS pigments is that your client can enjoy rich vibrant concrete colours at a competitive price.

The competitive price is achieved as the colours depicted on the CCS colour card are achieved using grey cement. Grey cement is available at all concrete plants around Australia and is approximately half the price of 'white' or 'off-white' cement.



The CCS colour chart details colours that can be made with 'off-white' or ivory cement, however for ease and speed of use, the majority of CCS Colours are based on grey cement.

A summary of the steps involved in creating CCS coloured concrete.



1 CCS Pigment is delivered to the concrete plant



2 Preformulated bags of pigment are added to the concrete truck (one bag per m³ of concrete).



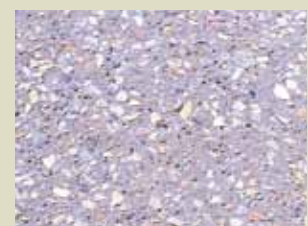
3 After sufficient mixing, coloured concrete is discharged from the concrete truck.



4 Coloured concrete is screeded and floated.



5 Where the "exposed aggregate" finish is desired, the surface layer is removed with water pressure.



6 A close up of the 'coloured exposed aggregate' surface.

Designing with coloured concrete

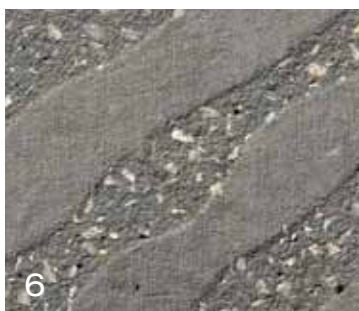
A guide to some of the finishes that can be used to add character to coloured concrete.



Broom finish



Sponge finish



Sand blast



Medium exposed



For a more controlled exposed finish, we recommend the use of CCS Reveal to the surface.



Machine trowel finish



Coving Trowel finish



Sand textures

With this method, the very top few millimetres of the coloured concrete is removed (through sandblasting or the use of acid) to create a coloured, sand type finish.

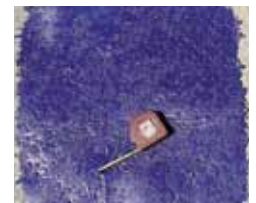


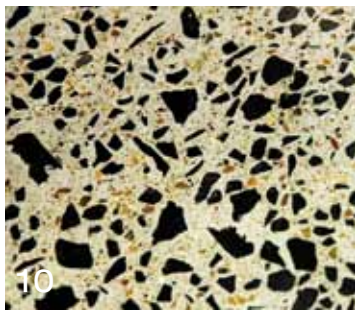
Lightly exposed

Feature the stone as well as the base colour by lightly exposing the stone within concrete.



Rock salt finish





Honed polished finish

Within a few days of concrete placement, the surface is polished to provide a smooth finish where aggregate and colour share equal billing.



Textured imprint mats

Textured mats make it easier to provide an interesting, consistent pattern.



Groove tooled joints



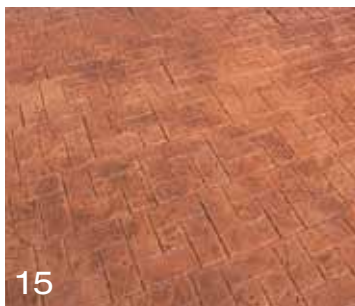
Artistic creations

Objects can be placed in concrete to leave permanent imprints.



Saw cuts

Concrete slabs can be saw-cut to create the look of large pavers.



Pattern stamped

With the use of CCS stamping mats, coloured concrete can be textured in a variety of patterns.



Paved or tiled look

A paved or tiled look is achieved with CCS stencils onto full depth coloured concrete or through the use of surface colour sprayed onto the surface once the concrete has been cured.



Sealing

Surfaces should be sealed to protect them against the ingress of dirt and other contaminants.

Things that impact on colour and the final look



Coloured and coloured exposed

The use of different coloured aggregates in the same coloured concrete can greatly affect the final colour.



Sealed and unsealed

Sealing concrete with one of the gloss CCS acrylic, epoxy or urethane sealers will give concrete that wet look.



Natural seal

This picture demonstrates how CCS Natural Seal will protect your concrete surface and repel water.






Grey and 'off-white' concrete

Cement colour has a significant impact on concrete colour.

Both pavers in this photo were coloured with the same pigment. The colour difference is due to the different cement colour.

Rich pigment blends for full depth colouring of pre-mix and pre-cast concrete

				
CCS Raffia Beige	CCS Lemon Grass	CCS Desert Buff	CCS Putty	CCS Savannah
				
CCS Corn	CCS Rattan	CCS Golden Bronze	CCS Morocco	CCS Sundance
				
CCS Gypsy	CCS Outback	CCS Brick Red	CCS Ruby	CCS Firecracker
				
CCS Cameo	CCS Paperbark	CCS Driftwood	CCS Spinifex	CCS Boomerang
				
CCS Kalahari	CCS Biscuit	CCS Saddle	CCS Caramel	CCS Cherokee
				
CCS Sandplain	CCS Canyon	CCS Mudpack	CCS Chocolate	CCS Kelp
				
CCS Limestone	CCS Eucalyptus	CCS Iguana	CCS Amazon	CCS Cactus
				
CCS Canvas	CCS Yorkstone	CCS Honeycomb	CCS Desert Sand	CCS Cairo
				
CCS Apollo	CCS Pewter	CCS Mulberry	CCS Kakadu	CCS Moss Green
				
CCS Grasshopper	CCS Lychee	CCS Lizard Skin	CCS Water Buffalo	CCS Elephant
				
CCS Ghost Gum	CCS Smokey Blue	CCS Gothic Charm		
				
CCS Black 21	CCS Onyx 21	CCS Blue Gum		
				
CCS Licorice	CCS Voodoo			

Due to the limitations of the printing process, the colours on this page are not accurate. **Please refer to our 'True to Life Colour Card' for accurate colour representation.** Likewise variations in local aggregates, cements and laying techniques will impact on colour.

CONCRETE COLOUR SYSTEMS

A division of River Sands Pty Ltd

FACTORY 683 Beenleigh Redland Bay Road,
Carbrook, Brisbane 4130, Australia

SALES AND TECHNICAL ENQUIRIES

Melbourne Phone 03 9311 9225 Fax 03 9311 9445
Sydney Phone 02 9756 1711 Fax 02 9677 1352
Brisbane Phone 07 3287 6444 Fax 07 3287 6445
Perth Phone 0423 023 164
Adelaide Phone 1800 077 744

Toll Free Australia Telephone 1800 077 744

Email ccscolour@riversands.com.au

www.concretocoloursystems.com.au

brilliant colours
outstanding *results*

