

SUPASLAT

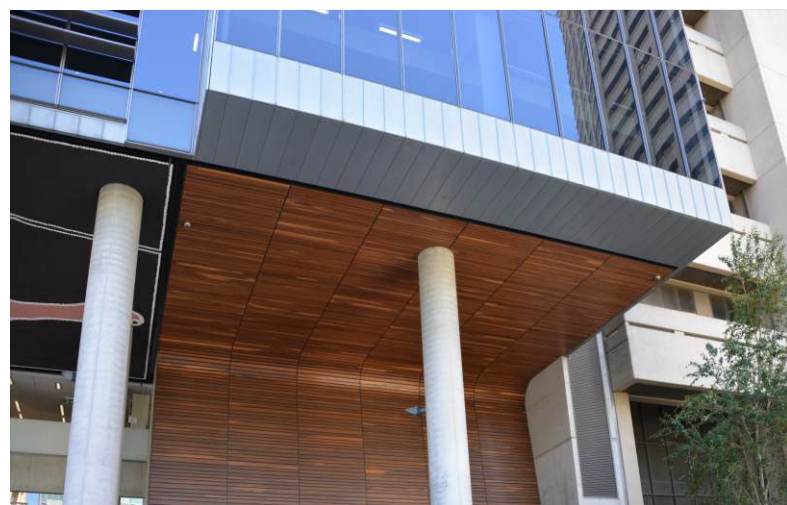
Design Flexible
Modular Slat System

Modular Construction • Customisable • BCA Fire Groups 1 & 2 Available



Design Flexible Modular Slat System

- ✓ Modular construction minimises on-site installation time.
- ✓ The unique breadth and depth of the Supaslat range allows us to formulate solutions to match the project's budget and the design intent.
- ✓ BCA Fire Group 1 options unique to Supaslat from Supawood.
- ✓ Acoustic test results and calculations available for all options.
- ✓ Access hatches pre-assembled with concealed fixing ready for quick on-site installation.
- ✓ Slatted panels can be curved to nearly any radius.
- ✓ Simple concealed fixing supplied for quick and easy installation.
- ✓ Service zones available for lights or other services.
- ✓ Sustainability options including E0, PEFC, FSC®, WELL and LEED.

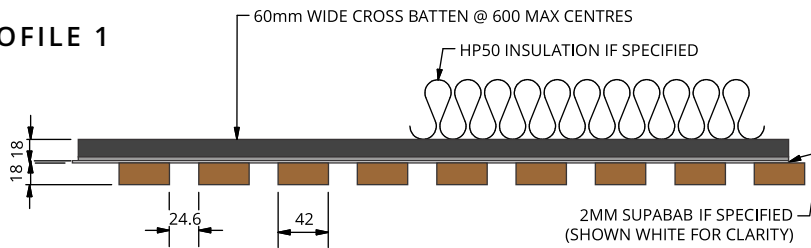


If you can **imagine** it, it's possible with SUPASLAT

The Standard Range Profiles

Available in 5 profiles and a wide range of standard finishes.

PROFILE 1

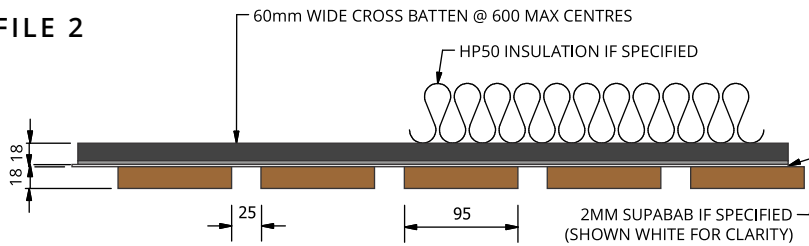


Open area 37% Typical weight 11kg/m²

FINISH OPTIONS

SUPA VENEER
SUPA TEXTURE
SUPA FINISH

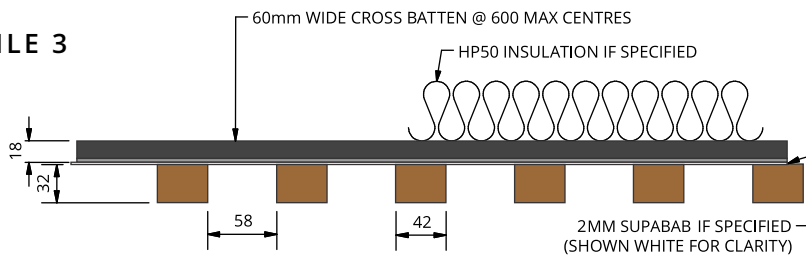
PROFILE 2



Open area 20.8% Typical weight 13kg/m²

SUPA VENEER
SUPA TEXTURE
SUPA FINISH
DRIFTWOOD

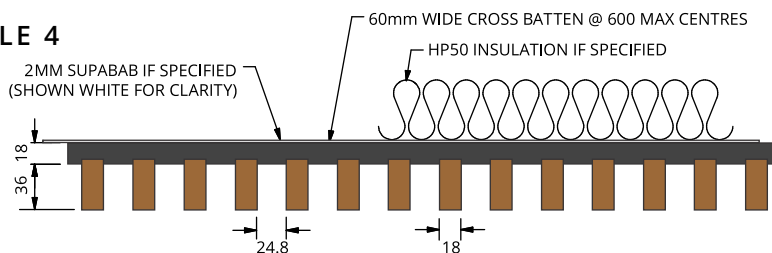
PROFILE 3



Open area 58% Typical weight 12kg/m² If using FR MDF, slats will be 25mm thick

SUPA VENEER
SUPA TEXTURE
SUPA FINISH

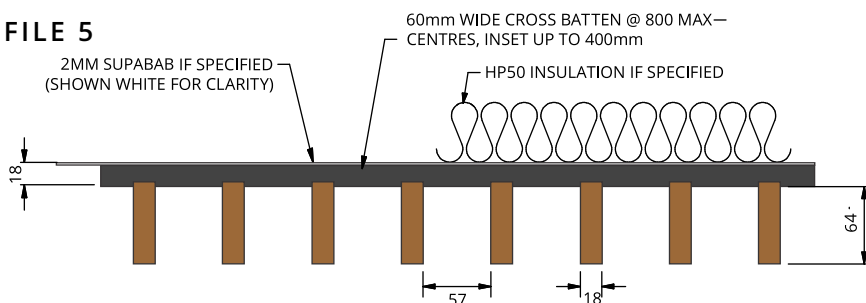
PROFILE 4



Open area 57% Typical weight 15kg/m²

SUPA TEXTURE
SUPA FINISH

PROFILE 5



Open area 76% Typical weight 15kg/m²

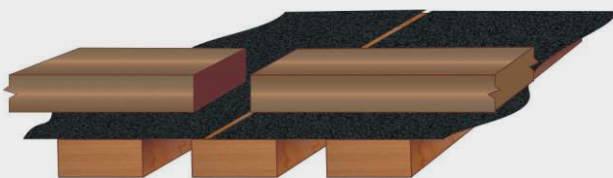
SUPA VENEER
SUPA TEXTURE
SUPA FINISH
DRIFTWOOD

We can also do custom slat configurations and rapidly design for your individual specification.

Panels are factory produced to precise lengths specified by the contractor. Panel widths can be varied by adding or deducting slats. Note that the sizes above are nominal and will vary depending on finish type selected.



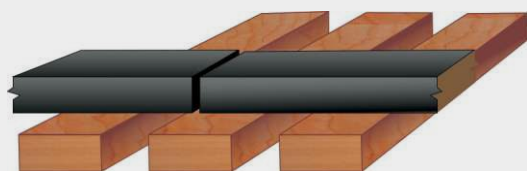
Three Standard Backing Options



Black SUPABAB Backing: Integrated rigid acoustic backing with excellent acoustic properties.



Black solid backing board: Ideal for non-acoustic wall applications as no visible cross battens. Also used for handling services for ceiling panels.



Open, Black battens with gaps between: Most economical to supply. Suits return air and smoke exhaust concealment. HP50 Bulk installation can be installed above for acoustics.

If you can **imagine** it, it's possible with SUPASLAT

Finishes and colours

SUPA VENEER

(NTV) Natural Timber Veneer

Fire Group 2 panel options available.



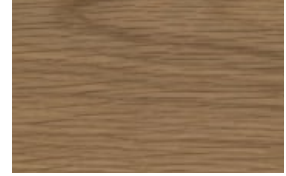
Hoop Pine CC



Tasmanian Oak 1/4



Blackbutt 1/4



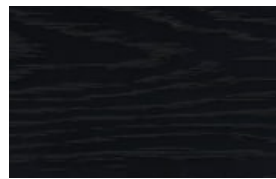
American Oak CC



Spotted Gum 1/4



American Walnut CC



Midnight Black



or
any other
species

Your choice

SUPA TEXTURE

(ST) Tactile Woodgrains & Finishes



Limewash



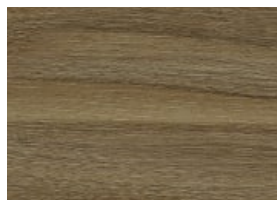
Vic Ash

Tactile and highly durable this film is available across the full range of panels, slats, beams and blades and available in fire retardant configurations.

We're so confident in Supatexture we're offering a unique 30-year no hassle warranty.



Blackbutt



Spotted Gum



Tasmanian Oak



SUPAFINISH

(SF) Veneer & Coloured Laminates

Fire Group 1 and 2 options available.



Hoop Pine Limed SF



Hoop Pine Classic SF



Euro Beech SF



Fusion Maple SF



Black SF



Tasmanian Oak SF



Blackbutt SF



Spotted Gum SF



Virgin Walnut SF



White SF

DRIFTWOOD

The Rustic Timber Lining

Etching natural solid timber creates this unique, weathered effect.

[Read more about it here >](#)



Driftwood Whitewashed



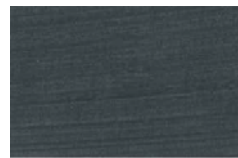
Driftwood White



Driftwood Black



Driftwood Clear Vic Ash



Driftwood Blackwashed



Example of colour variation in Driftwood Whitewashed

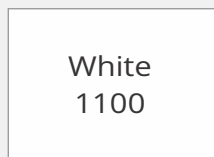
SUPACOLOUR

(SCR) Painted Finishes

Highly durable satin, high gloss and metallic finishes matched to any colour. Fire Group 1 and 2 available.

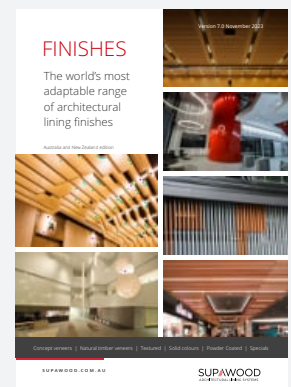
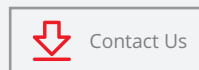


MATCH TO ANY COLOUR REFERENCE



More Colours!

Can't find quite the right shade here > Get in touch with the team to discuss what custom finishes are possible and to request samples.



Colours shown in these swatches are a guide only and actual will vary from panel to panel. Driftwood finish in particular are natural products and there will be variations between slats.

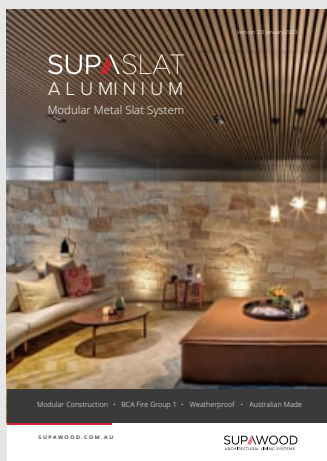
Endless Applications

- › Commercial & Workspaces
- › Lobbies & Receptions
- › Retail & Hospitality
- › Theatres & Education
- › or anywhere a dynamic directional effect is desired



SUPASLAT ALUMINIUM Modular Metal Slat System

Extruded aluminium slat system which is highly durable, suitable for interior and exterior applications, BCA Fire Group 1, completely moisture resistant and available in acoustic options.

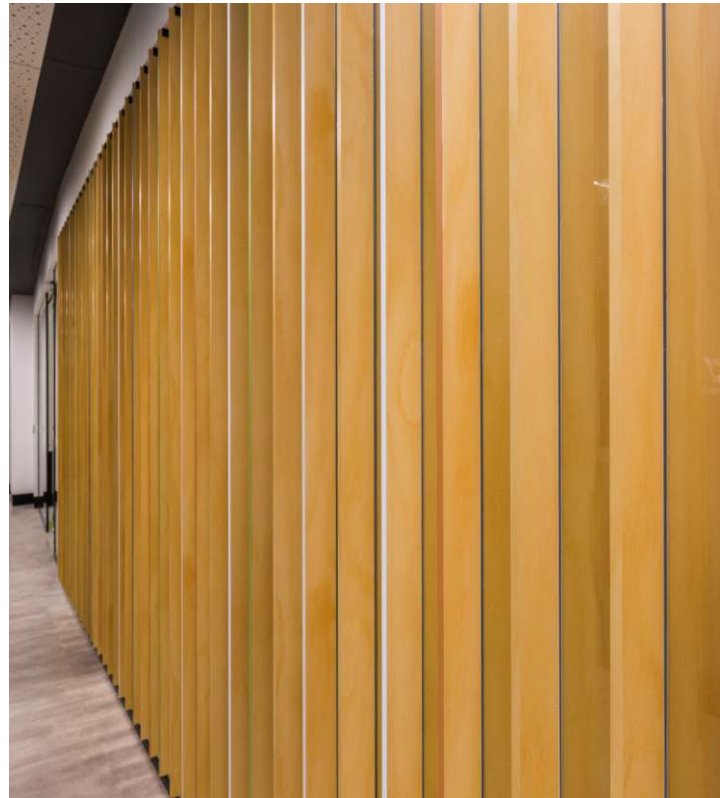


Download Brochure











It's not easy to make your project stand out and satisfy performance, compliance and budget needs. We customise our systems to your requirements.



Click here to Download our SUPASLAT Design & Detailing Manual

SUPAWOOD
ARCHITECTURAL LINING SYSTEMS

SUPAWOOD HEAD OFFICE

Australasian Support & Manufacturing
Aus: +61 1800 002 123
NZ: +64 (0) 9887 3234
info@supawood.com.au

SUPAWOOD UK

UK & EU Support & Manufacturing
+44 (0) 3307 00 00 30
sales@supawood.com.uk

SUPAWOOD.COM.AU

As **adaptable** as your *imagination* ...