



*Supporting you with Smart Solutions*

# FOAMULAR®

Energy-Saving, Moisture-Resistant XPS Insulation

## POLYBOARD ENVIRO 300

ZERO ODP EXTRUDED POLYSTYRENE INSULATION



### Foamular Extruded Polystyrene is a closed cell, high performance insulation.

Foamular Extruded Polystyrene is ideal for many areas of commercial, residential and civil construction. Foamular is CFC free, has high strength, high R-values and is virtually 100% moisture resistant.

### Polyboard Enviro 300 is a Zero ODP, Green Star Compliant extruded polystyrene.

Manufactured with a CO<sub>2</sub> blowing agent, it releases no chemicals with Ozone Depletion Potential (ODP) and has minimal global warming potential. Polyboard Enviro can be used anywhere traditional extruded polystyrene is used and is a must for all green buildings.



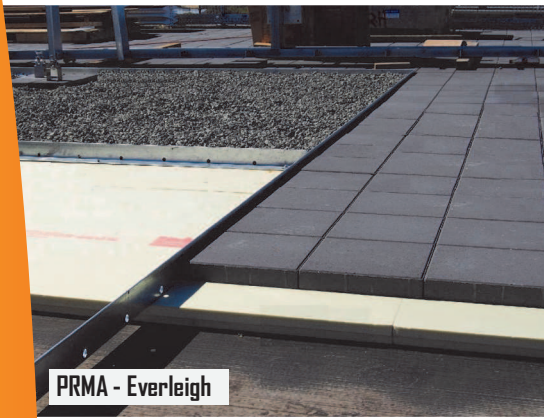
#### Consider the Benefits:

- ◆ High R-Value = Increased Energy Efficiency
- ◆ High Strength = 50 Year Product Lifecycle
- ◆ Green Product = Lowers Greenhouse Gas Emissions
- ◆ Low Water Absorption = Increased Thermal Performance
- ◆ Guaranteed Long Term Thermal Performance = 20 Year Warranty\*

Foamular Extruded Polystyrene is manufactured by Owens Corning Asia Pacific. Owens Corning has been producing insulation since 1938 and is a member of EPA Climate leaders program.

Austech External Building Products is an Australian distributor of quality building products, including a range of extruded polystyrene insulation. Austech has been providing the Australian construction industry with quality products for over 30 years and has offices Australia wide.

[www.austech.com.au](http://www.austech.com.au)



PRMA - Everleigh

## PRMA Protected Roof Membrane Assembly

Foamular is placed over the waterproof membrane, protecting the membrane and creating a **continuous thermal barrier** on the roof.

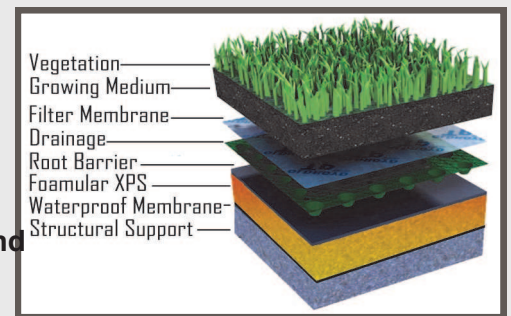
The insulation is held in place by a specified ballast, usually pebbles or concrete pavers.

**“Insulation Is An Investment”**

## Green Roof Garden Insulation

Properly insulating a green roof garden with moisture resistant insulation is essential for eco construction.

The closed cell structure of XPS, plus its high compressive strength **guarantee physical and thermal integrity**, even under wet growing mediums.



**“Green Roof Gardens Are Carbon Sequestrators, Meaning They Actually Absorb Carbon!”**



## Underslab Insulation

**Commercial**— Fixing Foamular directly to slabs is a quick and efficient method to **meet part J requirements**.

**Residential**—when placed under on-ground slabs prior to pour, XPS ensures maximum efficiency for in-slab heating systems.

**“Good Insulation Pays For Itself In Energy Savings”**

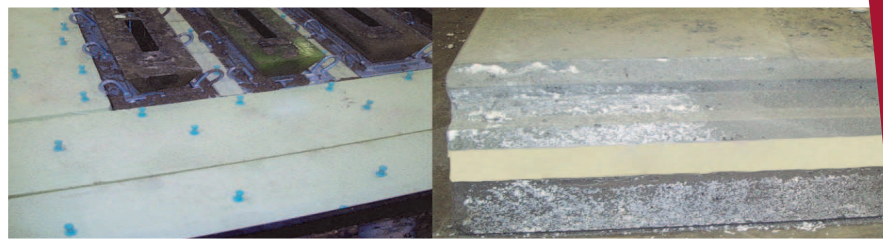
## Masonry/Brick Cavity Wall Insulation

Dramatically improve thermal performance of cavity walls by placing Foamular XPS insulation against the internal leaf.

Moisture resistant Foamular insulation acts as a moisture barrier plus it is **simple and quick to install**.







## Insulated Concrete Sandwich Panel Wall System

A fast and effective method of construction using Foamular's high thermal and physical performance.

Combined with low conductivity wall ties, the sandwich panel walls combine strength, **quick build time** and **outstanding energy efficiency**. Ideal for BCA part J construction.

**“Lower Energy Demand  
=  
Lower Greenhouse Gas Emissions”**



EIFS - Grasslands Terrigal

## EIFS - Exterior Insulation & Finishing Systems Lightweight Construction

EIFS with Foamular is **30% more energy efficient** than between stud insulation.

When used with fibreglass reinforced acrylic/polymer renders, the result is a seam free, high impact wall with high thermal performance.



Cold Storage - Rand Cold Storage Facility, Homebush

## Cold Storage Floor Insulation.

The **high compressive strength** of XPS, coupled with high thermal performance and moisture resistance make it ideal for cold storage insulation.

By providing superior support for the slab, compressive creep and deflection are minimised over the life of the building.

# Benefits Of XPS

## Long term Thermal Performance

\*Foamular is guaranteed to maintain a minimum 90% of its thermal properties for 20 years! This creates greater long-term energy savings and a quicker payback period.

## Quality Insulation Is An Investment

Outlay for insulation is quickly recouped from energy savings. Foamular's higher R-values saves more energy now and in the future.

## High R-value Insulation

Extruded polystyrene has superior R-value in comparison to EPS and most other insulating products.

## High Strength Insulation

Extruded polystyrene comes in many different strengths, some that can even be driven on! If your project needs to last, it has to be XPS.

## Minimal Water Absorption

Extruded Polystyrene is a closed cell insulation, so unlike other foam products, it is not affected by moisture, guaranteeing long term physical and thermal properties.

### Austech NSW

80 Tattersall Road,  
Blacktown NSW 2148  
Phone: 02 9831 1623  
Fax: 02 9831 5043  
sales@austech.com.au

### Austech QLD

1/1089 Kingsford Smith Drive,  
Eagle Farm QLD 4009  
Phone: 07 3268 3066  
Fax: 07 3268 3021  
sales@austech-qld.com.au

### Austech VIC

36 Isabella Street,  
Moorabbin VIC 3189  
Phone: 03 9532 0131  
Fax: 03 9532 1868  
sales-vic@austech.com.au

### Austech WA

20 Hilltop Cl,  
Mahogany Creek, WA, 6072  
Phone: 08 9295 0500  
Fax: 08 9295 6699  
Sales-wa@austech.com.au

### Austech TAS

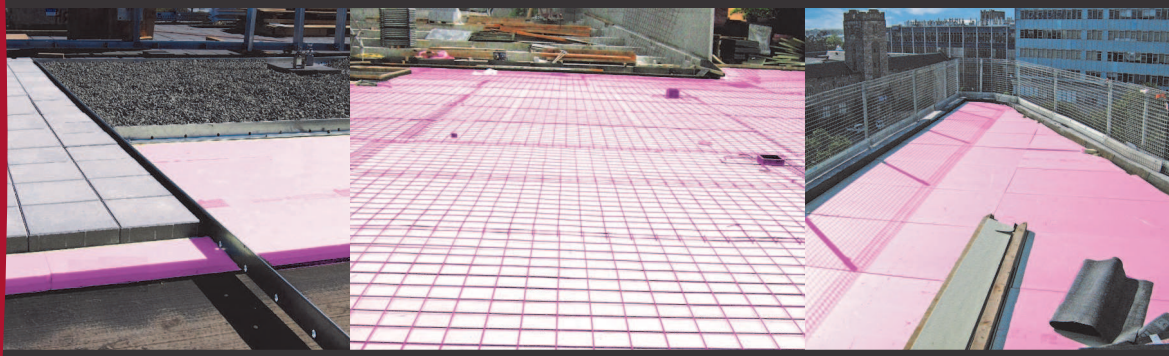
4/8 Melrose Court,  
Sandy Bay, Hobart TAS 7005  
Phone / Fax : 03 6225 4003  
sales-tas@austech.com.au

### Technical Advice

Mike Nagle  
0417 268 660  
mnagle@austech.com.au

# POLYBOARD ENVIRO 300

ZERO ODP EXTRUDED POLYSTYRENE INSULATION



Polyboard Enviro 300 is an Extruded Polystyrene Board with Zero Ozone Depletion Potential (ODP). It can be used anywhere where normal extruded polystyrene is used, giving superior thermal properties, high compressive strength and minimal water absorption.

Polyboard Enviro 300 is produced with a CO2 blowing agent with Zero ODP and minimal Global Warming Potential in accordance to Montreal Protocol 2010.

#### Physical Properties

Property	Unit	Test Standard	Foamular				Polyboard Enviro 300
			FM250	FM300	FM400	FM500	
Density	kg/m <sup>3</sup>	ASTM D1622	31-40	34-40	38-44	40-45	35
Compressive Strength	kpa	ASTM D1621	>=250	>=300	>=400	>=500	>=300
Water Absorption Rate	%(v/v)	ASTM C272	<0.1	<0.1	<0.05	<0.05	<0.2
Water Vapour Permeance	ng/(pa.s. m <sup>2</sup> ) @ 25.4mm	ASTM E96	<63	<35	<35	<35	-
Thermal Conductivity (R Value)	W/m.k @ 24°C	ASTM C518	25mm-R.89 • 30mm-R1.07 • 40mm-R1.42 • 50mm-R1.78 - W/Foil - R2.00 • 60mm-R2.14 • 75mm-R2.67 • 100mm-R3.57				50mm-R1.56 75mm-R2.34
Fire Rated Indices		AS1530.3	Ignitability 9 (0-20) Spread of flame 0 (0-10) Heat evolved 1 (0-10) Smoke developed 4 (0-10)				B2
As Tested With 6mm Poly Render			Ignitability 0 (0-20) Spread of flame 0 (0-10) Heat evolved 0 (0-10) Smoke developed 1 (0-10)				-
As Tested With Foil Facing			BCA Group Classification 1 (Specs C 1.10 & A2.4)				-
Board Dimensions (mm)			2450 x 600 (2450 x 1200 optional special order)				2450 x 600
Reference Document - Australian Standard AS1366.4 Rigid Cellular plastic sheets for thermal insulation. Part 4 Rigid Cellular Polystyrene Extruded RC/PS-E							
Foamular and Polyboard Enviro 300 Extruded Polystyrene are manufactured to the following:							
Environmental Management systems certified to ISO 14001/2004							
Quality management systems in compliance to ISO 9001/2008.							