

Look Both
Ways
Collection



Interface®

Look Both Ways™ Collection

Monolithic textures denoting gravity and substance live with light-hearted colour and confetti. Unexpected combinations of materials inspire creative outcomes. Celebrate the mix!

Look Both Ways is a collection of carpet tile and LVT patterns combining Zen-like purity with playfulness. Marrying purpose and function with your intention, these styles create landscapes that perform and delight in infinite ways.

Step it Up™, the foundation of the carpet tile collection, includes the best urban greys plus six streetwear-inspired colours. The other patterns share the same neutral palette, but each has distinctly different textures: Step in Time™ carries the nuance of a crushed velvet; the curves of Step this Way™ are the softer twin to Walk About™ LVT; and Step Aside™ steals the show with a spray of accent colours tossed across the plush finish, elevating the entire collection to an elegant celebration of floors. Step, walk or run, but definitely Look Both Ways for design inspiration.

Carbon Neutral Floors™ Like all of our products, globally, Look Both Ways is carbon neutral. Join us in creating a climate fit for life. **#ClimateTakeBack**

(COVER) CARPET TILE STEP ASIDE COLOUR JET INSTALLED ASHLAR
LVT WALK OF LIFE™ COLOUR CARBON INSTALLED MONOLITHIC

CARPET TILE STEP-THIS WAY COLOUR ALBA
CARPET TILE STEP IT UP COLOUR AZURE INSTALLED ASHLAR





CARPET TILE STEP IT UP COLOUR SLATE INSTALLED BRICK
LVT WALK ON BY™ COLOUR MONOCHROME INSTALLED MONOLITHIC

www.interface.com

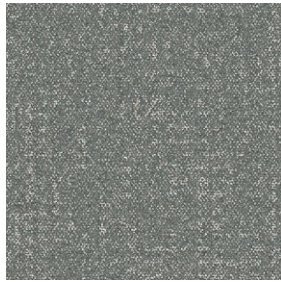


CARPET TILE STEP IT UP COLOUR SIENNA INSTALLED BRICK
CARPET TILE STEP IN TIME COLOUR EBONY INSTALLED MONOLITHIC

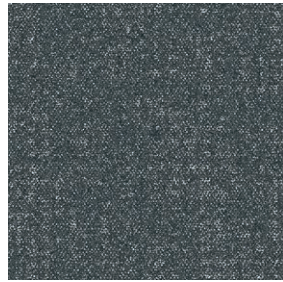
Step it Up™ Colourline



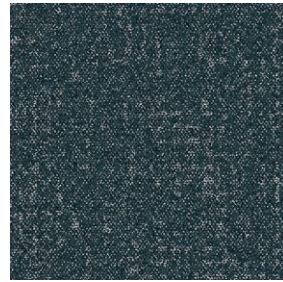
9406-001-000 ALBA



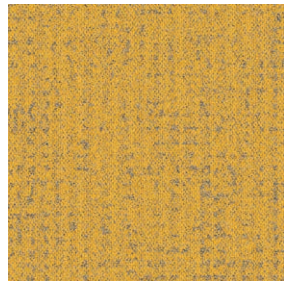
9406-003-000 ASH



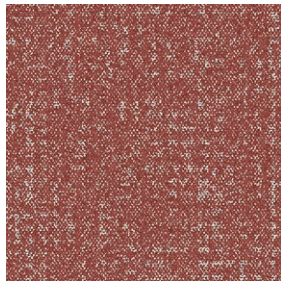
9406-007-000 COAL



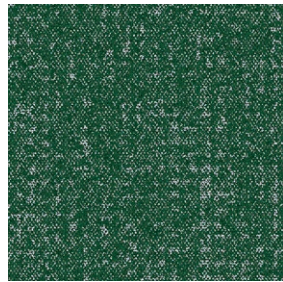
9406-008-000 SLATE



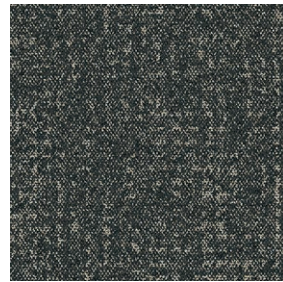
9406-004-000 CITRINE



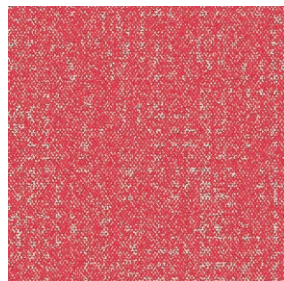
9406-006-000 SIENNA



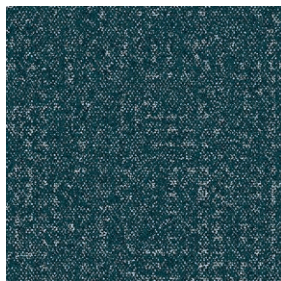
9406-012-000 JADE



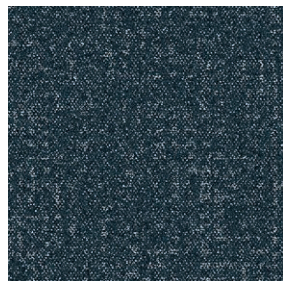
9406-005-000 EBONY



9406-002-000 CORALITE



9406-010-000 AZURE



9406-009-000 INDIGO



9406-011-000 JET



CARPET TILE STEP IT UP COLOUR CORALITE INSTALLED BRICK
LVT WALK OF LIFE COLOUR COOL ASH INSTALLED MONOLITHIC

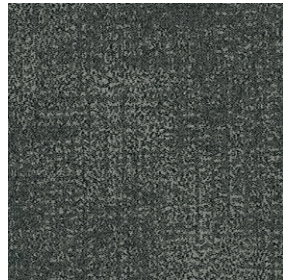
Step in Time™ Colourline



9403-001-000 ALBA



9403-002-000 ASH



9403-003-000 EBONY



9403-004-000 COAL



9403-005-000 INDIGO



9403-006-000 JET





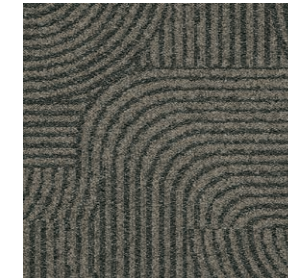
Step this Way™ Colourline



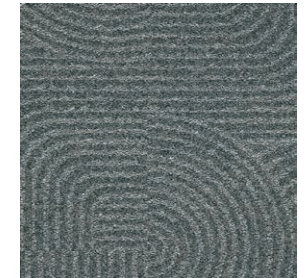
9405-001-000 ALBA



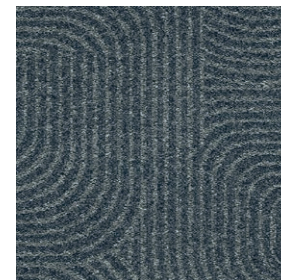
9405-002-000 ASH



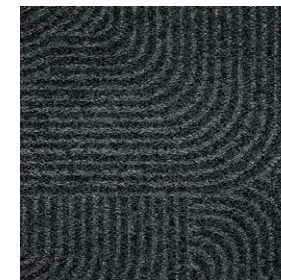
9405-003-000 EBONY



9405-004-000 COAL



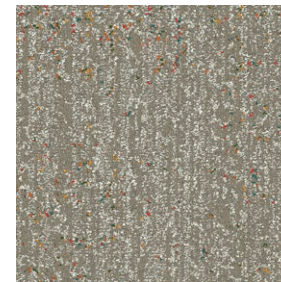
9405-005-000 INDIGO



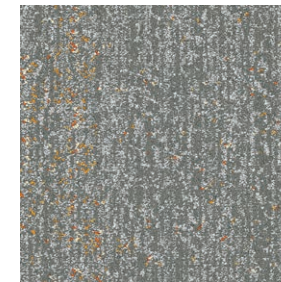
9405-006-000 JET



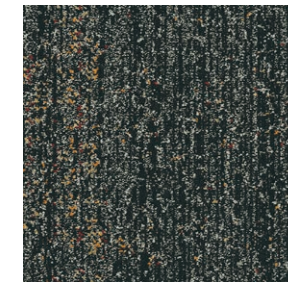
Step Aside™ Colourline



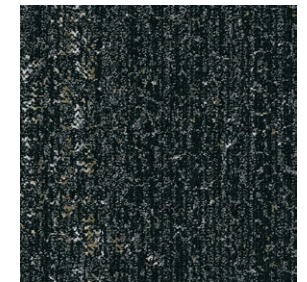
9404-001-000 ALBA



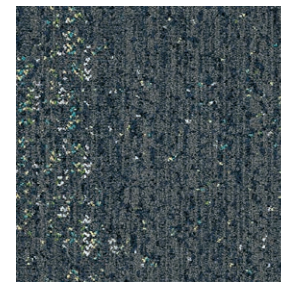
9404-002-000 ASH



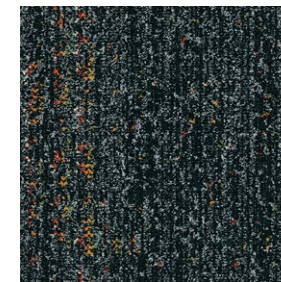
9404-003-000 EBONY



9404-004-000 COAL



9404-005-000 INDIGO



9404-006-000 JET

LVT & Carpet. A power duo.

Look Both Ways combines hard and soft flooring with intentional design, which makes choosing the right materials for your space even easier. Seamlessly move from carpet tile in a private work area to LVT in a busy corridor, without changing patterns or using transition strips. Brighten a small, but heavily trafficked space with a lighter shade of LVT and create nested areas with inset area rugs. Every mix is a match with no sacrifice of performance or aesthetics.



LVT & Carpet. A power duo.



LVT WALK ON BY COLOUR MONOCHROME
CARPET TILE STEP IN TIME COLOUR JET INSTALLED MONOLITHIC

www.interface.com

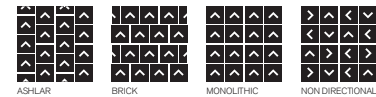


LVT WALK OF LIFE COLOUR PUMICE INSTALLED MONOLITHIC
CARPET TILE STEP ASIDE COLOUR ALBA INSTALLED ASHLAR

Specifications

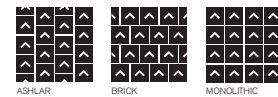
Step in Time

Style Code	9403 Pattern 000
Product Definition	Tufted Textured Tip Sheared Loop
Yarn/Fiber	100% Solution Dyed Nylon
Machine Gauge	Tapestry
Pile Thickness	2.1mm +/- 0.5mm
Total Thickness	6.5mm +/- 0.5mm
Tile Size	50x50cm
Area of Use	Commercial - Heavy Use
Lifetime Antimicrobial	Intersept
Soil/Stain Protection	Protekt
Installation Methods	Ashlar, Brick, Monolithic, Non Directional



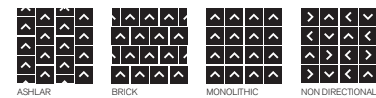
Step Aside

Style Code	9404 Pattern 000
Product Definition	Tufted Textured Tip Sheared Loop
Yarn/Fiber	100% Solution Dyed Nylon
Machine Gauge	Tapestry
Pile Thickness	2.4mm +/- 0.5mm
Total Thickness	7.0mm +/- 0.5mm
Tile Size	50x50cm
Area of Use	Commercial - Heavy Use
Lifetime Antimicrobial	Intersept
Soil/Stain Protection	Protekt
Installation Methods	Ashlar, Brick, Monolithic



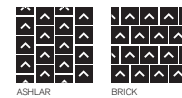
Step this Way

Style Code	9405 Pattern 000
Product Definition	Tufted Textured Tip Sheared Loop
Yarn/Fiber	100% Solution Dyed Nylon
Machine Gauge	Tapestry
Pile Thickness	2.1mm +/- 0.5mm
Total Thickness	6.5mm +/- 0.5mm
Tile Size	50x50cm
Area of Use	Commercial - Heavy Use
Lifetime Antimicrobial	Intersept
Soil/Stain Protection	Protekt
Installation Methods	Ashlar, Brick, Monolithic, Non Directional



Step it Up

Style Code	9406 Pattern 000
Product Definition	Tufted Textured Loop
Yarn/Fiber	100% Solution Dyed Nylon
Machine Gauge	1/12
Pile Thickness	2.1mm +/- 0.5mm
Total Thickness	6.0mm +/- 0.5mm
Tile Size	50x50cm
Area of Use	Commercial - General Use
Lifetime Antimicrobial	Intersept
Soil/Stain Protection	Protekt
Installation Methods	Ashlar, Brick



Carbon Neutral Floors™
All of our products are carbon neutral and our programme is verified by an independent third party, Bureau Veritas.



All Interface manufacturing facilities in the Asia Pacific region maintain registration to ISO 9001 Quality Management Systems and ISO 14001 Environmental Management Systems.

Production specifications are subject to normal manufacturing tolerances and may be changed without notice. Slight variation in colour among different production lots are normal and should be considered in the overall installation plan. Products covered by manufacturer's written warranty only. All other warranties, including without limitation any implied warranties of merchantability or fitness for particular purpose, are hereby disclaimed. Contact your representative for written warranty information.

As part of Interface's Mission Zero promise to eliminate any negative impact on the environment by 2020, we always consider the environment impact of every creative, manufacturing and building decision. This sample book is printed on recycled paper and with soy based ink. Twenty four virgin trees were saved from our use of 1725kg of recycled paper in the production of 5000 sample books. Energy intensity also decreased and greenhouse gases were reduced. The other reductions came from waste water and solid waste. Through our sample reclamation program, we help keep sample materials out of landfill by re-using them until it is time to recycle these sample materials.

www.interface.com

South East Asia

Interface Asia
tel: 65-6478 1510
www.interface.com

South Korea

tel: 82-2-555 1734
www.interface.com

Japan

Interface Japan
tel: 81-3-5733 5211
www.interface.com

India

Interface India
tel: 91 80 46131313
www.interface.com

Beijing Studio

Interface China
tel: 86-10-6590 7810
www.interface.com.cn

Hongkong Studio

Interface China
tel: 852-2802 0838
www.interface.com.cn

Shanghai Studio

Interface China
tel: 86-21-6340 3868
www.interface.com.cn

Australia

Interface Australia
local toll free: 1800 804 361
www.interface.com

07/2019
SF0119T0



Climate change is undeniable. And reversible. Our mission is to prove it. **Join the #ClimateTakeBack and help create a climate fit for life.**