

DESKLIFT DB14

Features:

- Thrust up to 700 N per actuator
- Speed level up to 38mm/s
- Standard installation dimension 508 mm
- Standard stroke length 660mm
- Low noise level
- Synchronous drive of the middle profile
- Separate motor cable (black: 1000mm, 2000mm or 2500mm)
- Dimensions of motor $\varnothing 48$ mm
- 2 x Hall sensor (enables parallel drive with the control box CBD4 /CBD5)

Options:

- Customised installation dimension and stroke length

Usage:

- Single or 2, 3, 4 parallel drive or even multi-parallel with up to 16 columns
- Duty cycle: 10 % ~ 6 min. per hour or 2 min. at continuous use at full load
- Ambient temperature: +10° to +40° C
- Compatible with control boxes CBD4, CBD5 and DESKLINE controls
- Will be approved according to EN 60335-1 and UL 962
- Storage and transport temperature: -10 °C to +70 °C



DESKLINE[®]
IMPROVING ERGONOMICS

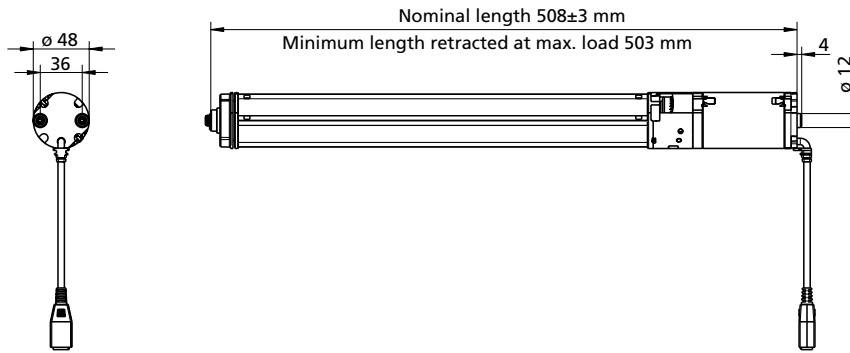
The DB14 DESKLINE Built-in actuator sets new standards for inline actuators. The compact design is developed to fulfill the market requirements for a low built-in dimension and at the same time a long stroke length.

The DB14 built-in actuator is specially designed for integration in a 3-part column, to achieve the optimum freedom of design for desk applications. The DB14 can either run as a single, 2, 3 or 4 parallel system or even multi-parallel with up to 16 actuators.

The parallel drive is constructed to compensate for an uneven load on the desk by means of the control box CBD4 or CBD5. The controlbox is designed with a soft start/stop function.

With this product LINAK fulfils even the strongest standards that demand a range of adjustment from 560 mm up to 1210 mm.

Dimensions:



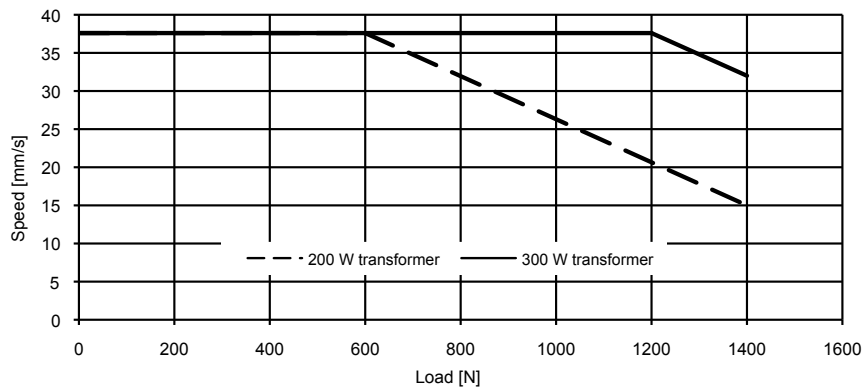
Technical specifications:

Type	Thrust Max. per DB14 [N]	Self-locking per DL14 [N]	Speed unloaded [mm/s]	Duty cycle [%]
DB14 (office desks)	700	700	38	10

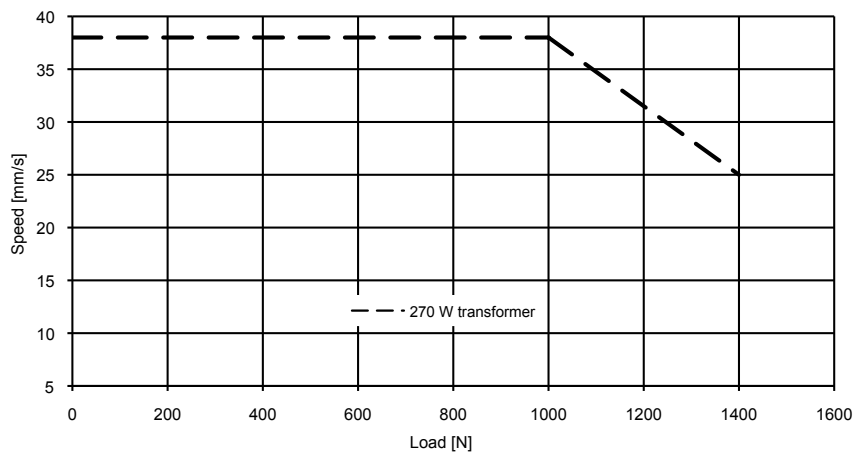
Diagrams:

The load/curve is shown for a DB14 mounted in a profile with max. 250 N friction.

2 x DB14 with CBD4



2 x DB14 with CBD5



The above curve applies to a centrally placed load. With moment load there will be an increased friction in the columns, which will reduce the lifting force correspondingly.



Be aware that the DB14 DESKLINE® system may only be used in push applications.

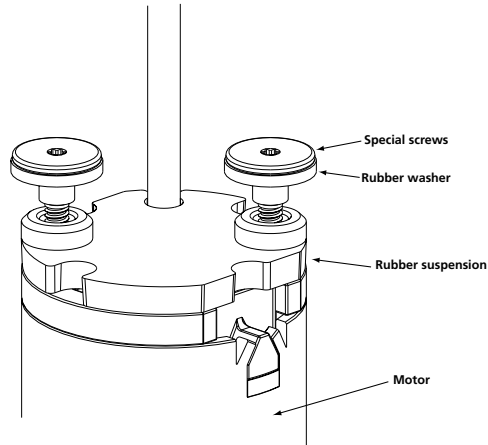
Mounting guidelines for DB14:



For detailed information on how to mount the DB14 please contact LINAK A/S.

The top of the motor is supplied with holes for the self tapping special screws. These screws are together with the 2 rubber washers supplied with the DB14. On the top of the motor there is the special rubber suspension, which always should be used when the DB14 is mounted in a column. The top flange where the motor is mounted on should be 4 mm thick, and the 2 mounting holes should be $\varnothing 12$ mm with a centre distance of 36 mm.

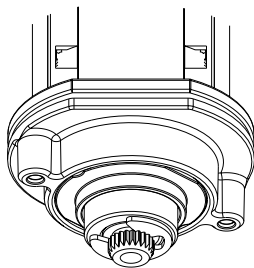
Top:



Middle tube:

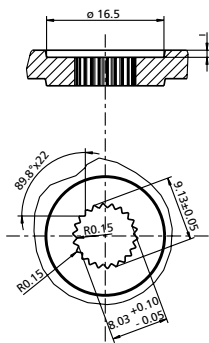
For detailed information on how to mount the middle tube of your column please contact LINAK A/S.

Bottom:

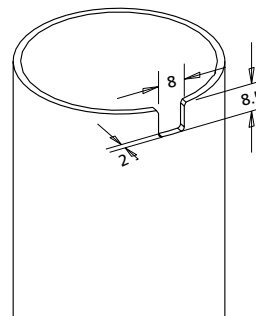


At the bottom of the DB14 the inner spindle should be mounted by means of a 22 teeth spline profile and a M5 screw in the bottom of the spindle.

The bottom plate should have a groove for the locking ring.



Bottom plate with groove and spline.



There should be a cut out in the inner profile for the cable relief.



DB14 gives the possibility of synchronous drive of the middle profile - to make sure that the profiles are in the right place you have to secure that both the hollow and the massive spindle is driven in the bottom position. For detailed information on how to mount the DB14 please contact LINAK A/S.



From the factory the DB14 is delivered with the hollow spindle driven into endposition. Please observe that the solid spindle may roll out during transportation/handling, but must be rolled back to end position before mounting in the profile.



As the desktop amplifies the sound, we advise you to place a vibration/ shock absorbing material between the desktop and the desk frame.

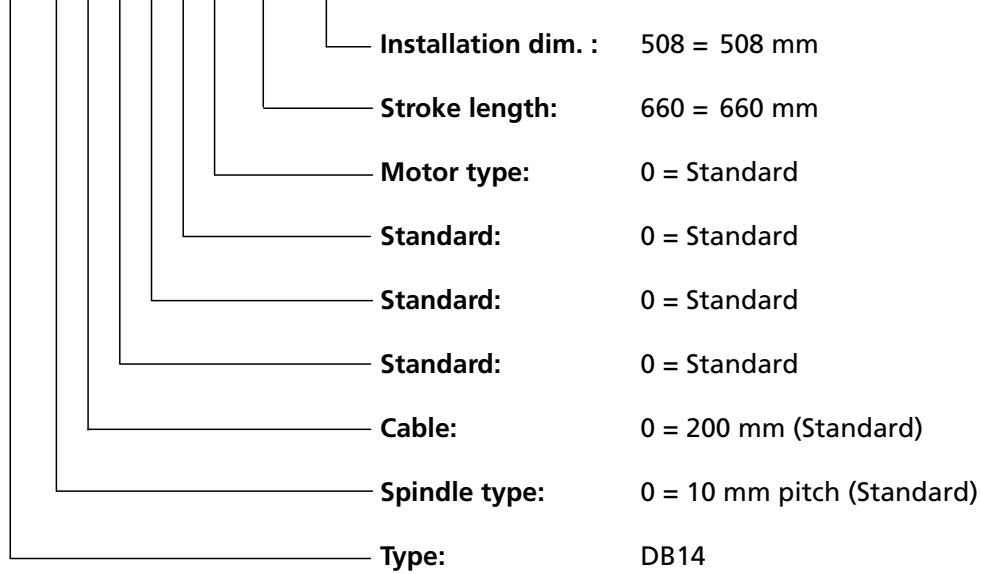


Do not drive the DB14 to the outer end position before mounting. This will result in damaging the DB.

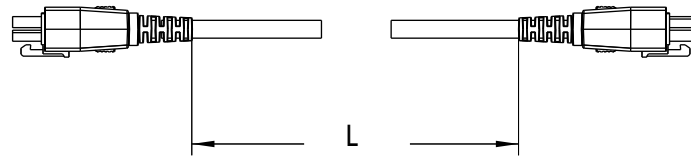
DB14

Ordering example:

DB14 0 0 0 0 0 0 660 508



Motorcable:



Motor cables must be ordered separately.

- Ordering numbers: 0617100 (L = 1000 mm black motor cable)
0617200 (L = 2000 mm black motor cable)
0617250 (L = 2500 mm black motor cable)

Terms of use

The user is responsible for determining the suitability of LINAK products for specific application. LINAK takes great care in providing accurate and up-to-date information on its products. However, due to continuous development in order to improve its products, LINAK products are subject to frequent modifications and changes without prior notice. Therefore, LINAK cannot guarantee the correct and actual status of said information on its products. While LINAK uses its best efforts to fulfil orders, LINAK cannot, for the same reasons as mentioned above, guarantee the availability of any particular product. Therefore, LINAK reserves the right to discontinue the sale of any product displayed on its website or listed in its catalogues or other written material drawn up by LINAK. All sales are subject to the Standard Terms of Sale and Delivery for LINAK. For a copy hereof, please contact LINAK.